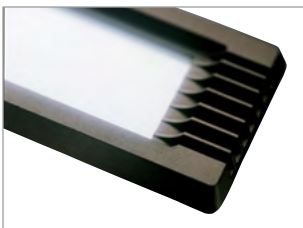




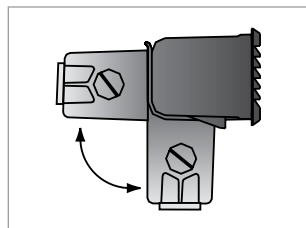
Step into energy savings

Gardco LED step and aisle lights 941L, 942L & 943L set a standard for construction, installation and maintenance. Rugged die-cast aluminum ensures a consistent and lasting fit between the housing, faceplate and junction box assemblies. A textured fade and abrasion resistant TGIC polyester powdercoat finish in a variety of colors provides added corrosion resistance and ensures that the luminaire will remain a lasting contributor to the overall site atmosphere. Aesthetically, the soft corners, concealed mounting hardware and low-glare illumination work to complement the overall design aesthetic.



Benefits

Clean Style and Design: Faceplates display an elegance and style unmatched in step and aisle lights. Three faceplate styles are available, each demonstrating extensive design sensitivity with soft corners, louvers that span the entire length of the faceplate, and horizontal tiers on the open units.



Installation Flexibility: Housings feature a separate, two-position J-box assembly. Because wall thickness is typically the constraining dimension, the junction box is factory-mounted on the bottom of the luminaire. This can be quickly repositioned in the field for back mounting if space is limited below the luminaire.



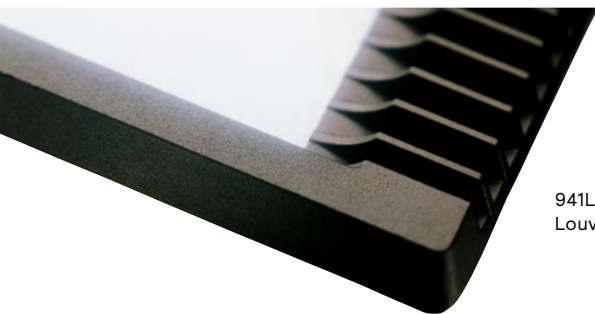
Sealed Against the Elements: Gasketing provides a complete seal at all times by mating precisely with the inside of the back housing. This unique self-compensating seal eliminates gaps which can occur when fasteners are not thoroughly tightened, or when installed in irregular wall surfaces like stucco and brick.

Features

- Three Faceplate Designs: Louver (LV), Diffused Glass (DG) and Ribbed Guard with Diffused Glass (RGD)
- Bollards Expand Mounting: available in 25" and 40" heights, this mounting option provides an elegant way to bring light where it is needed.
- Retrofit Kits: includes internal components outfitted with LED array, an integral driver and a complete new faceplate.

941L/942L/ 943L 94 Line Series

Step and aisle lights



941L with Louver (LV)

Gardco LED step and aisle lights redefined what low-level lighting should be. With streamlined aesthetics and an entirely new level of nighttime illumination, Gardco reinvented and rejuvenated the previously utilitarian world of step and aisle lighting. Now, by integrating state-of-the-art, high performance LEDs, these architecturally styled and intelligently engineered luminaires provide the energy saving advantages required in today's environment.

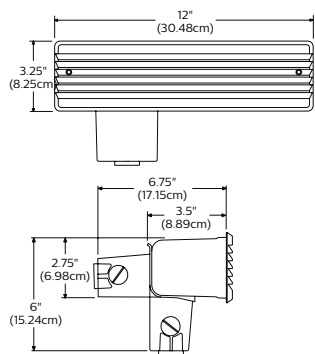
Ordering guide

example: 941L-21L-CW-D-LV-120-F-BZ

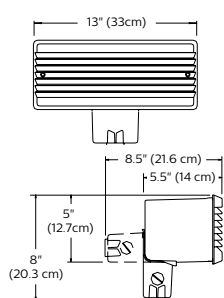
Prefix	Wattage	CCT/Generation	Wall Type	Faceplates	Voltage	Options	Finish
<input type="text"/>	<input type="text"/>	<input type="text"/>	<input type="text"/>	<input type="text"/>	<input type="text"/>	<input type="text"/>	<input type="text"/>
Complete Luminaires	21L 21W, integral lens array (350mA)	CW Cool White 5700K, 70CRI, Gen 2	D Drywall Not suitable for concrete pour applications. Also, if insulating material is present, it must be kept at least 3" away. Type D units are thermally protected. Non-IC luminaire.	LV Louver	120 120V	F Fusing (provide specific input voltage)	BZ Textured bronze
941L Horizontal	31L 31W, integral lens array (530mA)	NW Neutral White 4000K, 70CRI, Gen 2	C Concrete Pour Suitable for concrete pour applications only.	DG1 Diffuse Glass	277 277V	TP Tamper Resistant Screws	WH Textured white
942L Horizontal			Note: wall type does not apply to 943L-B25 and 943L-B40. Omit WALL TYPE for 943L-B25 and 943L-B40.	RGD Ribbed Guard with Diffuse Glass	UNV 120-277V 50hz/60hz		BK Textured black
943L Vertical							DGY Dark grey
943L-B25 943L mounted in 25" bollard							OC Optional color (specify the RAL designation) ex: OC-RAL7024
943L-B40 943L mounted in 40" bollard							SC Special color paint (must supply color chip to specify)
Retrofit Kits¹							
RK-941L Horizontal							
RK-942L Horizontal							
RK-943L Vertical							

The 94 Line LED step and aisle lights utilize an advanced high output LED array system offering a remarkably practical distribution pattern. The LED system provides increased light output and a longer lifespan than standard HID sources while consuming less energy. Consuming as little as 20 watts of power, these step lights use up to 50% less energy than the comparable HID and fluorescent versions and generally lower energy expenses by up to 40% in comparison to most systems being used today, while offering the benefit of a 50,000 hour service life.

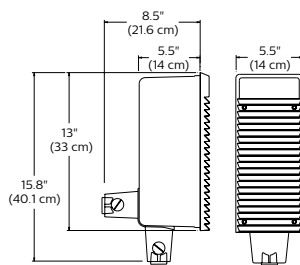
941L Dimensions



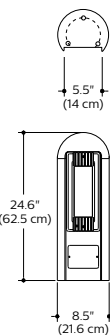
942L Dimensions



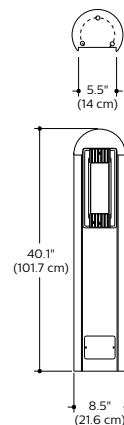
943L Dimensions



943L-B25



943L-B40



Prior to ordering, consult specification sheets on gardcolighting.com for the most current information, notes, and exclusions.

The information presented in this document is not intended as any commercial offer and does not form part of any quotation or contract.



© 2019 Signify Holding. All rights reserved. This document contains information relating to the product portfolio of Signify which information may be subject to change. No representation or warranty as to the accuracy or completeness of the information included herein is given and any liability for any action in reliance thereon is disclaimed. All trademarks are owned by Signify Holding or their respective owners.

Signify North America Corporation
200 Franklin Square Drive,
Somerset, NJ 08873
Telephone 855-486-2216

Signify Canada Ltd.
281 Hillmount Road,
Markham, ON, Canada L6C 2S3
Telephone 800-668-9008