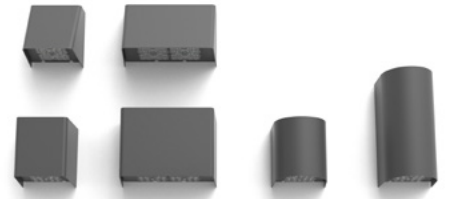




by Signify

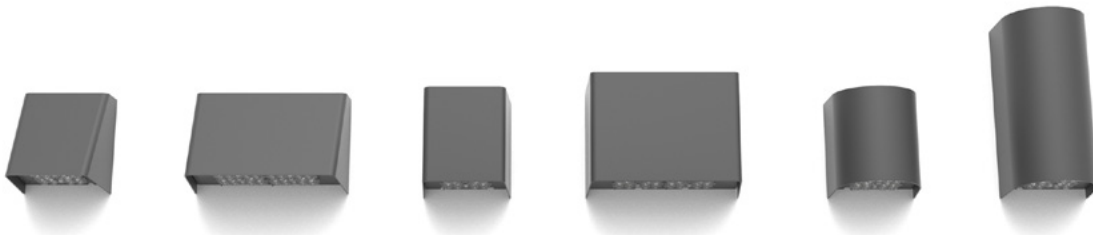
Wall Mount

GeoForm

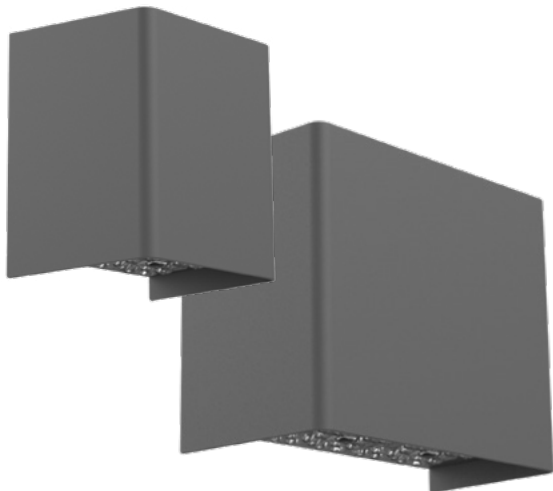


**Boundless possibilities.  
Exceptional results.**

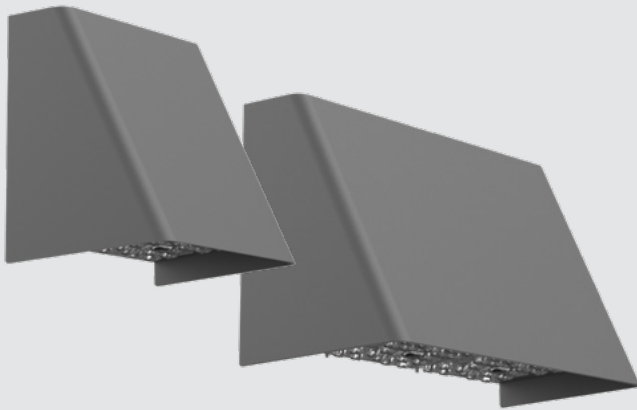
# Introducing Gardco GeoForm wall sconces



**Minimalist design,  
featuring six shapes**



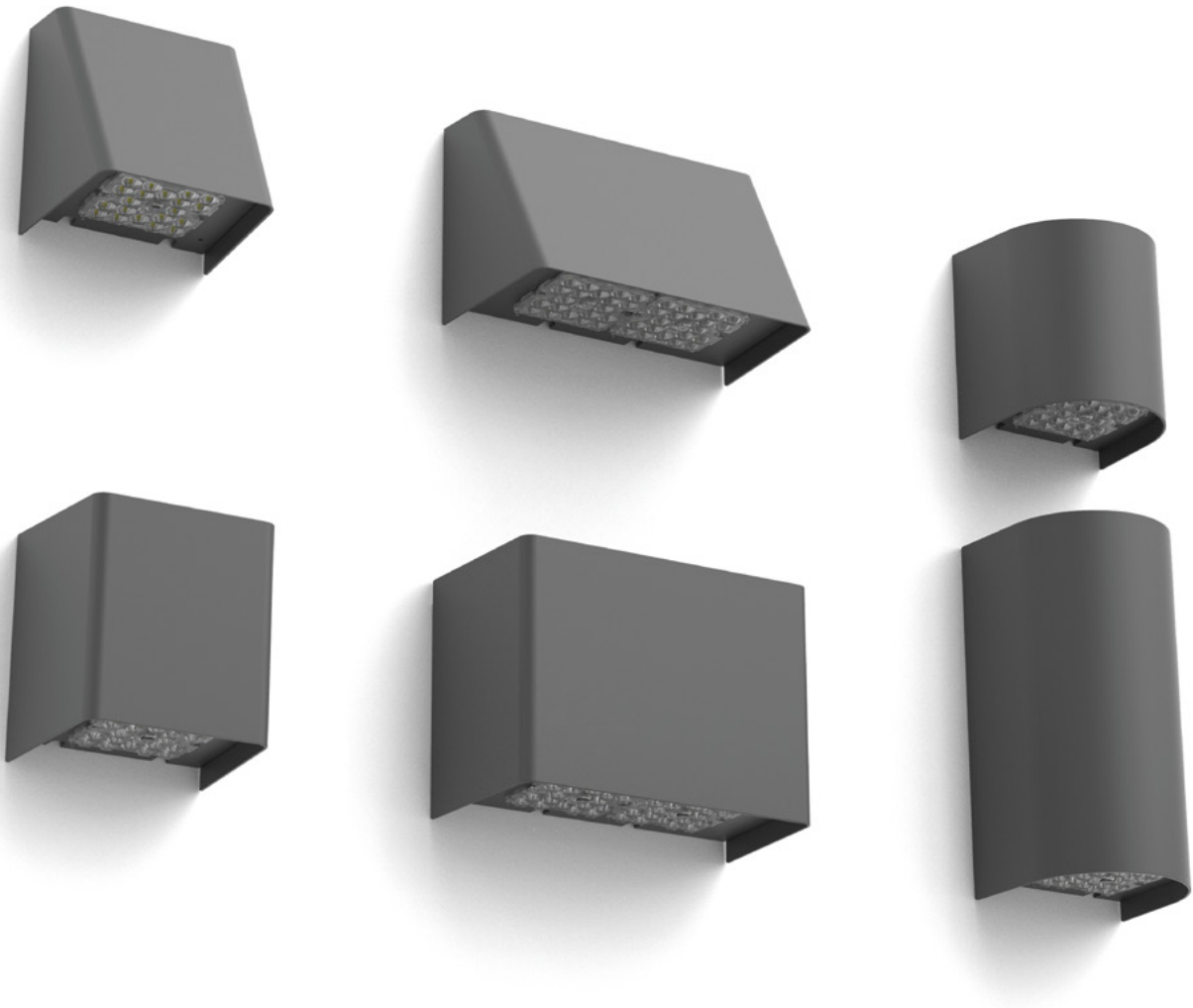




**Groundbreaking  
LED technology**

**Two light  
engines  
to tackle  
any task**





## Wall sconce: transformed

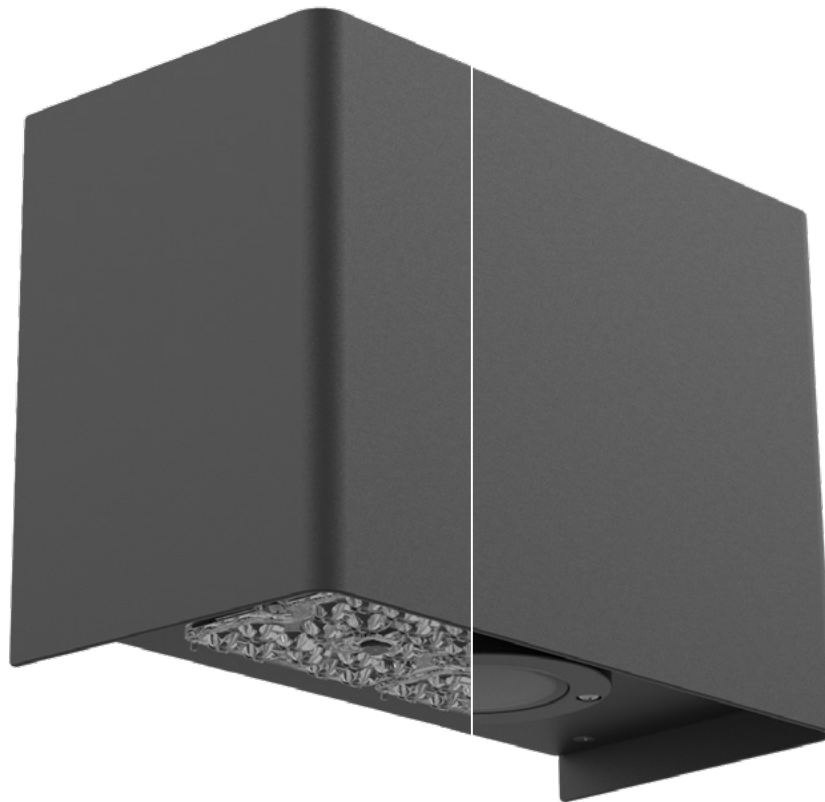
GeoForm offers six distinct luminaire shapes to pair with buildings large and small, modern or traditional. Designed around the latest in LED technology, these sconces are small in scale, featuring a minimalistic daytime aesthetic. At night, GeoForm sconces combine best-in-class pathway lighting with specialized optics to highlight any façade.

### Product highlights

- Wedge, block and cylinder shapes in two sizes for any application
- Two light engines suitable for any task
- Best in class efficacy from 150 to 178 lumens per watt
- Light weight for ease of installation
- Modern geometric designs at a small scale

# Illumination: revolutionized

With two distinct light engines, you can highlight building features, or provide best-in-class pathway illumination. The choice is yours – and you no longer need different luminaires to do it.



## Precision Plus optics

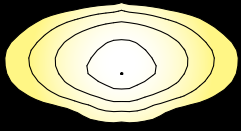
- ① **Superior uniformity**
- ② **Low glare illumination**
- ③ **Lumen output ranging**  
from 1,000 to 12,000
- ④ **Up to 178 lumens per watt**  
best-in-class efficacy

## Light Effects optics

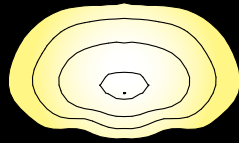
- ① **Three distributions**  
wall wash, spot, pencil beam
- ② **Uplight in wet location**  
available with light effect optics
- ③ **Uplighting or downlighting**  
either or both
- ④ **Lumen output ranging**  
from 700 to 2,400

# Distributions

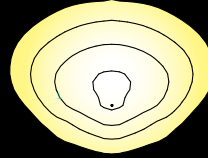
## Precision Plus



Type 2



Type 3



Type 4

## Light Effects

### Light Effects - Down

Pencil

Spot

Wall Wash

### Light Effects - Up

Pencil

Spot

Wall Wash



### Light Effects - Up and down

Wall Wash

Pencil

Spot

Spot



Wall Wash

Spot

# Light engine offering

## Precision Plus



Luminaire	Small Wedge	Small Block	Small Cylinder	Medium Wedge	Medium Block	Medium Cylinder
Precision Plus	✓	✓	✓	✓	✓	✓
Diffuse Lens	✓	✓	-	-	-	-

## Light Effects



Luminaire	Small Wedge	Small Block	Small Cylinder	Medium Wedge	Medium Block	Medium Cylinder
Light Effects	-	✓	✓	-	✓	✓
Uplight - wet location	-	✓	✓	-	✓	✓
Up and downlight	-	-	-	-	✓	✓

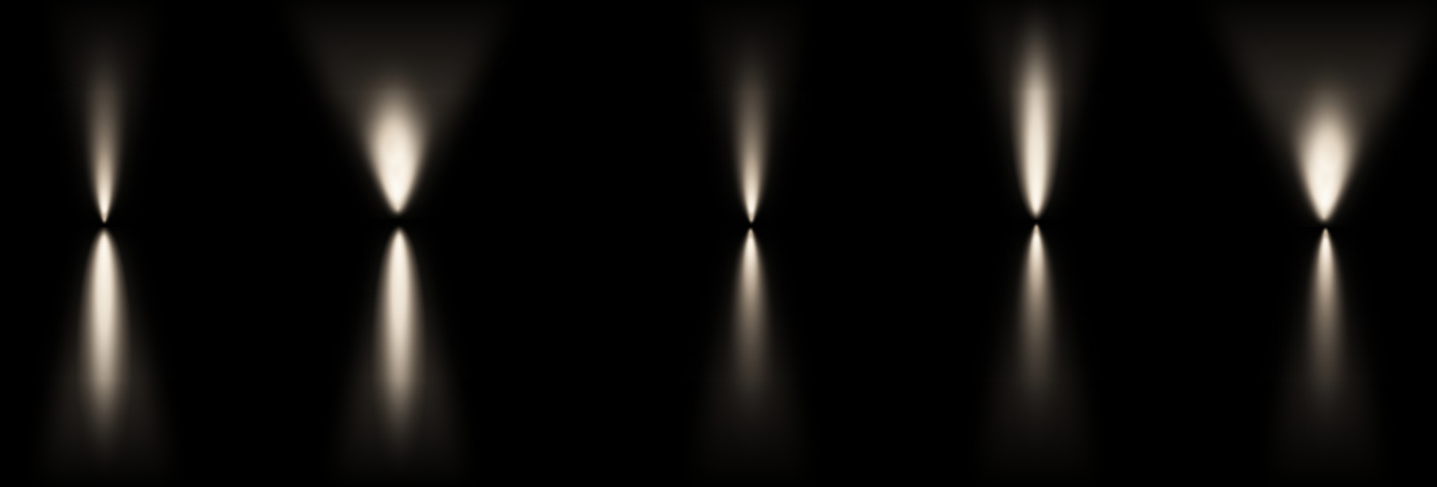
Pencil

Wall Wash

Pencil

Spot

Wall Wash



Spot

Pencil







# Small Wedge

**Lumens**  
1,700-6,500

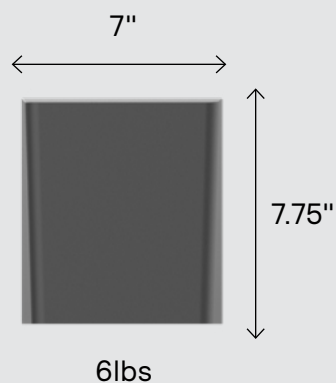
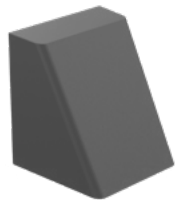
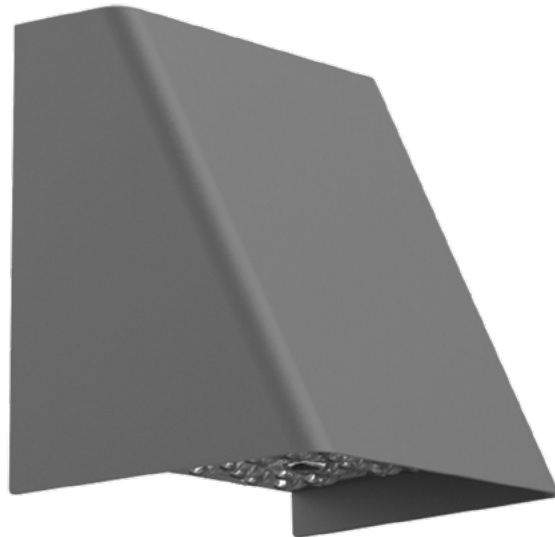
**Efficacy**  
130-175

**Optical Distributions**  
Type 2, 3, 4, diffuse

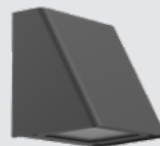
**Emergency**  
Standard (0-40°C)

**Mounting Orientation**  
Down only

**Mounting Height**  
8-12'



## Product highlight



Diffuse lens option  
available for over  
doorway applications







# Medium Wedge

**Lumens**  
1,700-12,000

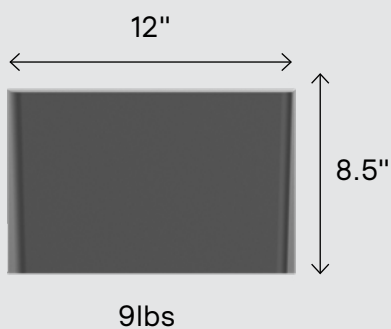
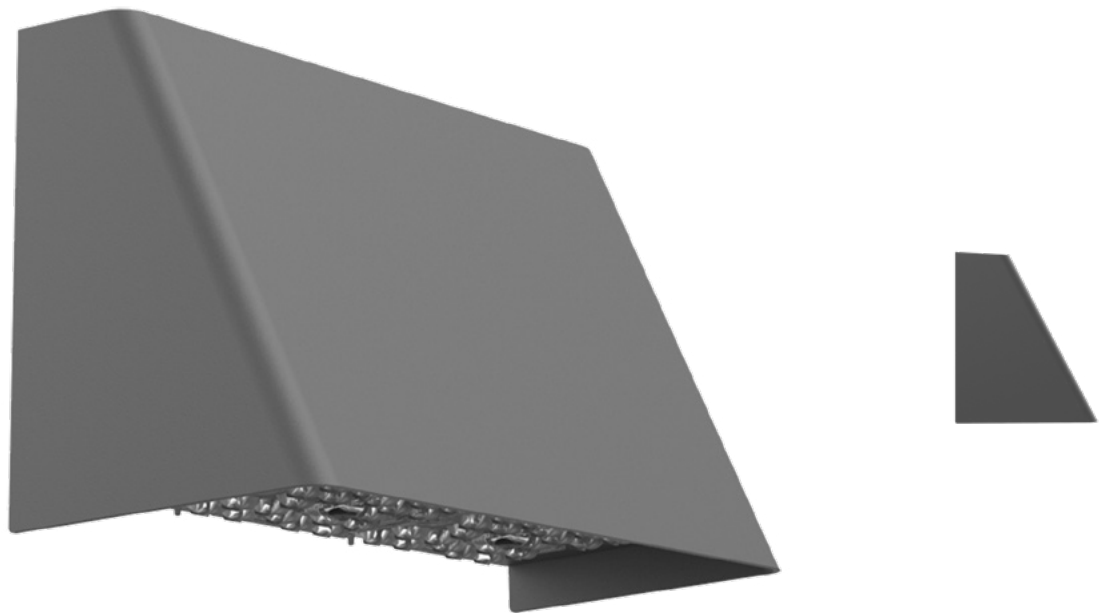
**Efficacy**  
140-180

**Optical Distributions**  
Type 2, 3, 4

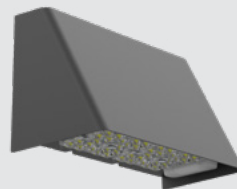
**Emergency**  
Standard (0-40°C)

**Mounting Orientation**  
Down only

**Mounting Height**  
10-24'



## Product highlight



Motion sensor option  
is minimally visible





# Small Block

**Lumens**  
1,700-6,500

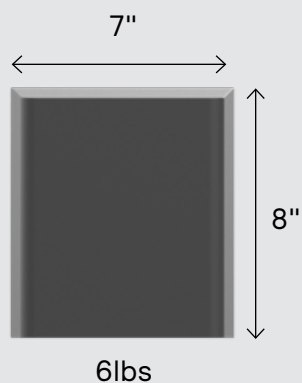
**Efficacy**  
130-175

**Optical Distributions**  
Precision plus: type 2, 3, 4, diffuse  
Light effects: wall wash, spot, pencil

**Emergency**  
Standard (0-40°C)

**Mounting Orientation**  
Down or up

**Mounting Height**  
8-12'



## Product highlights



Light effects  
option available



Option to mount  
down or up



Diffuse lens  
option available







# Medium Block

**Lumens**  
2,900-12,700

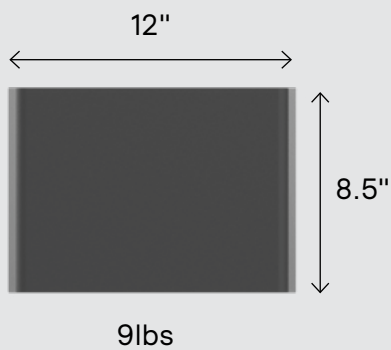
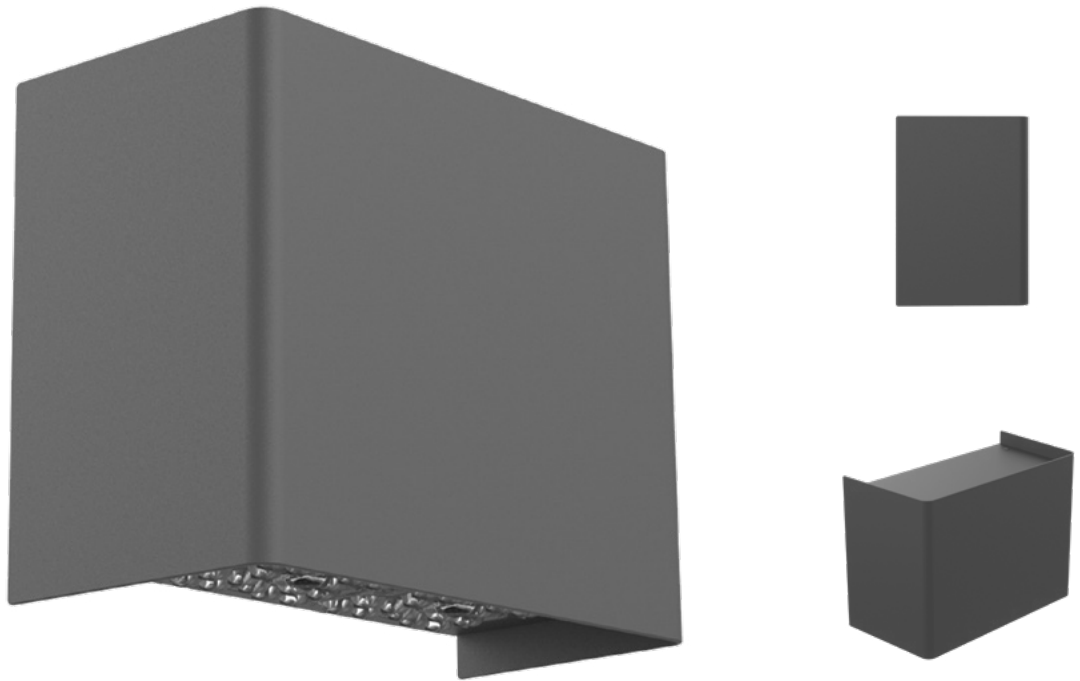
**Efficacy**  
140-180

**Optical Distributions**  
Precision plus: type 2, 3, 4  
Light effects: wall wash, spot, pencil

**Emergency**  
Cold rated (-20-40°C)

**Mounting Orientation**  
Down, up, down and up

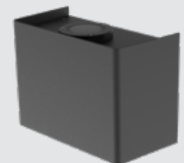
**Mounting Height**  
10-24'



## Product highlights



Light effects  
option available



Option to mount  
down, up, or both





# Small Cylinder

**Lumens**  
1,700-6,500

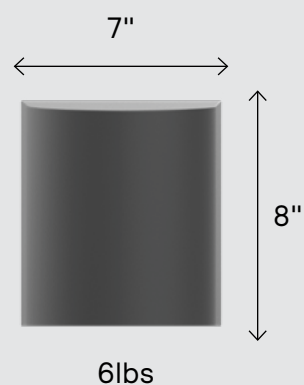
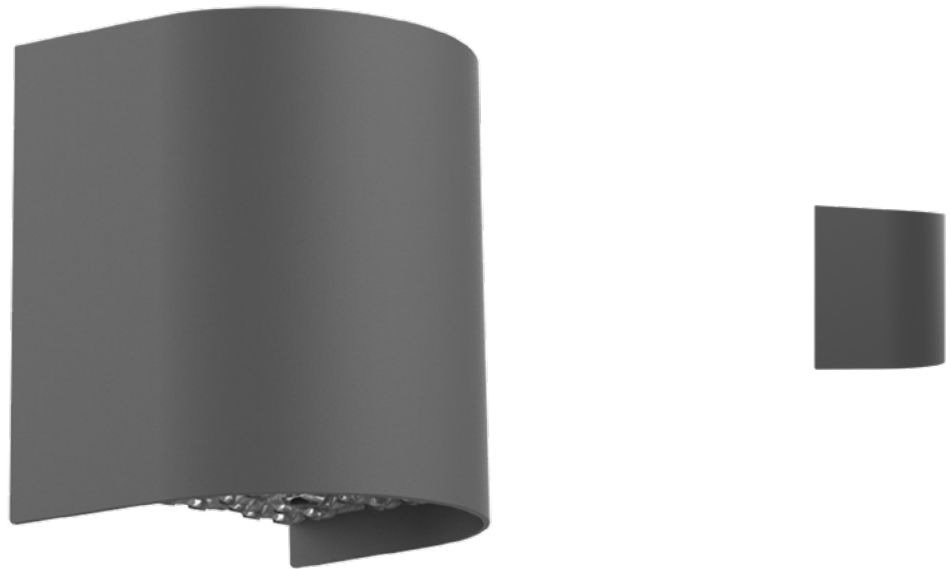
**Efficacy**  
130-175

**Optical Distributions**  
Precision plus: type 2, 3, 4  
Light effects: wall wash, spot, pencil

**Emergency**  
Standard (0-40°C)

**Mounting Orientation**  
Down or up

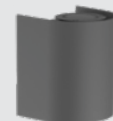
**Mounting Height**  
8-12'



## Product highlight



Light effects  
option available



Option to mount  
down or up



# boutique





# Medium Cylinder

**Lumens**  
2,900-6,500

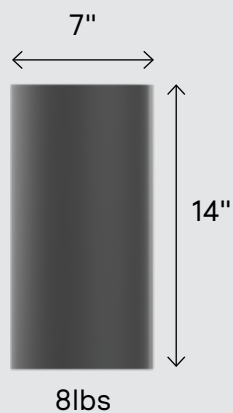
**Efficacy**  
130-175

**Optical Distributions**  
Precision plus: type 2, 3, 4  
Light effects: wall wash, spot, pencil

**Emergency**  
Cold rated (-20-40°C)

**Mounting Orientation**  
Down, up, down and up

**Mounting Height**  
8-12'



## Product highlight



Light effects option available



Option to mount down, up, or both



# Take your GeoForm to the next level

With up to 178 lumens per watt, switching to GeoForm alone will result in significant energy savings. If additional controls are required, GeoForm offers a range of basic to advanced options to meet your needs.

## Basic controls

### 0-10V Dimming

GeoForm luminaires include 0-10V dimming drivers standard. Dimming leads can be accessible for controls by others.

### Photocell

All GeoForm luminaires are available with a button photocell option for basic daylight sensing capability.

### Motion Response

GeoForm wedge and block medium are available with a microwave motion sensor.

### Automatic Profile Dimming with Dynadimmer

Dynadimmer reduces the luminaire's light output according to pre-programmed or customized dimming schedules to reduce light pollution and energy consumption without compromise.

### Emergency

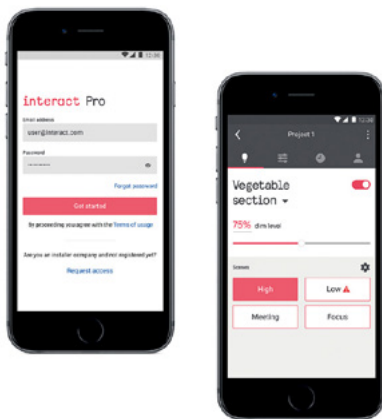
All GeoForm luminaires feature integral emergency battery backup. The medium sizes are available with cold pack. No back box is required.



# It's all about control

## Make the leap from smart lighting to super smart lighting

Connectivity is the future and key to unlocking your smart building potential. Help boost your energy savings, reach your sustainability targets, and enhance occupancy comfort levels immediately. Interact is a connected system with wireless luminaire level controls and integral occupancy & daylight sensing.



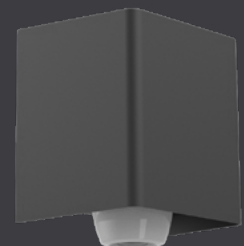
## Start simple and lay the foundation

- Smart lighting with luminaire integrated occupancy and daylight sensor.
- Save up to **80%** on installation and material cost compared with more complex systems.<sup>1</sup>

1. Compared to wired networked lighting control systems.

## Features

- No additional wiring required during installation.
- Motion, daylight sensing and grouping can be done right out of the box.
- A gateway can be added at any time for additional features, such as scheduling and remote management.
- Set up is simple and can be done from your smart phone.
- Interact delivers a consistent experience between indoor and outdoor lighting control.
- Interact is the only system that offers wireless connectivity and control for lamps, luminaires, and retrofit kits.





# Simplify servicing with industry unique Service Tag product support



For further peace of mind, GeoForm sconces are backed by our exclusive Service Tag, which includes quick registration, access to luminaire configurations, and spare parts identification, for assistance throughout the life of the product.



# Streamline your design with Gardco GeoForm

Lighting designers need to fulfill basic functional requirements driven by standards, but also create aesthetically pleasing spaces with light. With Gardco GeoForm, you can capture the best of both worlds by blending performance level capabilities with accent effects to beautifully highlight building materials and surfaces.

For more information, please visit the Gardco GeoForm website at [www.gardco.com/geoform](http://www.gardco.com/geoform)





