



by  Signify

Wall Mount

LED Wall Sconce

121



Designed to make your lighting distinct

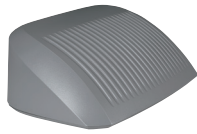
Gardco LED wall sconce 121 offers distinction through its styling, powerful optical design, array of distributions, and impressive selection of control possibilities

Features and benefits

- Multiple lumen packages with output ranging from 2,607 to 10,103 lumens
- Energy saving LEDs provide up to 114 LPW efficacy
- Type 2, 3, and 4 distributions available. Advanced Class 1 LED arrays designed to efficiently direct light into very wide or forward projecting light patterns
- Emergency battery back up available to provide path-of-egress illumination and is integral to the luminaire - no back box required
- Energy saving control options, such as motion response and wireless controls available
- Reliable light engines are IP66 sealed to protect against dust and moisture so that LED life is extended
- Rugged, die-cast aluminum housing for maximum durability
- Embossed fins create a unique aesthetic accent
- Finish available in black, white, bronze, dark gray, or medium gray

121 LED Wall Sconce

Designed to add an element of styling to your application by pairing straight lines with rounded edges, the form of the 121 is timeless, yet contemporary, and will complement a wide assortment of architectural styles and designs, while delivering high light levels and functional distributions.



Ordering guide*

example: 121-32L-700-NW-G4-3-120-BL-IMRI2-BZ

Prefix	Number of LEDs	Color Temperature	LED Color-Generation	Distribution	Emergency	Voltage
121						
121 LED wall sconce	16L 16 LEDs (1 module) 32L 32 LEDs (2 modules)	200 200 mA 400 400 mA 530 530 mA 700 700 mA 1000 1000 mA 1200 1200 mA 530 530 mA 700 700 mA 1000 1000 mA	CW-G4 Cool White 5000K, 70 CRI Generation 4 NW-G4 Neutral White 4000K, 70 CRI Generation 4 WW-G4 Warm White 3000K, 70 CRI Generation 4 WY-G4 Warm Yellow 2700K, 80 CRI Generation 4 BW-G4 Balanced White 3500K 80CRI Generation 4 AM-G4 Direct Amber (590nm) Generation 4	2 Type 2 3 Type 3 4 Type 4	EBPC Emergency Battery Pack Cold Weather Leave blank to omit an emergency option	UNV 120-277V HVU 347-480V 120 120V 208 208V 240 240V 277 277V 347 347V 480 480V

Options				
Dimming controls	Motion sensing lens	Photo sensing	Electrical	Finish
DD 0-10V External dimming (controls by others) ⁴ DCC Dual Circuit Control FAWS Field Adjustable Wattage SW Interface Module for SiteWise LLC Integral wireless module BL Bi-level functionality with motion sensor DynaDimmer: Automatic Profile Dimming CS50 Security 50% Dimming, 7 hours CM50 Median 50% Dimming, 8 hours CE50 Economy 50% Dimming, 9 hours DA50 All Night 50% Dimming CS30 Security 30% Dimming, 7 hours CM30 Median 30% Dimming, 8 hours CE30 Economy 30% Dimming, 9 hours DA30 All Night 30% Dimming	IMRI2 Integral with #2 lens IMRI3 Integral with #3 lens	PCB Photocontrol Button	Fusing F1 Single (120, 277, 347VAC) F2 Double (208, 240, 480VAC) F3 Canadian Double Pull (208, 240, 480VAC) Surge Protection (10kA standard) SP2 Increased 20kA	Textured BK Black WH White BZ Bronze DGY Dark Gray MGY Medium Gray Customer specified RAL Specify optional color or RAL (ex: OC-LGP or OC-RAL7024) CC Custom color (Must supply color chip for required factory quote)

Luminaire Accessories (order separately)*

Mounting Accessories
Wall Mount WS Wall Mounted Box for Surface Conduit

Controls Accessories
Wireless controls remote mount module LLCR2-(F) #2 lens (specify F with finish) LLCR3-(F) #3 lens (specify F with finish) Central Remote Motion Response (used connected to SiteWise main panel) MS2-A-FVR-3 MS2-A-FVR-7

Wireless controls remote controller accessory

Wireless controls system offers a remote radio/sensor module that allows connectivity to Wireless system gateway. Remote module can be mounted to wall or pole with j-box supplied. May be specified by choosing one of two different lenses to accommodate a variety of mounting heights/sensor detection ranges. Must specify option DD on luminaires that are planned to be used with remote mount controllers. See spec sheet for WirelessControls details.

* Prior to ordering, consult specification sheets on gardcolighting.com for the most current information, notes, and exclusions.

The information presented in this document is not intended as any commercial offer and does not form part of any quotation or contract.

