

DESCRIPTION

The 11" round LED provides exceptional aesthetics with impressive strength and is available in 10, 15, 20, or 25 watt lumen packages. Polycarbonate lens, clear or opal, combined with four face plates provides a choice of different styles. Also, choose a photo control or motion sensor for control. Choose an emergency battery pack to provide egress illumination.

Catalog #	Type
Project	Date
Comments	
Prepared by	

SPECIFICATION FEATURES

Housing

Shallow casting is die-cast aluminum. Backplate constructed of 16 gauge aluminum.

Face Plate Finish

Injection-molded polycarbonate color is matte black standard, matte white painted, or bronze painted. Border paint option is a premium baked-on finish. For custom colors, provide manufacturer paint number, RAL number or color chip.

Shallow Casting Finish

Polyester powder-coat paint applied in a five-stage process, 2.0 mil thickness, and baked on at 400° F. Finish is TGIC, textured, thermoset, polyester powder-coat.

Mounting

Surface, ceiling or wall. Interior or exterior.

Gasket

Die-cut closed-cell silicone gasket seals lens to casting. Gasket is secured with adhesive, and locked in place to the back casting. When the casting is not required, the gasket is mechanically attached to the back plate. One gasket seals the fixture.

Lens

One-piece, injection-molded opal or clear polycarbonate, 0.125" thick. Attached with 4 recessed T20 stainless-steel TORX®-head fasteners.

Lens Lifetime Warranty.

Decorative Faces

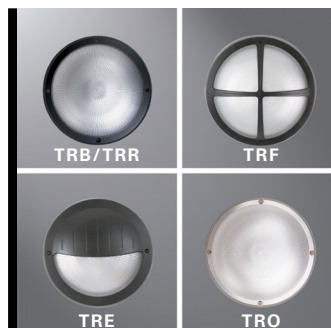
High-impact, injection molded, 0.125" minimum thickness, polycarbonate overlay attached to lens with two recessed T20 stainless steel TORX®-head fasteners. Eyelid offers optimal lamp shielding. Open face is lens for continuous radial light pattern. Border face utilizes the standard open lens with paint on the border, eliminating backlit halo effect.

Electrical

LED driver is mounted to the backpan for optimal thermal management. High efficiency LED mounted to circuit board. 70% lumen maintenance at 50,000 hours when operated in an environment as noted on the Maximum Ambient Operating/Option Matrix on the following page.

Labels

UL/cUL listed for wet locations, ceiling or wall mount. IP65 rated. Available to mount on combustible or non-combustible surfaces. Options to meet Buy American Act requirements.



TR 11 LED

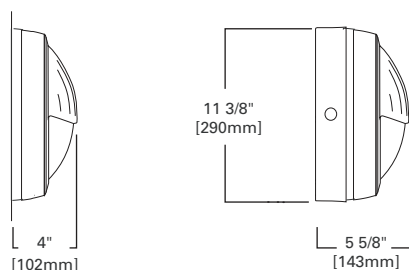
LD4 LED

11" Round
10/15/20/25 Watt
High Abuse
Polycarbonate
Lens Lifetime Warranty

CEILING/WALL
INTERIOR/EXTERIOR



MOUNTING



FLAT

SHALLOW CASTING (CSTG)

Delivered Lumens (5000K)						
Wattage		TRO11	TRB11	TRR11	TRF11	TRE11
10	Clear	1175	950	825	775	650
	Opal	825	600	600	525	450
15	Clear	1725	1325	1500	1200	930
	Opal	1200	825	850	760	600
20	Clear	2200	1800	1950	1500	1175
	Opal	1500	1100	1150	1000	725
25	Clear	2630	2190	2333	1831	1410
	Opal	1695	1400	1485	1155	890
		Open	Border	Ring	Four Quadrant	Eyelid

Delivered Lumens in table above are estimated values only. Refer to LM-79 data files for exact delivered lumen, input wattage and distribution.

RATINGS

UL/CUL listed for wet locations
IP65

ORDERING INFORMATION

SAMPLE NUMBER: TRF11-LD4-15W-40-OPL-BZ-UNV-EDC1-EL5W/CSTG

Domestic Preferences ¹⁰ [Blank]=Standard BAA=Buy American Act	T Product T=Terrapin LED	R Shape R=Round	11 Size 11=11"	LD4 LD4=LED 4.0	Wattage ² 10W=10 Watt 15W=15 Watt 20W=20 Watt 25W=25 Watt	Color Temp 30=3000K 35=3500K 40=4000K 50=5000K	Lens OPL=Opal CL=Clear	Color ^{1, 6} BK=Black WH=White BZ=Bronze	Voltage UNV=Universal Voltage 120V=120 Volt 277V=277 Volt	Driver ED=Electronic Driver	C1 =Single Circuit, Low Voltage Leads not connected D1 =Single Circuit, Low Voltage Dimming Leads connected to driver and presented at supply	Options ² F1 =Fuse(specify voltage) ² CSTG =Shallow Casting - ^{3,4} Same as SCB11, but ships with fixture PB120V/CSTG =Photocell, 120V, ^{2,3,9} (Shallow Casting Necessary) PB277V/CSTG =Photocell, 277V, ^{2,3,9} (Shallow Casting Necessary) OS =Occupancy Sensor, Internal (behind lens), FM105 ^{2, 8} EL5W/CSTG =Emergency Battery Pack, 5W (Shallow Casting Necessary), 20, 25 watt ^{2, 3, 7} limited to max. 25°C ambient environment
---	--	-------------------------------------	------------------------------------	----------------------------------	---	---	-------------------------------------	---	---	---------------------------------------	--	---

Notes:

- Custom colors available. Furnish RAL # or paint manufacturer/model #.
- See Maximum Ambient Operating/Option Matrix below for option capability and wattage/ambient restrictions.
- When CSTG, PB120/CSTG, PB277/CSTG, EL5W/CSTG is specified, a color must be specified.
- CSTG has (4) threadless hubs suitable for 1/2" conduit (plugged).
- Color must be specified.
- Open lens/style does not require a color to be specified, unless used with a shallow casting (CSTG, PB120/CSTG, PB277/CSTG, EL5W/CSTG).
- Not available 25W.
- OS only functional with 120 or 277 input voltage.
- PB120V/CSTG requires 120V to be specified as fixture voltage, and PB277V/CSTG requires 277V to be specified as fixture voltage.
- Only product configurations with this designated prefix are built to be compliant with the Buy American Act of 1933 (BAA). Please refer to [DOMESTIC PREFERENCES](#) website for more information. Components shipped separately may be separately analyzed under domestic preference requirements.
- Accessories sold separately will be separately analyzed under domestic preference requirements. Consult factory for further information.

Accessories¹¹
(order separately)
VRSD=T20 Center-pin
tamper-proof
TORX®-head screwdriver

Maximum Ambient Operating/Option Matrix

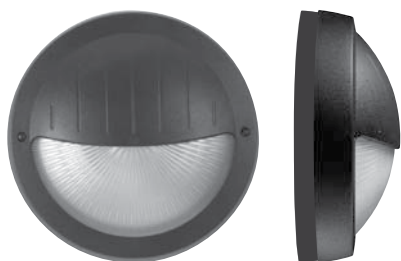
	10W				15W				20W				25W			
	Flat Mount		Shallow Cast		Flat Mount		Shallow Cast		Flat Mount		Shallow Cast		Flat Mount		Shallow Cast	
	Ceiling	Wall	Ceiling	Wall	Ceiling	Wall	Ceiling	Wall	Ceiling	Wall	Ceiling	Wall	Ceiling	Wall	Ceiling	Wall
No options	45C	45C	45C	45C	40C	40C	40C	40C	40C	40C	40C	40C	40C	40C	40C	40C
Fuse	45C	45C	45C	45C	40C	40C	40C	40C	40C	40C	40C	40C	40C	40C	40C	40C
Photocell	n/a	n/a	40C	40C	n/a	n/a	40C	40C	n/a	n/a	30C	30C	n/a	n/a	25C	25C
Occ Sensor	40C	40C	35C	35C	35C	35C	35C	35C	25C	25C	25C	25C	n/a	n/a	n/a	n/a
Fuse & Photocell	n/a	n/a	40C	40C	n/a	n/a	40C	40C	n/a	n/a	30C	30C	n/a	n/a	25C	25C
Fuse & Occ Sensor	40C	40C	35C	35C	35C	35C	35C	35C	25C	25C	25C	25C	n/a	n/a	n/a	n/a
EM	n/a	n/a	35C	35C	n/a	n/a	35C	35C	n/a	n/a	25C	25C	n/a	n/a	n/a	n/a
EM & Fuse	n/a	n/a	35C	35C	n/a	n/a	35C	35C	n/a	n/a	25C	25C	n/a	n/a	n/a	n/a
EM & Fuse & Photocell	n/a	n/a	35C	35C	n/a	n/a	35C	35C	n/a	n/a	25C	25C	n/a	n/a	n/a	n/a
EM & Fuse & Occ Sensor	n/a	n/a	35C	35C	n/a	n/a	35C	35C	n/a	n/a	25C	25C	n/a	n/a	n/a	n/a
EM & Photocell	n/a	n/a	35C	35C	n/a	n/a	35C	35C	n/a	n/a	25C	25C	n/a	n/a	n/a	n/a
EM & Occ Sensor	n/a	n/a	35C	35C	n/a	n/a	35C	35C	n/a	n/a	25C	25C	n/a	n/a	n/a	n/a

Lens Lifetime Warranty

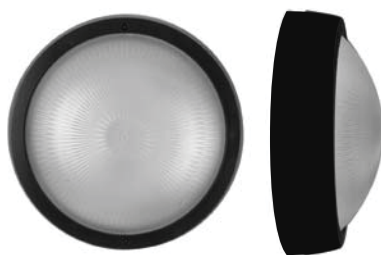
Fail-Safe will repair or provide a replacement lens for any TR11 lens found to be inoperative due to physical abuse for the duration of the installation under normal conditions.

** To make a claim, contact your Cooper Lighting Agent to arrange an RMA (Return Material Authorization) for the claimed product. Upon receipt and verification of the defect, Cooper Lighting will return to you a repaired or, at Cooper Lighting's sole option, replacement fixture.

DESIGN GALLERY

**Eyelid**

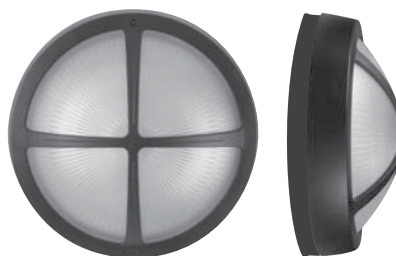
Polycarbonate eyelid/cover attached to lens with tamper resistant screws

**Border (Painted Border)**

Side and edge of lens painted, no front cover

**Ring**

Polycarbonate ring attached to lens with tamper resistant screws

**Four Quadrant**

Polycarbonate cover attached to lens with tamper resistant screws

**Open**

Unpainted lens only. No polycarbonate front cover