

Project		Catalog #		Type	
Prepared by		Notes		Date	



Fail-Safe

MPR3 | LD4 LED

Medical Recessed Patient Room Ambient, Exam, Reading LED 2' x 4'

Typical Applications

Healthcare • Patient Rooms • Exam Rooms • Recovery Areas

Interactive Menu

- Order Information [page 2](#)
- Product Specifications [page 2](#)
- Product Warranty

Product Certification



Product Feature



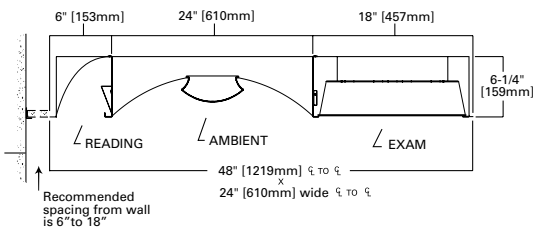
damp location

Top Product Features

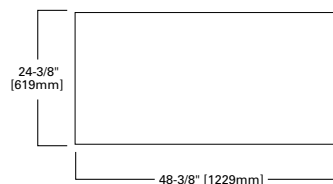
- 3 functions in one fixture to minimize obstructions
- Exam, ambient and reading functions
- Parabolic exam shielding for glare control
- Pattern 12 acrylic lens stand for exam function
- Opal overlay on exam compartment
- Options to meet Buy American and other domestic preference requirements

Dimensional and Mounting Details

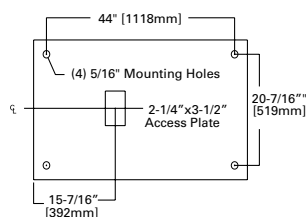
3 COMPARTMENT DIMENSIONS



CEILING CUT-OUT DIMENSIONS (USING DFCL24W-U)



3 COMPARTMENT MOUNTING



Nominal Input Watts

	LO	LO	HI
Ambient (1 module)	13w/1200 lumens	19w/1800 lumens	24w/2200 lumens
Ambient (2 module)	26w/2375 lumens	36w/3550 lumens	48w/4000 lumens
Exam	52w/3900 lumens	76w/5700 lumens	96w/7200 lumens
Reading	13w/910 lumens	19w/1330 lumens	24w/1680 lumens

Nominal input watts approximated, taking into account driver efficiency, LED wattage, other variables.

Order Information

SAMPLE ORDER NUMBER: **MPR3-G-LD4-UNV-2STD/HI/LO-35-EDC-FA-OPL-LVCP**
MPR3 (3 Function - Ambient/Exam/Reading)

Domestic Preferences	Product Family	Ceiling Type	LED	Voltage	# of LEDS (Ambient)	Ambient Light Level	Exam Light Level	Reading Light Level
Domestic Preferences ⁽⁸⁾	Product Family	Ceiling Type	LED	Voltage	# of LEDS (Ambient)	Ambient Light Level	Exam Light Level	Reading Light Level
[Blank]=Standard BAA=Buy American Act TAA=Trade Agreements Act	MPR3=3 Compartment Ambient, Exam Reading	G=Grid ⁽¹⁾	LD4=LED Linear Module	UNV=120V- 277V	1=1 LED Module in Cross- Section 2=2 LED Modules in Cross- Section	STD=Standard LO=Low HI=High	STD=Standard LO=Low HI=High	STD=Standard LO=Low HI=High
Notes (8) Only product configurations with these designated prefixes are built to be compliant with the Buy American Act of 1933 (BAA) or Trade Agreements Act of 1979 (TAA), respectively. Please refer to DOMESTIC PREFERENCES website for more information. Components shipped separately may be separately analyzed under domestic preference requirements.		Notes (1) For flange applications, order the accessory DFCL24W-U on a separate line item. Compatible with 15/16" NEMA G grid ceiling system.						

Color Temperature	Driver Type	Ambient Shielding	Exam Shielding	Options	Accessories
Color Temperature	Driver Type	Ambient Shielding	Exam Shielding	Options	Accessories ⁽⁹⁾
30=3000K 35=3500K 40=4000K 50=5000K	EDC3=Electronic Driver, Non-Dimming, 3 Circuits ⁽⁷⁾ EDD3=Electronic Driver, 0-10V Dimming 10%, 3 Circuits ⁽⁷⁾ ED1D3=Electronic Driver, 0-10V Dimming 1%, 3 Circuits ⁽⁷⁾	FA=Frosted Acrylic, Linear Ribbed	[Blank]=Pattern 20 Acrylic, 0.140" thick A12125=Pattern 12 Acrylic, 0.125" thick OPL=White Smooth Opal lens, 0.125" thick	AM=Antimicrobial Paint LVCP=Low Voltage Relay ^{(2), (3)} GLR=Fuse/Holder LLNL=Linear LED Night Light, 11" Length, 600 lumens ⁽⁵⁾ LLNLA=Linear LED Night Light, 11" Length, Amber EL7W=7W Emergency Battery Pack EL10W=10W Emergency Battery Pack ⁽⁶⁾ EL14W=14W Emergency Battery Pack	DFCL-2448W-U=Drywall Framing Kit, Cleanroom, White, 2' x 4', Gasketing included. Ceiling cutout 24.25" x 48.25" For antimicrobial DFCL, replace "W" with "AMW".
	Notes (7) EDC3, purple and gray low voltage dimming leads not connected. EDD3, purple and gray leads connected to driver, and presented at power supply entry.			Notes (2) Must specify voltage. (3) Normally open, mounting contact switch. Contact activation provides illumination seen across Ambient only-on, Reading only-on, Ambient and Reading-on, Ambient and Reading-off. To control only reading, specify LVCP/READ. To control only ambient, specify LVCP/AMB. Consult technical support for additional choices. (5) LLNL and/or LLNLA uses 11" LED module (LD4), with separate driver. LLNL or LLNLA are in the exam compartment. (6) EL10W illuminates two 22" LED Modules in the exam compartment. Available with LO or STD exam light level.	Notes (9) Accessories sold separately will be separately analyzed under domestic preference requirements. Consult factory for further information.

Product Specifications

Application

- Designed for use in healthcare facilities where exam and ambient illumination is required:
 - Patient Rooms
 - Exam Rooms
 - Recovery Areas

Housing and Reflector

- Durable aluminum construction; 0.047" thickness
- High gloss, electrostatically applied, White powder coat finish
- Average minimum reflectance 92%
- Matte White powder coat finish on the ambient reflectors
- Optional Matte White antimicrobial finish

Lens

- Exam:
 - Pattern 20 acrylic lens, 0.140" thickness
 - Optional Pattern 12 acrylic lens; 0.140" thickness
 - Optional white sooth Opal overly lens option; 0.125" thickness
- Ambient:
 - Linear ribbed, frosted acrylic center lens
- Reading:
 - Semi-specular aluminum reflector

LEDs

- Available in 3000K, 3500K, 4000K and 5000K; 80 CRI minimum
- Choice of Standard, Low or High illumination levels for exam, ambient and reading compartments
- 1 LED linear module in reading compartment at head of bed for patient use
- 2 LED linear modules for soft illumination in ambient compartment via perforated wings while shielding direct source for glare-free illumination
- 4 LED linear modules in exam compartment for focused high intensity illumination
- Projected life is 50,000 hours at 70% lumen maintenance

Electrical

- Electronic driver 120-277V, dimming driver standard
- 0-10V dimming down to 1% or 10%
- Non-dimming available

Compliances

- cULus listed for damp locations

Warranty

- Five year limited warranty on LEDs and Electrical, consult website for details. www.cooperlighting.com/legal

