

Project		Catalog #		Type	
Prepared by		Notes		Date	



## Fail-Safe FVS4, FVS4W LD4 LED

4" Wide, 2', 3', 4', 8' Lengths  
Polycarbonate Lens  
Vandal Resistant - Ceiling/Wall

### Typical Applications:

Vandal Resistant • Schools • Dormitories • Hallways • Locker Rooms • Shower Facilities • Stairwells • Restrooms • Storage Facilities

### Product Certification



### Product features



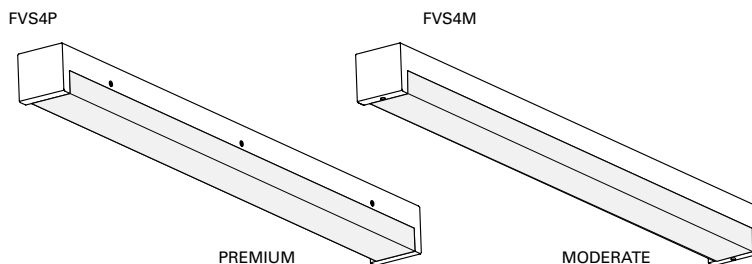
### Interactive Menu

- Order Information [page 2](#)
- Product Specifications [page 2](#)
- Product Warranty

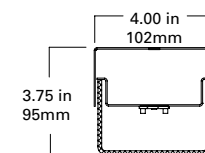
### Top Product Features

- Cold rolled steel, painted or brushed stainless steel housing
- Opal clear polycarbonate lens, lifetime warranty
- 4" nominal width, 3.75" depth
- 2', 3', 4', and 8' lengths
- Continuous row utilizing end Kos
- 16 ga. steel housing (FVSP) for durability. 18 ga. steel FVSM std.
- Internal occupancy sensor available
- Damp location standard, wet location under covered ceiling available
- Matte white paint standard, gloss white & anti-microbial available
- Options to meet Buy American Act requirements

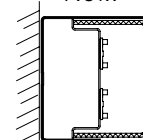
### Dimensional and Mounting Details



CEILING or WALL MOUNT  
FVS4



WALL MOUNT  
FVS4W



FVS4P	
Length	# Screws each side
2'	2
3'	2
4'	3
8'	5

Housing	FVS4P	FVS4M
	16GA Steel	18GA Steel
Listing	UL Damp, Wet Optional	UL Listed Damp Location
Construction	Screws along fixture edge	Set Screws on Endcaps

additional product diagrams

## Order Information

SAMPLE NUMBER: **FVS4WM-8-LD4-2STD-35-UNV-OPL-EDC1-EL7W**  
**FVS4P-4-LD4-2STD-30-120-P187-EDC1-OS1-WL**

Domestic Preferences	Product Family		Length	LED	No. of LEDs	Illumination Level	Color Temperature	Voltage	Lens	Driver	Options
<b>[Blank]</b> =Standard <b>BAA</b> =Buy American Act	<b>FVS4</b> =High Abuse 4" Wide Surface Luminaire <b>FVS4W</b> =High Abuse 4" Wide Surface Wall Mount Luminaire	<b>M</b> =Moderate <b>P</b> =Premium	<b>2</b> =2' length (4), (6) <b>3</b> =3' length <b>4</b> =4' length <b>8</b> =8' length	<b>LD4</b> =Linear LED, Version 4	<b>1</b> =1 row LED module in X-section <b>2</b> =2 rows LED module in X-section (1), (4)	<b>LO</b> =Low <b>STD</b> =Standard <b>HI</b> =High	<b>30</b> =3000K <b>35</b> =3500K <b>40</b> =4000K <b>50</b> =5000K	<b>120</b> =120 Volt <b>277</b> =277 Volt <b>UNV</b> =120-277 Volt	<b>P125</b> =.125" Clear polycarbonate prismatic lens <b>P187</b> =.187" Clear polycarbonate prismatic lens <b>OPL</b> =.125" Polycarbonate smooth opal lens	<b>EDC1</b> =Electronic driver, Non-Dimming, 1 circuit <b>EDC2</b> =Electronic driver, Non-Dimming, 2 circuits <b>EDD1</b> =Electronic driver, Dimming 10%, 1 circuit <b>EDD2</b> =Electronic driver, Dimming 10%, 2 circuits <b>ED1D1</b> =Electronic driver, Dimming 1%, 1 circuit <b>ED1D2</b> =Electronic driver, Dimming 1%, 2 circuits	<b>EL7W</b> =7 watt EM Pack (1), (2) <b>EL14W</b> =14 watt EM Pack (1), (2) <b>SHP</b> =Stainless steel, painted housing <b>SHB</b> =Stainless steel, brushed housing <b>OS1</b> =Internal Occupancy Sensor (behind lens), connected to one LED module. Specify 120 or 277 voltage. (5), (6) <b>OS2</b> =Internal Occupancy Sensor (behind lens), connected to two LED modules. Specify 120 or 277 voltage. (5), (6) <b>WL</b> =Wet location, listed under covered ceiling (FVS4P only, not available on FVS4WP). (3)
<b>Notes</b> (7) Only product configurations with this designated prefix are built to be compliant with the Buy American Act of 1933 (BAA). Please refer to <a href="#">DOMESTIC PREFERENCES</a> website for more information. Components shipped separately may be separately analyzed under domestic preference requirements.			<b>Notes</b> (4) 2HI with 2 circuits not available in 2ft length. (6) 2' length fixture with 2 circuits and OS1 or OS2 is not available.		<b>Notes</b> (1) Up to 1HI only with Emergency Battery Pack. 1LO, 1STD, 1HI available with EL7W and EL14W. 2 LED cross-section not available. (4) 2HI with 2 circuits not available in 2ft length.						<b>Notes</b> (1) Up to 1HI only with Emergency Battery Pack. 1LO, 1STD, 1HI available with EL7W and EL14W. 2 LED cross-section not available. (2) EL7W not available in 2ft length. EL14W not available in 2ft or 3ft length. (3) FVS4P only, not available on FVS4WP. (5) OS1 and OS2 require 120 or 277 to be specified in the ordering logic. (6) 2' length fixture with 2 circuits and OS1 or OS2 is not available

## Product Specifications

### Fasteners

- Captive, stainless steel tamperproof, T20 TORX ®-head screws prevent unauthorized access.

### Housing

- Die-formed 16 ga. Steel (FVS4P), 18 ga. Steel (FVS4M) with welded and ground ends. Stainless steel housing available.

### Finish

- Matte white electrostatically applied, white powder coat finish.
- Gloss white and anti-microbial white painted finish available.

### Gasket

- Concealed, polyurethane end gaskets inhibit the entrance of environmental contaminants.

### Lens

- Nominal 0.125", UV stabilized, clear Pattern 12, impact-resistant, prismatic polycarbonate refractor for high efficiency, low surface brightness and maximum strength. Opal smooth available. .187" thick clear Pattern 12 prismatic polycarbonate available.
- Lifetime Lens Warranty.

### LEDs

- Available with 3000K, 3500K, 4000K, 5000K with minimum of 80CRI.
- Projected life is 50,000 hours at 70% lumen maintenance.

### Lens Retention

- The FVS4P double wall lens channel captivates lens to prevent unauthorized fixture penetration. Screws along each side to ensure maximum lens captivation. FVS4M incorporates (2) tamper resistant screws, one on each endcap.

### Transformer/Driver

- Electronic driver 120V-277V, 0-10V, dimming standard.

### Compliance

- UL listed for damp location. Wet location listed under covered ceiling optional. (FVS4P only).

### Warranty

- 5 Year warranty on LED's and electrical. Lifetime warranty if fixture found to be inoperative due to physical abuse for duration of the installation.

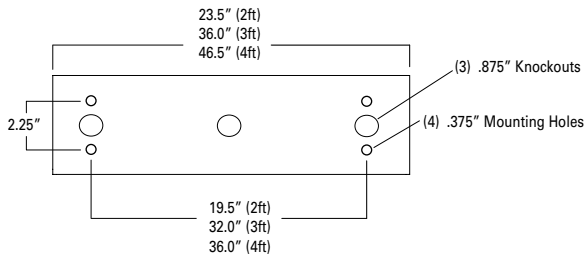
## Nominal Input Watts

 [View IES files](#)

LENGTH	# Modules in Cross-Section	Illumination Level	Nominal Input Watts	Color Temp	LENS P125 Nominal Delivered Lumens	LENS P187 Nominal Delivered Lumens	LENS OPL Nominal Delivered Lumens
2'	1	LO	12.3	30	1266	1230	849
				35	1290	1254	865
				40	1316	1279	882
				50	1434	1394	961
	1	STD	16.9	30	1723	1675	1155
				35	1756	1707	1177
3'	1	HI	22.2	40	2209	2147	1481
				50	2408	2340	1614
	2	LO	24.1	30	2614	2540	1648
				35	2664	2588	1679
	2	STD	33.9	40	2717	2640	1713
				50	2962	2878	1867
2	HI	44.8	30	3475	3376	2190	
			35	3541	3440	2232	
4'	1	LO	21.3	40	3612	3509	2277
				50	3937	3825	2482
				30	4266	4145	2689
				35	4347	4223	2740
	1	STD	28.5	40	4434	4308	2795
				50	4833	4696	3047
3'	1	LO	21.3	30	2384	2254	1545
				35	2429	2296	1574
	1	STD	28.5	40	2478	2343	1606
				50	2701	2553	1751
	1	HI	36.3	30	3067	2899	1988
				35	3125	2954	2025
1	LO	56.8	40	3188	3014	2066	
			50	3475	3285	2252	
2	STD	64.0	30	3699	3497	2397	
			35	3770	3564	2442	
4'	2	LO	56.8	40	3845	3635	2492
				50	4191	3962	2716
	2	STD	64.0	30	5909	5575	3567
				35	6022	5682	3635
	2	HI	71.7	40	6142	5795	3708
				50	6695	6317	4042
2	LO	57.4	30	6545	6175	3951	
			35	6671	6294	4027	
4'	2	STD	67.5	40	6804	6420	4107
				50	7416	6997	4477
	2	HI	89.3	30	7136	6733	4308
				35	7273	6862	4390
	2	LO	23.6	40	7418	6999	4478
				50	8086	7629	4881
2	STD	33.6	30	2594	2515	1707	
			35	2643	2563	1739	
2	HI	44.5	40	2696	2614	1774	
			50	2939	2850	1934	
2	LO	57.4	30	3476	3370	2287	
			35	3542	3434	2330	
4'	2	STD	67.5	40	3613	3503	2377
				50	3938	3818	2591
	2	HI	89.3	30	4274	4144	2812
				35	4356	4224	2866
	2	LO	57.4	40	4443	4308	2923
				50	4843	4696	3186
2	STD	67.5	30	6015	5848	3756	
			35	6130	5960	3828	
2	HI	89.3	40	6253	6080	3905	
			50	6816	6627	4256	
2	LO	23.6	30	6853	6663	4279	
			35	6984	6791	4361	
2	STD	33.6	40	7124	6927	4448	
			50	7765	7550	4849	
2	HI	44.5	30	8335	8104	5205	
			35	8494	8259	5304	
2	LO	57.4	40	8664	8424	5410	
			50	9444	9182	5897	

## Dimensional and Mounting Details

### 2',3',4' - Mounting Dimensions



### 8' - Mounting Dimensions

