

Project		Catalog #		Type	
Prepared by		Notes		Date	



Fail-Safe

FCT LED | LD4 LED

Confinement/Correctional Surface-Mount LED
20" Nominal Width; 2' and 4' Lengths

Typical Applications

Confinement/Security • Inmate Cells • Psychiatric Wards • Secure Corridors • General Population Areas

Interactive Menu

- Order Information [page 2](#)
- Product Specifications [page 2](#)
- Nominal Input Watts/Delivered Lumens [page 3](#)
- Product Warranty

Product Certification



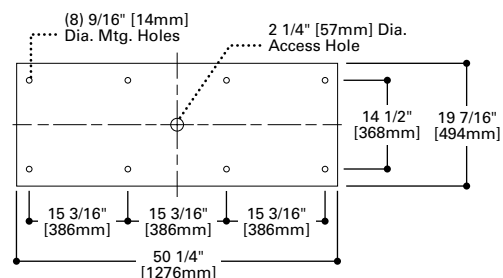
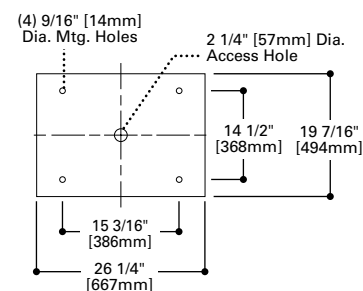
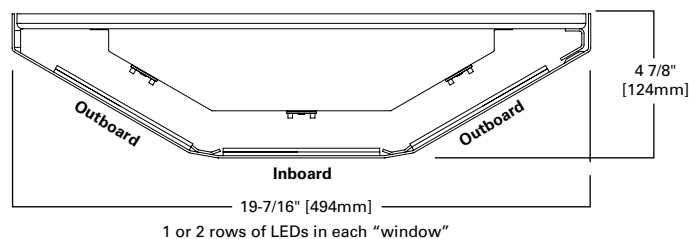
Product Features



Top Product Features

- Surface-mount with 3 Lenses; Low-profile clamshell housing design
- Die-formed 12-, 14- or 16-gauge continuous welded one-piece doorless housing
- Clear or prismatic acrylic, and polycarbonate or clear tempered glass lenses
- Backplate forms an irretrievable blade trap preventing contraband concealment
- 3000K, 3500K, 4000K and 5000K CCT; 80 CRI minimum
- Options to meet Buy American Act requirements

Dimensional and Mounting Details



Order Information

SAMPLE ORDER NUMBER: **FCT-S-4-LD4-2STD/4STD-35-UNV-80/84-EDC2**
FCT-X-4-LD4-1LO/2STD-40-UNV-80/86-EDC2-EL10W

Domestic Preferences	Product	Housing Thickness	Length	LED	Inboard Rows of LEDs	Inboard Illumination Level	Outboard Rows of LEDs	Outboard Illumination Level
Domestic Preferences ⁽⁷⁾	Product	Housing Thickness	Length	LED	Inboard Rows of LEDs	Inboard Illumination Level	Outboard Rows of LEDs	Outboard Illumination Level
[Blank] =Standard BAA =Buy American Act	FCT =Surface Correctional	S=12 ga. (Ultimax) X=14 ga. (Maximum) D=16 ga. (Medium)	2=2' 4=4'	LD4 =LED Version 4.0	Inboard 1=1 Row of LEDs 2=2 Rows of LEDs ⁽⁴⁾	LO =Low STD =Standard HI =High	Outboard 2=2 Rows of LEDs (1 row each side) 4=4 Rows of LEDs (2 rows each side) ⁽⁴⁾	LO =Low STD =Standard HI =High
Notes ⁽⁷⁾ Only product configurations with this designated prefix are built to be compliant with the Buy American Act of 1933 (BAA). Please refer to DOMESTIC PREFERENCES website for more information. Components shipped separately may be separately analyzed under domestic preference requirements.					Notes ⁽⁴⁾ Emergencies not available in the "2row inboard / 4row outboard" configuration.		Notes ⁽⁴⁾ Emergencies not available in the "2row inboard / 4row outboard" configuration.	

Color Temperature	Voltage	Lens Type ⁽¹⁾		Driver	No. of Circuits	Options
Color Temperature	Voltage	Lens Type ⁽¹⁾		Driver	No. of Circuits	Options
30 =3000K 35 =3500K 40 =4000K 50 =5000K	UNV =120V-277V 120 =120V 277 =277V 347 =347V ⁽⁶⁾	Fixture Side 89CW =0.020 Smooth/White Diffuse 80 =0.125 Prismatic Acrylic 81 =0.156 Prismatic Polycarbonate 82 =0.187 Prismatic Polycarbonate	Environment Side 84 =0.125 Clear Polycarbonate 85 =0.187 Clear Polycarbonate 86 =0.250 Clear Polycarbonate 87 =0.375 Clear Polycarbonate 88 =0.500 Clear Polycarbonate 94 =0.187 Clear Tempered Glass 96 =0.250 Clear Tempered Glass 97 =0.375 Clear Tempered Glass	Electronic Driver EDC =Electronic Driver, Non-Dimming EDD =Electronic Driver, Dimming 10% ED1D =Electronic Driver, Dimming 1%	1=1 Circuit 2=2 Circuits ⁽²⁾ 3=3 Circuits	EL7W =Emergency Battery Pack, 7W Output ^{(3), (4), (6)} EL10W =Emergency Battery Pack, 10W Output ^{(3), (4), (6)} LLNL =Linear LED Night Light ⁽⁵⁾ GLR =Fuse and Holder ⁽⁶⁾ 12GA =12 Gauge Backplate Stainless Steel Fixture SSN =Natural Brushed Finish SSP =Polyester Powder Coat Finish Fasteners SF3 =Allen-head (Center-pin reject) 90 =90CRI
	Notes ⁽⁶⁾ 347 emergencies not available. 2ft length with LLNL not available with 347. GLR not available with 347.	Notes ⁽¹⁾ Total lens thickness in combination not to exceed 0.750".			Notes ⁽²⁾ EDC2, EDD2, ED1D2... defaults to inboard/outboard wiring.	Notes ⁽³⁾ Emergency driver energizes the "inboard" LEDs. Emergency options available LO or STD only. ⁽⁴⁾ Emergencies not available in the "2row inboard / 4row outboard" configuration. ⁽⁵⁾ LLNL (placed in inboard window) and is only available with 1row for the "inboard," not available with 2row "inboard." ⁽⁶⁾ 347 emergencies not available. 2ft length with LLNL not available with 347. GLR not available with 347.

Product Specifications

Application

- Confinement/correctional luminaire suitable for use in:
 - Inmate cells
 - Psychiatric wards
 - Secure corridors
 - General population areas

Housing

- Die-formed 12-, 14-, or 16-gauge CRS body construction
- One-piece, seamless housing
- Continuous welded and ground ends
- Maximum impact resistance and prevention of unauthorized fixture penetration
- High gloss, electrostatically applied, White powder coat finish
- Average minimum reflectance 92%

Fasteners and Hinge

- Stainless steel tamper-resistant T20 TORX® screws with center pin reject standard
- Allen head screws with center pin reject optional
- Concealed piano hinge leaves no exposed parts for weapon fabrication and facilitates easy maintenance

Backplate

- Die-formed 14-gauge CRS; 12-gauge option
- Forms an irretrievable blade trap to prevent contraband concealment

Lens and Lens Retention

- Choice of prismatic acrylic, prismatic polycarbonate or on fixture side
- Clear polycarbonate or clear tempered glass on environmental side (see lens options)
- Lens secured by thru-studs
- Vertically adjustable internal CRS hold-downs

LEDs

- Available in 3000K, 3500K, 4000K and 5000K; 80 CRI minimum
- Choice of Standard, Low or High illumination levels
- Projected life is 50,000 hours at 70% lumen maintenance

Electrical

- Electronic driver 120-277V, dimming driver standard
- 0-10V dimming down to 1% or 10%
- Non-dimming available

Compliance

- cULus listed for damp locations

Warranty

- Five-year warranty on LEDs and electrical, consult website for details. www.cooperlighting.com/legal

Nominal Input Watts/Delivered Lumens

 [View IES files](#)

80/84		Inboard (Center Lens)			
Fixture Length	# Modules Inboard	Level	Nominal Input Watts	Nominal Delivered Lumens	LPW
2'	1	LO	12	1398	116.5
	1	STD	17	1872	110.1
	1	HI	22.1	2297	103.9
	2	LO	23.9	2796	117
	2	STD	34.1	3745	109.8
4'	1	LO	23.9	2796	117
	1	STD	34.1	3745	109.8
	1	HI	44.2	4593	103.9
	2	LO	47.9	5593	116.8
	2	STD	68.1	7490	110

80/84		Outboard (2 Outer Lens)			
Fixture Length	# Modules Outboard	Level	Nominal Input Watts	Nominal Delivered Lumens	LPW
2'	2	LO	23.6	2841	120.4
	2	STD	33.3	3773	113.3
	2	HI	43.5	4708	108.2
	4	LO	47.1	5681	120.6
	4	STD	66.6	7547	113.3
4'	2	LO	47.1	5681	120.6
	2	STD	66.6	7547	113.3
	2	HI	87	9415	108.2
	4	LO	94.2	11363	120.6
	4	STD	133.2	15093	113.3

Nominal input wattage values include LED voltage, drive current, and typical driver efficiency. Refer to LM79 data/photometric files for exact delivered lumen values and input wattage. Values in table are nominal values only.

Weight Table

Weight	
2', 14 ga. 80/86 lens RDP	30 lbs.
4', 14 ga. 80/86 lens 0.6725	55 lbs.