

Project		Catalog #		Type	
Prepared by		Notes		Date	



# Fail-Safe

## HVSL2 | HVSL2-SQ | LD4 LED

2" Nominal Width  
 Vandal Resistant Linear LED  
 Steel Housing, Polycarbonate Lens

### Typical Applications

Stairwells • Schools • Hospitals • Corridors • Dormitories • Public restrooms •  
 Common areas • Transit stations

### Interactive Menu

- Order Information [page 2](#)
- Product Specifications [page 2](#)
- Nominal Input Watts/Delivered Lumens [page 3](#)
- Product Warranty

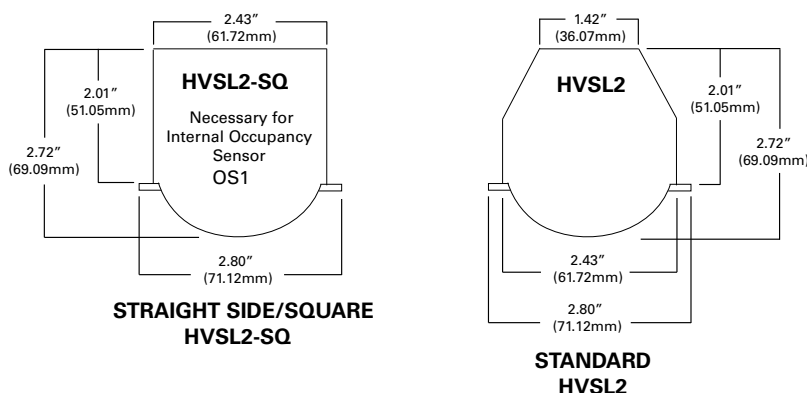
### Product Certification



### Top Product Features

- Narrow 2.5" architectural width
- High Impact Polycarbonate Lens
- Damp Location Standard, Wet Location Optional
- Available in a variety of paint finishes
- Optional NSF Rating
- Up to 4100 Lumens in 4ft length
- Efficacy up to 106 lm/W
- Options to meet Buy American Act requirements

### Dimensional and Mounting Details



[additional product diagrams](#)

## Order Information

SAMPLE NUMBER : HVSL2-4-LD4-STD-40-UNV-O-EDC1  
HVSL2-SQ-4-LD4-HI-40-277-O-EDC1-OS1

Domestic Preferences	Product Family	Length	LED Type	Illumination Level	Color Temperature	Voltage	Lens Type	Driver
Domestic Preferences <sup>(10)</sup>	Product Family	Length	LED Type	Illumination Level	Color Temperature	Voltage	Lens Type	Driver
<b>[Blank]</b> =Standard <b>BAA</b> =Buy American Act	<b>HVSL2</b> =2" Wide HVSL Linear Steel <b>HVSL2-SQ</b> =2" Wide HVSL Linear Steel, straight side, (required for OS1 option)	2=2' Length <sup>(5)</sup> 3=3' Length 4=4' Length 8=8' Length <sup>(1)</sup>	<b>LD4</b> =LED, Version 4.0	<b>STD</b> =Standard <b>LO</b> =Low <b>HI</b> =High	30=3000K Kelvin 35=3500K Kelvin 40=4000K Kelvin 50=5000K Kelvin	<b>UNV</b> =120-277	<b>O</b> =Opal Polycarbonate	<b>EDC1</b> =Single Circuit, Non-Dimming <b>EDD1</b> =Single Circuit, 0-10V 10% Dimming <sup>(4)</sup> <b>ED1D1</b> =Single Circuit, 0-10V 1% Dimming <sup>(4)</sup>
<b>Notes</b>  (10) Only product configurations with this designated prefix are built to be compliant with the Buy American Act of 1933 (BAA). Please refer to <a href="#">DOMESTIC PREFERENCES</a> website for more information. Components shipped separately may be separately analyzed under domestic preference requirements.		<b>Notes</b>  (1) 8ft. unit consists of (2) 4ft. housings joined together at the factory with single 8 ft. lens. (5) No center KO.						<b>Notes</b>  (4) Purple and gray low voltage driver leads connected to driver for EDD1, ED1D1. Not connected for EDC1.

Options	Finish	Accessories (Order Separately)
Options	Finish	Accessories (Order Separately) <sup>(11)</sup>
<b>OS1</b> =Internal Occupancy Sensor Mounted (behind lens). Connected to 1 row LED module. Only available in the HVSL2-SQ, 3', 4', or 8' length. Not available in 2' length. Not available in HVSL2 <sup>(2)</sup> <b>EL10W</b> =10W Emergency Pack <sup>(3)</sup> <b>SF1</b> =TORX® T20 Tamper Proof side screws <b>SF3</b> =Allen-head center pin reject Tamper Proof side screws <b>SHP</b> =Stainless Steel Painted Housing <b>SHPA</b> =Stainless Steel Painted, all Fabricated Components <b>ALH</b> =Aluminum Painted Housing <b>ALHA</b> =Aluminum Painted, all Fabricated Components <b>GSKLNS</b> =Gasket to Lens - Side and Ends <sup>(7)</sup> <b>WL</b> =Wet Location Under Covered Ceiling <b>PMSC</b> =Pendant Mount, Stem/Canopy using standard knockouts in back of housing, (3', 4' & 8' length only) - damp location rated only, (no wet location) <sup>(4)</sup> <b>PMY</b> =Pendant Mount, AYC Chain or Y-Toggle, uses (4) 0.187" x 0.937" holes, (2) each end, (3', 4' & 8' length only) - damp location rated only, (no wet location) <sup>(4)</sup> <b>AM</b> =Anti-microbial matte white paint <b>FSS</b> =Flush side screws (secure lens, non tamper proof) <b>FSSTP</b> =Flush side screws (secure lens, tamper proof)	<b>Blank</b> =Matte White <b>BK</b> =Black <b>DP</b> =Dark Platinum <b>BZ</b> =Bronze  Custom colors available. Furnish RAL number or paint manufacturer/catalog number, or color chip. Consult Technical Support for proper catalog logic.	<b>VRSD</b> =T20 Center Pin Tamperproof TORX®-head bit <b>SCF-XX-B</b> =Fixed Stem Set (see ordering information page 4) <b>XX</b> =Length (6, 8, 12, 24, 36, 48, 60, 72) Used with all surface fixtures as stem sets. One set consists of one stem assembly. Minimum of two sets required per fixture. Not rated WL under covered ceiling. <b>HVSL2-X-CM/BKT</b> =HVSL2 Corner Mount bracket, specify length (X=length=2, 3, 4, 8) <sup>(8)</sup> <b>HVSL2-X-WMAB45</b> =Wall Mount angle bracket, 45 degree, specify length (X=length=2, 3, 4, 8) <sup>(8)</sup> <b>HVSL2-CRNR/CONN</b> =Corner Connector, 90 degree. (not applicable to HVSL2-SQ) <sup>(8)</sup> <b>HVSL2-SQ-X-CM/BKT</b> =HVSL2 Corner Mount bracket, specify length (X=length=2, 3, 4, 8) <sup>(8)</sup> <b>HVSL2-SQ-X-WMAB45</b> =Wall Mount angle bracket, 45 degree, specify length (X=length=2, 3, 4, 8) <sup>(8)</sup>
<b>Notes</b>  (2) When specifying OS1 (internal occupancy sensor) option, the HVSL2-SQ (straight side design) must be designated. (3) Emergency not available in 2ft, or 3ft lengths. (6) Does not include stem, chain, or y-toggle (see page 4 for order information). (7) GSKLNS option is standard with WL option not necessary in catalog.		<b>Notes</b>  (8) Compatible with HVSL2 (reference option/accessory page for bracket dimensions). (9) Compatible with HVSL2-SQ (reference option/accessory page for bracket dimensions). (11) Accessories sold separately will be separately analyzed under domestic preference requirements. Consult factory for further information.

## Product Specifications

### Housing

- Heavy duty, 18 ga. steel housing and end caps provide rigid construction
- Stainless-steel and die-formed aluminum available
- End caps provided with 7/8" KO for continuous row mounting
- Pendant mount standard with (2) 7/8"KOs in the housing back (all lengths except 2'). Stem sets ordered separately as accessory item
- Finished in matte white paint standard. Optional architectural colors available

### Fasteners

- White painted Hex-head screws (4) secure the lens to the housing
- Stainless steel TORX®T20 (SF1) with center reject pin and allen head with center pin reject screws (SF3) optional
- Optional flush side screws (FSS or FSSTP) painted matte white

### Lens

- One-piece extruded UV stabilized, diffuse polycarbonate
- Unique linear ribbed design provides even light distribution while obscuring LED boards
- Internal ribs and smooth exterior reduce dirt build-up and facilitates cleaning.
- Nominal lens thickness = 0.085"

### Reflector

- 18 ga. Steel with white high reflectance polyester powder coat finish. Reflector serves as driver and wireway cover.
- Reflector serves as driver and wireway cover

### Mounting

- Surface mount standard, wall or ceiling.
- Continuous row using end knock-outs

### Light-Emitting Diode (LED)

- LEDs available in 3000K, 3500K, 4000K and 5000K with minimum 80 CRI.

### Transformer/Driver

- Electronic driver. 0-10V dimming standard
- Optional 10% and 1% dimming

### Compliance

- cULus listed for damp locations standard
- Wet location under covered ceiling optional, wall or ceiling mount

### Warranty

- Five-year warranty on LEDs and electrical, consult website for details. [www.cooperlighting.com/legal](http://www.cooperlighting.com/legal)

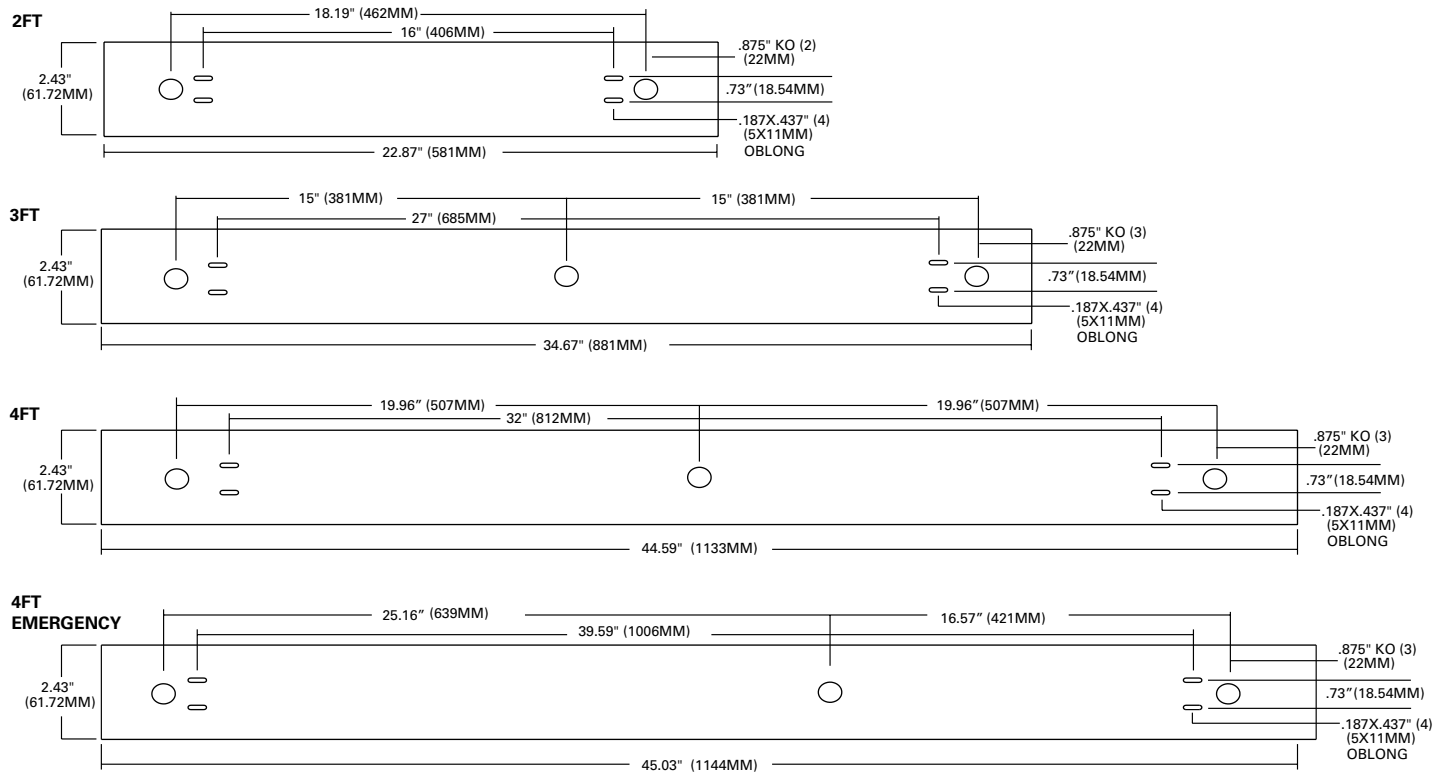
## Nominal Input Watts/Delivered Lumens - 4000K

[View IES files](#)

Fixture	Length	Illumination Level	Nominal Input Watts	Opal Lens	
				Nominal Delivered Lumens	LPW
HVSL2 (4000K)	2'	LO	11.5	1422	123.7
		STD	16.4	1831	111.6
		HI	21.6	2357	109.1
	3'	LO	17.3	2133	123.3
		STD	24.6	2747	111.7
		HI	32.4	3535	109.1
	4'	LO	23.1	2843	123.1
		STD	32.7	3662	112
		HI	43.1	4712	109.3
	8'	LO	46.7	5685	121.7
		STD	66.1	7324	110.8
		HI	87.2	9425	108.1

\* Nominal input wattage values include LED voltage, drive currents and typical driver efficiency. Refer to LM79 data/photometric files for exact delivered lumen values and input wattage. Values in table are nominal values only.

## Dimensional and Mounting Details

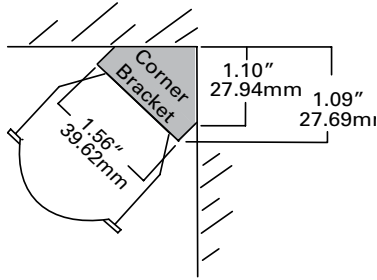


**NOTE:**

\* 8' Fixture incorporates (2) 4' fixtures, attached at the factory, and one single 8' length lens

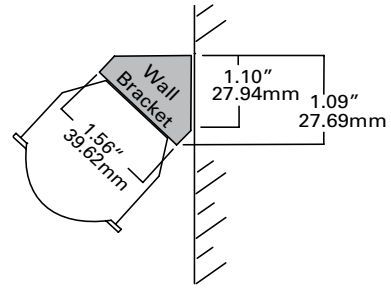
## Corner Mount Bracket (Accessory)

HVSL2-X-CM/BKT=HVSL2 Corner Mount Bracket, specify length,(X=2, 3, 4,8)

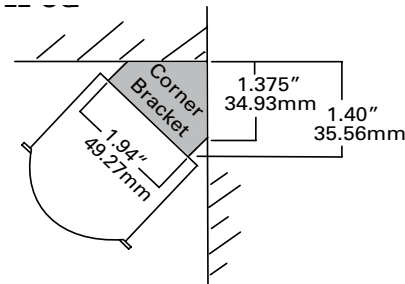


## Wall Mount Angle Bracket (Accessory)

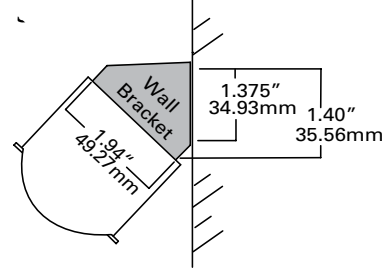
HVSL2-X-WMAB45=HVSL2 Wall Mount Angle Bracket, 45 degree, specify length, (X=2, 3, 4, 8)



HVSL2-SQ-X-CM/BKT=HVSL2-SQ Corner Mount Bracket, specify length, (X=2,3,4,8)

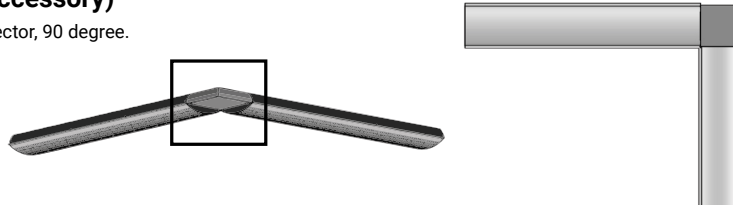


HVSL2-SQ-X-WMAB45=HVSL2-SQ Wall Mount Angle Bracket, 45 degree, specify length, (X=2,3,4,8)



## HVSL2 - Corner Connector (Accessory)

HVSL2-CRNR/CONN=HVSL2 Corner Connector, 90 degree.



## Pendant Mount: Suspension Sets - Stem Sets (Option)

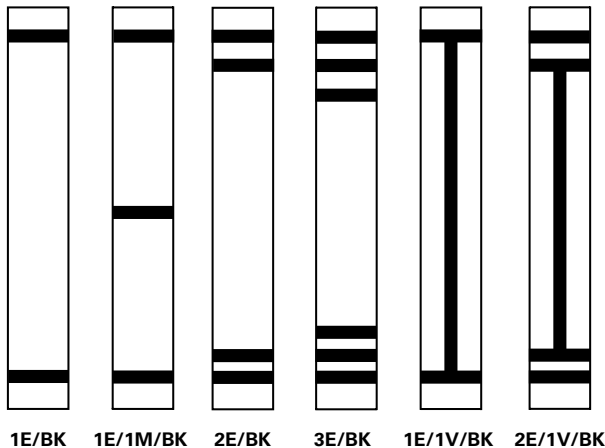
XX=Length (6, 8, 12, 24, 36, 48, 60, 72)

SCF-XX-B=Fixed Stem Set

Used with all surface fixtures as stem sets. One set consists of one stem assembly. Minimum of two sets required per fixture. Not rated WL under covered ceiling.

**NOTE:** Coupler, 3/8" IPS Pipe Coupler to join lengths. Coupler is standard baked white enamel or special order of black. Must specify pendant mount (PMSC or PMY) option on luminaire.

## Decorative Lens/Bands (Option)



## Ordering Logic (Add to end of fixture catalog #)

Examples: HVSL2-4-LD4-1STD-40-UNV-0-EDC1-1E/BK

No of Horizontal band and Location	Vertical Band	Band Color
1E=1 Band on End 2E=2 Bands on End 3E=3 Bands on End 1M=1 Band in Middle 2M=2 Bands in Middle 3M=3 Bands in Middle	1V=1 Band Vertical	BK=Black BR=Bronze BL=Blue

### Notes:

- \*Bands are 1/2" thick
- \*Bands are high durability paint finish
- \*For custom colors, please furnish RAL# or paint manufacturer/catalog number
- \*For other variations or colors not shown, please issue PDR