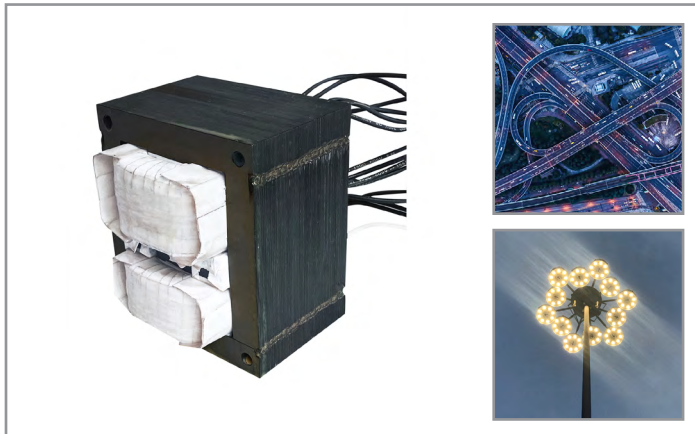


Project		Catalog #		Type	
Prepared by		Notes		Date	



Outdoor

DuraQ

LED Driver

Interactive Menu

- Product Data [page 2](#)
- Product Details [page 2](#)

Product Certifications

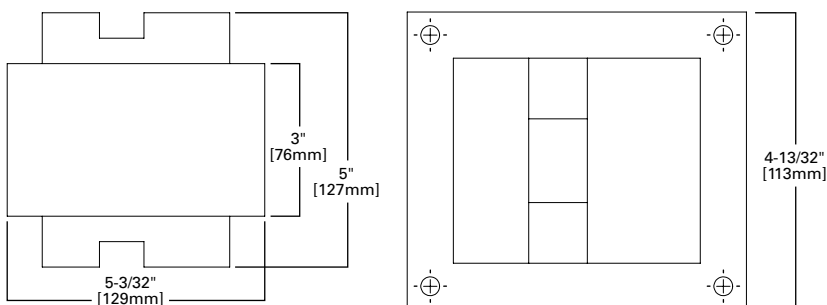


Product Features

- A specialty transformer that regulates the secondary voltage against line and load variation
- Non-destructive 30kV surge suppression
- Built in power conditioner
- Does not emit conducted or radiated EMI
- Limited output short circuit current

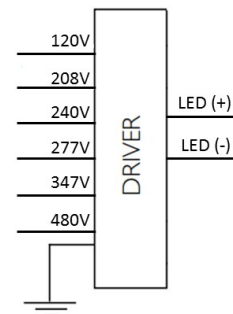
Details

Product Dimensions



Length	Width	Height
5.2"	5"	4.5"

Wiring Diagram



Product Data

Order Information	
Order Code	DRQ
Full Product Name	DuraQ High Performance Driver
Input Voltage - Multi Tap	120/208/240/277/347/480 VAC
Input Current	4.5A @120V, 1.9A @277V, 1.1A @480V
Input Frequency	60Hz
Min. Mains Voltage Operational	108V
Max. Mains Voltage Operational	530V
Inrush Current	Vin: 120V / 480V, Ipeak: 6.0A / 2.5A, T: 1.12ms / 2.26ms
Lightning Surge Protection	30kV
Output Information	
Typical Output Voltage	210Vdc
Output Current (ripple = peak to peak / average)	15% max @ max lout and max Vout Low frequency (≤ 120 Hz) content <5%
Protections	Short Circuit and Open Circuit Protection
Ambient Operating Temp. Range	-40°C to +75°C
Max Case Temperature (Tcase)	75°C
Max Transformer Temperature Rating (Class H)	150°C
Environment & Approbation	
Environmental Protection Rating	UL dry and damp
Agency Approbations	UL8750
Electromagnetic Compliance	FCC Title 47 Part 15 Class A

Lighting Surge Info

ANSI Surge Type	Differential Mode (L-N)	Common Mode (L-G, N-G, L&N-G)
1.2/50 μ s Combination Wave (w/t 2 Ω)	30kV	30kV

Product Details

Electrical Specifications

All the specifications are typical and at 25°C Tcase unless specified otherwise.

Features

- Greater than 70,000 hours at current ripple rating
- Ferro-transformer lifetime greater than 20 years

Benefits

- Enables long life luminaire designs
- Allows luminaire designs for mission critical lighting infrastructure

Product Specifications

Input Voltage (V)	Line Frequency	Input Current (Arms)	Max Input Power	Output Current	Max Output Power	Max Output Voltage	Max Tc	THD @ Max Load	Power Factor @ Max Load	Surge Protection Common / Diff	Weight (Lbs / kgs)	Environmental Protection Rating
120	60Hz	4.5	535W	2.2A	475W	210V	75°C	>20%	>0.98	30kV / 30kV	18.6	UL Dry & Damp
208		2.6										
240		2.2										
277		1.9										
347		1.5										
480		1.1										