

Day-Brite

CFI

by  Signify

Recessed

EvoGrid 1x4

with tunable white technology
3700/4500/5000 lm



Project: _____
 Location: _____
 Cat.No: _____
 Type: _____
 Lamps: _____ Qty: _____
 Notes: _____

Day-Brite / CFI EvoGrid LED recessed utilizes highly reliable and efficient Philips LED platform boards and dimmable driver enabling market leading performance in its category. Its soft opal diffuser with large luminous area minimizes apparent brightness compared to other basket luminaires and provides general lighting perfect for a wide variety of applications. Tunable white light allows color temperature flexibility between 2700K and 6500K CCT.

Ordering guide

Example: 1EVG37L8TW-4-D-UNV-DTW

Width	Family	Ceiling Type	Lumens	Color	Length	Center Diffuser	Voltage	Driver	Options
1	EV	G		8TW	4	D	UNV	DTW	
1 1'	EV EvoGrid	G Grid	37L 3700 nominal delivered lumens 45L 4500 nominal delivered lumens 50L 5000 nominal delivered lumens	8TW 80 CRI, 2700K thru 6500K white light tuning	4 4'	D Diffuse (opal)	UNV Universal Voltage, 120-277 volt	DTW Dual channel tunable white	EMLED Integral emergency, 1100lm nominal, 6500K color circuit only F1/D 3/8" twin flex, 3 wire 18 gauge 6' for dimmable luminaires F2/7W 3/8" single flex, 7 wire 18 gauge 6' for dimmable luminaires GLR Fusing, fast blow DSC Quick driver disconnect

Accessories (order separately)

- **FMA14** – 1'x4' "F" mounting frame for NEMA "F" mounting
- **EVD14L** – EvoGrid 4' replacement lens



1EVG EvoGrid LED recessed 1x4

with tunable white technology, 3700/4500/5000 lumens

Application

- A highly efficient, visually comfortable, architecturally styled recessed LED luminaire designed with a minimalistic strategy to achieve sustainable objectives.
- Low profile standard configuration is only 2-7/8" deep requiring minimal plenum space. Integral emergency (EMLED) configuration is 4-1/8" deep.
- Soft opal diffuser with large luminous area minimizes apparent brightness and provides high visual comfort perfect for a wide variety of general lighting applications like offices, schools, retail, or healthcare.
- Multiple lumen packages over a wide range to provide significant application flexibility over light levels and/or luminaire spacing.
- Directs a controlled amount of light to the higher angles in the room to balance the brightness of the surfaces and eliminate "cave effect" while creating the impression of a larger, brighter space without glare.
- Excellent color rendering with a CRI of 80.
- Designed for use with standard Grid (NEMA "G") or Narrow Grid (NEMA "NFG") ceiling T-bars. Drywall or plaster requirements can be accommodated by using an FMA14 "F" mounting frame (sold separately.)
- Continuous row mount option (CRM) includes wireway covers on each end and on one side of housing.

Construction/Finish

- Uncomplicated design is 2-7/8" (standard configuration) in depth and only requires a few parts outside of the electrical system and hardware, creating several benefits:
 - Less material required
 - Less packaging required
 - Reduced weight
 - Less energy required for construction and assembly
 - More luminaires can be shipped per truck to reduce fuel use and emissions
- Luminaire finish is matte white polyester for a high quality, durable finish.
- T-bar grid clips are integral to body.

Electrical

- Must order compatible Philips Lighting control system.
- LED board is easily accessible from below without tools. Single LED board is replaceable if needed via plug-in connectors to ensure long service life.
- LED driver is accessible from above.
- Five year limited luminaire warranty includes LED boards and driver (emergency driver and batteries have a three year warranty in models so equipped.) Visit www.philips.com/warranties for complete warranty information.
- TM-21 predicted L70 lumen maintenance up to 60,000 hours.
- cETLus listed to UL and CSA standards, suitable for damp locations.

Enclosure

- Opal diffuser provides soft, comfortable lighting while maintaining high efficiency.
- Diffuser requires no frames or fasteners and can be easily removed from below without tools if needed.

General Notes

- All options factory installed.
- All accessories are field installed.
- Many luminaire components, such as reflectors, refractors, lenses, sockets, lampholders, and LEDs are made from various types of plastics which can be adversely affected by airborne contaminants. If sulfur based chemicals, petroleum based products, cleaning solutions, or other contaminants are expected in the intended area of use, consult factory for compatibility.

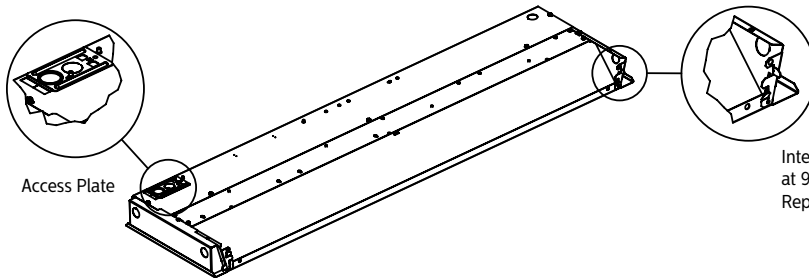
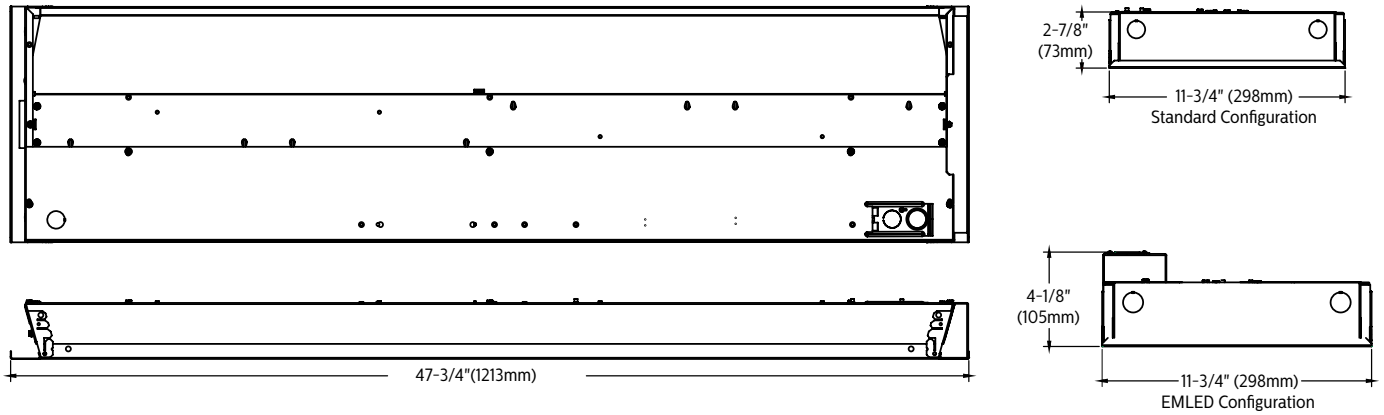
Controls

- Luminaires are not sold individually and are only compatible with load controllers, sensors, user interfaces and front end software from Philips. Philips controls platform allows for more flexibility with customized lighting scenes and behaviors as well as scalability of the tunable white solution into a more extensive lighting network management system. To learn more about the Philips controls solution please visit our tunable white page or <http://www.lighting-products.philips.com/our-brands/philips-controls/dynalite.html>

1EVG EvoGrid LED recessed 1x4

with tunable white technology, 3700/4500/5000 lumens

Dimensions



Integral Grid Clips – Bend upper tab outward at 90°. Bend lower tab outward approx. 20°. Repeat for all four corners.

1EVG EvoGrid LED recessed 1x4

with tunable white technology, 3700/4500/5000 lumens

Electrical Specifications

Input Voltage	120V			277V		
Nominal CCT	2700K			2700K		
Nominal Lumens	3700lm	4500lm	5000lm	3700lm	4500lm	5000lm
Commissioned State						
Power (W)	36.5	44.3	50.0	36.3	44.0	49.5
Current (A)	0.31	0.38	0.42	0.16	0.18	0.2
Power Factor	0.98	0.99	0.99	0.85	0.88	0.90
THD (%)	15	14	12	18	17	16
Off State Power (W)	0.6	0.6	0.6	0.9	0.9	0.9
Non-Commissioned State						
Power (W)	67.0	83.0	92.0	66.0	82.0	91.0
Current (A)	0.56	0.70	0.78	0.26	0.32	0.35

Photometry

1x4 EvoGrid recessed LED with tunable white, 3700 nominal delivered lumens, 2700K CCT

LER – 106

Catalog No.	1EVG37L8TW-4-D-UNV-DTW	Candlepower				Light Distribution			Average Luminance									
Test No.	36222	Angle	End	45	Cross	Degrees	Lumens	% Luminaire	Angle	End	45°	Cross						
S/MH	1.2	0	1491	1491	1491	0-30	1122	29.5	45	12226	13192	13651						
Lamp Type	LED	5	1468	1482	1486	0-40	1801	47.3	55	10954	12528	13229						
Lumens	3807	15	1394	1410	1416	0-60	3094	81.3	65	9801	11755	11437						
Input Watts	36	25	1251	1270	1280	0-90	3807	100.0	75	8528	8919	7098						
		35	1053	1088	1106	0-180	3807	100.0	85	6663	1687	1459						
		45	829	895	926	Coefficients of Utilization												
		55	603	689	728	EFFECTIVE FLOOR CAVITY REFLECTANCE 20 PER (pfc=0.20)												
		65	397	477	464	pcc	80			70			50					
		75	212	221	176	pw	70	50	30	70	50	30	50	30				
		85	56	14	12	RCR												
						0	118	118	118	115	115	115	111	111				
						1	109	105	101	107	103	98	97	94				
						2	100	92	84	96	90	83	85	81				
						3	91	81	72	89	79	71	76	69				
						4	82	71	63	81	69	61	68	60				
						5	77	64	55	75	63	55	60	54				
						6	70	57	48	68	56	48	55	47				
						7	66	53	44	64	52	44	50	42				
						8	60	47	40	59	46	39	46	39				
						9	56	44	35	56	44	35	41	34				
						10	54	40	33	53	40	33	39	32				

Comparative yearly lighting energy cost per 1000 lumens – **\$2.26** based on 3000 hrs. and \$.08 pwr KWH.

The photometric results were obtained in the Day-Brite laboratory which is NVLAP accredited by the National Institute of Standards and Technology.

Photometric values based on test performed in compliance with LM-79.

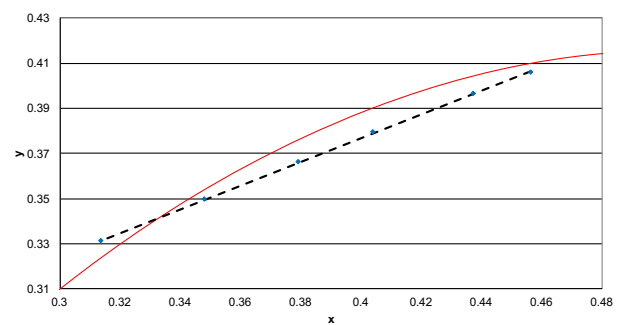
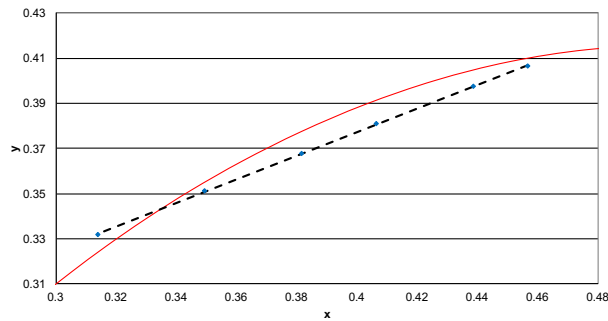
1EVG EvoGrid LED recessed 1x4

with tunable white technology, 3700/4500/5000 lumens

Color information

1x4 EvoGrid 3700lm	2700K	3000K	3500K	4000K	5000K	6500K
Flux	3725	3757	3737	3785	3653	3643
Power	36.4	38.1	35.7	34.9	32.9	29.8
Efficacy	102.3	98.7	104.8	108.6	111.0	122.1
CCT	2716	2919	3393	3904	4836	6423
CRI	83	84	86	87	86	82
R9	18	23	31	34	31	11
x	0.4565	0.4385	0.4064	0.3814	0.3494	0.3138
y	0.4065	0.3974	0.3809	0.3679	0.3510	0.3321
Duv	-0.0012	-0.0029	-0.0046	-0.0045	-0.0020	0.0042

1x4 EvoGrid 4500lm	2700K	3000K	3500K	4000K	5000K	6500K
Flux	4460	4549	4600	4708	4607	4632
Power	44.2	45.5	43.1	42.5	40.6	38.3
Efficacy	100.8	99.9	106.7	110.9	113.6	120.9
CCT	2718	2937	3436	3960	4892	6448
CRI	83	84	86	87	86	82
R9	17	23	31	34	30	11
x	0.4562	0.4369	0.4039	0.3790	0.3477	0.3135
y	0.4063	0.3965	0.3794	0.3663	0.3496	0.3312
Duv	-0.0013	-0.0030	-0.0047	-0.0046	-0.0020	0.0039



1x4 EvoGrid 5000lm	2700K	3000K	3500K	4000K	5000K	6500K
Flux	4950	5040	5070	5169	5017	4982
Power	49.7	50.7	47.6	46.5	44.0	41.4
Efficacy	99.7	99.3	106.6	111.1	113.9	120.3
CCT	2719	2933	3417	3929	4853	6454
CRI	83	84	86	87	86	82
R9	17	23	31	34	31	11
x	0.4560	0.4372	0.4049	0.3802	0.3488	0.3134
y	0.4061	0.3966	0.3798	0.3668	0.3500	0.3309
Duv	-0.0013	-0.0030	-0.0048	-0.0047	-0.0023	0.0038

