

# Day-Brite

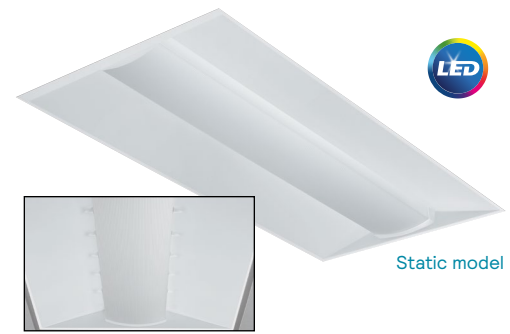


by Signify

Recessed

EvoGrid 2x4

2EVG up to 7400 lumens



Static model



Air return model



Day-Brite / CFI EvoGrid recessed utilizes highly reliable and efficient Philips LED platform boards and dimmable driver enabling market leading performance in its category. Its soft opal diffuser with large luminous area minimizes apparent brightness compared to other basket luminaires and provides general lighting perfect for a wide variety of applications.

Project: \_\_\_\_\_  
 Location: \_\_\_\_\_  
 Cat.No: \_\_\_\_\_  
 Type: \_\_\_\_\_  
 Lamps: \_\_\_\_\_ Qty: \_\_\_\_\_  
 Notes: \_\_\_\_\_

## Ordering guide

example: 2EVG38L840-4-D-UNV-DIM

Width	Family	Ceiling Type	Air Function	Lumens (nominal delivered)	Color	Length	Center Diffuser	Voltage	Driver	Options
2	EV	G			-	4	-	-	-	
2 2'	EV EvoGrid	G Grid	blank Static H Air Return	<b>Standard efficacy</b> 38L 3800 43L 4300 48L 4800 54L 5400 74L 7400  <b>High efficacy</b> 38LH 3800 43LH 4300 48LH 4800 54LH 5400 74LH 7400	830 <sup>1</sup> 80 CRI, 3000K 835 80 CRI, 3500K 840 80 CRI, 4000K 850 <sup>1</sup> 80 CRI, 5000K	4 4'	D Diffuse (opal) DS Diffuse smooth (opal) R Diffuse round ribbed (opal) RS Diffuse round smooth (opal)	UNV Universal Voltage, 120-277 volt 120 <sup>2</sup> 120V 277 <sup>2</sup> 277V 347 347V	DIM <sup>3,8</sup> Dimming Step dimming to 40% input power SDIM <sup>4</sup> MarkX phase dimming LDE Lutron LDE5, 5% dimming DALI DALI	AG Antimicrobial finish F1 3/8" flex, 3 wire 18 gauge 6' F2 3/8" flex, 4 wire 18 gauge 6' F1/D 3/8" twin flex, 3 wire 18 gauge 6' for dimmable luminaires F2/5W 3/8" single flex, 5 wire 18 gauge 6' for dimmable luminaires F2/6W 3/8" single flex, 6 wire 18 gauge 6' for dimmable and emergency luminaires GLR Fusing, fast blow GTD/E <sup>9</sup> UL924 listed Bodine GTD factory installed on driver input GTD/SNSR <sup>9,10</sup> UL924 listed Bodine GTD installed between driver & sensor EMLED Integral emergency battery pack, 1100lm nominal (ballast enclosure on top of luminaire) DSC Quick driver disconnect IAP <sup>5</sup> Integral Interact Pro RF sensor, enables wireless connect lighting control IAO <sup>6</sup> Integral Interact Office daylighting and occupancy sensor, enables wireless connected lighting control SWZG2 <sup>6,7</sup> Integral sensor, daylighting and occupancy, advanced grouping with dwell time and zoning SWZDT <sup>6</sup> Integral sensor, daylighting and occupancy, advanced grouping with dwell time CHIC Chicago Plenum rated CRM <sup>8</sup> Continuous row mount TAP Top access plate

- 3000K and 5000K color temperatures available only on high efficacy configurations
- XDIM requires 120V or 277V specification.
- Integral controls options dimmable to 5% via wireless all switch. See page 2.
- Consult factory for SDIM on 74L and 74LH packages.
- Specify only with -DIM driver option

- Must order SWZ-REMOTE SpaceWise handheld remote with each system order.
- CRM includes side cover with top access plate and additional end cover. 7/8" gap between fixtures.
- Non-controls and SWZG2 configurations are 0-10v dimmable to 1%
- Must be installed in conjunction with a UL1008 device.
- Must be ordered with an integral controls option. Not available with SWZG2 controls option.

## SpaceWise accessories (order separately)

- SWZ-REMOTE** – SpaceWise handheld remote for grouping and configuration (at least one remote required for any SpaceWise installation)
- UID8451/10** – Wireless Dimmer Switch Selector
- UID8461/10** – Wireless Scene Selector

## Other accessories (order separately)

- FMA24** – 2'x4' "F" mounting frame for NEMA "F" mounting
- EVD4L** – EvoGrid 2'x4' rectangular ribbed replacement lens
- EVDS4L** – EvoGrid 2'x4' rectangular smooth replacement lens
- EVR4L** – EvoGrid 2'x4' round ribbed replacement lens
- EVR54L** – EvoGrid 2'x4' round smooth replacement lens
- FSK24** – 2'x4' surface mount field installation kit (factory welded seams), order with -TAP (top access plate) option (SWZG2 and EMLED option not available)
- FSF24** – 2'x4' surface mount field assembly kit, order with -TAP (top access plate) option (SWZG2 and EMLED option not available)



interact ready.

# 2EVG EvoGrid recessed 2x4

up to 7400 lumens

## Ordering guide – PoE controls (Static & Tunable White)

example: 2EVG43L8TW-4-D-LV-POE-IAO

Width	Family	Ceiling Type	Air Function	Lumens (nominal delivered)	Color	Length	Center Diffuser	Voltage	Driver	Options	
2	EV	G			–	4	–	LV	–	POE	
2 2'	EV EvoGrid	G Grid	<b>Blank</b> Static <b>H</b> Air return	<b>38L</b> 3800 <b>43L</b> 4300 <b>48L</b> 4800	<u>Static White</u> <b>830</b> 80 CRI, 3000K <b>835</b> 80 CRI, 3500K <b>840</b> 80 CRI, 4000K <b>850</b> 80 CRI, 5000K  <u>Color Tuning</u> <b>8TW</b> 80CRI, 2700K thru 6500K tunable white	4 4'	<b>D</b> Diffuse (opal) <b>DS</b> Diffuse smooth (opal) <b>R</b> Diffuse round ribbed (opal) <b>RS</b> Diffuse round smooth (opal)	<b>LV</b> Low voltage	<b>POE</b> Power over ethernet	<b>AG</b> <b>EMPOE</b> <sup>1</sup>  <b>IAO</b>	Antimicrobial finish 600lm integral emergency driver and battery pack Integral Interact Office daylighting and occupancy sensor, enables wireless connected lighting control

1 Indicator light and test switch located on housing side panel.

## Ordering guide – DALI Controls (Tunable White)

example: 2EVG43L8TW-4-D-UNV-DTW-IAO

Width	Family	Ceiling Type	Air Function	Lumens (nominal delivered)	Color	Length	Center Diffuser	Voltage	Driver	Options	
2	EV	G			–	4	–	UNV	–	DTW	
2 2'	EV EvoGrid	G Grid	<b>Blank</b> Static <b>H</b> Air return	<b>39L</b> 3900 <b>43L</b> 4300 <b>49L</b> 4900 <b>56L</b> 5600 <b>65L</b> 6500	<b>8TW</b> 80CRI, 2700K thru 6500K tunable white	4 4'	<b>D</b> Diffuse (opal) <b>DS</b> Diffuse smooth (opal) <b>R</b> Diffuse round ribbed (opal) <b>RS</b> Diffuse round smooth (opal)	<b>UNV</b> Universal Voltage, 120-277 volt	<b>DTW</b> Dual channel tunable white	<b>AG</b> <b>F1/D</b>  <b>F2/7W</b> <b>EMLED</b>  <b>IAO</b>  <b>GLR</b> <b>DSC</b>	Antimicrobial finish 3/8" twin flex, 3 wire 18 gauge 6' for dimmable luminaires 3/8" single flex, 7 wire 18 gauge 6' for emergency Factory wired Bodine BSL310 integral emergency pack. Nominal 1100lm Integral Interact Office daylighting and occupancy sensor, enables wireless connected lighting control Fusing, fast blow Quick driver disconnect

# 2EVG EvoGrid recessed 2x4

up to 7400 lumens

## Application

- A highly efficient, visually comfortable, architecturally styled recessed LED luminaire designed with a minimalistic strategy to achieve sustainable objectives.
- Low profile configuration is only 2-3/4" deep, requiring minimal plenum space.
- Soft opal diffuser with large luminous area minimizes apparent brightness and provides high visual comfort perfect for a wide variety of general lighting applications like offices, schools, retail, or healthcare.
- Multiple lumen packages over a wide range to provide significant application flexibility over light levels and/or luminaire spacing.
- Directs a controlled amount of light to the higher angles in the room to balance the brightness of the surfaces and eliminate "cave effect" while creating the impression of a larger, brighter space without glare.
- Excellent color rendering with a CRI of 80.
- LEDs are an excellent source for use with controls since dimming or frequent switching does not degrade the performance or life of the source. Integral or external sensors are available for use.
- Designed for use with standard Grid (NEMA "G") or Narrow Grid (NEMA "NFG") ceiling T-bars. Drywall or plaster requirements can be accommodated by using an FMA24 "F" mounting frame (sold separately).
- Continuous row mount option (CRM) includes wireway covers on each end and on one side of housing.

## Construction/Finish

- Uncomplicated design is 2-3/4" in depth and only requires a few parts outside of the electrical system and hardware, creating several benefits:
  - Less material required
  - Less packaging required
  - Reduced weight
  - Less energy required for construction and assembly
  - More luminaires can be shipped per truck to reduce fuel use and emissions

- Luminaire finish is matte white polyester for a high quality, durable finish.
- T-bar grid clips are integral to body.
- Access plate located on end provides easy field wiring. TAP option provides top mounted access plate.

## Electrical

- Integral sensor options for occupancy sensing and/or daylight harvesting are available for additional energy savings with no reduction of life or increase in installation labor.
- Total luminaire efficacy exceeding 139 LPW (lumens per Watt) with high efficiency packages.
- LED board is easily accessible from below without tools. Single LED board is replaceable if needed via plug-in connectors to ensure long service life.
- LED driver is accessible from above.
- Emergency driver is accessible from above. To estimate lumen output in emergency mode, multiply emergency pack wattage by efficacy, then by 1.10. Typical lumen output is 1300lm for EMLED.
- The GTD/E option is used to bypass wall switches and allow luminaire operation on auxiliary power. Generator transfer requires installation in conjunction with a UL1008 listed device.
- The GTD/SNSR option is used to bypass integrated sensor control in the event of utility power loss. Generator transfer requires installation in conjunction with a UL1008 listed device.
- Step dim 100/40% and additional dimming options available.
- 5 year manufacturer's limited warranty. Visit [signify.com/warranties](http://signify.com/warranties) for complete warranty information.
- TM-21 predicted L70 lumen maintenance up to 80,000 hours for high efficacy and 50,000 hours for standard efficacy configurations.
- cETLus listed to UL and CSA standards, suitable for damp locations.
- EvoGrid luminaires are DesignLights Consortium® qualified. Please see the DLC QPL list for exact catalog numbers, [www.designlights.org/QPL](http://www.designlights.org/QPL).

## Enclosure

- Opal diffuser provides soft, comfortable lighting while maintaining high efficiency.
- Diffuser requires no frames or fasteners and can be easily removed from below without tools if needed.

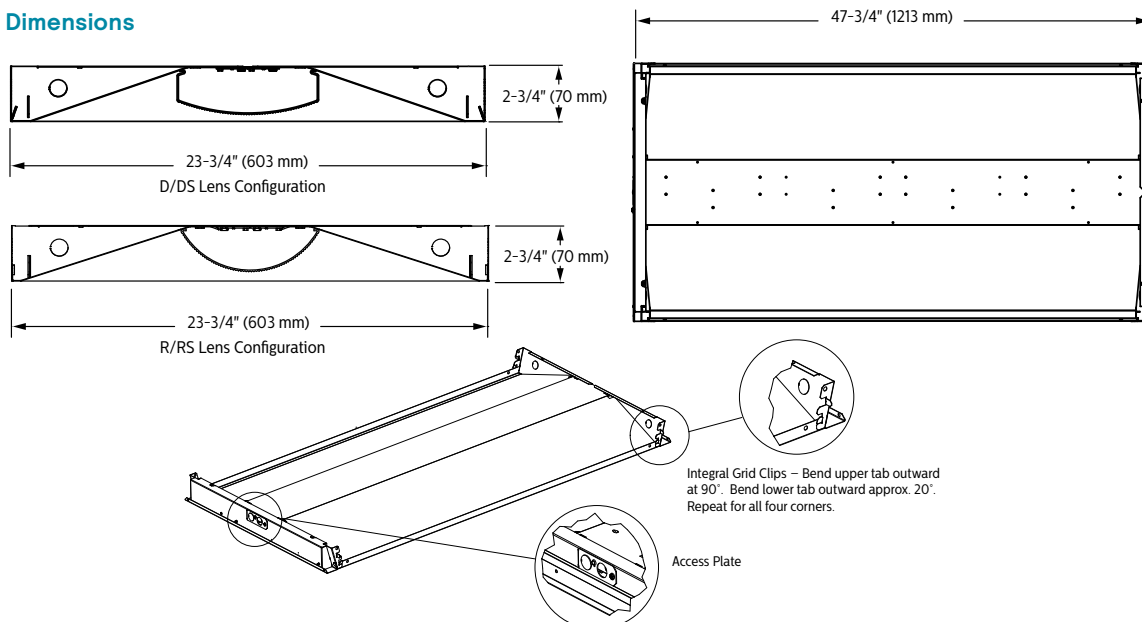
## General Notes

- All options factory installed.
- All accessories are field installed.
- Many luminaire components, such as reflectors, refractors, lenses, sockets, lampholders, and LEDs are made from various types of plastics which can be adversely affected by airborne contaminants. If sulfur based chemicals, petroleum based products, cleaning solutions, or other contaminants are expected in the intended area of use, consult factory for compatibility.

## Energy data

Luminaire	Catalog Number	Input Power	Efficacy
2x4	2EVG38L840-4-D	37	110
	2EVG43L840-4-D	41	108
	2EVG48L840-4-D	48	105
	2EVG54L840-4-D	55	103
	2EVG74L840-4-D	83	93
	2EVG38L840-4-R	31	124
	2EVG43L840-4-R	35	124
	2EVG48L840-4-R	40	122
	2EVG54L840-4-R	46	120
	2EVG74L840-4-R	67	111
2x4 High Efficacy	2EVG38LH840-4-D	27	139
	2EVG43LH840-4-D	32	139
	2EVG48LH840-4-D	36	138
	2EVG54LH840-4-D	39	137
	2EVG74LH840-4-D	56	134
	2EVG38LH840-4-R	26	142
	2EVG43LH840-4-R	30	142
	2EVG48LH840-4-R	34	143
2EVG54LH840-4-R	39	143	
2EVG74LH840-4-R	53	140	

## Dimensions



# 2EVG EvoGrid recessed 2x4

up to 7400 lumens

## Wireless Controls Options

### SpaceWise DT (SWZDT)

- Standalone daylight and occupancy sensing with advanced grouping and dwell time
- Commissioning via compatible Android phone and Philips Field App
- Dimming via compatible Zigbee wireless wall switch only (see link below for details)
- Register for the commissioning app at <http://registration.componentcloud.philips.com/appregistration/>
- Integral sensing options may not be combined
- For more information including recommended switches, refer to the following: –

**SWZDT** – [www.usa.lighting.philips.com/systems/lighting-systems/spacewise](http://www.usa.lighting.philips.com/systems/lighting-systems/spacewise)

### SpaceWise (SWZG2)

- Commissioning via SWZ-REMOTE handheld remote, must order a minimum of one per installation
- Integral sensing options may not be combined
- 0-10V dimmable to 1%
- For more information on the sensor, please refer to [www.lightingproducts.signify.com/documents/webdb2/DayBrite/pdf/SWZG2\\_sensor.pdf](http://www.lightingproducts.signify.com/documents/webdb2/DayBrite/pdf/SWZG2_sensor.pdf)
- Visit [www.usa.lighting.philips.com/systems/lighting-systems/spacewise](http://www.usa.lighting.philips.com/systems/lighting-systems/spacewise) for more information about SpaceWise Technology (SWZG2)

### Interact Pro (IAP)

- Interact Pro brings the power of connected lighting to **small and medium businesses** without the complexity usually associated with connected lighting.
- Interact Pro includes an app, a portal and a broad portfolio of wireless Luminaires, lamps and retrofit kits all working on the same system.
- Commissioning via Interact Pro App (Android or iPhone)
- Prepare commissioning remotely via Interact Pro portal
- Requires compatible Interact Pro Gateway and internet connectivity for commissioning
- Compatible with UID8451/10 ZigBee Greenpower wireless dimmer switch
- Compatible with wireless Occ sensor (OCC SENSOR IA CM IP42 WH 10/1) or wireless Day/Occ sensor (OCC MULTI SENSOR IA CM WH 10/1)
- For more information on Interact Pro visit: [www.interact-lighting.com/pro](http://www.interact-lighting.com/pro)
- For more information on Interact Ready visit: [www.philips.com/interact-ready](http://www.philips.com/interact-ready)

### EvoGrid shown with integral sensor



SWZG2 sensor shown.

All other controls options have the sensor centrally located centered on one end flange.

### Interact Office (IAO)

- A wireless IoT connected lighting solution for **large enterprises** that span across multiple floors, buildings and require multiple gateways.
- View all your projects under one dashboard and easily compare insights from multiple projects in one view.
- Compatible Zigbee Green Power wall dimmer and wireless Occupancy or Daylight & Occupancy sensors available.
- Use Interact Office software and insights to increase building efficiency, achieve building wide integration and optimize space through occupancy analytics.
- Supports advanced IoT Apps on wayfinding, room/desk reservation and offers open APIs
- Requires compatible Interact Office Gateway and internet connectivity for commissioning.
- For more information on Interact Office Wireless, visit: [www.interact-lighting.com/office](http://www.interact-lighting.com/office) or [www.usa.lighting.philips.com/systems/system-areas/offices](http://www.usa.lighting.philips.com/systems/system-areas/offices)

## Wired Controls Options

### Interact Office Wired (PoE), Static White & Tunable White

- PoE based IoT connected lighting solution for large enterprises that span across multiple floors, buildings and require multiple gateways.
- Use Interact Office software and insights to increase building efficiency, achieve building wide integration and optimize space through occupancy analytics.
- Human centric lighting through tunable white technology – Dynamic behaviors via scheduled lighting recipes mimicking daylight patterns or supporting biorhythms.
- Supports advanced IoT Apps on Personal Control, Space Management, wayfinding, room/desk reservation and offers open APIs for light control and data exchange.
- PoE lighting controller is accessible from below.
- Integral sensor option for occupancy sensing (PIR) and/or daylight harvesting available for additional energy savings.
- Optional integral emergency controller and battery pack provides 600lm nominal output. Test switch and indicator light mounted on side of chassis on one end.
- Emergency battery has a 3 month pre-installed shelf life, and must be stored and installed in environments of 20C to 30C (-4F to 86F) ambient, and 45-85% relative humidity.
- For more information on Interact Office Wired, visit: [www.interact-lighting.com/office](http://www.interact-lighting.com/office) or [www.usa.lighting.philips.com/systems/system-areas/offices](http://www.usa.lighting.philips.com/systems/system-areas/offices)

### Tunable White with DALI

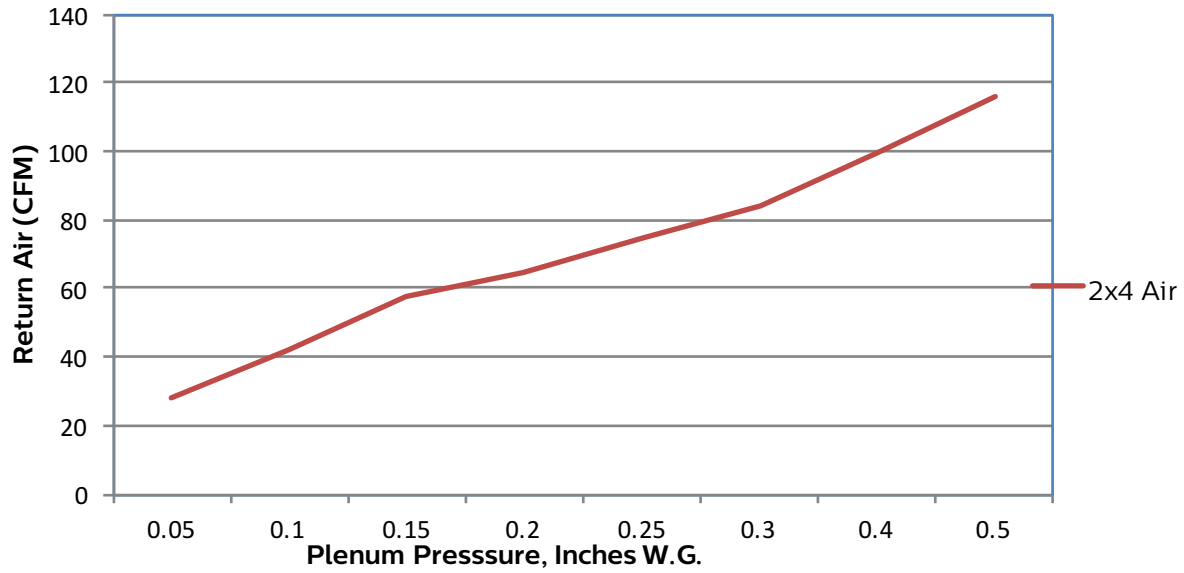
- Signify tunable white solutions are designed to help maximize the influence of lighting on your daily life.
- Dynamic behaviors via scheduled lighting recipes mimicking daylight patterns or supporting biorhythms.
- Scene setting via lighting pre-sets based on various combinations of lighting color temperature and intensity.

[www.usa.lighting.philips.com/products/product-highlights/tunable-white-technology](http://www.usa.lighting.philips.com/products/product-highlights/tunable-white-technology)

# 2EVG EvoGrid recessed 2x4

up to 7400 lumens

## Air return data



Pressure	0.05	0.1	0.15	0.2	0.25	0.3	0.4	0.5
CFM	28	42	58	65	75	84	100	116
Noise	<15	24	34	37	41	45	47	49



# 2EVG EvoGrid recessed 2x4

up to 7400 lumens

## Photometry

2x4 EvoGrid recessed LED, high efficacy, 4800 nominal delivered lumens

LER – 138

<b>Catalog No.</b>	2EVG48LH840-4-D-UNV-DIM
<b>Test No.</b>	34935
<b>S/MH</b>	1.2
<b>Lamp Type</b>	LED
<b>Lumens</b>	4897
<b>Input Watts</b>	36

Comparative yearly lighting energy cost per 1000 lumens – **\$1.74** based on 3000 hrs. and \$.08 pwr KWH.

The photometric results were obtained in the Day-Brite laboratory which is NVLAP accredited by the National Institute of Standards and Technology.

Photometric values based on test performed in compliance with LM-79.

### Candlepower

Angle	End	45	Cross	Back-45
0	1778	1778	1778	1778
5	1749	1771	1782	1771
15	1669	1701	1714	1701
25	1509	1545	1566	1545
35	1283	1333	1364	1333
45	1022	1087	1134	1087
55	751	838	913	838
65	494	613	704	613
75	264	393	465	393
85	74	114	119	114

### Light Distribution

Degrees	Lumens	% Luminaire
0-30	1358	27.7
0-40	2189	44.7
0-60	3775	77.1
0-90	4899	100.0
0-180	4899	100.0

### Average Luminance

Zone	End	45°	Cross
45	7532	8012	8362
55	6828	7614	8295
65	6090	7566	8686
75	5319	7922	9360
85	4450	6795	7112

### Coefficients of Utilization

EFFECTIVE FLOOR CAVITY REFLECTANCE 20 PER (pfc=0.20)									
pcc	80			70			50		
pw	70	50	30	70	50	30	50	30	
RCR									
0	118	118	118	115	115	115	111	111	
1	108	103	98	106	101	96	96	93	
2	97	90	82	95	88	81	83	79	
3	90	79	69	86	77	68	73	68	
4	81	69	60	80	68	59	66	58	
5	75	61	53	72	60	53	58	52	
6	69	56	46	68	55	46	53	46	
7	65	51	41	63	50	41	48	40	
8	59	46	38	58	46	38	45	36	
9	56	42	34	55	41	34	40	34	
10	53	40	32	52	39	30	38	30	

2x4 EvoGrid recessed LED, 4800 nominal delivered lumens

LER – 105

<b>Catalog No.</b>	2EVG48L840-4-D-UNV-DIM
<b>Test No.</b>	34090
<b>S/MH</b>	1.2
<b>Lamp Type</b>	LED
<b>Lumens</b>	5015
<b>Input Watts</b>	48

Comparative yearly lighting energy cost per 1000 lumens – **\$1.29** based on 3000 hrs. and \$.08 pwr KWH.

The photometric results were obtained in the Day-Brite laboratory which is NVLAP accredited by the National Institute of Standards and Technology.

Photometric values based on test performed in compliance with LM-79.

### Candlepower

Angle	End	45	Cross	Back-45
0	1830	1830	1830	1777
5	1813	1820	1825	1770
15	1725	1739	1746	1700
25	1554	1571	1582	1541
35	1317	1347	1365	1330
45	1048	1096	1132	1086
55	771	851	930	838
65	510	642	733	614
75	279	417	485	394
85	81	123	132	111

### Light Distribution

Degrees	Lumens	% Luminaire
0-30	1387	27.6
0-40	2228	44.4
0-60	3836	76.4
0-90	5019	100.0
0-180	5020	100.0

### Average Luminance

Zone	End	45°	Cross
45	7725	8080	8349
55	7009	7732	8457
65	6290	7919	9045
75	5613	8389	9769
85	4870	7342	7903

### Coefficients of Utilization

EFFECTIVE FLOOR CAVITY REFLECTANCE 20 PER (pfc=0.20)									
pcc	80			70			50		
pw	70	50	30	70	50	30	50	30	
RCR									
0	118	118	118	115	115	115	111	111	
1	108	103	98	105	101	96	96	93	
2	97	90	82	94	88	81	83	79	
3	89	79	69	86	77	68	73	67	
4	81	69	60	79	68	59	66	57	
5	75	61	53	72	60	52	58	51	
6	69	56	46	68	55	46	53	46	
7	65	51	41	63	50	41	47	40	
8	59	46	38	58	46	38	44	36	
9	56	42	34	55	41	34	40	34	
10	53	39	32	51	39	30	38	30	

# 2EVG EvoGrid recessed 2x4

up to 7400 lumens

2x4 EvoGrid recessed LED, high efficacy, 4800 nominal delivered lumens

LER – 144

<b>Catalog No.</b>	2EVG48LH840-4-R-UNV-DIM
<b>Test No.</b>	38774
<b>S/MH</b>	1.3
<b>Lamp Type</b>	LED
<b>Lumens</b>	4927
<b>Input Watts</b>	34

Comparative yearly lighting energy cost per 1000 lumens – **\$1.67** based on 3000 hrs. and \$.08 pwr KWH.

The photometric results were obtained in the Philips Day-Brite laboratory which is NVLAP accredited by the National Institute of Standards and Technology.

Photometric values based on test performed in compliance with LM-79.

### Candlepower

Angle	End	45	Cross	Back-45
0	1666	1666	1666	1666
5	1634	1661	1671	1661
15	1560	1599	1619	1599
25	1420	1475	1513	1475
35	1227	1304	1363	1304
45	998	1101	1186	1101
55	752	886	998	886
65	468	674	780	674
75	238	408	502	408
85	54	132	128	132

### Light Distribution

Degrees	Lumens	% Luminaire
0-30	1286	26.1
0-40	2100	42.6
0-60	3736	75.8
0-90	4932	100.0
0-180	4932	100.0

### Average Luminance

Zone	End	45°	Cross
45	7359	8120	8741
55	6833	8050	9071
65	5772	8313	9621
75	4800	8216	10115
85	3218	7919	7650

### Coefficients of Utilization

EFFECTIVE FLOOR CAVITY REFLECTANCE 20 PER (pfc=0.20)								
pcc	80			70			50	
pw	70	50	30	70	50	30	50	30
RCR								
0	118	118	118	115	115	115	111	111
1	108	103	97	105	101	95	95	93
2	97	89	81	94	86	81	83	78
3	89	78	68	85	76	68	72	67
4	81	68	59	79	68	58	65	57
5	75	60	52	72	59	52	57	50
6	68	55	46	67	54	46	52	45
7	64	50	40	61	48	40	47	40
8	58	46	36	57	45	36	44	35
9	56	41	34	54	40	33	40	33
10	52	39	30	51	38	29	36	29

2x4 EvoGrid recessed LED, 4800 nominal delivered lumens

LER – 122

<b>Catalog No.</b>	2EVG48L840-4-R-UNV-DIM
<b>Test No.</b>	38786
<b>S/MH</b>	1.3
<b>Lamp Type</b>	LED
<b>Lumens</b>	4903
<b>Input Watts</b>	40

Comparative yearly lighting energy cost per 1000 lumens – **\$1.97** based on 3000 hrs. and \$.08 pwr KWH.

The photometric results were obtained in the Philips Day-Brite laboratory which is NVLAP accredited by the National Institute of Standards and Technology.

Photometric values based on test performed in compliance with LM-79.

### Candlepower

Angle	End	45	Cross	Back-45
0	1658	1658	1658	1658
5	1623	1653	1664	1653
15	1550	1591	1612	1591
25	1411	1468	1506	1468
35	1219	1299	1357	1299
45	991	1097	1179	1097
55	747	882	992	882
65	465	673	775	673
75	236	405	480	405
85	54	127	126	127

### Light Distribution

Degrees	Lumens	% Luminaire
0-30	1280	26.1
0-40	2090	42.6
0-60	3719	75.8
0-90	4902	100.0
0-180	4903	100.0

### Average Luminance

Zone	End	45°	Cross
45	7307	8088	8690
55	6785	8019	9012
65	5735	8297	9556
75	4761	8153	9672
85	3206	7578	7524

### Coefficients of Utilization

EFFECTIVE FLOOR CAVITY REFLECTANCE 20 PER (pfc=0.20)								
pcc	80			70			50	
pw	70	50	30	70	50	30	50	30
RCR								
0	118	118	118	115	115	115	111	111
1	108	103	97	105	101	96	95	93
2	97	89	81	94	86	81	83	78
3	89	78	69	85	76	68	72	67
4	81	68	59	79	68	58	65	57
5	75	60	52	72	59	52	57	50
6	68	55	46	67	54	46	52	45
7	64	50	40	61	48	40	47	40
8	58	46	36	57	45	36	44	35
9	56	41	34	54	40	33	40	33
10	52	39	30	51	38	29	36	29

# 2EVG EvoGrid recessed 2x4

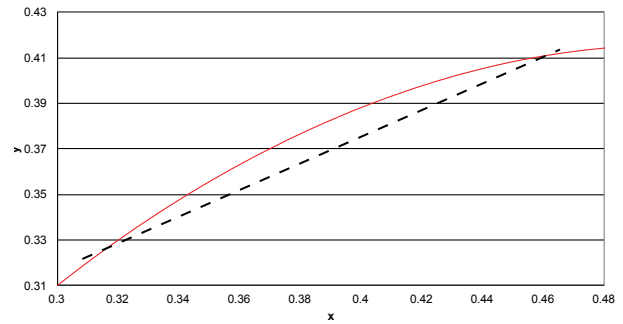
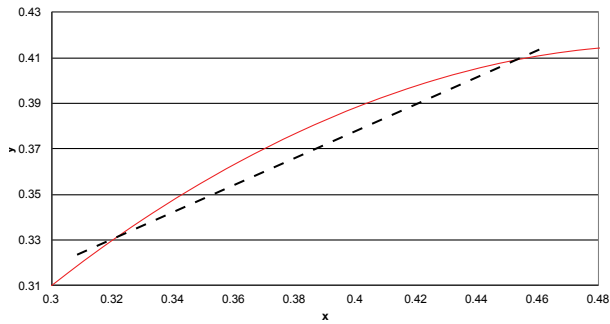
up to 7400 lumens

Tunable White with PoE

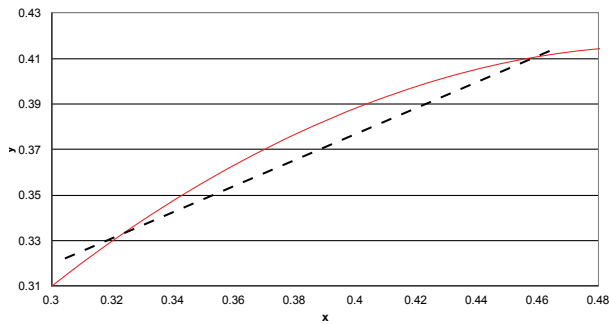
Color Information

2x4 EvoGrid 3800lm	2700K	3000K	3500K	4000K	5000K	6500K
<b>Flux</b>	3833	3836	3840	3843	3848	3854
<b>Power</b>	27	27	27	27	26	26
<b>Efficacy</b>	140	141	143	145	147	149
<b>CCT</b>	82	84	86	87	87	85
<b>CRI</b>	15	23	32	37	35	22
<b>R9</b>	18	23	31	34	31	11

2x4 EvoGrid 4300lm	2700K	3000K	3500K	4000K	5000K	6500K
<b>Flux</b>	4327	4330	4334	4338	4343	4349
<b>Power</b>	33	31	31	30	30	30
<b>Efficacy</b>	132	138	141	143	147	147
<b>CCT</b>	82	84	86	87	87	85
<b>CRI</b>	14	23	32	36	35	23
<b>R9</b>	18	23	31	34	31	11



2x4 EvoGrid 4800lm	2700K	3000K	3500K	4000K	5000K	6500K
<b>Flux</b>	4815	4817	4819	4821	4824	4827
<b>Power</b>	39	36	35	34	33	34
<b>Efficacy</b>	125	134	138	141	146	144
<b>CCT</b>	82	84	86	87	87	85
<b>CRI</b>	14	22	31	36	35	23
<b>R9</b>	18	23	31	34	31	11





# 2EVG EvoGrid recessed 2x4

up to 7400 lumens

Tunable White with DALI

## Electrical Specifications

Input Voltage	120V				277V			
Nominal CCT	2700K				2700K			
Nominal Lumens	3900	4300	4900	5600	3900	4300	4900	5600
<b>Commissioned State</b>								
Power (W)	41.8	47.0	55.9	65.7	41.5	46.4	55.0	64.3
Current (A)	0.4	0.4	0.5	0.6	0.2	0.2	0.2	0.3
Power Factor	1.0	1.0	1.0	1.0	0.9	0.9	0.9	0.9
THD (%)	14.0	13.0	11.0	10.0	17.0	16.5	16.0	14.5
Off State Power (W)	0.6	0.6	0.6	0.6	0.9	0.9	0.9	0.9
<b>Non-Commissioned State</b>								
Power (W)	78.0	87.0	102.0	116.0	77.0	86.0	101.0	113.0
Current (A)	0.7	0.7	0.9	1.0	0.3	0.3	0.4	0.4

## Photometry

2x4 EvoGrid recessed LED with tunable white, 4300 nominal delivered lumens, 2700K CCT

LER - 110

Catalog No.	2EVG43L8TW-4-D-UNV-DTW
Test No.	36529
S/MH	1.2
Lamp Type	LED
Lumens	4527
Input Watts	39
CCT	2700K

Comparative yearly lighting energy cost per 1000 lumens – **\$2.18** based on 3000 hrs. and \$.08 pwr KWH.

The photometric results were obtained in the Philips Day-Brite laboratory which is NVLAP accredited by the National Institute of Standards and Technology.

Photometric values based on test performed in compliance with LM-79.

Candlepower				
Angle	End	45	Cross	
0	1602	1602	1602	
5	1576	1594	1600	
15	1502	1525	1538	
25	1361	1392	1412	
35	1168	1209	1238	
45	948	1009	1052	
55	712	800	868	
65	446	602	678	
75	229	365	420	
85	51	113	121	

Light Distribution		
Degrees	Lumens	% Luminaire
0-30	1221	27.0
0-40	1977	43.7
0-60	3465	76.5
0-90	4526	100.0
0-180	4527	100.0

Average Luminance				
Zone	End	45'	Cross	
45	6988	7435	7754	
55	6474	7266	7886	
65	5501	7420	8357	
75	4621	7358	8453	
85	3074	6753	7255	

### Coefficients of Utilization

EFFECTIVE FLOOR CAVITY REFLECTANCE 20 PER (pfc=0.20)								
pcc	80			70			50	
	70	50	30	70	50	30	50	30
pw								
RCR								
0	118	118	118	115	115	115	111	111
1	108	103	98	105	101	96	96	93
2	97	90	81	94	88	81	83	79
3	89	78	69	86	77	68	73	67
4	81	68	59	79	68	59	66	57
5	75	61	53	72	60	52	58	51
6	68	56	46	67	55	46	53	45
7	64	51	41	63	50	40	47	40
8	59	46	38	57	45	36	44	36
9	56	41	34	55	41	34	40	33
10	52	39	30	51	39	30	38	30

# 2EVG EvoGrid recessed 2x4

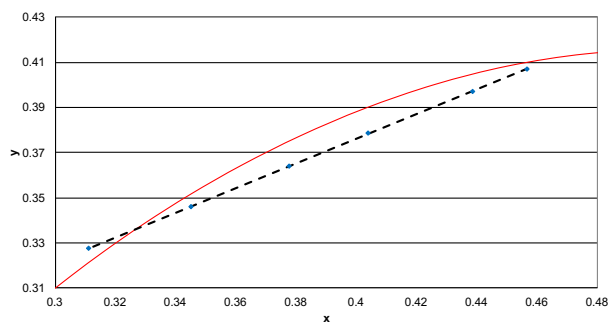
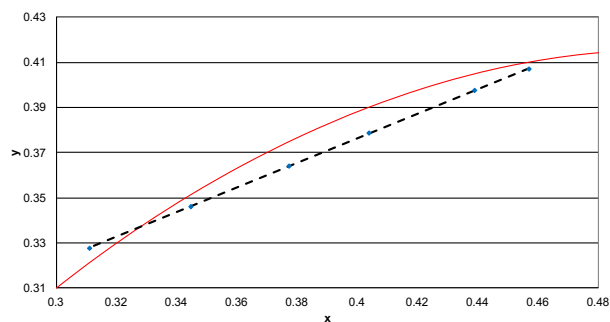
up to 7400 lumens

Tunable White with DALI

## Color information

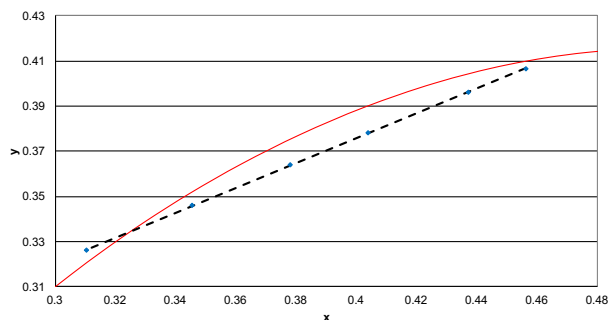
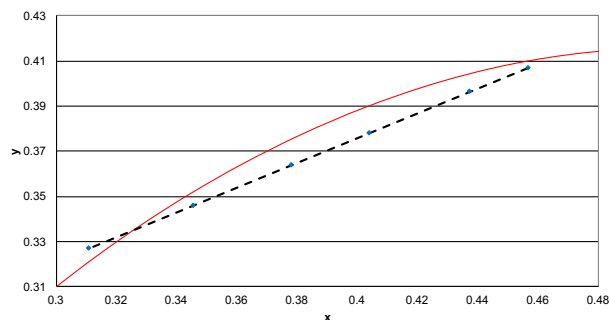
2x4 EvoGrid 3900lm	2700K	3000K	3500K	4000K	5000K	6500K
<b>Flux</b>	3790	3798	3805	3885	3811	3919
<b>Power</b>	41.4	42.9	40.7	40.2	38.2	35.4
<b>Efficacy</b>	91.5	88.6	93.5	96.8	99.8	110.7
<b>CCT</b>	2716	2915	3431	3990	5000	6606
<b>CRI</b>	83	84	87	87	87	84
<b>R9</b>	18	23	33	37	32	16
<b>x</b>	0.4568	0.4387	0.4037	0.3774	0.3446	0.3110
<b>y</b>	0.4071	0.3974	0.3784	0.3641	0.3462	0.3278
<b>Duv</b>	-0.0010	-0.0029	-0.0051	-0.0051	-0.0026	0.0034

2x4 EvoGrid 4300lm	2700K	3000K	3500K	4000K	5000K	6500K
<b>Flux</b>	4247	4257	4259	4346	4254	4349
<b>Power</b>	46.5	47.8	45.2	44.4	42.2	39.4
<b>Efficacy</b>	91.2	89.0	94.3	97.9	100.8	110.3
<b>CCT</b>	2717	2916	3427	3980	4984	6610
<b>CRI</b>	83	84	86	87	87	84
<b>R9</b>	18	23	33	37	34	16
<b>x</b>	0.4567	0.4386	0.4039	0.3777	0.3450	0.3110
<b>y</b>	0.4070	0.3973	0.3784	0.3642	0.3462	0.3275
<b>Duv</b>	-0.0011	-0.0029	-0.0052	-0.0052	-0.0027	0.0033



2x4 EvoGrid 4900lm	2700K	3000K	3500K	4000K	5000K	6500K
<b>Flux</b>	4969	5017	4983	5079	4955	5030
<b>Power</b>	55.0	56.2	52.4	51.3	48.7	45.8
<b>Efficacy</b>	90.3	89.3	95.1	99.1	101.9	109.8
<b>CCT</b>	2719	2932	3424	3972	4971	6625
<b>CRI</b>	83	84	86	87	87	84
<b>R9</b>	18	23	32	37	34	16
<b>x</b>	0.4564	0.4372	0.4040	0.3780	0.3454	0.3108
<b>y</b>	0.4068	0.3965	0.3784	0.3641	0.3461	0.3271
<b>Duv</b>	-0.0011	-0.0031	-0.0052	-0.0053	-0.0029	0.0032

2x4 EvoGrid 5600lm	2700K	3000K	3500K	4000K	5000K	6500K
<b>Flux</b>	5805	5877	5833	5936	5780	5813
<b>Power</b>	65.6	66.2	61.2	59.7	56.2	53.7
<b>Efficacy</b>	88.5	88.8	95.4	99.5	102.9	108.3
<b>CCT</b>	2722	2934	3423	3965	4962	6654
<b>CRI</b>	83	84	86	87	87	84
<b>R9</b>	17	23	32	36	34	16
<b>x</b>	0.4561	0.4370	0.4039	0.3781	0.3456	0.3104
<b>y</b>	0.4066	0.3962	0.3781	0.3639	0.3459	0.3264
<b>Duv</b>	-0.0012	-0.0032	-0.0053	-0.0055	-0.0031	0.0030



The information presented in this document is not intended as any commercial offer and does not form part of any quotation or contract.

