



PHILIPS

Controls Indoor

SpaceWise DT

Savings, control, and comfort without complexity

Philips SpaceWise wireless technology DT, featuring **dwell time** functionality, is a flexible intuitive controls solution for hassle-free energy savings and user satisfaction.

Code compliance and energy savings should not be complex

Upgrade your lighting system to Philips LED, and rest assured that you are meeting code regulations. The intuitive SpaceWise DT solution delivers greater energy savings & lighting zoning flexibility than traditional controls, along with lower labor costs.

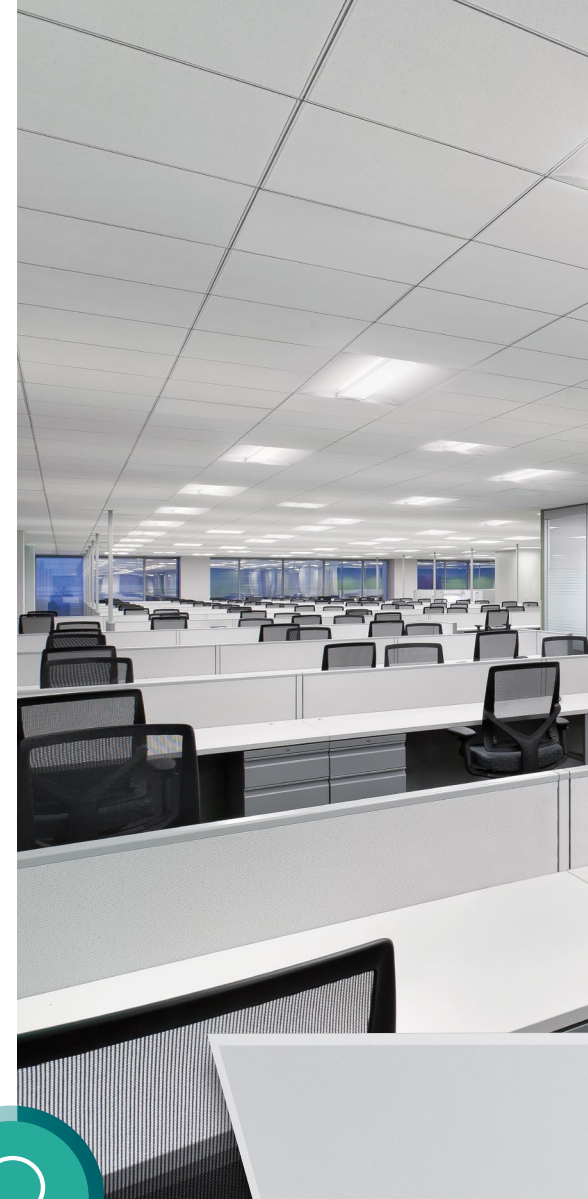
- **Installation is simple** – no additional controls or wiring changes required.
- Robust and reliable control solution provides **instant benefits and peace of mind** that your customer will appreciate.
- **Granular dimming** feature along with **dwell time** enables for more soothing transition of light levels that is comfortable to occupants.
- **Intuitive interface via mobile app** does not require expertise or extensive training.
- **Up to 75% energy savings** due to integrated controls and advanced grouping*.
- **More cost effective** than network controls options.

* Based on installation in the GSA-operated Metcalfe Federal Building located in Chicago, Illinois. This project was installed under the GSA Green Proving Ground Program. Savings were 75% over US lighting average baseline and 69% over GSA average lighting baseline. Go to www.gsa.gov/portal/content/240287 for details.

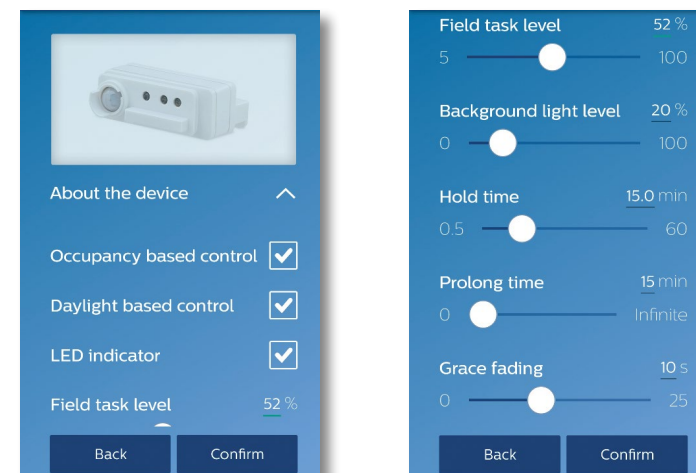


reduce energy costs
by up to

75%*



New Configuration Tool



SpaceWise DT mobile app offers simplified commissioning and greater flexibility, making saving energy easy.

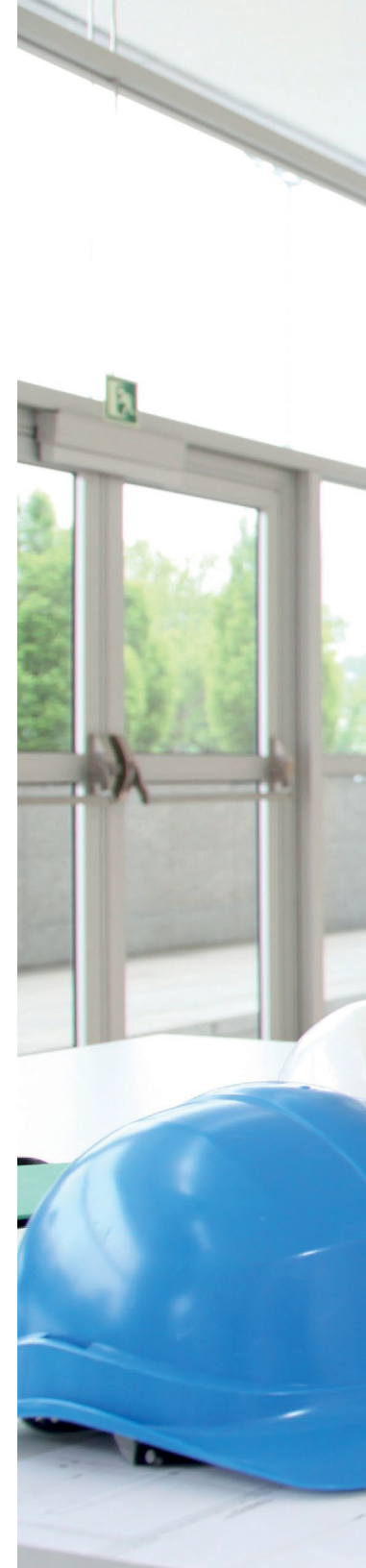
- Visualize the commissioning steps on Philips field apps for Android devices.
- Alter sensor configuration parameters at your finger tips.
- Take charge of your installation, flexibility reconfigure the entire lighting group or only select luminaires.
- Save the sensor settings as a unique profile on the cloud for future access and ease of recalling what was exactly implemented.
- Read out energy consumption via NFC for individual fixtures.



Managing every occupant's satisfaction should be simple

Lighting control should be intuitive and easy to manage, empowering facility managers to keep occupants comfortable and satisfied.

- **Dwell time functionality** eliminates discomfort of lights flashing on and off in spaces as occupants pass through for short periods of time. The occupants must "dwell" in the space for a certain amount of time before the lights brighten to full output.
- **Granular dimming** provides lighting when and where it is needed and facilitates occupant comfort through fade up or fade down instead of instant on/off.
- **Advanced luminaire grouping** reduces operating costs without sacrificing user comfort.
- Facility managers can **change luminaire grouping** to better align with occupancy patterns throughout the life of the installation.
- Provides **user ownership of modifications**, saving time because the facility manager is empowered to respond to occupants' needs without relying on the manufacturer.





Energy savings explained

1

When the first occupant enters, the lighting group brightens up gently to the background level of 20%.



2

Areas that are occupied ramp up to eco-on level of 100%, while vacant areas remain at background level of 20%.



3

When people leave for meetings or lunch significant energy is saved because all unoccupied areas dim to the background level then as well.



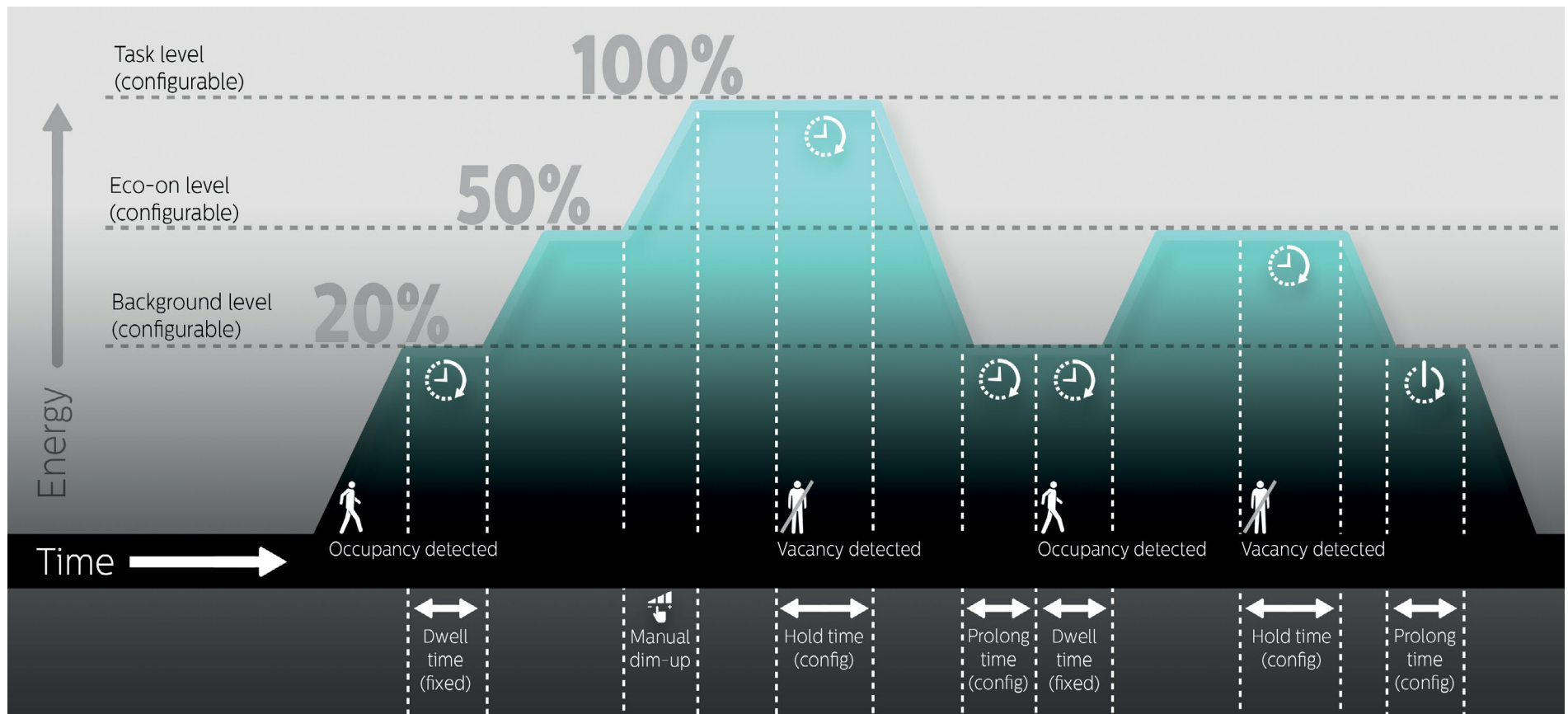
4

The lighting group turns off after the last person leaves.



Sensor timing and light levels

- When occupancy is detected, lights turn ON at background level (20%), and after fixed "dwell time" they automatically ramp up to 50% (eco-on level).
- Hold time is the occupancy timeout or the time for which lights remain at the task level after vacancy has been detected.
- After hold time has elapsed, lights ramp down to configurable background level.
- With dwell time enabled, when another person passes through the space, lights remain at background level for about 10 seconds before ramping up. This prevents lights from instantly ramping up when people are only passing through areas.
- If the occupant dwells in the space, the lights ramp back up to eco-on level again.
- Once vacancy is detected again, and the area remains unoccupied for the prolong time that you have configured, the lights turn off.



Dwell time explained

Office scene **without dwell time** enabled

- As people move around in corridors and pass by work stations, changing light levels may distract other employees.
- Instant ramping from background to task level upon transient motion detection wastes significant energy because **luminaires stay at task level** (until the hold time has elapsed) even though there is no longer anyone in that space.



Office scene **with dwell time** enabled

- With dwell time, **lights remain at background levels** unless the passer-by remains in the given area for about 10 seconds
- Prevents unnecessary light level changes, saves additional energy, and allows for working occupants to remain undisturbed.



Understand our portfolio

| | SpaceWise | SpaceWise DT | Philips SNS200 | DAY/OCC (SNS 102) | Competition |
|--------------------------------------|-----------|------------------|------------------|-------------------|-------------|
| Office application | ✓ | ✓ | ✓ | ✓ | ✓ |
| Industrial application | ✓ | ✗ | ✗ | ✗ | ✗ |
| Luminaire to luminaire grouping | ✓ | ✓ | ✓ | ✗ | ✓ |
| Occupancy sensing | ✓ | ✓ | ✓ | ✓ | ✓ |
| Occupancy sharing / granular dimming | ✓ | ✓ | ✓ | ✗ | ✗ |
| Dwell time | ✓ | ✓ | ✗ | ✗ | ✗ |
| Auto daylight calibration | ✓ | upon power cycle | upon power cycle | upon power cycle | ✗ |
| Manual ON / Auto OFF | ✓ | ✓ | ✓ | ✓ | ✓ |
| Eco-on level | ✗ | ✓ | ✓ | ✓ | ✗ |
| Zoning within group | ✓ | ✗ | ✗ | ✗ | ✗ |
| Background level | ✓ | ✓ | ✓ | ✓ | ✗ |
| Commissioning type | remote | Android app | Android app | Android app | remote/app |
| Application modes | ✓ | ✗ | ✗ | ✗ | ✗ |
| Task tuning | ✓ | ✓ | ✓ | ✓ | ✓ |
| Maximum luminaires per group | 50 | 40 | 40 | 0 | varies |



Explore your choices

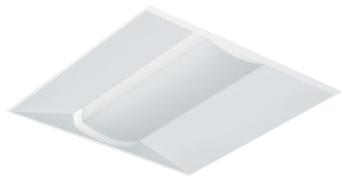
PHILIPS Day-Brite CFI



ClearAppeal LED recessed



DuaLED LED recessed



EvoGrid LED recessed



FluxGrid LED recessed



PHILIPS



EvoKit LED recessed retrofit

PHILIPS LIGHTOLIER



LyteProfile LED downlight



Calculite LED downlight gen 3

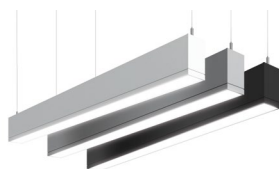
PHILIPS
LEDALITE



Sona LED suspended



FloatPlane LED suspended



TruGroove LED suspended and recessed



BoldPlay LED suspended



SilkSpace LED recessed

Technical details

How to order SpaceWise DT with Philips, Philips Day-Brite, and Philips Ledalite luminaires

SpaceWise DT is integrated into the luminaires if you select the SWZDT option code for Philips Day-Brite luminaires and the SZ option code for Philips Ledalite luminaires. Consult the individual luminaire spec sheets and SpaceWise DT spec sheets for exact catalog logic and complete product information.



SpaceWise DT sensor

How to order SpaceWise DT with Philips Lightolier luminaires

The SpaceWise wireless technology DT downlight remote controller SWZDT is sold as an accessory for Philips Lightolier Calculite and LyteProfile luminaires. Consult the individual luminaire spec sheets and SpaceWise DT downlight remote controller spec sheet for exact catalog logic and complete product information. There are also other Philips Lightolier luminaires with 0-10V option that are compatible, please consult factory for more info.



SpaceWise DT downlight remote controller

How to get started with SpaceWise DT

First, you will need an Android smartphone. Preferred phones are listed on www.philips.com/SpaceWise. Then, register for Philips Field Apps at: www.usa.lighting.philips.com/support/support/tools/. During registration select EasySense NFC and EasySense IR options. Once registered, you will be provided with a username & password to download the Philips Field App from the Google Play store. For a complete App user manual visit www.philips.com/SpaceWise.

FloatPlane with SpaceWise DT



EvoGrid with SpaceWise DT

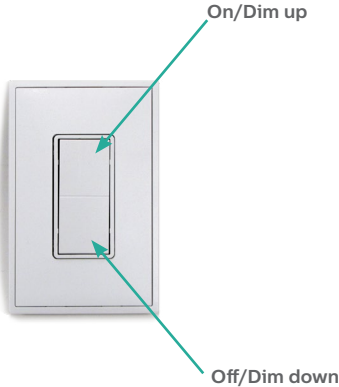

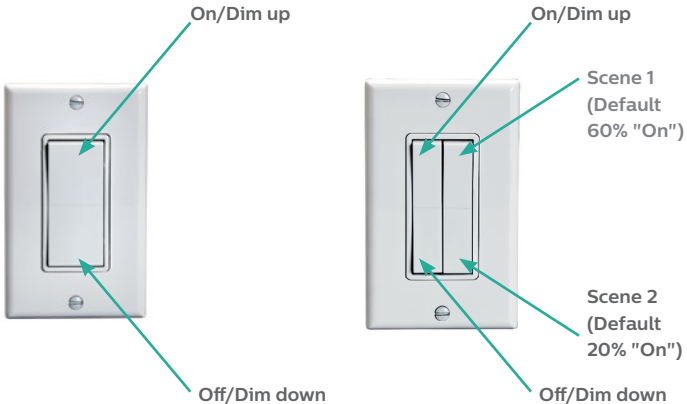


EvoKit with SpaceWise DT



Calculite gen 3 downlight

Compatible Wireless Switches

| Manufacturer | Model | Style | Image |
|-------------------------|------------|----------------------------|--|
| Philips | UID8451/10 | Single Rocker Self Powered |  |
| Illumra | ZBT-S1AWH | Single Rocker Self Powered |  |
| | ZBT-S2AWH | Dual Rocker Self Powered | |
| Magnum Energy Solutions | MZ-SW1 | Single Rocker Self Powered |  |
| | MZ-SW2 | Dual Rocker Self Powered | |
| | MZ-ASW1 | Single Rocker Self Powered | |
| | MZ-ASW2 | Dual Rocker Self Powered | |
| | MZ-ESRP | Single Rocker Self Powered | |
| | MZ-EDRP | Dual Rocker Self Powered | |

• Max no. sensors per switch: 40



© 2017 Philips Lighting Holding B.V. All rights reserved. Philips reserves the right to make changes in specifications and/or to discontinue any product at any time without notice or obligation and will not be liable for any consequences resulting from the use of this publication.

PLt-17021BR 06/17 www.philips.com/SpaceWise

Philips Lighting
North America Corporation
200 Franklin Square Drive
Somerset, NJ 08873
Tel. 855-486-2216

Philips Lighting Canada Ltd.
281 Hillmount Rd,
Markham, ON,
Canada L6C 2S3
Tel. 800-668-9008