

Day-Brite

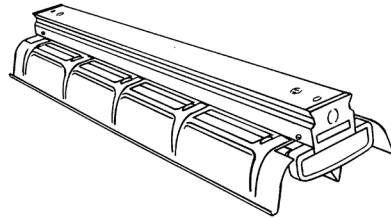
CFI

by  Signify

Industrial

2F specification

T8 or T12 high output



Project: _____
 Location: _____
 Cat.No: _____
 Type: _____
 Lamps: _____ Qty: _____
 Notes: _____

Day-Brite / CFI 2F specification industrial is a heavy duty turret industrial fluorescent luminaire providing 25% upright with a center "V" giving 30° crosswise sheilding.

Ordering guide

Example: 2F286HO-PP-UNV-1/2-EB

Family	No. of Lamps per Cross Section	Lamp Type	Reflector Options	Voltage	Options
2F	2	—	—	—	
2F Industrial (25% upright)	(not included) 2	44HO 44W T8 380 mA (48") 48HO 60W T12 800 mA (48") 86HO 86W T8 380 mA (96") 96HO 110W T12 800 mA (96")	PP Painted Polyester PPS Painted Polyester solid top	UNV Universal voltage 120/277V 120 120V 277 277V 347 347V	1/2 One 2-lamp ballast EB Electronic ballast, <20% THD E7 B60 emerg. ballast, 600-700 lumens, 120/277V E5 B50 emerg. ballast, U.S. or Canada market, 1100-1400 lumens, UNV E5SCAN B50-CAN emerg. ballast, Canada market, 1100-1400 lumens, 120/347V E5ST B50ST emerg. ballast w/self test, 1100-1400 lumens, UNV GLR Fusing, fast blow Power Connect modular wiring available, see sheet 1604-OA for details

Accessories (order separately)

- **CS-400** Rigid Canopy
- **CS-500** 42" Top Swivel Canopy
- **CS-12** 12" Stem
- **CS-18** 18" Stem
- **CS-24** 24" Stem
- **CS-30** 30" Stem
- **CS-36** 36" Stem
- **CS-48** 48" Stem
- **FL-111** Sliding hanger, conduit/stem/screw
- **FL-117** Hook, chain (requires FL-111)
- **FL-119** Hook, messenger cable (requires FL-111)
- **FL-123** 5' chain (w/S-hooks) set
- **FL-173** 4' wire guard (use 2 for 8')
- **FL-3** Channel coupling
- **FL-5** Reflector end cap (pair)
- **N-3381** Universal joint aligner, octagonal box, 3/4" I.P.S.



2F Specification industrial

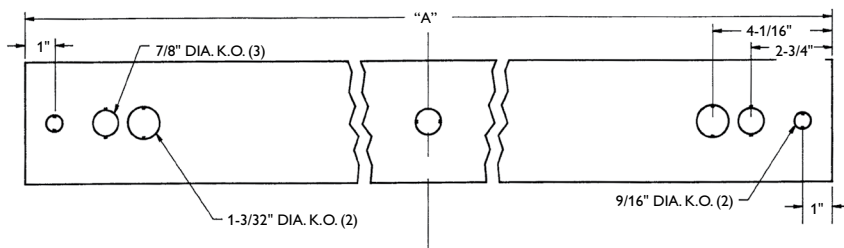
Construction/Finish

- Reflectors provide 25% uplight. Solid tops are available.
- Multiple knockouts for convenient installation.
- Heavy duty channel of code gauge die formed steel,
- Reflectors have stiffening ribs for rigidity and provide 30° crosswise shielding.
- Twist-lock reflector thumb screws.
- Continuous rows utilize a simple concealed coupling, FL-3 (optional).

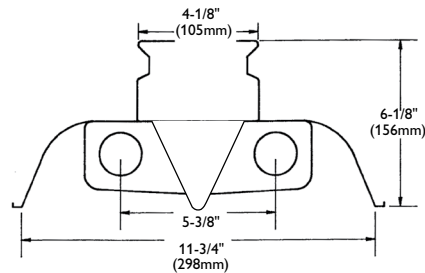
Electrical

- cULus listed for damp locations.
- Self-contained fluorescent emergency power packs can be incorporated.
- Spring-loaded turret lampholders provide positive lamp engagement and electrical contact.
- **IMPORTANT! High Output Luminaires must be suspended with a minimum 1-1/2" clearance to ceiling.**
- Day-Brite's standard luminaires for high output T8 (380mA) and T12 (800mA) include ballasts rated for -20°F starting temperature.

Dimensions



DIM "A"		
4' Channel	(1227mm)	48-5/16"
8' Channel	(2446mm)	96-5/16"



2F Specification industrial

Photometry

2F 8' 2 Lamp F96HOES

Efficiency – 84.8%

LER – 64

TER – 37

		Candlepower				Light Distribution				Average Luminance								
		Angle	End	45	Cross	Degrees	Lumens	% Lamp	% Luminaire	Angle	End	45'	Cross					
Catalog No.	2F296HO-PP-1/2-EB	0	3561	3561	3561	0-30	2848	17.8	21.0	45	4403	4839	4846					
Test No.	42365	5	3552	3544	3598	0-40	4750	29.7	35.0	55	4286	4695	3859					
S/MH	1.4	15	3443	3482	3560	0-60	8564	53.5	63.1	65	4147	3463	2247					
Lamp Type	F96HOES	25	3218	3315	3381	0-90	10465	65.4	77.1	75	3820	1985	1776					
Lumens/Lamp	8000	35	2877	3021	3203	90-180	3110	19.4	22.9	85	3028	2130	2361					
Ballast Factor	0.84	45	2466	2710	2714	0-180	13575	84.8	100.0									
Input Watts	178	55	1947	2133	1753	Coefficients of Utilization												
Comparative yearly lighting energy cost per 1000 lumens – \$3.75 based on 3000 hrs. and \$.08 pwr KWH. The photometric results were obtained in the Day-Brite laboratory which is NVLAP accredited by the National Institute of Standards and Technology.		65	1388	1159	752	EFFECTIVE FLOOR CAVITY REFLECTANCE 20 PER (pfc=0.20)												
		75	783	407	364	pcc	80			70			50					
		85	209	147	163	pw	70	50	30	70	50	30	50	30				
		95	42	118	146	RCR												
		105	219	199	227	0	95	95	95	92	92	92	82	82				
		115	459	337	321	1	88	83	81	83	81	78	72	70				
		125	702	499	470	2	80	73	68	76	70	66	64	60				
		135	926	682	623	3	72	65	57	69	61	56	56	52				
		145	1107	760	795	4	67	56	50	64	55	48	50	45				
		155	1255	843	842	5	61	51	44	57	48	41	45	40				
		165	1349	1119	1012	6	56	46	39	54	44	36	40	34				
		175	1394	1355	1352	7	52	40	34	50	40	33	36	30				
						8	48	38	30	46	35	29	34	28				
						9	45	34	28	42	33	27	30	25				
						10	41	32	25	40	30	25	28	23				



Some luminaires use fluorescent or high intensity discharge (HID) lamps that contain small amounts of mercury. Such lamps are labeled, "Contain Mercury" and/or the symbol "HG". Lamps that contain mercury must be disposed of in accordance with local requirements. Information regarding lamp recycling and disposal can be found at www.lamprecycle.org

