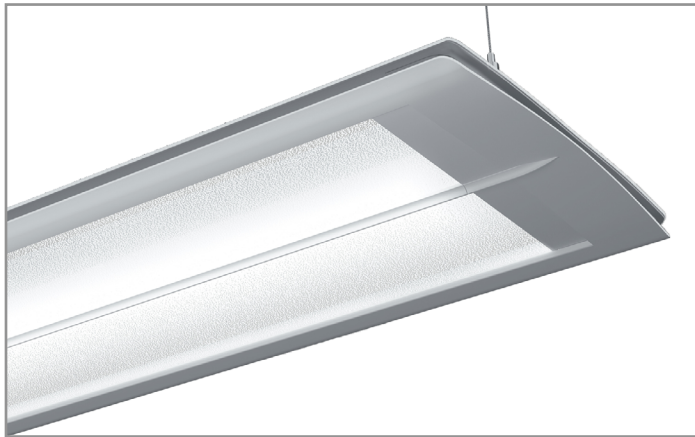


Project		Catalog #		Type	
Prepared by		Notes		Date	



# Corelite

## Divide - DSI

WaveStream™ LED  
Suspended  
Direct / Indirect

### Typical Applications

Office • Education • Healthcare • Hospitality • Retail

### Interactive Menu

- Order Information [page 2](#)
- Product Specifications [page 2](#)
- Quick-Tab Alignment [page 3](#)
- Photometric Data [page 3](#)
- Energy and Performance Data [page 3](#)
- Control Systems [page 4](#)
- Product Warranty

### Top Product Features

- Leverages our patented WaveStream™ Technology with AccuAim™ optics
- Advanced optical control with optimal illumination
- Multiple lumen packages with efficacies up to 140 lumens per watt
- Modern, ultra-shallow design
- Available in 4', 8', and Continuous runs
- Options to meet Buy American Act requirements

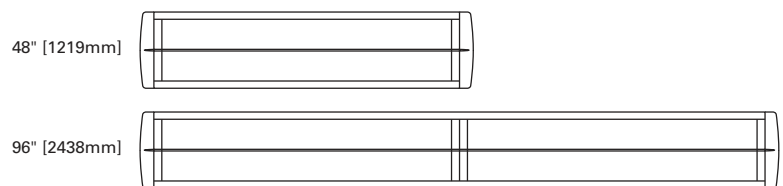
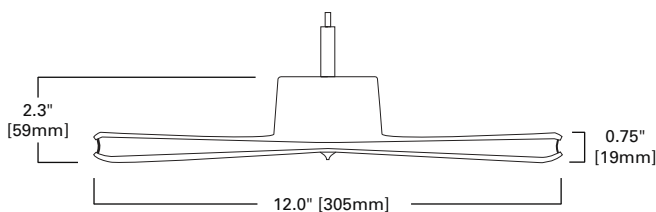
### Product Certification



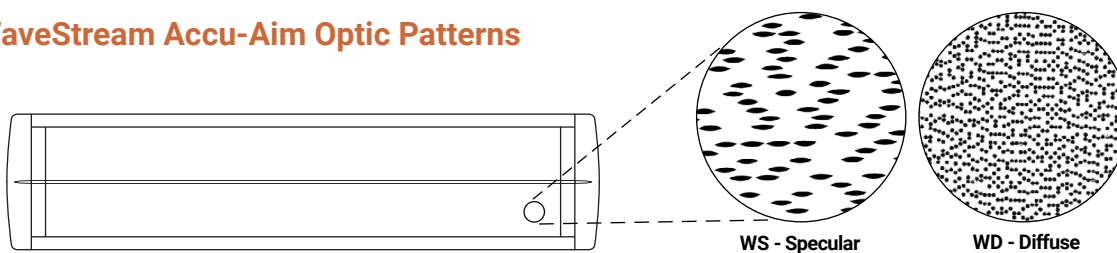
### Product Features



### Dimensions and Fixture Lengths



### WaveStream Accu-Aim Optic Patterns



## Order Information

SAMPLE ORDER NUMBER: **DSI-WS-40L835-1D-UNV-STD-WAA-DC-W-AC48-T1-16**

Domestic Preference	Series	Shielding	Lumen Package Nominal per 4' section	CRI	Color Temperature	Number of Circuits	Additional Circuiting	Input Voltage
<b>[Blank]</b> =Standard <b>BAA</b> =Buy American Act	<b>DSI</b> =Divide Suspended Direct / Indirect	<b>WS</b> =WaveStream Specular Optic <b>WD</b> =WaveStream Diffuse Optic	<b>20L</b> =2000 Lumens, (500 lms/ft) <b>30L</b> =3000 Lumens, (750 lms/ft) <b>40L</b> =4000 Lumens, (1,000 lms/ft) <b>50L</b> =5000 Lumens, (1,250 lms/ft) <b>60L</b> =6000 Lumens, (1,500 lms/ft)	<b>8</b> =80+CRI <b>9</b> =90+CRI	<b>30</b> =3000K <b>35</b> =3500K <b>40</b> =4000K <b>50</b> =5000K	<b>1</b> =Single Circuit	<b>D</b> =None (Default Dimming) <b>E</b> =Emergency Circuit <b>S</b> =Secondary Circuit <b>N</b> =Emergency + Secondary Circuit	<b>120</b> =120V <b>277</b> =277V <b>UNV</b> =Universal (120V-277V) <b>347</b> =347V
<b>Notes</b> Only product configurations with this designated prefix are built to be compliant with the Buy American Act of 1933 (BAA). Please refer to <a href="#">DOMESTIC PREFERENCES</a> website for more information. Components shipped separately may be separately analyzed under domestic preference requirements.			<b>Notes</b> Refer to performance table on Page 3 for more detail.	<b>Notes</b> Additional lead-time may apply for 930, 935 and 940 configurations.	<b>Notes</b> Refers to wiring in cross section.	<b>Notes</b> Secondary circuit not available with integrated sensor options.	<b>Notes</b> Integral 347V driver with STD 0-10V option only. Factory supplied 347V remote transformer for all other driver options.	

Driver / Dimming Options	Integral Sensor	Integral Emergency	Top Cover	Finish	Suspension Length	Ceiling Type	Run Length
<b>STD</b> =Standard 0-10V (1%-100%) <b>SR</b> =Sensor Ready (1%-100%) <b>5LT</b> =Fifth Light DALI (5%-100%) <b>5LTHD</b> =Fifth Light DALI (1%-100%) <b>LH</b> =Lutron HiLume 1% EcoSystems <b>L5</b> =Lutron 5-Series 5% EcoSystems	<b>WAA</b> =WaveLinx Wireless Integrated Sensor <b>WAB</b> =WaveLinx Lite Wireless Integrated Sensor <b>LWIPD1</b> =Enlighted Wireless Integrated Sensor	<b>EL14W</b> =14-watt, 120V-277V Emergency Battery Pack <b>EPC</b> =UL924 Bypass Relay	<b>DC</b> =Dust Cover <b>FC</b> =Frosted Cover <b>SC</b> =Solid Cover (100% Down) <b>(blank)</b> =No Cover	<b>W</b> =White <b>S</b> =Silver <b>B</b> =Black <b>CC</b> =Custom Color	<b>Adj. Cable</b> <b>AC48</b> =48" <b>AC120</b> =120" <b>AC240</b> =240" <b>AC300</b> =300" <b>AC360</b> =360"	<b>T1</b> =15/16" T-Bar <b>T9</b> =9/16" T-Bar <b>TS</b> =Slotted T-Bar <b>JB</b> =Junction Box /Structure <b>UM</b> =Universal Ceiling Kit (T1, T9, JB) <b>S</b> =Swivel at Cancopy (___=T1, T9, TS or JB)	<b>4</b> =4 ft <b>8</b> =8 ft <b>XX</b> =Specify Row Length
<b>Notes</b> LH and L5 driver options not available in 20L lumen package.	<b>Notes</b> WAA and WAB sensor must be used with "STD" driver. LWI sensor must be used with "SR" sensor ready driver. Integrated Sensors combined with Emergency Circuit require one UL924 Bypass Relay per emergency section. SWPD1 has been renamed to WAA, but remains the same sensor.	<b>Notes</b> EPC option used to bypass local control during outage. Must be used in conjunction with UL1008 device (provided by others).	<b>Notes</b> Refer to photometric IES file data for top cover performance.		<b>Notes</b> White mounting hardware standard; for black mounting hardware, add "-B" after ceiling type.	<b>Notes</b> Standard row configurations over 8' consist of 4' and 8' luminaires.	

## Product Specifications

### Construction

- Constructed from extruded aluminum housing
- 2-1/4" x 12" housing
- Die-formed 20 gauge cold rolled steel

### End Caps

- Precision engineered 2-piece die cast aluminum alloy
- Attach mechanically to the end of the fixture without exposed fasteners
- End cap adds 2-1/8" at each end

### Lengths

- Available in 4 ft and 8ft sections
- Modular design eliminates the need for starter, intermediate, and end of run sections

### Finish

- Electrostatically applied polyester powder coat paint
- White, Silver, or Black finish offered as standard
- RAL custom colors are available

### Mounting

- Aircraft cable mounts on 4'-0" and 8'-0" on centers
- Fixture is balanced to allow for minimal leveling
- All sections are continuously wired with push-in connectors for fast installation
- Fixtures can be joined for straight continuous runs using Quick-Tab alignment features
- Refer to installation instructions for various ceiling interface details

### Shielding / Optics

- Optical grade acrylic embedded with patented Accu-Aim™ micro-optics for optimal distribution, low glare, and high performance
- Specular (WS) or diffuse (WD) optical patterns are available to achieve the right look for any application
- Dust Cover (DC) option is a clear formed polycarbonate for worry free cleaning and protection
- Frosted Cover (FC) option is a frosted formed polycarbonate for worry free cleaning, reduced uplight, and protection
- Solid Cover (SC) option is a high reflectance white powder coat painted steel reflector for 100% downlight

### LED and Light Engine

- LED's are available in 3000K, 3500K, 4000K
- CRI options of either ≥80CRI or ≥90CRI
- Lumen output will be affected - please refer to the lumen adjustment factor tables
- TM21 life at 60,000 hours up to L87 and calculated L70 exceeds 256,000 hrs
- Drivers available in 120-277V and 347V

### Integrated Controls

- 0-10V dimming to 1% standard
- WaveLinx sensor compatible for IoT capability
- Enlighted sensor compatible for IoT capability
- WaveLinx Lite compatible for out-of-the-box functionality

### Emergency Options

- Optional 14-watt 120-277V emergency battery illuminates a 4 ft. down-light section
- 90-minute backup period for code compliance

- Test switch/indicator button located on the top side of the luminaire
- Patented EZ Key prevents accidental discharge of the battery during construction
- For approximate delivered lumens multiply the lumens per watt of the desired fixture by the wattage of the emergency battery pack (100 lm/W x 14 = 1400 lumens)
- The combination of integrated sensor and emergency circuit options require an EPC UL924 bypass relay that disables sensor control of emergency sections when normal power is lost
- UL 924 emergency/generator transfer options available

### Weight

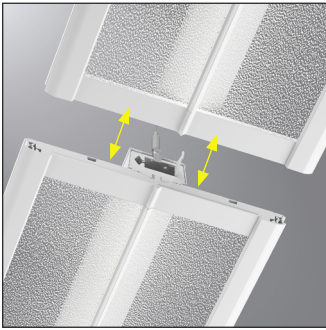
- 6.0 lbs. per foot

### Compliance

- cULus listed for damp locations, 25°C ambient environments
- RoHS compliant
- Tested to IESNA LM-79 and LM-80
- Stated life per TM21 standards
- Can be used for State of California Title 24 high efficacy luminaire
- DesignLights Consortium™ Qualified and classified for DLC Standard and DLC Premium, refer to [www.designlights.org](http://www.designlights.org) for details

### Warranty

- Five year warranty standard [www.cooperlighting.com/legal](http://www.cooperlighting.com/legal)

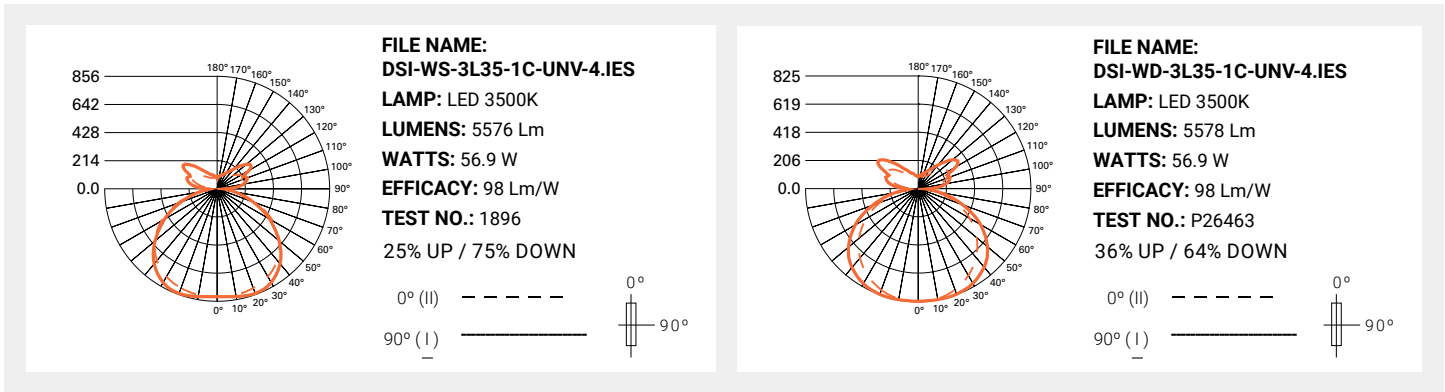


**Quick-Tab Alignment**

Corelite's patented quick-tab alignment system creates a seamless and simple installation every time. Simply align the tabs into the corresponding slots. The fixture can then hang freely while a single contractor makes the final connections; it all slides back together and is securely fastened in place.

**Photometric Data**

[View IES files](#)



Note: Refer to IES files for more product data.

**Energy and Performance Data**

Divide Suspended LED Light Level Outputs and Distribution (3500K, 80 CRI)								
Series	Lumen Package	Delivered Lumens		Wattage		Efficacy LPW	Distribution	
		4FT	Per FT	4FT	Per FT		% Up	% Down
DSI-WS	20L	2069	517	15.2	3.8	136	27%	73%
	30L	3000	750	22.4	5.6	134		
	40L	3995	999	29.9	7.5	134		
	50L	5039	1260	37.8	9.5	133		
	60L	5968	1492	46.7	11.7	128		
DSI-WD	20L	2123	531	15.2	3.8	140	29%	71%
	30L	3079	770	22.4	5.6	137		
	40L	4100	1025	29.9	7.5	137		
	50L	5172	1293	37.8	9.5	137		
	60L	6125	1531	46.7	11.7	131		

**Lumen Adjustment Factors**

CCT	80 CRI	90 CRI
3000K	0.955	0.830
3500K	1.000	0.861
4000K	1.012	0.883

**Example Calculation:**

WS / 40L / 3500K / 80 CRI  
Lumen Output selected = 999 lms/ft

**3500K / 90 CRI Desired**

Lumen Adjustment Factor = 0.861  
Adjusted Lumen Output = 999 lms/ft x 0.861 = 860 lms/ft

**Color Data (3500K)**

		80CRI
TM-30-15	R <sub>f</sub>	82.3
	R <sub>g</sub>	94.4
CRI/CIE	R <sub>a</sub>	84.0
	R <sub>9</sub>	17.2

**Lumen Maintenance**

Ambient Temperature	TM-21 Lumen Maintenance (60,000 hours)	Theoretical L70 (Hours)
25°C	>87%	256,000

**Control Systems**

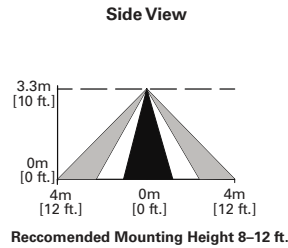
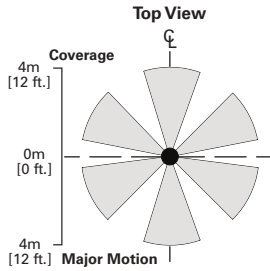
- WaveLinx Wireless
- WaveLinx Wired
- WaveLinx Lite
- Enlighted
- iLumin Plus
- VividTune



**Connected Systems**  
[CLICK HERE](#)

The Divide with Integrated Sensor technology provides automatic energy savings without sacrificing performance. The Divide delivers superior lighting with integrated occupancy and daylighting controls. For standalone and controlled applications, the WaveLinx Lite integral sensor provides out-of-the-box functionality with no gateways required and factory startup is not needed. When more connectivity is required, the WaveLinx Wireless sensor meets modern code and utility requirements, delivers energy and cost savings, while enabling buildings to become smart buildings. The WaveLinx Wireless Connected Lighting System combined with Trellix provides an open IoT platform and infrastructure that connects intelligent sensors leveraging the real-estate of the physical light fixture to solve higher complexity problems to deliver actionable insights through the aggregation of valuable data.

For additional information integrated sensors and connected lighting, please visit [Cooper Lighting Solutions' Connected Lighting Website](#).



**Sensor Integration**

Integrated sensors are located in the middle of each 8' section and on the end of 4' sections for individual and continuous runs. Each section can be individually controlled or grouped together with the integrated sensors.

**Systems comparison chart**

Cooper Lighting Solutions provides many lighting system solutions designed to satisfy code requirements and meet the unique needs of any project.



**Standalone**



**Controlled**  
WaveLinx Lite



**Connected**  
WaveLinx Wireless



**Enterprise**  
Trellix

	Standalone	Controlled WaveLinx Lite	Connected WaveLinx Wireless	Enterprise Trellix
<b>Occupancy</b>	Yes	Yes	Yes	Yes
<b>Daylighting</b>	Yes	Yes	Yes	Yes
<b>Gateways</b>	-	-	1 WAC	300 WACs
<b>Devices</b>	-	50 per Area (1400 per site)	150 per WAC	45,000 per Core Enterprise
<b>Software</b>	-	WaveLinx Lite Mobile App	WaveLinx Mobile App	Trellix Core
<b>Areas</b>	-	28 per Site	16 per WAC	up to 4,800
<b>Zones</b>	-	16 per Area	16 per Area	up to 76,800
<b>Scheduling</b>	-	-	Local	Global
<b>VividTune™</b>	-	-	Yes	Yes
<b>Plug-Load Control</b>	-	-	Yes	Yes
<b>Integration</b>	-	-	-	BACnet, API
<b>Dashboards</b>	-	-	-	Energy, Occupancy
<b>Configuration</b>	-	Installer	Technician	Technician / IT

**SCALABILITY**

