

REPORT NO. 104110277CRT-001

**RETURN AIR VOLUME
VERSUS STATIC PRESSURE TESTS
ON CORELITE CLASS RX/ZX
RETURN AIR LIGHT FIXTURES**

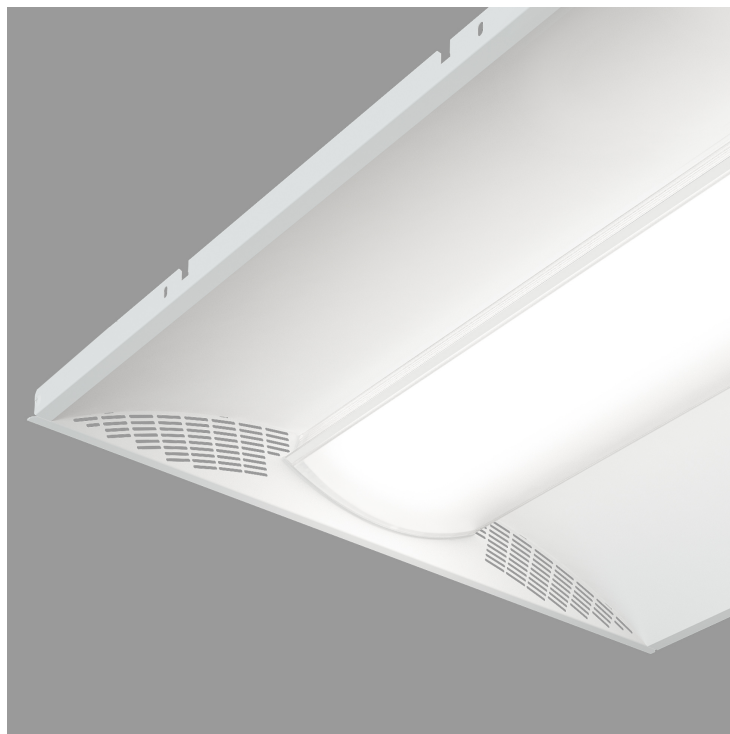
**COOPER LIGHTING LLC
18001 E COLFAX AVE
AURORA, CO 80011-5108**

TEST METHOD

The fixtures were tested in accordance with the ASHRAE 70-2006 Standard “Method of Testing for Rating the Performance of Air Outlets and Inlets”, which incorporates ADC 1062: GRD-84 Test Code for Grilles, Registers and Diffusers. The unit was installed in the facility and supplied with measured volumes of air.

DESCRIPTION OF TEST SPECIMENS

The test specimens consisted of a Model RX/ZX LED 2x2 and a Model RX/ZX LED 2x4 Return Air Fixtures. Air return openings were located along two opposite sides of each fixture.



MODEL CORELITE CLASS RX/ZX AIR RETURN 2x2/2x4

RESULTS OF MEASUREMENTS

RX/ZX LED 2x2		RX/ZX LED 2x4	
Negative Static Pressure (inches H2O)	Return Air Volume (CFM)	Negative Static Pressure (inches H2O)	Return Air Volume (CFM)
0.05	79	0.05	75
0.10	112	0.10	103
0.20	161	0.20	153
0.25	177	0.25	177
0.30	198	0.30	191
0.45	239	0.45	234

