



Long-Term Care Solutions

Human-centered for better care experiences.



Lighting for better long-term care experiences. Technology for a brighter future.

Planning long-term care spaces means blending the art and science of design, balancing aesthetic and sensory needs, while staying on budget and code compliant with long-term care and building codes.

Satisfying both residents and the bottom line requires unlocking the transformative capabilities and insights of a smart spaces platform. We can help you navigate complex challenges with confidence – both today and tomorrow.



It's time to think about long-term care in a whole new light.



Challenges	4	Lighting by Space	20
Trends	5	Resident Rooms	21
Beyond Lighting	6-7	Lobby Areas	22
Technology	8	Visiting & Waiting Areas	23
Healthcare Lighting: ArcMed	10	Hallway Areas	24
Color Tuning: VividTune	11	Dining & Kitchen Areas	25
UV-C Sanitation: Fail-Safe	12	Activity Areas	26
Augmented Reality: Light ARchitect	13	Service Areas	27
Connected System: WaveLinx	14	Nurse Areas	28
Smart Spaces Platform: WaveLinx	15-17	Physical Therapy Spaces	29
Case Study	18-19	Exit & Emergency Areas	30
		Sunroom Areas	31
		Resident Drop-Off & Walkways	32
		Outdoor Gardens & Courtyards	33
		Parking Areas	34
		About Us	35



In step with the **challenges** facing long-term care

Cooper Lighting Solutions understands the complex needs of your industry.

Resident health and well-being

The quality of care varies greatly from one long-term care facility to another. Our most vulnerable citizens don't always get the level of care they deserve.

- Lack of clearly defined outcomes and benchmarks
- Poor sharing of best practices
- Gaps in Medicaid safety net not yet addressed

Financing the cost of care

As the number of seniors increases and the number of younger adults decreases, the resulting tax shift will require new strategies for financing long-term care.

- Increased pressure on Medicaid
- Debate between what government covers vs. individual responsibility

The aging population

Our population is aging and the number of additional people expected to need long-term care is considerable.

- 70% of people over 65 are expected to require some type of long-term care in their lifetimes (<https://acl.gov/ltc/basic-needs/how-much-care-will-you-need>)
- Longer life expectancies, smaller family sizes, and higher rates of divorce reduce the amount of informal care available from family and friends

Staffing shortages in the healthcare workforce

The demand for qualified, trained, long-term care professionals is expected to exceed the supply. Severe shortages of 30% or more are expected.

- Traditionally lower pay than acute healthcare facilities is part of the problem
- Job satisfaction and employee retention are low due to low pay, stressful conditions, lack of benefits, minimal job security, etc.



Ahead of tomorrow's trends

Even before the disruption of the pandemic, facilities were facing a changing world that included an aging population and more privately insured residents.

Focus on resident-centered care

To optimize resident experiences and gain a competitive edge, providers increasingly focus on facility comfort, hospitality, and holistic resident care.

Growing number of adults aged 65+

The elderly will make up an increasingly larger share of the population, which adds pressure to long-term care facilities.

Increased IoT spend

As facilities look to eliminate bottlenecks, losses, and inefficiencies while optimizing sanitation procedures, CAGR spending is projected to grow 20% by 2025.



Beyond Lighting: solutions to meet the moment

Lighting plays an outsized role in resident satisfaction, staff productivity, and overall well-being. From security to infection control and process improvement, our connected lighting solutions promote smarter, healthier facilities in every sense.

HOSPITABLE ■ HYGIENIC ■ HOLISTIC





Multi-tasking connected lighting solutions for a healthier well-being.

Hospitable

Create welcoming environments from the parking lot to the resident room.

- Color Tuning: VividTune
- Healthcare Lighting: ArcMed
- Augmented Reality: Light ARchitect

Hygienic

Discover new ways to protect residents and occupants.

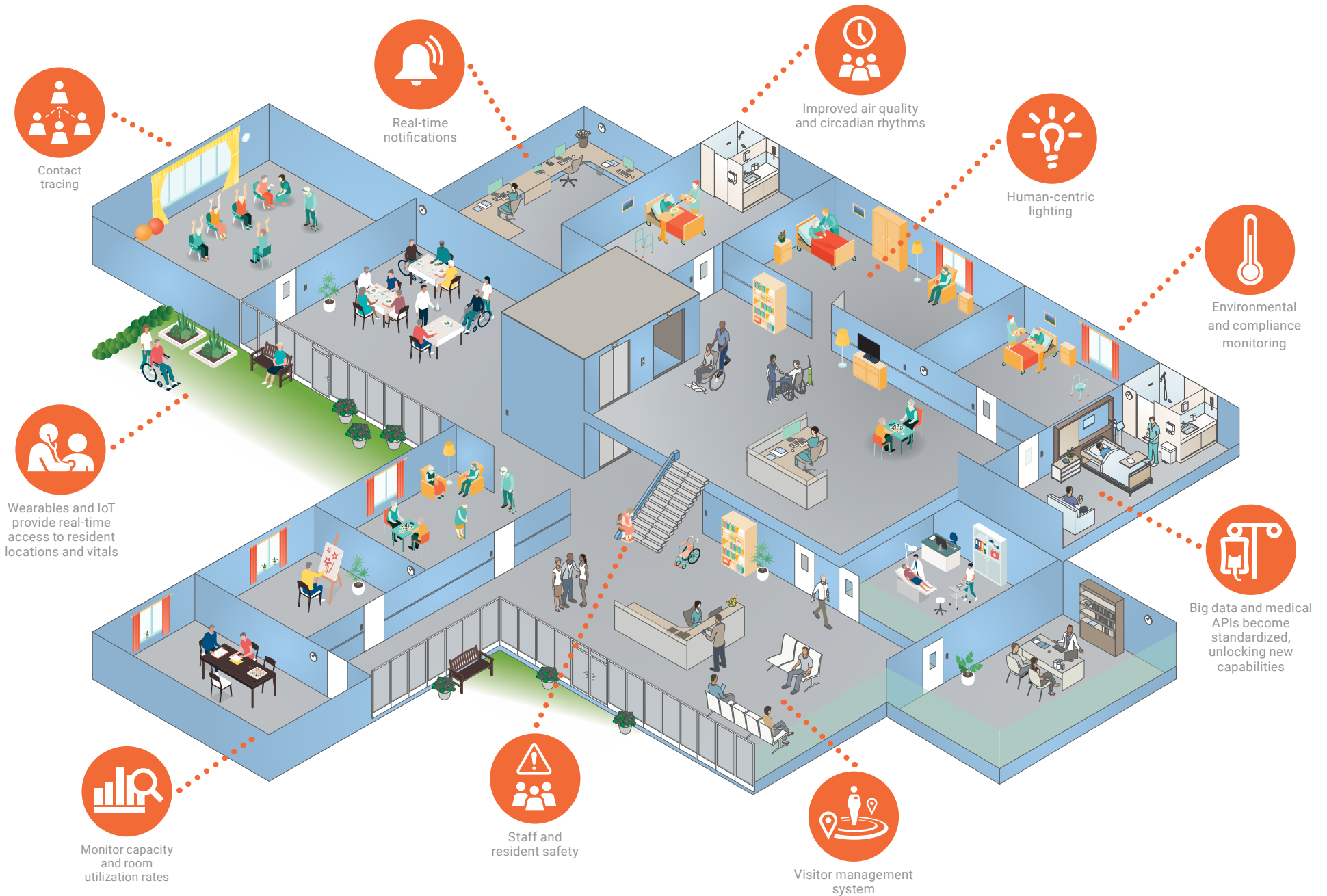
- UV-C Upper Air and Surface Sanitation Solutions: Fail-Safe and Neo-Ray
- Contact Tracing: WaveLinX Locate app
- Connected System: WaveLinX

Holistic

Springboard improvements to processes and workflows.

- Smart Spaces Platform: WaveLinX
- Color Tuning: VividTune
- Real-Time Location System: WaveLinX Locate

Today's connected long-term care facilities





Cooper Lighting Solutions offers
state-of-the-art technology
to meet the needs of long-term care
facilities today and tomorrow

ArcMED lighting

Architectural Lighting for the modern healthcare facility

The ArcMED product portfolio by Fail-Safe combines the architectural aesthetics desired in modern long-term care facilities.

These products provide high performance, and a simple, clean, and elegant appearance that enhances the visual experience of residents in a facility, making it the preferred lighting choice for long-term care spaces.

Fail-Safe: your complete performance family of luminaires

Our luminaires, with industry ratings and certifications, meet the most stringent application requirements.



Color Tuning solutions

Discover the Power of Preference

Lighting affects mood and alertness, and can even promote healing and well-being. Easy to install and even easier to use, VividTune allows residents and staff to easily adjust color temperature and intensity according to the mood, scenario, or task at hand. VividTune is easy to install, too.

VividTune uses a simple two-channel system, where one channel adjusts the color temperature from warm to cool, and the other controls the intensity of the light. Facilities can choose from a range of control solutions, from a simple 0-10V slide dimmer to more advanced connected lighting capabilities with WaveLinX.



color temperature



Change the color temperature of the space throughout the day to align more closely with residents' circadian rhythms, from cooler light in the morning and afternoon to warmer light in the evening.



light intensity



Control the intensity of lighting to suit residents' comfort levels and staffs' tasks at hand.

Tunable White Solutions in Long-Term Care

With VividTune, you can positively alter the entire atmosphere and mood of a space, from resident rooms to nurses' stations and other living areas.



**VividTune**[™]
color tuning solutions

Upper Air & Surface UV-C sanitation

Quick, Continuous, Occupant-Safe Sanitation

UV-C upper air technology is safe to use in occupied spaces and runs continuously, quietly, and independently from your HVAC system. It's tested and proven to inactivate harmful pathogens in seconds, and is even CDC-recommended as part of a layered strategy to reduce SARS-CoV-2 transmission in certain settings.

Designed with Safety in Mind

Fail-Safe's UV-C Air sanitation solutions distribute UV-C in the upper air, preventing direct human exposure to UV-C. The result is fresh air that's constantly cleaned and recirculated, similar to the tried and true method of opening the windows.




Save Time and Money

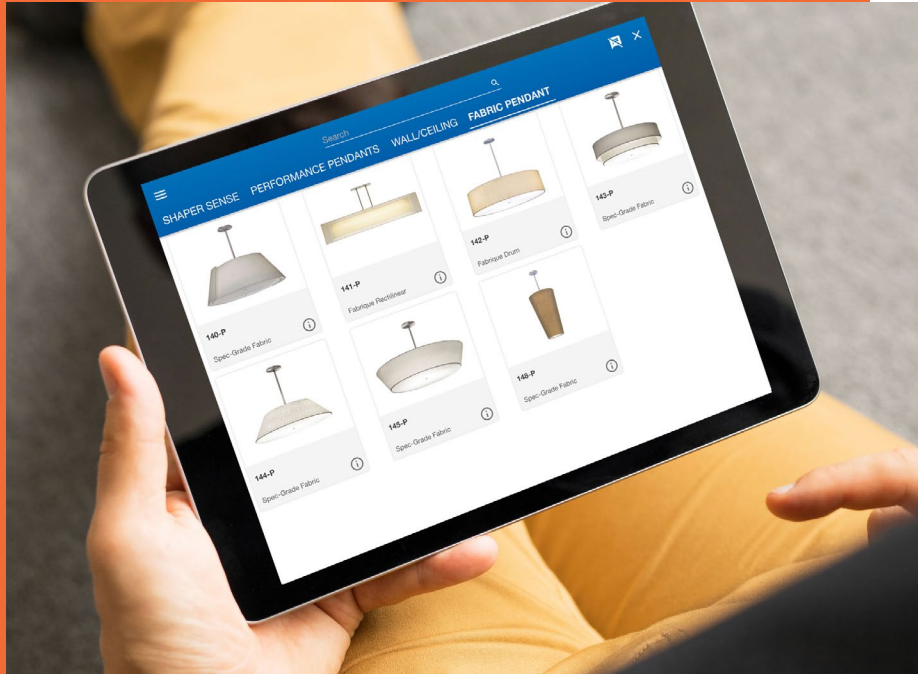
Because no control systems are required to operate Fail-Safe's UV-C Upper-Air Sanitation products and installation is simple, installation costs are low. Plus, since there's no additional demand on the HVAC system, they're less expensive to use than other "filter" solutions.



Recommended Products

[Click on products to learn more](#)

LIGHTING			
	Fail-Safe GAW	Fail-Safe GAC	Neo-Ray Define UV-C
	<ul style="list-style-type: none"> • Germicidal UV Air Wall Mount • Air sanitation fixture with UL 1598 listing • Provides air sanitation for large areas of coverage • Horizontal distribution keeps UV-C in the upper air • Can be used in occupied spaces 	<ul style="list-style-type: none"> • Germicidal UV Air Ceiling Mount • Air sanitation fixture with UL 1598 listing • Symmetrical coverage area • Horizontal distribution keeps UV-C in upper air • Can be used in occupied spaces 	<ul style="list-style-type: none"> • Direct LED + Indirect UV-C enabled • Suspended and wall mount family in 5" housing sizes • Upper Air UV-C enabled, safe operation while space is occupied • UV-C and ambient LED light are controlled separately • 2700K, 3000K, 3500K, 4000K, and 5000K correlated color temperatures available

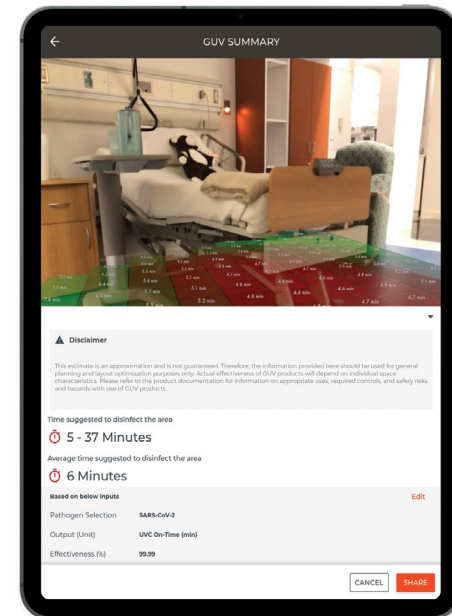
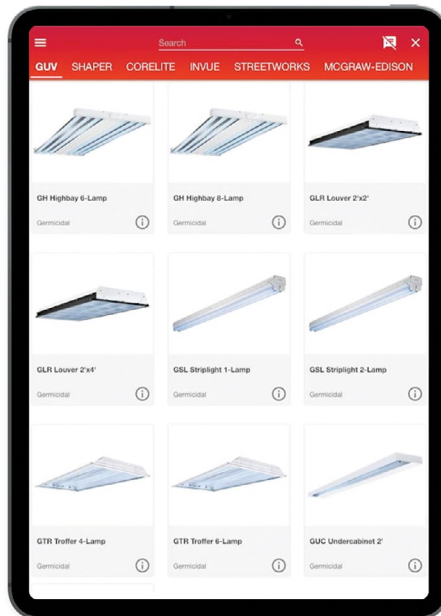
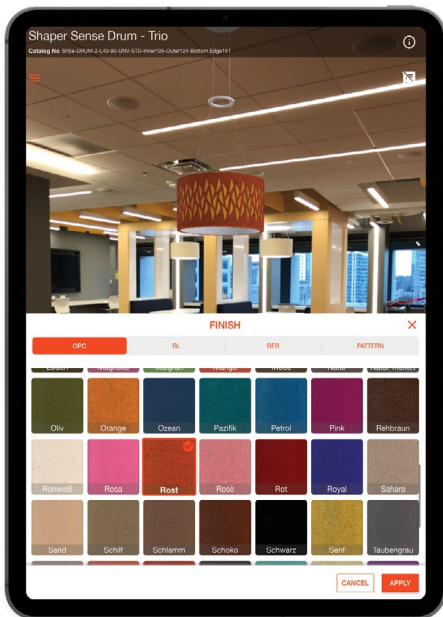
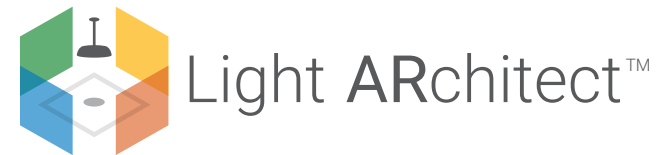


Light ARchitect App

Visualize your new lighting solution with augmented reality

We've got an app that lets us show you what different fixtures would look like in any space in your facility, from resident rooms and nurses' stations to parking lots and walkways.

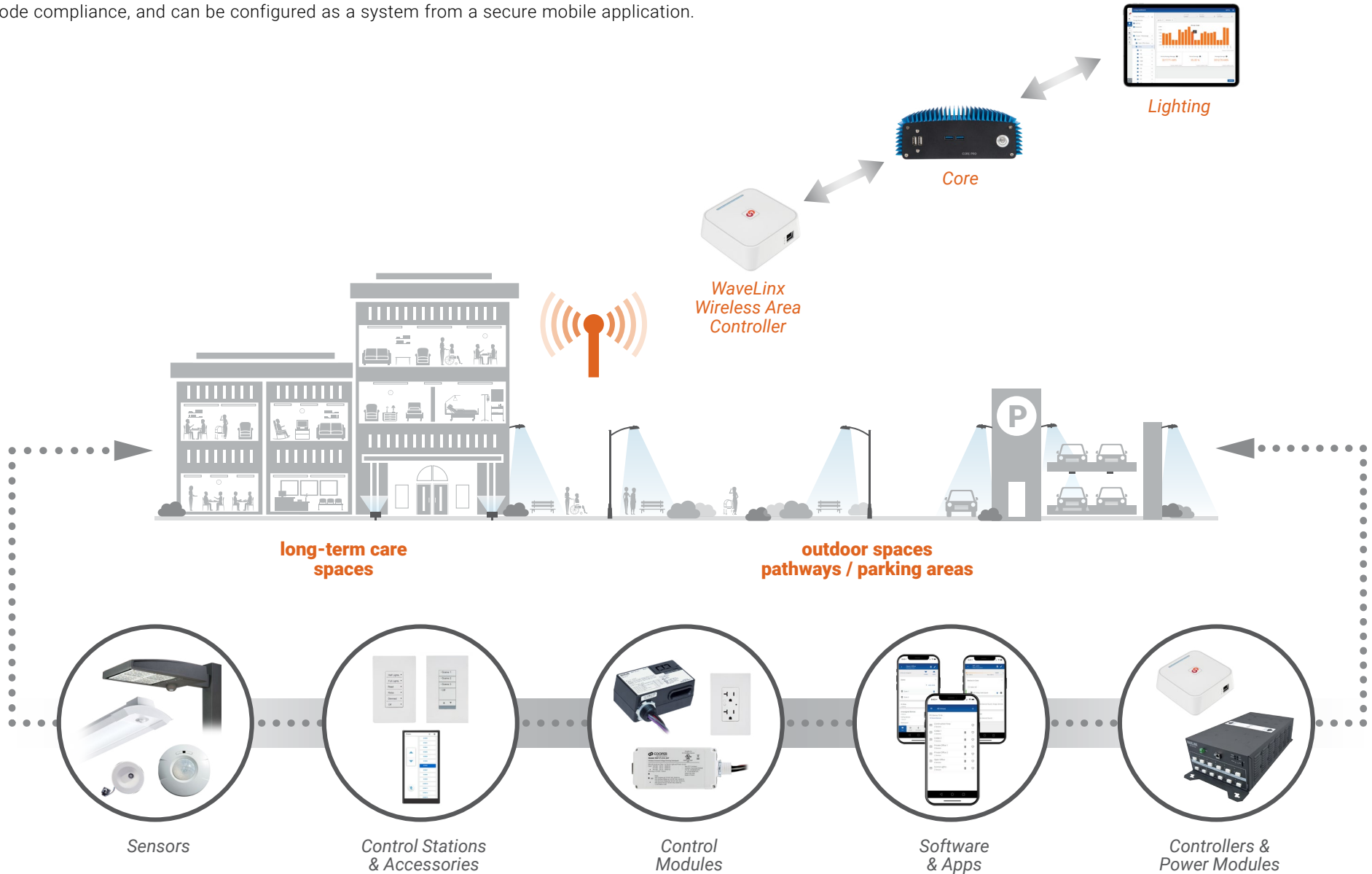
Our proprietary Light ARchitect app lets us take a photo of the space that needs better lighting; then we superimpose a lighting design over it so you can visualize what the final result will look like. Best of all, our app lets us do this on the spot, in about 10 minutes.

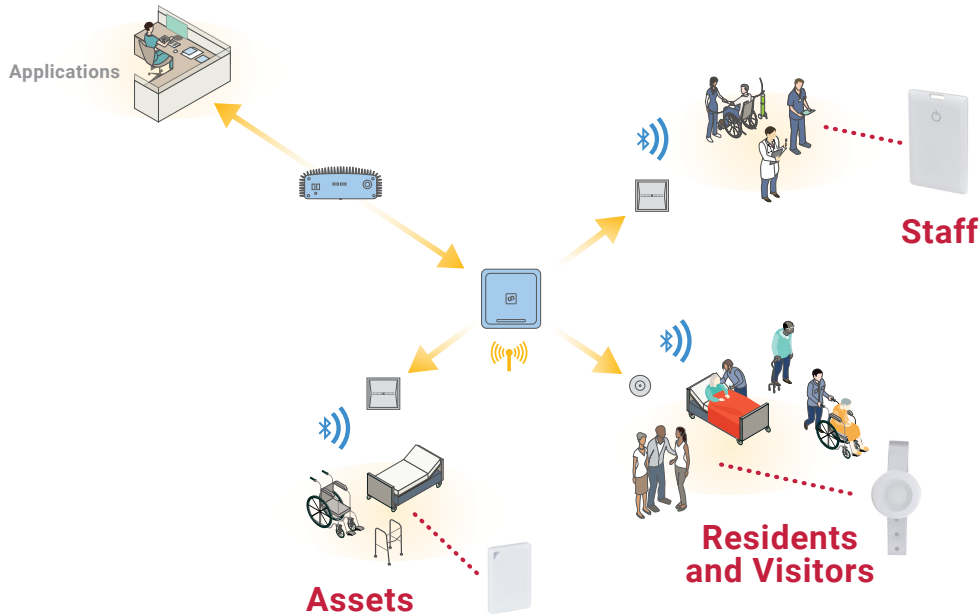


WaveLinx connected system

One scalable, easy-to-install system to rule them all

No building infrastructure is better positioned to collect valuable data than your lighting system. With its integrated sensors, WaveLinx provides immediate out-of-the-box performance and code compliance, and can be configured as a system from a secure mobile application.





Smart spaces platform and apps

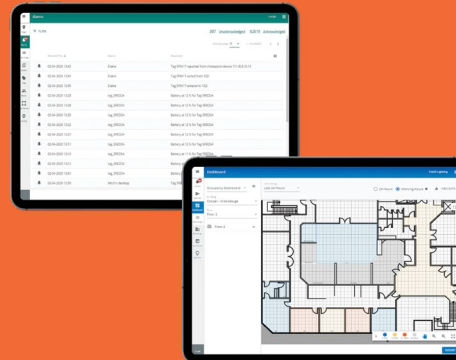
Analyze facility data in real time, then put it to work with a suite of healthcare-minded applications that improve efficiency, enhance occupant experience, and promote well-being.

Valuable real-time facility data and ready-to-use smart spaces platform tools are at your fingertips.



Sensing and Locating

WaveLinx is optimally positioned to collect facility data.



Open Integration Smart Spaces Platform

Leveraging BACnet and APIs (REST), Cooper Lighting Solutions empowers you to put your data to work.

OPTIMIZED facilities



- Increased productivity
- Improved safety & security
- Better asset utilization
- Data-informed business decisions
- Maintenance and operational savings
- Real-time device status



WaveLinx: the smart spaces lighting platform for **better, data-driven decisions**

By harnessing the tremendous potential of Real-Time Location Systems (RTLS), WaveLinx can help facilities collect reliable data and turn it into meaningful, real-time insights that lead to operational and care-giving success.



Faster Staff Response

WaveLinx integrates with your nurse call system.

- Eliminates manually canceled routine calls
- Makes it easier for staff members to find each other
- Reports how quickly caregivers respond to calls and how much time they're spending with residents



Better Position During Staffing Shortages

As more and more people need long-term care, competition for skilled caregivers increases. WaveLinx provides important advantages.

- Modernizing your facility
- Allowing you to provide more efficient care
- Offering the ability to do more with less



Better Asset Management

Save time and money when WaveLinx can show you exactly where your equipment is.

- Finding what you need in real time
- Alerting you when equipment maintenance is needed to stay within warranty
- Helping you find a caregiver pronto

Decreased Lost or Stolen Items

WaveLinx can help staff determine whether a resident's item was misplaced or taken by someone who was where they weren't supposed to be.

- Retracing a resident's movements
- Showing who's entered a room or area
- Alerting staff when someone is entering a restricted area

Increased Resident Activity

How do you gauge residents' activity level or know they're getting enough exercise? WaveLinx has answers.

- Displaying where each resident is in real time
- Providing alerts when residents aren't as active as they should be
- Reporting when their activity slows over time

Reduced Waste

WaveLinx can monitor temperature and humidity, notifying staff of any changes to help avoid costly spoilage of everything from medicines to food.

- Producing historical temperature reports
- Eliminating the need for manual temperature logging
- Reminding staff of expiration dates

Fewer Patient Altercations

Some dementia residents get agitated and act out. Medication may not be the answer. WaveLinx helps you provide more attentive care that is often required for residents with dementia.

- Enabling real-time alerts for when a resident is in proximity to other residents they typically don't get along with
- Providing caregivers with the ability to reduce altercations

Improved Infection Prevention

WaveLinx helps reduce infections – especially important for those whose health is already compromised.

- Monitoring rooms for appropriate humidity and temperature levels
- Providing reliable contact tracing during an outbreak
- Making prompt quarantine measures possible

Fewer Resident Falls

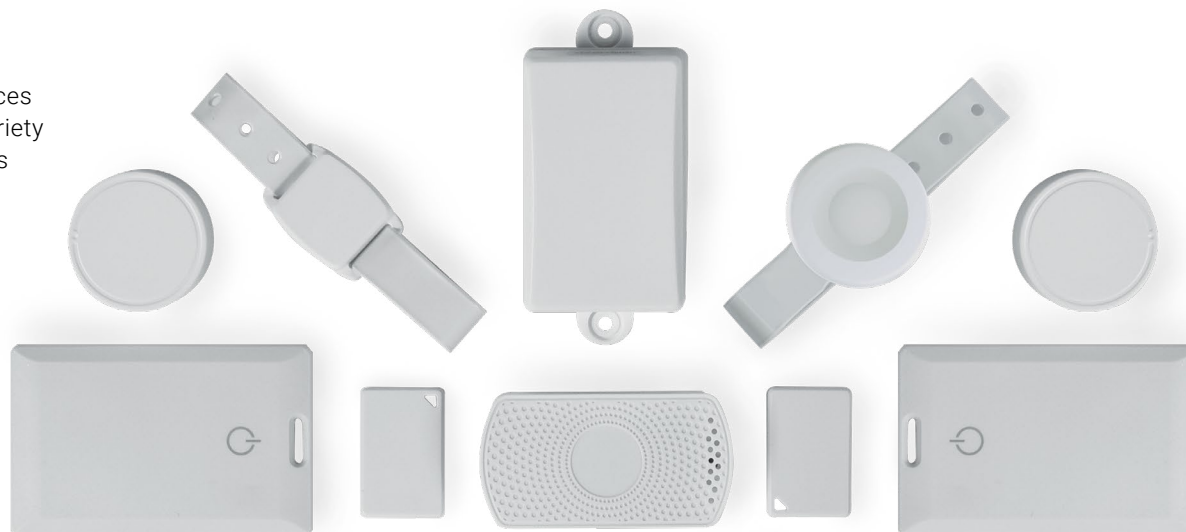
The leading cause of injury-related death in seniors? Falls. Many occur at night as residents go to and from the bathroom. WaveLinx offers solutions that work.

- Alerting caregivers when a resident enters the bathroom
- Protecting residents' night vision by dimming the lighting in the evening
- Changing the lighting color temperature; tunable lighting was found to reduce resident falls by 40%

RTL Tags:

The WaveLinx Smart Spaces Platform offers a wide variety of physical tags as well as a virtual tag for mobile devices. The platform is also compatible with select 3rd-party tags.

Click on products to learn more





Case Study: Missouri Slope, Bismark, ND

A long-term care facility plans to improve operations and occupant experiences with Cooper Lighting Solutions.



- Resident Safety
- Asset Management
- Staff Response
- Cybersecurity



"Our advanced lighting system is the next step in the evolution of modern healthcare delivery. It's the backbone of several integrations already in play, including Real-Time Location System and motion sensing, to alert caregivers to potential patient/resident needs. Ultimately, the new lighting system significantly increases our ability to analyze operations and to improve quality and safety for all who live and work at Missouri Slope."

Reier Thompson, MBA, LNHA, HSE
President/CEO of Missouri Slope

Products Used

- WaveLinx Smart Spaces Core - hardware platform hosting and licensing
- WaveLinx Lighting app
- WaveLinx Locate app (RTLS)
- WaveLinx Locate (RTLS) wearables, badges, and tags accessories.
- **128** WaveLinx Area Controllers
- **64** WaveLinx Switchpacks/Load controllers
- **81** WaveLinx/Greengate Occupancy sensors
- **876** WaveLinx Wallstations/Dimmers
- **37** HALO Track
- **49** Neo-Ray Linear Recessed
- **168** HALO Surface-Mount Downlights 2,389 Metalux troffers, flat panels, strip lighting, vapor tights, and other specialty lighting
- **6** Sure-Lite Exit
- **22** Prevail Area/Site
- **27** Galleon Wall Mounted 230 All-Pro lighting

Background

Like most long-term care facilities, Missouri Slope Lutheran Care Center in Bismarck, North Dakota, faced steep challenges. An aging population and increased demand for care created a need to scale services while dealing with increasing staffing shortages and rising healthcare costs – all while being pressured to raise the quality of care and the overall experience for residents.

Challenge

With its existing facility at full capacity, Missouri Slope identified the need for additional private rooms, improved parking, and additional staff services. In 2017, Missouri Slope broke ground on a new, state-of-the-art facility with 192 resident rooms, chapel, sunroom, entertainment center, beauty salon, on-site pharmacy, memory care unit, and childcare center. Cooper Lighting Solutions joined the project in 2021.

Solution

The facility's new lighting system needed to provide immediate ROI and future scalability. The Cooper Lighting Solutions Smart Spaces Platform fit the bill. Combining high-quality ambient lighting with advanced integrated sensing capabilities, such as daylight, power, occupancy, and RTLS (Real-Time Location System), the lighting system was able to displace the disparate systems of the past with greater value at a lower acquisition and ongoing operational cost.

Results

The Missouri Slope staff will leverage its lighting systems to improve staff and resident experiences in several ways:

Resident activity: Staying active is key to long-term residents' health. Using RTLS, the staff can access residents' activity patterns and help them achieve optimal levels.

Memory care: RTLS will be used to ensure memory care residents are not entering unauthorized locations. If a resident wanders, staff receives automated alerts.

Nighttime safety: With WaveLinX and Cooper Lighting Solutions products, Missouri Slope can monitor certain resident activity – like using the restroom at night – even if they're not wearing their BLE-enabled device. This helps staff quickly and easily know where residents are and prevent incidents such as falls.

Staff and resident assist: Badges and wearables are equipped with an alert button that residents can use to request assistance. If no one responds within a set period, the request is escalated automatically.

Asset management: Assets, such as equipment and resident belongings, can be tagged and quickly located from any mobile or web-enabled device.

Identifying equipment in the laundry room: Smaller equipment sometimes becomes wrapped up in linens that are then processed in the laundry. Tagged equipment can be sensed to prevent it from being laundered.



National Recognition: Missouri Slope was one of the 2023 Integrated Lighting Campaign organizations recognized by the Department of Energy for exemplary performance in the application of advanced sensors and controls in lighting and the integration of lighting with other building and business systems.

"Cooper Lighting Solutions' Smart Spaces Platform integrates seamlessly with the West-Com Nurse Call platform to offer Missouri Slope caregivers and residents an even better way to communicate. In addition, this technology further enhances a facility's falls management program, which is top of mind for many healthcare facilities."

Theresa O'Hollaren
Chief Experience Officer/Chief Nursing Officer, West-Com

"The advanced design of JNL Technologies' Quantum door control system that incorporates Bluetooth for wander management dovetails well with Cooper Lighting Solutions' Smart Spaces Platform. The combined offering provides Missouri Slope greater value for their investment and delivers enhanced safety for their residents."

James Gleason
President/Founder, JNL Technologies

"ZulaFly has been a longtime RTLS partner of Missouri Slope, providing real-time locating, alerting, and analytics within our dashboards. Cooper Lighting Solutions' Smart Spaces Platform allows us to provide Missouri Slope with additional RTLS functionality."

Stephanie Andersen
CEO, ZulaFly



Lighting for a brighter tomorrow: Our solutions futureproof your facility

From lobbies, to hallways, to the resident rooms, Cooper Lighting Solutions has the lighting products to meet the individual needs of the widely varied spaces in a long-term care facility.

Click on key areas to learn more



Key Areas

Resident Rooms

Lobby Areas

Visiting & Waiting Areas

Hallway Areas

Dining Areas

Activity Areas

Service Areas

Nurse Areas

Physical Therapy Spaces

Exit & Emergency Areas

Sunroom Areas

Resident Drop-Off & Walkway Areas

Outdoor Gardens & Courtyard Areas

Parking Areas

Resident Rooms

Space Overview

Residents typically spend a lot of time in these rooms so it's important to provide a variety of types of lighting, including reading and night lights as well as bright examination lights. Creating an aesthetically pleasing design and ensuring visual comfort are also critical to maintaining resident satisfaction.

Design Features

Fixtures

- Multifunction resident bed light located above the resident bed
- Ambient lighting located in perimeter of room
- Accent lighting provides decorative touches

Light Quality

- Multiple light levels required at the resident's bed for different functions (ambient/examination/reading)
- Tunable Color Temperature 2700K-6500K (VividTune)







Solutions

- Low voltage control for nurse call systems
- VividTune
- Wavelinx



Recommended Products

Click on products to learn more

LIGHTING	 <p>Metalux Perceive</p> <ul style="list-style-type: none"> • Uses patent pending Perceive™ Technology based on cognitive science • Efficacy up to 137 lumens per watt • 80CRI and 90CRI options in 3000K, 3500K, 4000K, 5000K CCT • Available in 2x2, 2x4, and 1x4 sizes 	 <p>Portfolio LD4</p> <ul style="list-style-type: none"> • LED 4" Round Recessed Downlight or lensed wall wash • W2N Tunable White 2700K-6500K or 2000K-5000K • Lumens: 1,000-6,000; 0-10V dimming down to 1% • WaveLinx and DLVP connected lighting systems compatibility 	 <p>iO CoviO Graze</p> <ul style="list-style-type: none"> • Architectural Wall Graze / Wash Linear • 9 optical distributions available • Creates important accent layer to enhance visual experience • Indoor and outdoor rating allows for use in any environment 	TECHNOLOGY & CONTROLS SOLUTIONS	 <p>Greengate Patient Pillow Speaker</p> <ul style="list-style-type: none"> • Provides residents access to control lighting from the bed • Lighting/shade control buttons with Nurse Call, TV, and other features • Sealed to reduce risk of infectious fluids or solids entering device 	 <p>WaveLinx Locate Tags</p> <ul style="list-style-type: none"> • Ideal for asset management, resident elopement, workflows, staff duress, and infection prevention • Multiple form factors • Long battery life 	 <p>WaveLinx Sensor Options</p> <ul style="list-style-type: none"> • Lighting control • RTLS • Motion-based alerting • Occupant counting • Environmental monitoring

Lobby Areas

Space Overview

As one of the first places encountered upon entering a facility, this space sets the tone for a facility. Presenting a calm, welcoming, and clean ambiance is critical. Combining the architectural styles of Cooper Lighting Solutions fixtures with dim-to-warm and white tuning technologies allows a facility to create a pleasant environment that puts visitors at ease.

Design Features

Fixtures

- Downlights, cylinders, adjustable, track, multi-head, linear, acoustic, troffer, and decorative
- Variety of shapes, sizes, textures, and colors to complement any design

Light Quality

- Precision optics maximize uniformity
- Multiple color temperature and lumen options

Solutions

- WaveLinx
- DLVP
- D2W
- VividTune



Recommended Products

Click on products to learn more

LIGHTING



Portfolio LER4 / LESQ4

- LED 4" Round and Square Cylinder
- W2N Tunable White 2700K-6500K or 2000K-5000K
- Lumens: 1,000-4,000; Standard 0-10V dimming down to 1%
- WaveLinx and DLVP connected lighting systems compatibility



Portfolio LDSQ4

- LED 4" Square Recessed Downlight or lensed wall wash
- W2N Tunable White 2700K-6500K or 2000K-5000K
- Lumens: 250-7,500 lumens; 0-10V dimming down to 1%
- WaveLinx and DLVP connected lighting systems compatibility



HALO Commercial HC6

- Distributions: Precision-formed reflectors in Narrow, Medium, and Wide
- Wall wash distribution with exclusive rotatable linear spread lens
- Lumens: 500 - 6,000
- Universal Voltage 120V - 277V; 0-10V analog dimming down to 1%

TECHNOLOGY & CONTROLS SOLUTIONS



VividTune Technology

- Tunable white solutions from warm to cool white
- Achieve the right color temperature and light intensity
- Balance circadian rhythms as well as provide the best lighting for improved resident experience



WaveLinx Locate Tags

- Ideal for asset management, resident elopement, workflows, staff duress, and infection prevention
- Multiple form factors
- Long battery life



WaveLinx Sensor Options

- Lighting control
- RTLS
- Motion-based alerting
- Occupant counting
- Environmental monitoring

Visiting / Waiting Areas

Space Overview

For a peaceful, seamless guest experience, lighting in this area should complement the resident room design. Cooper Lighting Solutions offers a variety of recessed and suspended products to create uniquely lit spaces that enhances your facility.

Design Features

Fixtures

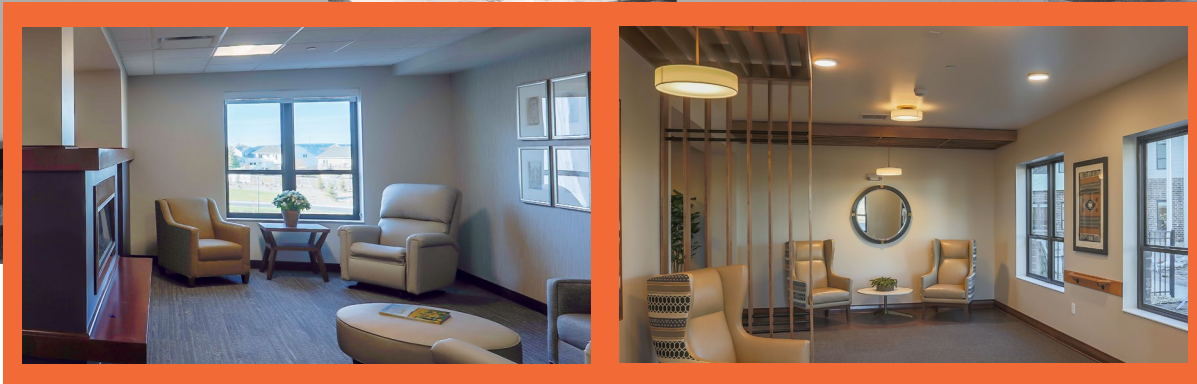
- Downlights, cylinders, adjustable, track, multi-head, linear, acoustic, troffer, and decorative
- Variety of shapes, sizes, textures, and colors to complement any design

Light Quality

- Recommended 80 or 90 CRI
- Multiple color temperature and lumen options

Solutions

- WaveLinX
- DLVP
- D2W
- VividTune



Recommended Products

Click on products to learn more

LIGHTING



Neo-Ray Define & UV-C

- Gain precision and flexibility with 2", 3", 4", and 5" widths, specifiable to the nearest inch
- Removable flush or drop satin lens design allows staff to easily clean and wipe down
- Precision trims accommodate a variety of ceiling types
- Upper Air UV-C option available



Portfolio LDA3 LED

- Distributions: 10° - 70° in 5° increments
- Lockable 365° rotation and 45° tilt holds any aiming position
- Downlight, accent, and pinhole reflectors
- WaveLinX and DLVP connected lighting systems compatibility



Portfolio LD4

- New construction downlight for shallow plenum space
- W2N Tunable White 2700K-6500K or 2000K-5000K
- Lumens: 1,000-3,000; 0-10V dimming down to 1%
- WaveLinX and DLVP connected lighting systems compatibility

TECHNOLOGY & CONTROLS SOLUTIONS



VividTune Technology

- Tunable white solutions from warm to cool white
- Achieve the right color temperature and light intensity
- Balance circadian rhythms as well as provide the best lighting for improved resident experience



WaveLinX Locate Tags

- Ideal for asset management, resident elopement, workflows, staff duress, and infection prevention
- Multiple form factors
- Long battery life



WaveLinX Sensor Options

- Lighting control
- RTLS
- Motion-based alerting
- Occupant counting
- Environmental monitoring

Hallway Areas

Space Overview

Lighting in hallways should be bright enough to feel safe and comfortable while also making a quick evacuation possible during an emergency. With the addition of sensors, the lighting in hallways can also conserve energy by dimming during low-activity periods when no people are present.

Fixtures

- Linear, surface, suspended, and recessed
- Exit & Emergency options: die-cast exit signs, EBPs installed in luminaires

Light Quality

- Precision optics maximize uniformity
- Fixed color temperature 3000K, 3500K recommended







Solutions

- WaveLinX
- Fifth Light
- D2W
- DLVP
- MWS - Modular



Recommended Products

Click on products to learn more

LIGHTING	 <p>Neo-Ray Define</p> <ul style="list-style-type: none"> • Gain precision and flexibility with 2", 3", 4", and 5" widths, specifiable to the nearest inch • Removable flush or drop satin lens design allows staff to easily clean and wipe down • Precision trims accommodate a variety of ceiling types 	 <p>Portfolio LDSQ4</p> <ul style="list-style-type: none"> • LED 4" Square Recessed Downlight or lensed wall wash • W2N Tunable White 2700K-6500K or 2000K-5000K • Lumens: 250-7,500 lumens; 0-10V dimming down to 1% • WaveLinX and DLVP connected lighting systems compatibility 	 <p>HALO Commercial HC4</p> <ul style="list-style-type: none"> • Lumens: 500 - 6,000 • Color: 2700K, 3000K, 3500K, 4000K, 5000K; 80 or 90 CRI • Distributions: Precision-formed reflectors in Narrow, Medium, and Wide • Wall wash distribution with exclusive rotatable linear spread lens • Universal Voltage 120V - 277V; 0-10V dimming to 1% 	TECHNOLOGY & CONTROLS SOLUTIONS	 <p>VividTune Technology</p> <ul style="list-style-type: none"> • Tunable white solutions from warm to cool white • Achieve the right color temperature and light intensity • Balance circadian rhythms as well as provide the best lighting for improved resident experience 	 <p>WaveLinX Locate Tags</p> <ul style="list-style-type: none"> • Ideal for asset management, resident elopement, workflows, staff duress, and infection prevention • Multiple form factors • Long battery life 	 <p>WaveLinX Sensor Options</p> <ul style="list-style-type: none"> • Lighting control • RTLS • Motion-based alerting • Occupant counting • Environmental monitoring
----------	---	--	--	---------------------------------	--	--	--

Dining & Kitchen Areas

Space Overview

The lighting in dining spaces should be comfortable, hospitable, and enhance the appearance of food. Remember, resident families often consider the dining area a barometer of the modernity and quality of a facility. Lighting design should accommodate vision impairment – a common issue with residents. Typically, this means an emphasis on daylight and higher electric light levels.

Fixtures

- Downlights, cylinders, adjustable, track, multi-head, linear, acoustic, troffer, and decorative
- Variety of shapes, sizes, textures, and colors to complement any design

Light Quality

- Precision optics maximize uniformity and glare control
- Fixed color temperature 3500K (recommended) and 4000K

Solutions

- WaveLinx
- D2W
- VividTune



Recommended Products

Click on products to learn more

LIGHTING



Portfolio LDSQ4

- LED 4" Round Recessed Downlight or lensed wall wash
- W2N Tunable White 2700K-6500K or 2000K-5000K
- Lumens: 250-7,500 lumens; 0-10V dimming down to 1%
- WaveLinx and DLVP connected lighting systems compatibility



Portfolio LDSQ2B

- LED 2" Square Recessed Downlight or lensed wall wash
- W2N Tunable White 2700K-6500K or 2000K-5000K
- Lumens: 500-2,000 lumens; 0-10V dimming down to 1%
- WaveLinx and DLVP connected lighting systems compatibility



HALO Commercial HC4

- Lumens: 500 - 6,000
- Color: 2700K, 3000K, 3500K, 4000K, 5000K; 80 or 90 CRI
- Distributions: Precision-formed reflectors in Narrow, Medium, and Wide
- Wall wash distribution with exclusive rotatable linear spread lens
- Universal Voltage 120V - 277V; 0-10V dimming to 1%



HALO Commercial PR4

- Selectable lumens 1000/1500/2000 and 2000/3000/4000
- SeleCCTable color temperature 3000K/3500K/4000K; in 80 or 90 CRI
- Medium or Wide distribution with exclusive reversible 'flip' lens
- Wall wash with accessory louver kit
- Universal Voltage 120V - 277V; 0-10V dimming to 1%

TECHNOLOGY & CONTROLS SOLUTIONS



VividTune Technology

- Tunable white solutions from warm to cool white
- Achieve the right color temperature and light intensity
- Balance circadian rhythms as well as provide the best lighting for improved resident experience



WaveLinx Sensor Options

- Lighting control
- RTLS
- Motion-based alerting
- Occupant counting
- Environmental monitoring

Activity Areas

Space Overview

Activity spaces should be enticing, happy places that encourage resident participation. Lighting may vary – or be controlled – by areas within the space to ensure there's appropriate lighting for the activity at hand.

Fixtures

- Downlights, cylinders, adjustable, track, multi-head, linear, acoustic, troffer, and decorative
- Variety of shapes, sizes, textures, and colors to complement any design

Light Quality

- Precision optics maximize uniformity and glare control
- Fixed color temperature 3500K (recommended) and 4000K
- D2W Dim to Warm color tuning (recommended)

Solutions

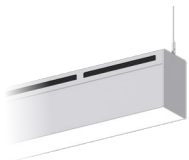
- WaveLinX
- DLVP
- D2W
- VividTune



Recommended Products

Click on products to learn more

LIGHTING



Neo-Ray Define UV-C

- Direct LED + Indirect UV-C enabled
- Suspended and wall mount family in 5" housing sizes
- Upper Air UV-C enabled, safe operation while space is occupied
- UV-C and ambient LED light are controlled separately
- 2700K, 3000K, 3500K, 4000K, and 5000K correlated color temperatures available



Portfolio LER4 / LESQ4

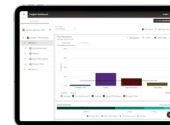
- LED 4" Round and Square Cylinder
- W2N Tunable White 2700K-6500K or 2000K-5000K
- Lumens: 1,000-4,000; Standard 0-10V dimming down to 1%
- WaveLinX and DLVP connected lighting systems compatibility



Portfolio LD4

- New construction downlight for shallow plenum space
- W2N Tunable White 2700K-6500K or 2000K-5000K
- Lumens: 1,000-3,000; 0-10V dimming down to 1%
- WaveLinX and DLVP connected lighting systems compatibility

TECHNOLOGY & CONTROLS SOLUTIONS



WaveLinX Insights App

- Ready-to-use space occupancy dashboards and reports
- Space occupancy trends and comparison
- Real-time occupancy status



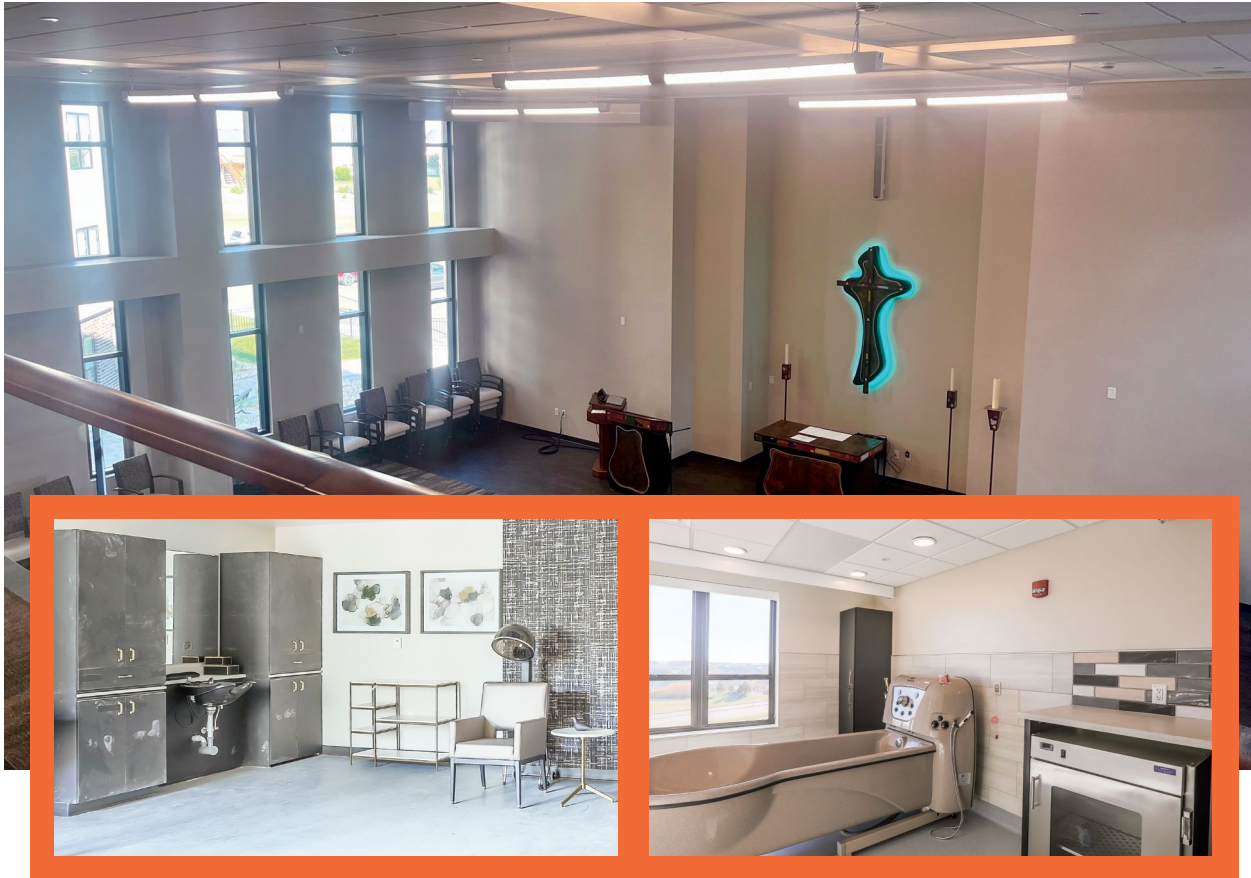
Field Selectable Technology

- Choose from a range of color temperatures and/or lumens with a simple slide on the product
- Multiple products in one, save money by carrying less inventory



MWS Modular Wiring Systems

- No bending, cutting, or assembly is needed
- Reduce construction cycle time with less labor and faster installation
- Easily configure the system for future additions and renovations
- Saves an average of 50% off labor and project expenses



Service Areas

salon - daycare - chapel - spa

Space Overview

Activity spaces should be enticing, happy places that encourage resident participation. Lighting may vary – or be controlled – by areas within the space to ensure there's appropriate lighting for the activity at hand.

Fixtures

- Cylinders, downlights, recessed, adjustable, and decorative complement any design
- Exit & Emergency options: Black exit signs, EBPs installed in luminaires

Light Quality






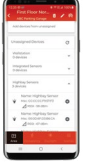
- Besides stage lighting, room and stage functional lighting uniformity is important for staff and visitors
- Low-glare side and wall lighting provides safety and overall ambiance
- Variable light levels are available through switching or dimming
- D2W Dim to Warm color tuning recommended
- 3500K or 4000K fixed color temperature
- Light Level 30Fc, 300Lx

Solutions

- WaveLinx
- DMX solutions with WaveLinx Wired
- VividTune

Recommended Products

Click on products to learn more

LIGHTING	 <p>Portfolio LD4</p> <ul style="list-style-type: none"> • LED 4" Round Recessed Downlight or lensed wall wash • W2N Tunable White 2700K-6500K or 2000K-5000K • Lumens: 1,000-6,000; 0-10V dimming down to 1% • WaveLinx and DLVP connected lighting systems compatibility 	 <p>Portfolio LER4 / LESQ4</p> <ul style="list-style-type: none"> • LED 4" Round and Square Cylinder • W2N Tunable White 2700K-6500K or 2000K-5000K • Lumens: 1,000-4,000; Standard 0-10V dimming down to 1% • WaveLinx and DLVP connected lighting systems compatibility 	 <p>Corelite Continua</p> <ul style="list-style-type: none"> • Available in 4', 8', 12', and continuous runs • Continuous line of light via single-piece luminous roll lens • 500 to 1,500 delivered lumens per foot • Multiple lumen packages with efficacies up to 147 lumens per watt 	 <p>HALO Commercial HC6</p> <ul style="list-style-type: none"> • Lumens: 500 - 6,000 • Color: 2700K, 3000K, 3500K, 4000K, 5000K; 80 or 90 CRI • Distributions: Precision-formed reflectors in Narrow, Medium, and Wide • Wall wash distribution with exclusive rotatable linear spread lens • Universal Voltage 120V - 277V; 0-10V dimming to 1% 	 <p>HALO Commercial HCC6</p> <ul style="list-style-type: none"> • Lumens: 500 - 5,000 • Color: 2700K, 3000K, 3500K, 4000K, 5000K; 80 or 90 CRI • Distributions: Precision-formed reflectors in Narrow, Medium, and Wide • Wall wash distribution with exclusive rotatable linear spread lens • Universal Voltage 120V - 277V; 0-10V dimming to 1% 	TECHNOLOGY & CONTROLS SOLUTIONS	 <p>WaveLinx Lite Mobile App</p> <ul style="list-style-type: none"> • Create groups without additional hardware or IT support required for site setup • Empowering the installer to adjust the settings using a mobile app and Bluetooth • Securely transfer the ownership of a system to the customer once the project is completed
----------	--	---	--	---	--	---------------------------------	---

Nurse Areas

Space Overview

The nurses' station should be a well-lit area for day and night staff. Appropriate lighting solutions improve productivity and reduce errors. Our solutions enhance effectiveness by providing variable CCT for circadian support and glare-free, targeted task lighting that alleviates eye fatigue.

Design Features

Fixtures

- Downlights, cylinders, adjustable, track, multi-head, linear, acoustic, troffer, and decorative
- Variety of shapes, sizes, textures, and colors to complement any design

Light Quality

- Precision optics maximize uniformity
- Multiple color temperature and lumen options







Solutions

- WaveLinX
- DLVP
- D2W - dim to white
- UV-C
- VividTune



Recommended Products

Click on products to learn more

LIGHTING	 <p>Metalux Cruze</p> <ul style="list-style-type: none"> • Latch-less design provides clean architectural look • Ribbed, smooth, square, and round perforated lens options • Integrated sensor systems - occupancy, daylight, and IoT connectivity 	 <p>Fail-Safe GAC</p> <ul style="list-style-type: none"> • Germicidal UV Air Ceiling Mount • Air sanitation fixture with UL 1598 listing • Symmetrical coverage area • Horizontal distribution keeps UV-C in upper air • Can be used in occupied spaces 	 <p>HALO HU30 Undercabinet</p> <ul style="list-style-type: none"> • Universal voltage operates at 120V - 277V • 3/4" Sleek profile and even light distribution; Low-glare optics • PIR Motion Sensor option adds convenience and energy savings • USB optional port charges smart devices • Lengths: 9", 18", 24", 36", and 48"; White and Matte Black finishes 	TECHNOLOGY & CONTROLS SOLUTIONS	 <p>VividTune Technology</p> <ul style="list-style-type: none"> • Tunable white solutions from warm to cool white • Achieve the right color temperature and light intensity • Balance circadian rhythms as well as provide the best lighting for improved resident experience 	 <p>WaveLinX Locate Tags</p> <ul style="list-style-type: none"> • Ideal for asset management, resident elopement, workflows, staff duress, and infection prevention • Multiple form factors • Long battery life 	 <p>WaveLinX Sensor Options</p> <ul style="list-style-type: none"> • Lighting control • RTLS • Motion-based alerting • Occupant counting • Environmental monitoring
----------	---	--	--	---------------------------------	--	--	--



Physical Therapy Space

Space Overview

Did you know natural light and the lighting that mimics it have been proven to aid in healing? That same type of light also creates an inviting, motivational environment for residents visiting the physical therapy room.

Fixtures

- Downlights, adjustable, linear, acoustic, and troffer
- Variety of shapes, sizes, textures, and colors to complement any design

Light Quality







- Precision optics maximize uniformity
- Multiple color temperature and lumen options
- Elevated light levels at the tables

Solutions

- WaveLinX
- UV-C
- DLVP

Recommended Products

Click on products to learn more

LIGHTING	 <p>Metalux Cruze</p> <ul style="list-style-type: none"> • Latch-less design provides clean architectural look • Ribbed, smooth, square, and round perforated lens options • Integrated sensor systems - occupancy, daylight, and IoT connectivity 	 <p>Metalux CGTS</p> <ul style="list-style-type: none"> • Selectable lumens with Low, Medium, and High settings from 2500-6800 lumens • Selectable CCT offered in 3500K, 400K, and 5000K settings • Shallow less than 2" fixture height, ideal for shallow plenums • Minimalist design for visual comforting aesthetics 	 <p>Neo-Ray Define</p> <ul style="list-style-type: none"> • Gain precision and flexibility with 2", 3", 4", and 5" widths, specifiable to the nearest inch • Removable flush or drop satin lens design allows staff to easily clean and wipe down • Precision trims accommodate a variety of ceiling types 	 <p>HALO Commercial PR8</p> <ul style="list-style-type: none"> • Lumens 1000, 1500, 2000, 3000, 4000 • SeleCCTable color temperature 3000K/3500K/4000K; in 80 or 90 CRI • Medium or Wide distribution lens options • Wall wash with accessory louver kit • Universal Voltage 120V - 277V; 0-10V dimming to 1% 	 <p>HALO Commercial HCM1-2-3-4</p> <ul style="list-style-type: none"> • 1, 2, 3, or 4 multi-head adjustable • 355° rotation and 70° tilt • 25° narrow flood reflector included; field interchangeable 15° and 40° options • Lumens: 1200 • Universal Voltage 120V - 277V; 0-10V dimming to 1% and 120V phase-cut to 1% 	TECHNOLOGY & CONTROLS SOLUTIONS	 <p>Neo-Ray Define UV-C</p> <ul style="list-style-type: none"> • Direct LED + Indirect UV-C enabled • Suspended and wall mount family in 5" housing sizes • Upper Air UV-C enabled, safe operation while space is occupied • UV-C and ambient LED light are controlled separately • 2700K, 3000K, 3500K, 4000K, and 5000K correlated color temperatures available
----------	---	---	---	--	---	---------------------------------	--

Exit & Emergency Areas

Space Overview

Life safety lighting is essential and legally mandatory. To help occupants find their way out of the building during an emergency or power outage, exits must be clearly marked and illuminated. Emergency lighting is necessary for continuous illumination in the event of power failure. Power for these applications is provided through battery backup, inverters, or generators.

Design Features

Exit Lighting

- Size and color for code compliance
- Self-powered battery models have 90 minutes of emergency run time

Emergency Lighting

- Provides 90 minutes of emergency illumination when AC power fails

Solutions

- Self-diagnostic products eliminate manual testing
- Inverters provide large-scale emergency power options







Sure-Lites Compliance

- UL 924-listed, NFPA, NEC, OSHA-compliant
- Battery-supplied models are Title 20-compliant



Recommended Products

Click on products to learn more

EXIT LIGHTING				EMERGENCY LIGHTING			
	Sure-Lites CX series	Sure-Lites EUX series	Sure-Lites ARCEL series		Sure-Lites EBP	Sure-Lites SELA	Sure-Lites Inverter
	<ul style="list-style-type: none"> • Surface Mount LED Lamps • Labor savings self-diagnostic standard • Die-cast aluminum housing • Signage options available 	<ul style="list-style-type: none"> • LED sign illumination • NFPA testing automation self-diagnostics standard • Die-cast aluminum housing • Edge Lit panel • Field selectable clear, white, or mirror panel color and directional chevrons 	<ul style="list-style-type: none"> • LED Source for uniform illumination • Architectural look, slimmer housing profile, no visible screws • Aluminum housing • Self-diagnostics is standard 		<ul style="list-style-type: none"> • Emergency battery pack • Up to 2000 lumens/per fixture • NFPA testing automation self-diagnostics options • Install into any fixture • NYC-compliant 	<ul style="list-style-type: none"> • 29 ft coverage • NFPA testing automation self-diagnostics standard • Custom covers • NYC-compliant 	<ul style="list-style-type: none"> • Emergency inverter • 20 watt to 50K watts of power • NFPA testing automation self-diagnostics options • Never visible

Sunroom Areas

Space Overview

Sunrooms bring the outside in for residents when, for whatever reason, they can't go outside. Modern lighting can extend the relaxation and healing properties of sunrooms. Selectable lighting allows staff to adjust the color temperature and amount of light emanating from the luminaire to mimic the light of the sun.

Fixtures

- Downlights, cylinders, linear, acoustic, and decorative
- Variety of shapes, sizes, textures, and colors to complement any design

Light Quality

- Precision optics maximize uniformity
- Fixed color temperature 3000K, 3500K recommended
- Daylighting Harvesting sensor and shade control options maximize natural light exposure

Solutions

- WaveLinX
- D2W
- DLVP
- MWS - Modular
- UV-C



Recommended Products

Click on products to learn more

LIGHTING



Portfolio LAM4

- 1, 2, 3, or 4 multi-head adjustable
- 355° rotation and 70° tilt
- Interchangeable optics from 10° to 70° in 5° increments
- Lumens: 800 and 1,200, 0-10V 1% dimming standard



HALO Commercial PR6

- Selectable lumens 1000/1500/2000 and 2000/3000/4000
- SeleCCTable color temperature 3000K/3500K/4000K; in 80 or 90 CRI
- Medium or Wide distribution with exclusive reversible 'flip' lens
- Wall wash with accessory lower kit
- Universal Voltage 120V - 277V; 0-10V dimming to 1%



Shaper 845 Loop Series

- Decorative and high-performing acrylic and metal pendant
- 2 fixture sizes: 27", 36" ceiling pendant mount
- 6 standard painted metallic finishes and custom color available

TECHNOLOGY & CONTROLS SOLUTIONS



Shaper - 3D Printing Pentalux

- 3D printed products ranging from 8"x8"x8" to 17"x17"x17"
- 16 or 18 neutral color options and 3 inner and 3 outer textures
- Lumen output ranges from 1000-7000



WaveLinX Dimming Switchpack

- Output control loads up to 20 amps or 1.5 HP and 0-10V dimming control with easy junction box mounting
- Universal voltage input (120V-347V)
- Models for normal and emergency (UL924) compliant applications



WaveLinX Locate App

- Quickly locate people in case of emergency
- View real-time location and movement of assets with map visualization
- Use real-time location APIs to exchange data with 3rd-party solutions

Resident Drop-Off & Walkway Areas

Space Overview

Providing a bright, uniform environment welcomes your residents and helps them navigate the space. Drop off areas and walkways need to be well lit and provide a clear path for residents and staff. Lighting is important to ensure residents can easily identify curbs, ramps, and other obstacles.

Design Features

Fixtures

- Area/Site, Wall Mount, and Bollard/Pathway

Light Quality

- Precision optics maximize uniformity
- Multiple color temperatures

Solutions

- WaveLinX
- FADC Dimming Controller
- LumenSafe Security Camera



Recommended Products

Click on products to learn more

LIGHTING



McGraw-Edison BRT6 Bollard

- Pedestrian & Pathway Luminaire
- 4 optical distributions
- Available in 30", 36", and 42" heights
- Up to 4,400 lumens
- Efficacy up to 122 lumens per watt



Invue - ARB Arbor Post Top

- Area & Site LED Luminaire
- Visual Comfort optical configurations
- Up to 9,500 lumens
- Wall mount accessories available
- Integrated, connected, and stand-alone controls



Invue ClearCurve Wall

- Wall Mount Luminaire
- Visual Comfort and Discrete optical configurations
- Up to 12,000 lumens
- 11 color temperature options
- Integrated, connected, and stand-alone controls

TECHNOLOGY & CONTROLS SOLUTIONS



WaveLinX Outdoor Fixture Mount Sensor

- Photocell dusk-to-dawn control
- Passive Infra-Red (PIR) for motion sensing
- Hardware capable of Real-Time Location Services (RTLs)



WaveStream™ Optics

- Provides visual comfort
- Reduces glare
- Particularly beneficial for low mounting height, pedestrian applications



Outdoor Gardens & Courtyard Areas

Space Overview

Exterior spaces can provide needed areas of relaxation, meditation, and rejuvenation for residents, visitors, and staff. Landscape lighting designs can provide various levels of illumination and color, allowing the designer to create an inviting, calm, and safe environment.

Design Features

Fixtures

- Bollard/Pathway, Landscape, Area/Site, and Wall

Light Quality

- Multiple color temperature options


Solutions

- WaveLinX
- FADC Dimming Controller
- LumenSafe Security Camera



Recommended Products

Click on products to learn more

LIGHTING	 <p>Invue - ARB Arbor Post Top</p> <ul style="list-style-type: none"> • Area & Site LED Luminaire • Visual Comfort optical configurations • Up to 9,500 lumens • Wall mount accessories available • Integrated, connected, and stand-alone controls 	 <p>Lumiere Lanterra</p> <ul style="list-style-type: none"> • Landscape lighting • Single and dual head • Field changeable optics • Premium machined • Stand-alone integral sensor option 	 <p>Invue Entri Wall</p> <ul style="list-style-type: none"> • Wall mount luminaire • Optional uplight and colored luminous window • 9 color temperature options 	 <p>Invue ClearPath Bollard</p> <ul style="list-style-type: none"> • Pathway luminaire • Simple yet architectural form • 6 durable finish options • 3 optical distributions 	TECHNOLOGY & CONTROLS SOLUTIONS	 <p>WaveLinX Outdoor Fixture Mount Sensor</p> <ul style="list-style-type: none"> • Photocell dusk-to-dawn control • Passive Infra-Red (PIR) for motion sensing • Hardware capable of Real-Time Location Services (RTLS) 	 <p>WaveStream™ Optics</p> <ul style="list-style-type: none"> • Provides visual comfort • Reduces glare • Particularly beneficial for low mounting height, pedestrian applications
----------	--	--	--	---	---------------------------------	--	---

Parking Areas

Space Overview

Parking areas are very busy places. It's important that residents and staff can easily navigate the spaces in a safe manner. Making sure people and vehicles are easily visible reduces the risk of injury. High-performing and uniform lighting can help motorists and pedestrians identify risks and increase the feeling of safety and security.

Design Features

Fixtures

- Area/Site, Garage/Canopy, Wall Mount, and Pathway

Light Quality

- Precision optics maximize uniformity
- Multiple color temperatures







Solutions

- Connected options for maximum control
- Reduced power and maintenance costs



Recommended Products

Click on products to learn more

LIGHTING	 <p>McGraw-Edison GALN Galleon II</p> <ul style="list-style-type: none"> • Area & Site LED Luminaire • 16 high-efficiency optical distributions • Efficacy up to 159 lumens per watt • Up to 73,500 lumens • Integrated, connected, and stand-alone controls 	 <p>McGraw-Edison TT TopTier</p> <ul style="list-style-type: none"> • Garage & Canopy LED Luminaire • 5 optical distributions • Up to 13,300 lumens • Integrated, connected, and stand-alone controls 	 <p>Lumark Axcnt LED</p> <ul style="list-style-type: none"> • Wall Mount Luminaire • Inverted Wall option • Up to 17,000 lumens • Integrated, connected, and stand-alone controls 	TECHNOLOGY & CONTROLS SOLUTIONS	 <p>WaveLinX Outdoor Fixture Mount Sensor</p> <ul style="list-style-type: none"> • Wireless indoor and outdoor advanced control • Centralized lighting control configuration and management • Passive Infra-Red (PIR) for motion sensing • Photocell dusk-to-dawn control, dimming • Connects to our smart spaces platform and its apps 	 <p>WaveLinX Lite Outdoor Fixture Mount Sensor</p> <ul style="list-style-type: none"> • App-based, programmable for individual and group control • Passive Infra-Red (PIR) for motion sensing • Photocell dusk-to-dawn control, dimming 	 <p>Streetworks FADC Dimming Controller</p> <ul style="list-style-type: none"> • Ten position set points for a full selection of lumen levels • Field adjustable lumen level set points ranging from 20% - 100% • Tool-less adjustability provided thru a rotary dial • Available on full Archeon series
----------	---	---	---	---------------------------------	--	--	--

Why Cooper Lighting Solutions?

For more than 50 years, we've partnered with long-term care facilities to unlock the power of lighting to improve well-being and sustainability while solving unique business problems. Our solutions are tailored to the complex needs of the industry, balancing application requirements with aesthetics to create spaces that are both hospitable and functional – from the parking lot to nurses' stations to residents' suites.

Our extensive luminaire portfolio includes brands that have long been trusted in long-term applications, like McGraw, Metalux, and Fail-Safe. Paired with integrated sensors, the WaveLinx connected lighting system, these solutions provide a foundation for countless operational improvements through valuable facility data and insights.

Imagine having access to real-time data about your facility, assets, and occupants that not only keep people and assets secure, but can be mined to improve everything from workflows to asset utilization.

With the right lighting solutions partner, these capabilities are just the beginning.



Our brands

Industry leading lighting and controls solutions



Ametrix | AtLite | Corelite | Ephesus | Fail-Safe | Fifth Light | Greengate |
HALO Commercial | HALO | Invue | iO | IRiS | Lumark | Lumière | McGraw-Edison | Metalux
| Modular Wiring Systems (MWS) | Neo-Ray | Portfolio | RSA | Shaper |
Shaper PrentaLux | Streetworks | Sure-Lites | WaveLinx | Telensa



Lighting Brands

Ametrix
AtLite
Corelite
Ephesus
Fail-Safe
HALO
HALO Commercial
Invue
iO
Iris
Lumark
Lumière
McGraw-Edison
Metalux
MWS
Neo-Ray
Portfolio
RSA
Shaper
Shaper PrentaLux - 3D Printed Lighting
Streetworks
Sure-Lites
Telensa

Controls Brands

Greengate
Fifth Light

Connected Lighting Systems and Smart Spaces Platform

WaveLinx



SCAN
for more
Healthcare Solutions
information



Cooper Lighting Solutions
1121 Highway 74 South
Peachtree City, GA 30269
P: 770-486-4800
cooperlighting.com

Canada Sales
5925 McLaughlin Road
Mississauga, Ontario L5R 1B8
P: 905-501-3000
F: 905-501-3172

© 2023 Cooper Lighting Solutions
All Rights Reserved
Printed in USA
Publication No. BR50369322
February 2023

Cooper Lighting Solutions is a
registered trademark.

All other trademarks are property
of their respective owners.

Product availability, specifications,
and compliances are subject to
change without notice.