



Commercial Downlighting Product Guide

April 2021



We live in a world of evolving technology, standards and regulations. Designers, architects, electrical engineers, contractors and other professionals are seeking a partner they can trust to deliver product innovation, energy savings and reliability.

At Cooper Lighting Solutions, we build forward-thinking lighting solutions that make people's lives safer, while making buildings, homes and cities smarter and more sustainable. We deliver an industry-leading portfolio of indoor and outdoor lighting, lighting controls and smart lighting systems.

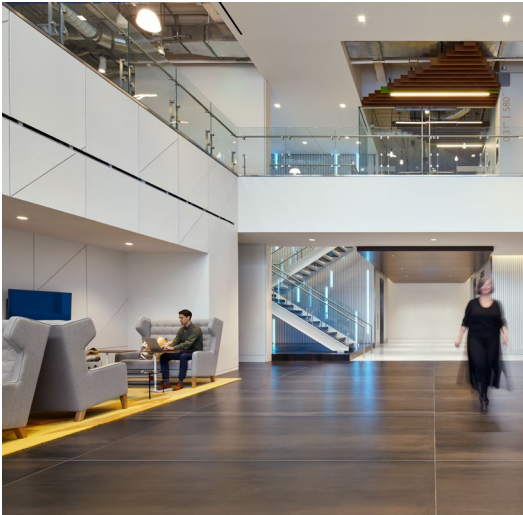
We question, we seek, and we solve. Because building a better world means asking tough questions and pushing harder for answers. Together with our customers, we create solutions that build a better world. At Cooper Lighting Solutions, we push past the ordinary to build brighter.



VERTICAL MARKETS

OFFICE	<ul style="list-style-type: none"> • Open office areas • Private offices • Conference rooms • Corridors 	<ul style="list-style-type: none"> • Lobbies • Break rooms • Restrooms • Canopies 	<ul style="list-style-type: none"> • Stairways • Dining facilities
HEALTHCARE	<ul style="list-style-type: none"> • Patent rooms • Office spaces • Nurses stations • Auditoriums 	<ul style="list-style-type: none"> • Lecture halls • Diagnostic suites • Labs • Dining facilities 	<ul style="list-style-type: none"> • Lobbies • Restrooms • Canopies • Walkways
HOSPITALITY	<ul style="list-style-type: none"> • Guest rooms • Hallways • Stairways • Canopies 	<ul style="list-style-type: none"> • Restaurants • Bars • Lobbies • Restrooms 	<ul style="list-style-type: none"> • Meeting facilities • Ballrooms
EDUCATION	<ul style="list-style-type: none"> • Office spaces • Labs • Art studios • Multi-purpose rooms 	<ul style="list-style-type: none"> • Auditoriums • Lecture halls • Lobbies • Restrooms 	<ul style="list-style-type: none"> • Canopies • Walkways • Stairways
RETAIL	<ul style="list-style-type: none"> • Display windows • Dressing rooms • Cash register areas 	<ul style="list-style-type: none"> • Displays • Restrooms • Storage areas 	
RESTAURANT	<ul style="list-style-type: none"> • Reception • Waiting area • Bar • Booths and tables 	<ul style="list-style-type: none"> • Kitchen • Restrooms • Storage areas 	
MULTI-DWELLING	<ul style="list-style-type: none"> • Living room • Dining • Kitchen • Bedrooms 	<ul style="list-style-type: none"> • Bathrooms • Closet / Storage • Lobby / Elevator courts • Indoor parking 	<ul style="list-style-type: none"> • Hallways • Stairways • Laundry • Gym

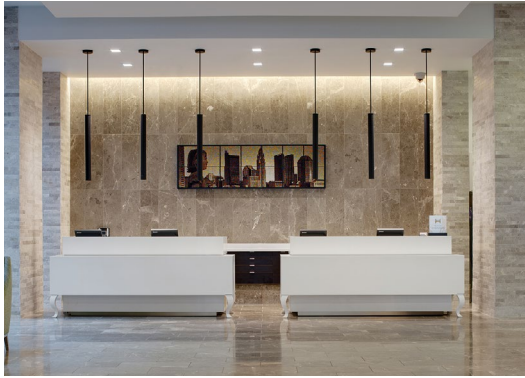
OFFICE





HEALTHCARE

HOSPITALITY





EDUCATION

RETAIL





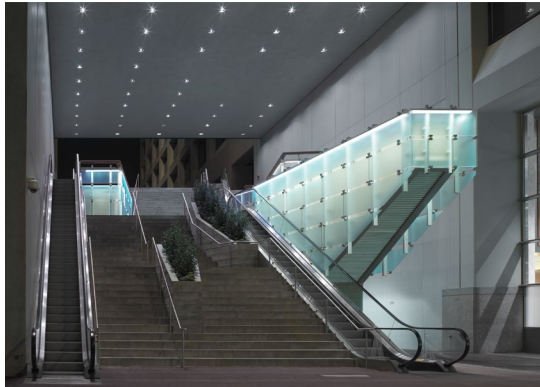
RESTAURANT

MULTI-DWELLING



BRANDS

Portfolio



Specification Downlighting

Lighting Designer
Architect



- Focused on architect and lighting designer requirements
- Highly configurable with high performance optical design for glare free illumination

HALO Commercial



Commercial Downlighting

Distributor
Engineer



- Focused on design build contractor & consulting engineer requirements
- Product offering built with energy efficiency, ease of installation and value in mind

HALO



General Purpose Downlighting

Builder
Contractor



- A broad selection and patented installation features that are focused on the builder and contractor
- Widely distributed with in-stock availability

Portfolio

Specification Downlighting

Portfolio applies a balance of art and science in the design and engineering of its luminaires. It mingles features, efficacy, superior optical control and color into a quality product that provides comfort and efficiency.

Offered with cutting edge connected lighting technology, Portfolio downlights are among the highest efficacy LED luminaires available and can be utilized to create a sustainable lighted environment. Broad product offering can be specified for low or high ceilings in new construction, remodel and retrofit applications. Offered with narrow, medium, wide beam and wall wash reflectors. Designed to enhance any space, with exceptional glare control.



WaveLinx



LA1



LAM4B



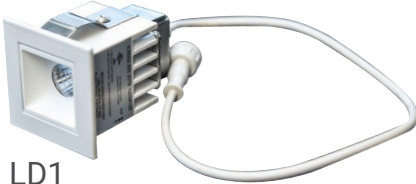
LERS4B



LSR2



LD2



LD1

HALO® Commercial

Commercial Downlighting

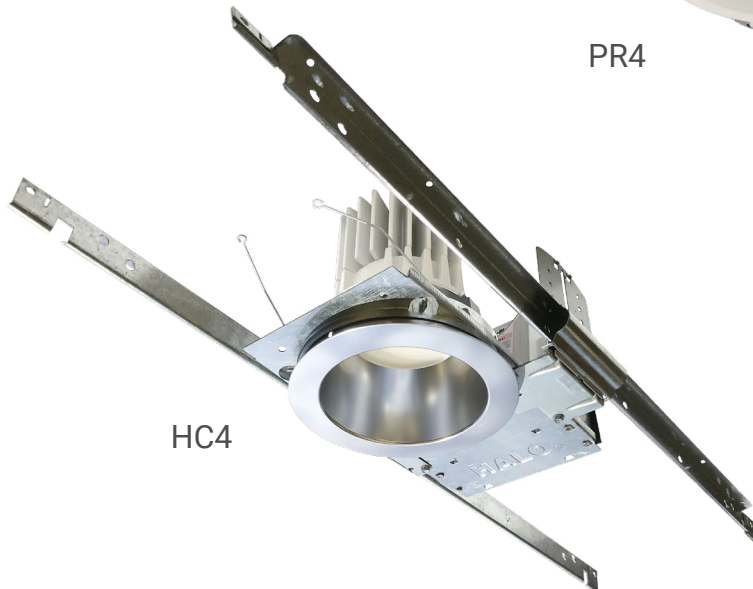
HALO Commercial is the professional's choice for efficiency, performance and value in design/build, tenant improvement, and value engineered projects; delivering on lower watts per square foot in meeting commercial energy codes. With the balance of optical control and energy efficiency, and available with cutting edge connected lighting technology, HALO Commercial is the perfect choice for hospitality, healthcare, education, and institutional projects.



HCC4



PR4



HC4



HCM4

HALO®

General Purpose Downlighting

For over 60 years, HALO has been the industry leader in recessed lighting providing innovative and contractor friendly lighting products for residential and light commercial spaces. State-of-the-art engineering; on-going research and development; and a tradition of unparalleled service have made the HALO product line one that builders know and trust. HALO's longstanding industry leadership, brand equity and user preferences has been further reinforced as HALO has been chosen as the Brand Leader by Builder magazine subscribers for the last twenty-two consecutive years.



H245ICAT
with RL4



HL3



HL36SAR



HLB4

WAVELINX

CONNECTED LIGHTING SYSTEM



Take compliance, network security and energy savings into your own hands.



Automatic code compliance. 7-Tier network security features. Integrated wireless sensors to collect and transmit key building data. And, the ability to control your system from a mobile app and the ability to exchange data with third party applications.

It's simple: WaveLinX just works.

PORTFOLIO | HALO COMMERCIAL

	Family	Description	Delivered Lumens	Round	Square	Downlight	Wall Wash	Adjustable Accent	Multi-head Adjustable	New Construction	Remodeler	Retrofit	Direct (recessed no housing)	Surface/Suspended/Wall Mount	Flange less	Field Selectable Lumens	Field Selectable CCT	Tunable White	Dim to Warm	120V	UNV 120-277V	347V	Phase Cut	0-10V	Emergency	Connected
1"	LA1	Linear adjustable accent	3000		●			●		●	●	●			●					●	●	●	●	●	●	●
	LD1	Linear downlight and wall wash	3000		●	●	●			●	●	●			●					●	●	●	●	●	●	●

2"	LCR2	Shallow lens downlight	800	●		●							●				●			●	●		●	●		
	LDA2	Round adjustable accent	2000	●		●	●	●		●								●	●	●	●	●	●	●	●	●
	LDSQA2	Square adjustable accent	2000		●	●	●	●		●					●			●	●	●	●	●	●	●	●	●
	LD2	Downlight and wall wash	2000	●	●	●	●			●	●	●			●			●	●	●	●	●	●	●	●	●
	LSR2	Downlight cylinder	2000	●	●	●								●					●		●					
	LSRS2	Downlight shallow cylinder	2000	●	●	●								●					●		●					

3"	HL36A	Adjustable accent	1800	●		●	●	●		●				●	●				●	●		●	●			
	HL36SA	Adjustable square accent	1800		●	●	●	●		●				●	●				●	●		●	●			
	HL36AR	Adjustable accent remodel	1700	●		●	●	●			●		●						●	●		●	●			
	HL36SAR	Adjustable square accent remodel	1700		●	●	●	●			●		●						●	●		●	●			
	RA3	Adjustable accent	500	●		●		●		●	●	●						●		●						
	RL3	Shallow lens downlight	500	●		●				●	●	●						●		●						
	HLA3	Adjustable accent	500	●	●	●		●		●	●		●						●		●					
	HLB3	Lens downlight	500	●	●	●				●	●		●					●		●						
	LDA3	Round adjustable accent	2300	●		●	●	●		●								●	●	●	●	●	●	●	●	●

4"	HLA4	Adjustable accent	800	●	●	●		●		●	●		●				●		●							
	HLB4	Ultra-shallow lens downlight	800	●	●	●				●	●	●	●					●		●						
	SLD4	Surface lens downlight	600	●	●	●				●	●	●		●				●		●						
	SMD4	Surface lens downlight	800	●	●	●				●	●	●		●				●		●						
	RA4	Adjustable accent	600	●		●		●		●	●	●	●					●		●						

	Family	Description	Delivered Lumens			Downlight	Wall Wash	Adjustable Accent	Multi-head Adjustable	New Construction	Remodeler	Retrofit	Direct (recessed no housing)	Surface/Suspended/Wall Mount	Flange less	Field Selectable Lumens	Field Selectable CCT	Tunable White	Dim to Warm	120V	UNV 120-277V	347V	Phase Cut	0-10V	Emergency	Connected		
				Round	Square																							
4"	RL4	Lens downlight	900	●		●				●	●	●	●			●				●			●					
	RLD4	Full cutoff downlight	600	●		●				●	●	●				●				●			●					
	RSQ4	Square lens downlight	800		●	●				●	●	●				●				●			●					
	ML4	Modular downlight and wall wash	1100	●	●	●	●			●	●	●							●	●	●		●	●				
	LCR4	Lens downlight	1200	●		●				●	●		●			●					●			●				
	PR4	Lens downlight	4000	●		●	●			●	●	●		●		●	●				●			●	●	●		
	HC4	Full cutoff downlight	4000	●		●	●			●	●	●									●	●		●	●	●		
	HCC4	Full cutoff downlight cylinder	4000	●		●	●							●							●	●		●				
	PRS4	Square lens downlight	4000		●	●	●			●	●					●	●				●			●	●	●		
	HCM1-2-3-4	1, 2 3 or 4 head multi-head recessed	1200 each	●		●			●	●	●				●						●			●	●	●	●	
	LDA4	Round adjustable accent	2800	●		●	●	●		●					●					●	●		●	●	●	●	●	
	LD4	Full cutoff round downlight	6000	●		●	●			●	●	●	●					●	●	●	●	●	●	●	●	●	●	
	LER4	Full cutoff downlight cylinder	4000	●		●	●							●			●	●	●	●	●	●	●	●		●		
	LDSQ4	Full cutoff square downlight	6000		●	●	●			●					●		●	●	●	●	●	●	●	●	●	●	●	
	LDSQA4	Square adjustable accent	2800		●	●	●	●		●					●					●	●		●	●	●	●	●	
	LESQ4	Full cutoff downlight square cylinder	4000		●	●	●							●				●	●	●	●	●	●	●		●		
	LERS4	Full cutoff downlight shallow cylinder	3000	●		●	●							●			●	●	●	●	●	●	●	●		●		
	LSSQS4	Full cutoff downlight shallow square cylinder	4000		●	●	●							●				●	●	●	●	●	●	●		●		
LAM4	1, 2 3 or 4 head multi-head recessed	800 & 1200 each	●		●			●	●	●				●			●	●		●			●	●	●	●		

* The starting price for HCM2, 3, 4 are not shown.

	Family	Description	Delivered Lumens	Round	Square	Downlight	Wall Wash	Adjustable Accent	New Construction	Remodeler	Retrofit	Direct (recessed no housing)	Surface/Suspended/Wall Mount	Flange less	Field Selectable Lumens	Field Selectable CCT	Tunable White	Dim to Warm	120V	UNV 120-277V	347V	Phase Cut	0-10V	Emergency	Connected
5"	RSQ5	Lens downlight	800		●	●			●	●	●				●				●			●			
	ML56	Modular downlight, wall wash and accent	1200	●		●	●	●	●	●	●							●		●		●	●		

6"	SLD6	Surface lens downlight	1200	●	●	●			●	●	●		●			●			●	●		●	●			
	SMD6	Surface lens downlight	1200	●	●	●			●	●	●		●			●			●	●		●	●			
	HLB6	Ultra-shallow lens downlight	800	●	●	●			●	●		●				●			●	●		●	●			
	RA56	Adjustable accent	600	●		●		●	●	●	●	●				●			●			●				
	RL56	Lens downlight	1200	●		●	●		●	●	●	●	●			●			●			●				
	RLD6	Full cutoff downlight	600	●		●			●	●	●					●			●			●				
	RSQ6	Lens downlight	800		●	●			●	●	●					●			●			●				
	ML56	Modular downlight, wall wash and accent	1200	●		●	●	●	●	●	●								●		●		●	●		
	LCR6	Lens downlight	3000	●		●			●	●		●				●			●			●				
	PR6	Lens downlight	4000	●		●	●		●	●	●		●		●	●			●			●	●	●		
	HC6	Full cutoff downlight	4000	●		●	●		●	●	●								●	●		●	●	●		
	HCC6	Full cutoff downlight cylinder	4000	●		●	●						●						●	●		●				
	PRS6	Square lens downlight	4000		●	●	●		●	●					●	●			●			●	●	●		
	LDA6	Round adjustable accent	7500	●		●	●	●	●					●					●		●	●	●	●	●	
	LD6	Full cutoff downlight	7000	●		●	●		●	●	●			●			●	●	●	●	●	●	●	●	●	
	LER6	Full cutoff downlight cylinder	6000	●		●	●						●					●	●	●	●	●	●		●	
	LDSQ6	Full cutoff downlight	7000		●	●	●		●					●			●	●	●	●	●	●	●	●	●	
	LESQ6	Full cutoff downlight cylinder	6000		●	●	●		●					●			●	●	●	●	●	●	●		●	
LERS6	Full cutoff downlight shallow cylinder	4000	●		●	●		●	●	●			●			●	●	●	●	●	●	●	●	●		
LSSQS6	Full cutoff downlight shallow cylinder	4000		●	●	●		●					●			●	●	●	●	●	●	●		●		

	Family	Description	Delivered Lumens	Round	Square	Downlight	Wall Wash	Adjustable Accent	New Construction	Remodeler	Retrofit	Direct (recessed no housing)	Surface/Suspended/Wall Mount	Flange less	Field Selectable Lumens	Field Selectable CCT	Tunable White	Dim to Warm	120V	UNV 120-277V	347V	Phase Cut	0-10V	Emergency	Connected
8"	HLB8	Ultra-shallow lens downlight	2200	●		●			●	●		●			●	●			●	●		●	●		
	LCR8	Lens downlight	8000	●		●			●	●						●				●			●		
	PR8	Lens downlight	4000	●		●	●		●	●	●		●			●				●			●	●	●
	HC8	Full cutoff downlight	8000	●		●	●		●	●	●									●	●		●	●	●
	HCC8	Full cutoff downlight cylinder	8000	●		●	●						●							●	●		●		
	LD8	Full cutoff downlight	20000	●		●	●		●	●	●						●	●		●	●	●	●	●	●
	LSR8	Full cutoff downlight cylinder	15000	●		●	●						●				●	●		●	●	●	●		●
	LSRS8	Shallow downlight cylinder	6000	●		●	●						●				●	●		●	●	●	●		●
12"	SMD12	Surface lens downlight	2000	●	●	●			●	●	●		●			●				●					
	HLB12	Surface lens downlight	2200	●		●			●	●		●			●	●				●			●		
14"	SMD14	Surface lens downlight	2000	●	●	●			●	●	●		●			●				●			●		

1"



LA1
Portfolio



LD1
Portfolio

2"



LCR2
HALO Recessed



LDA2
Portfolio



LDSQA2
Portfolio

2"



LD2
Portfolio



LSR2
Portfolio



LSRS2
Portfolio

3"



HL36A/HLS6SA
HALO Recessed



HL36AR/HL36SAR
HALO Recessed

3"



RA3
HALO Recessed



RL3
HALO Recessed



HLA3
HALO Recessed



HLB3
HALO Recessed



LDA3
Portfolio

4"



HLA4
Halo Recessed



HLB4
Halo Recessed



SLD4
Halo Recessed



SMD4
Halo Recessed



RA4
Halo Recessed



RL4
Halo Recessed

4"



RLD4
Halo Recessed



RSQ4
Halo Recessed



ML4
Halo Recessed



LCR4
Halo Recessed



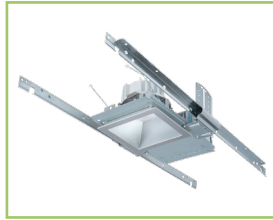
PR4
Halo Commercial



HC4
Halo Commercial



HCC4
Halo Commercial



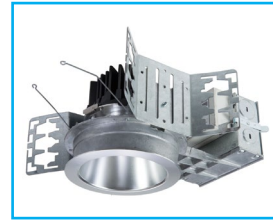
PRS4
Halo Commercial



HCM1-2-3-4
Halo Commercial



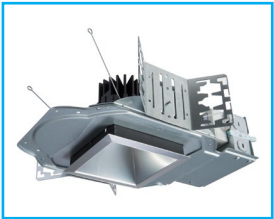
LDA4
Portfolio



LD4
Portfolio



LER4
Portfolio



LDSQ4
Portfolio



LDSQA4
Portfolio



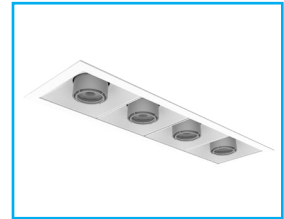
LESQ4
Portfolio



LERS4
Portfolio



LESQS4
Portfolio



LAM 1-2-3-4
Portfolio

5"



RSQ5
Halo Recessed



ML56
Halo Recessed



HALO



HALO Commercial



Portfolio

6"



SLD6
Halo Recessed



SMD6
Halo Recessed



HLB6
Halo Recessed



RA56
Halo Recessed



RL56
Halo Recessed



RLD6
Halo Recessed



RSQ6
Halo Recessed



ML56
Halo Recessed



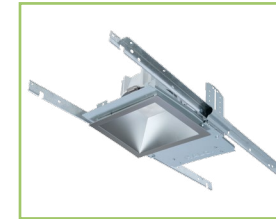
LCR6
Halo Recessed



HC6
Halo Commercial



HCC6
Halo Commercial



PRS6
Halo Commercial



PR6
Halo Commercial



LDA6
Portfolio



LD6
Portfolio



LER6
Portfolio



LDSQA6
Portfolio



LDSQ6
Portfolio



LESQ6
Portfolio



LERS6
Portfolio



LSSQS6
Portfolio

8"



HLB8
Halo Recessed



LCR8
Halo Recessed



PR8
Halo Commercial



HC8
Halo Commercial recessed



HCC8
Halo Commercial



LD8
Portfolio



LSR8
Portfolio



LSRS8
Portfolio

12"



SMD12
Halo Recessed



HLB12
Halo Recessed

14"



SMD14
Halo Recessed

Lighting Product Lines

Ametrix
AtLite
Corelite
Ephesus
Fail-Safe
HALO
HALO Commercial
Invue
io
IRiS
Lumark
Lumière
McGraw-Edison
Metalux
MWS
Neo-Ray
Portfolio
RSA
Shaper
Streetworks
Sure-Lites

Controls Product Lines

Greengate

Connected Lighting Systems

Fifth Light (Canada Only)
HALO Home
WaveLinx

IoT Platform

Trellix



Cooper Lighting Solutions
1121 Highway 74 South
Peachtree City, GA 30269
P: 770-486-4800
www.cooperlighting.com

Canada Sales
5925 McLaughlin Road
Mississauga, Ontario L5R 1B8
P: 905-501-3000
F: 905-501-3172

© 2021 Cooper Lighting Solutions
All Rights Reserved
Printed in USA
Publication No. BR518110EN
April 14, 2021 11:12 AM

All other trademarks are property
of their respective owners.

Product availability, specifications,
and compliances are subject to
change without notice.