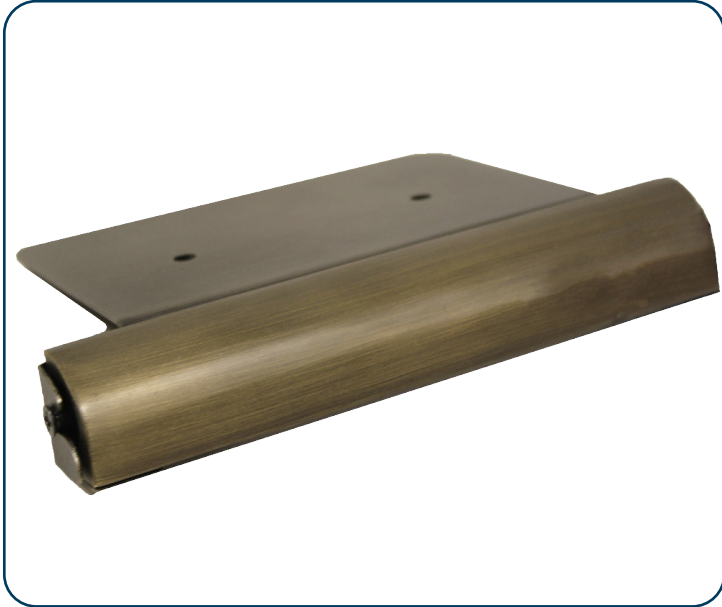




SOURCE
LIGHTING CO.

6" Engineered Wall Light with Adjustable Lumen Output (SEWL60ML)



Description:

- ▶ Four light levels at 100%, 70%, 50%, and 30%
- ▶ 2700 CCT warm white
- ▶ Frosted lens with 8-chip LED
- ▶ 2.5 watt and 80 lumen at 100%
 - 70% power setting = 1.75W and 55 lumen
 - 50% power setting = 1.25W and 40 lumen
 - 30% power setting = .75W and 25 lumen
- ▶ 9-24 volt operating range
- ▶ 80 CRI
- ▶ Rated hours: 50,000
- ▶ Ambient operating temperature -40 to +50 Celsius
- ▶ Aged brass finish, 6 in. L X .70 in. W X 1 in. H
- ▶ Detachable body for easy repair
- ▶ 48 in. #18 AWG lead wire with quick connect for easy repair
- ▶ Can be used with the Set-N-Stone® (CSIS)
- ▶ LED & housing 10-year warranty
- ▶ ETL approval

