



## PRODUCT GUIDE

### Spot Lights

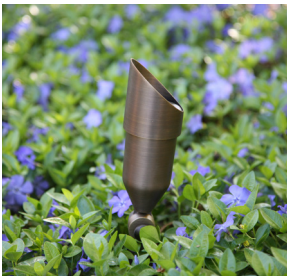


Use these Spot Lights for uplighting plant material, trees, structures, and other architectural features. Both spot light options are a beautiful brass finish, and can achieve multiple lighting functions with many lumen and beam spread capabilities.

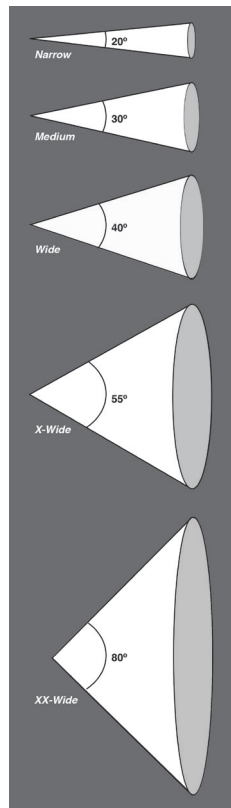
#### Adjustable Beam/Lumen Spot Light



#### MR-16 Halogen Spot Light



**Achieve These Beam Spreads in the SBL20 by using Source Lighting LED MR-16 Lamps!**



#### Description:

- Field Adjustable Wattage & Lumen Level
- 20° to 60° Beam Angle Adjustment Range
- 5 Lumen Intensity Settings
- Set-n-Stake® Quick Link Composite with Brass insert Stake Mount
- Integrated Cree CXA series LED with fin design for heat dissipation
- Moisture Relief Valves
- SBLABL1 Product Covered by Patent #'s: 9,115,857; 9,140,414; 9,316,379; 9,541,263; 9,945,538



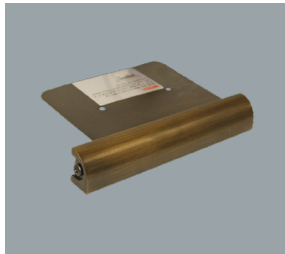
## PRODUCT GUIDE

### Engineered Wall Lights



Use these Engineered Wall Lights for lighting steps, walkways, and underneath capstones. These lights have an integrated LED Strip and easily removable light module.

**Rounded Edge LED**



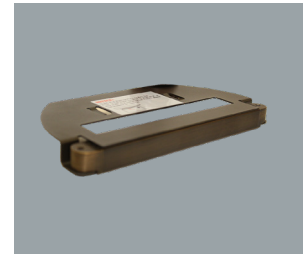
**SEWL60R**

**Square Edge LED**



**SEWL45S**

**Square Edge LED**



**SEWL70S**

### Path/Area Lights



Use these Path/Area Lights for lighting pathways, planting beds, and other areas. These lights have both frosted and clear lenses included. All Hats, Stem Assemblies and Lamps are sold separately.

**Path/Area Light Hat**



**SAL100**

**Path/Area Light Hat**



**SAL150**

**Stem Assemblies**



**SALSTEM12,  
SALSTEM18**

\*Use Source Mini LED Lamp (SLBP250L)