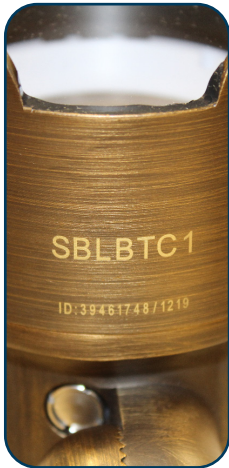




## Bluetooth LED RGBW Adjustable Color Spotlight (SBLBTC1)



### Features:

- ▶ Three times brighter color than comparable MR16 products
- ▶ Set-N-Stake Quick Link Composite with Brass Insert Stake
- ▶ Brass Body and Knuckle with Bronze Finish
- ▶ Bayonet Shroud adjustment provides five different settings
- ▶ Fixed 36° Beam Angle
- ▶ High Impact Glass Lens
- ▶ IP65 Rated for harsh environments
- ▶ 10 Year Warranty
- ▶ 12V-15V AC/DC Power Range
- ▶ Wattage: 2Watt - 10Watt
- ▶ Provided with 6 Foot, 105° rated, #18-2 Lead Wire
- ▶ Includes Hex Key Adjustment Tool (4mm)
- ▶ Moisture Relief Valves ensure no condensation accumulates inside fixture
- ▶ Operating range -30° to +45°C
- ▶ Dimmable from 5% to 100% all color options
- ▶ CCT Range Tunable from 2500K (@76.8CRI) to 6500K (@83.2CRI)
- ▶ RGB Options: Unlimited color wheel options. Preset Red, Green, Blue, White
- ▶ Fixture grouping, individual scene control, preset scenes, color cycling
- ▶ Complies with requirement of UL-1838 and CAN/CSA-C22.2 No. 250.7

### Unit **REQUIRES** the use of Range Extender (SBLBTR)

Place Repeaters 1-10 feet from farthest fixtures. Use multiple repeaters spaced 20' apart for full coverage (sold separately)

### BLUETOOTH RGBW SPOTLIGHT Electrical and Photometric Test Results

Fixture SBLBTC1	Color Setup in App	Flux	Beam Angle	Voltage	Current	Power	Pf	VA
*Testing done at full power	[ - ]	[ Lumens ]	[ ° ]	[ VAC ]	[ A ]	[ W ]	[ - ]	
Source Lighting SBLBTC1 Spotlight	2700°	342	36°	12.0	1.7	10.300	0.732	14.1
Source Lighting SBLBTC1 Spotlight	Green	249	36°	12.0	1.2	10.700	0.730	14.7
Source Lighting SBLBTC1 Spotlight	Red	133	36°	12.0	1.1	9.260	0.720	12.9
Source Lighting SBLBTC1 Spotlight	Blue	47	36°	12.0	1.2	10.300	0.732	14.1
Source Lighting SBLBTC1 Spotlight	Indigo	92	36°	12.0	1.1	9.670	0.728	13.3