

Award Winning

the wave

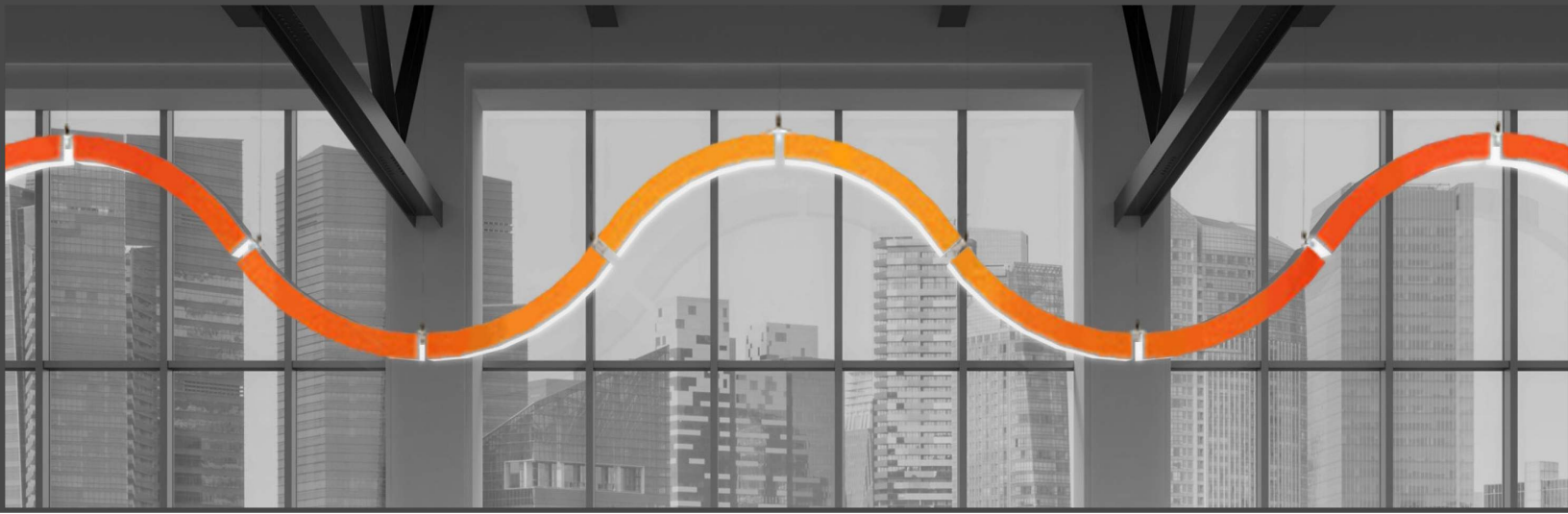
 barbican



The Wave by Barbican was engineered as a modular, reconfigurable and stand alone high performance LED lighting system utilizing the most advanced Green Energy technology.

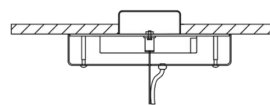
It offers contemporary and distinctive design with performance levels ideal for today's commercial, healthcare and hospitality environments.

With its sleek and compact design and multitude of finish options, the Wave is

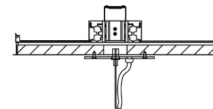


DRIVER LOCATIONS

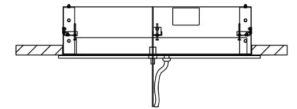
Surface Ceiling
Location (SCL)



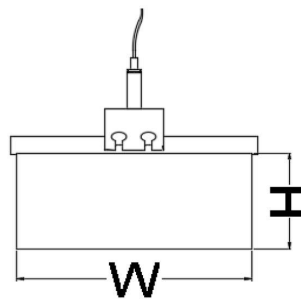
Above Ceiling
Location (ACL)



Flush Ceiling
Location (FCL)



WIDTH & HEIGHT OPTIONS



W	H
4"	3", 4", 6", 8"
6"	3", 4", 6", 8", 10", 12"
8"	3", 4", 6", 8", 10", 12"
10"	3", 4", 6", 8", 10", 12"
12"	3", 4", 6", 8", 10", 12"

distinguished in its versatility and adaptability to any environment and application.

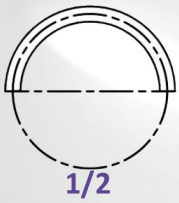
The Wave is manufactured to Barbican's highest construction standards and made available in our industry-leading laminated, washable and maintenance-free finishing process.

All fixtures are fully enclosed which reduces dirt and dust infiltration, providing years of unobstructed use.

Available in individual modules, the Wave product line offers an extensive range of shapes, sizes and proportions to meet the demands of any specification.

the wave

dimension chart



H = 3"						
Circle section	1/2	1/3	1/4	1/6	1/8	1/12
RADIUS	L/H (tot)	L/H (tot)	L/H (tot)	L/H (tot)	L/H (tot)	L/H (tot)
24	52"/26"	44"/14"	37"/10"			
48		86"/26"	71"/17"	50"/9"		
96				98"/16"	75"/18"	
144					112"/14"	76"/8"

H = 8"						
Circle section	1/2	1/3	1/4	1/6	1/8	1/12
RADIUS	L/H (tot)	L/H (tot)	L/H (tot)	L/H (tot)	L/H (tot)	L/H (tot)
24	57"/28"	49"/18"	40"/14"			
48		91"/30"	74"/21"	52"/14"		
96				100"/21"	76"/15"	
144					114"/19"	77"/13"

H = 4"						
Circle section	1/2	1/3	1/4	1/6	1/8	1/12
RADIUS	L/H (tot)	L/H (tot)	L/H (tot)	L/H (tot)	L/H (tot)	L/H (tot)
24	53"/27"	46"/15"	37"/11"			
48		87"/28"	71"/18"	50"/10"		
96				98"/17"	75"/11"	
144					112"/15"	76"/9"

H = 10"						
Circle section	1/2	1/3	1/4	1/6	1/8	1/12
RADIUS	L/H (tot)	L/H (tot)	L/H (tot)	L/H (tot)	L/H (tot)	L/H (tot)
24	59"/30"	51"/20"	42"/16"			
48		93"/32"	76"/23"	53"/16"		
96				101"/22"	78"/17"	
144					114"/21"	77"/15"

H = 6"						
Circle section	1/2	1/3	1/4	1/6	1/8	1/12
RADIUS	L/H (tot)	L/H (tot)	L/H (tot)	L/H (tot)	L/H (tot)	L/H (tot)
24	55"/27"	48"/17"	39"/12"			
48		89"/29"	73"/19"	51"/12"		
96				99"/19"	76"/13"	
144					113"/17"	76"/11"

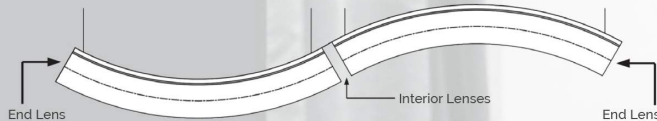
H = 12"						
Circle section	1/2	1/3	1/4	1/6	1/8	1/12
RADIUS	L/H (tot)	L/H (tot)	L/H (tot)	L/H (tot)	L/H (tot)	L/H (tot)
24	61"/31"	53"/21"	43"/17"			
48		94"/33"	77"/24"	54"/18"		
96				102"/24"	78"/19"	
144					115"/23"	78"/17"

FIXTURE SHAPES



DIFFUSER DEFAULTS

MODULAR FORMATIONS: Interior diffusers are opal by default. End diffusers can either match the front material (MFM), or the bottom lens (MBL).



SOLO PENDANTS: The default is to match the ends/sides to the front material (ie. fabric or print).



canada
usa

479 central avenue | fort erie, ontario | L2A 3T9

266 elmwood avenue, unit 386 | buffalo, new york | 14222

p: 800 663 5781 f: 905 991 9708

www.barbican.ca

