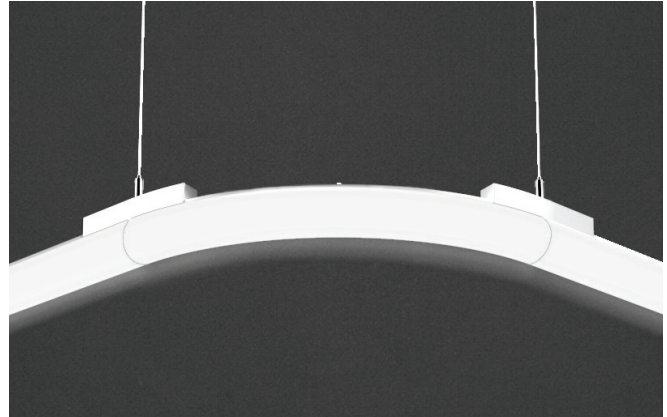


# HPC SOLO

CURVE

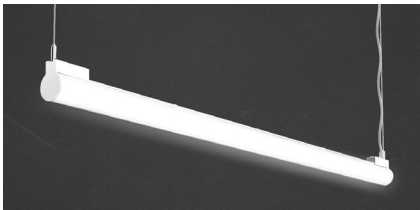


An even, continuous, tubular, architectural light source with a minimal profile, providing evenly diffused light from a single LED source at the top of the tube. Perfectly designed for spaces requiring diffused light that provides soft and even illumination on walls, ceilings, and work surfaces. The minimalist size of the profile creates visual interest without overwhelming a space. Subtle illuminated joints maintain the continuous look with minimal distraction.

The customizable **HPC Solo** system provides many configurations to fit any space including standard configurations for straight, curved, or welded continuous runs, as well a free form design possibilities with horizontal and vertical change of direction possible. All illuminated in our slimmest 2" dia profile, HPC Solo will ensure your space feels considered and beautiful. HPC Solo Curve comes standard in various radius and segment combinations for horizontal change of direction. For vertical curving or ceiling-to-wall transitions, please use the HPC Solo FreeForm.



## AVAILABLE CONFIGURATIONS



Straight

## RELATED PRODUCT



HPC LITE



HPC3



FOM

## AVAILABLE FINISH OPTIONS



# HPC SOLO

## CURVE



### SPECIFICATION (1/2)

Fixture	Diameter	Radius	Angle	Mounting	Driver Location	Voltage
<b>26-C</b>	<b>2D</b>					<b>UNV</b>
<b>26-C</b> HPC SOLO Curve	<b>2D</b> 2"	<b>12R</b> 12" <b>18R</b> 18" <b>24R</b> 24" <b>30R</b> 30" <b>36R</b> 36" <b>42R</b> 42" <b>48R</b> 48" <b>CUSR</b> Custom Radius	<b>45DEG</b> 45° <b>90DEG</b> 90° <b>CUSDEG</b> Custom Angle <i>Designates segment of a full circle for a horizontal curve. For vertical curving, please use HPC Solo FreeForm.</i>	<b>ACM</b> Aircraft Cable <b>SFM</b> Surface Mount* <i>Consult factory for surface mounting</i> <i>* Requires "RD" Remote Driver option</i>	<b>SCDL</b> Surface Canopy <b>RDDL</b> Remote Driver <b>ADDL</b> ACT Remote Driver <b>RCDL</b> Recessed Canopy	<b>UNV</b> 120/277 Volts <i>Consult factory for other voltages</i>

Canopy Finish	End Cap Finish	Power Cable Finish	Delivered Lumens
<b>WCF</b> White <b>BCF</b> Black <b>SCF</b> Silver <b>RAL</b> Custom <i>RAL North America; Consult factory</i>	<b>WEC</b> White <b>BEC</b> Black <b>SEC</b> Silver <b>RAL</b> Custom <i>RAL North America; Consult factory</i>	<b>WPC</b> White <b>BPC</b> Black <b>XPC</b> None <i>for use with "SM" Surface Mount only</i>	<b>0400LM</b> Standard 400 lm/ft (4.2W/ft) <b>0600LM</b> Standard 600 lm/ft (6.3W/ft) <b>0800LM</b> Standard 800 lm/ft (8.4W/ft) <b>CUSLM</b> Custom Lumen Output* <i>200lm/ft - 800lm/ft; Consult factory for outputs outside of this range</i>

Color Temperature	Color Rendering	Dimming Driver	Options Continued on Next Page
	<b>90CRI</b>		
<b>2700K</b> 2700K <b>3000K</b> 3000K <b>3500K</b> 3500K <b>4000K</b> 4000K <b>5000K</b> 5000K	<b>2765K</b> Tunable White* <i>2700K - 6500K</i> <b>RGB30</b> RGBW* <i>RGB + 3000K</i> <b>3000FS</b> Full Spectrum* <i>3000K</i> <b>3500FS</b> Full Spectrum* <i>3500K</i> <b>CUSK</b> Custom CT* <i>2400K - 6000K;</i> <i>*Consult factory for CT options in this column</i>	<b>90CRI</b> 90+ CRI	<b>S010V10</b> Standard 0-10V, 10% <b>S010V01</b> Standard 0-10V, 1% <b>E010V01</b> eldoLED 0-10V, 1% <b>EDALI01</b> eldoLED DALI, 0.1% <b>EDMX01</b> eldoLED DMX, 0.1% <b>LECO01</b> Lutron EcoSense, 1% <b>MOLPOE</b> Molex POE Node <b>CUSDD</b> Other Driver Options <i>Consult factory for availability of other driver options</i>

## SPECIFICATION (2/2)

### Modular Configuration\*

### Acoustics

**NCMC** No Configuration  
**CUSMC** Custom Configuration  
*Drawing Required. Consult factory*

\* See following pages for corners and configuration options

**NOAC** No Acoustics  
**ADAC** Add Acoustics  
*Consult factory for availability*

## WRITTEN SPECIFICATIONS

### LED System

- LED Circuitry is applied to minimum 0.0625" thick aluminum extruded cores for excellent heat management.
- LEDs are 90+CRI, 3 SDCM.
- 4 foot fixture performance at 3000K, 90 CRI, 2435 lumens, 25.64 Watts, 95 LPW delivered

### Construction

- Diffuser: 0.120" Extruded PETG (polyethylene terephthalate glycol-modified); which is a variant of PET used in water bottles everywhere. Designed to be used in environments where high levels of disinfectant products are used. It is also has a much higher impact resistance than Acrylic and is available up to 20 feet in single lengths.
  - Barbican uses a proprietary diffusion formula PETG which in conjunction with the LED system provides excellent efficiencies of up to 115 lumens per watt at 3000K 90+ CRI.
- Metal construction to be aluminum minimum 0.0625" thickness. Fasteners are to be stainless steel.
- Cable grippers are nickel plated solid brass and stainless steel. Cables are 1/16" stainless steel.
- Canopies and driver housings are minimum 0.0625" aluminum.

### Mounting

- Surface cable mounts are nickel plated solid brass and are supplied with escutcheon plates for through surface power cables. Power cables are low voltage from the canopy/remote mounted drivers.
- Drivers:** All drivers are mounted remote from the fixture. Standard drivers include 0-10V 10% dimming 120/277V with Power Factor of >.9. Barbican works with most Control and Driver manufacturers including POE and can easily modify the driver housings for special control gear. Fixtures over 96W may require more than one driver per fixture.
- Emergency fixtures are supplied with leads and KO for UL924 relays (by others). Battery back up will usually only drive one or two of the cores in larger fixtures to maintain the 90 minute requirement. Maximum distance driver to fixture 15 feet.
- Labels:** ETL US and Canada, CE Europe and Middle East (Dry, Damp indoor use only)
- Finish:** Polyester Powder Coated standard.
- Lumen Maintenance:** Reported L90 > 10,000hrs, Calculated > 60,000hrs (TM-21)
- Warranty:** 5 years limited at 25 Celsius. Contact Barbican for additional information.

## LABELS



ETL/CE Listed



Dry/Damp Rated



5 Year Warranty



Power Over Ethernet



Tunable White



RGBW Color Tuning



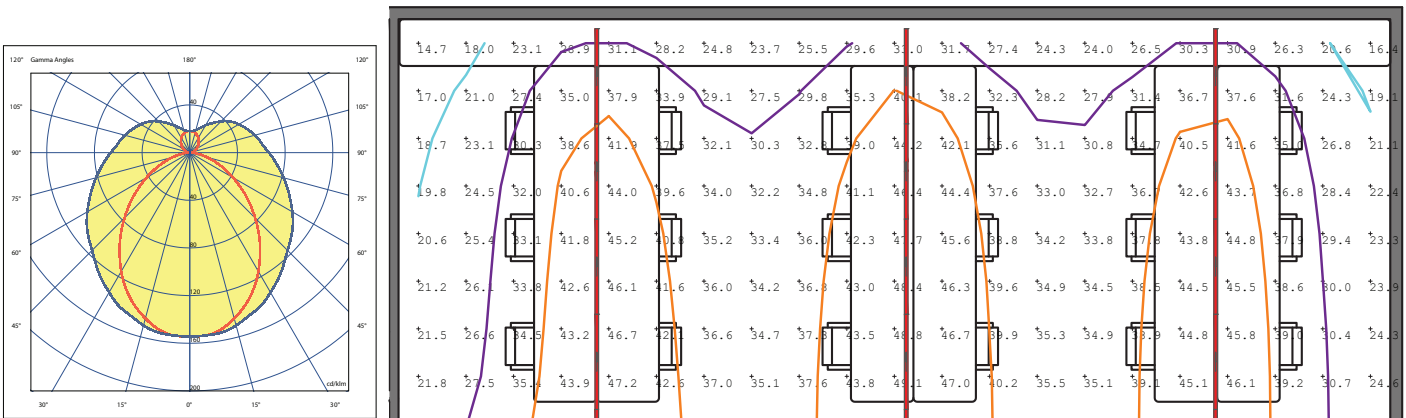
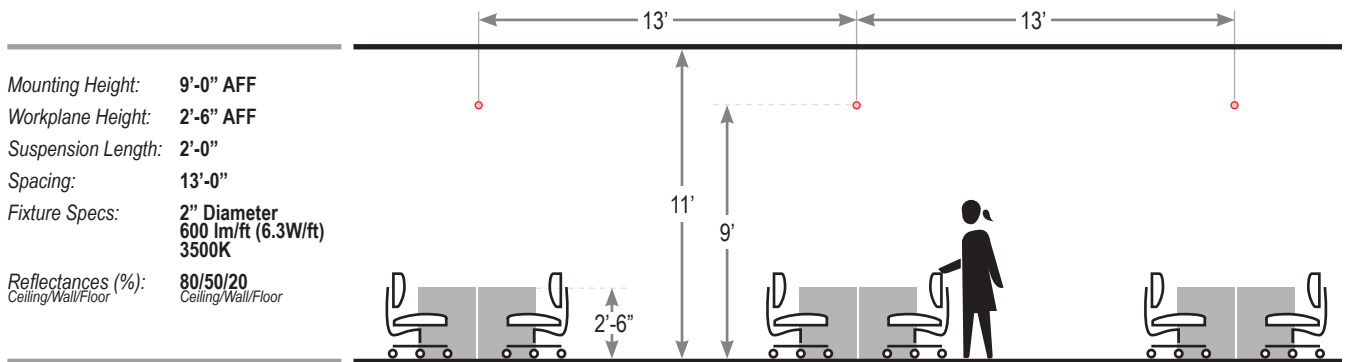
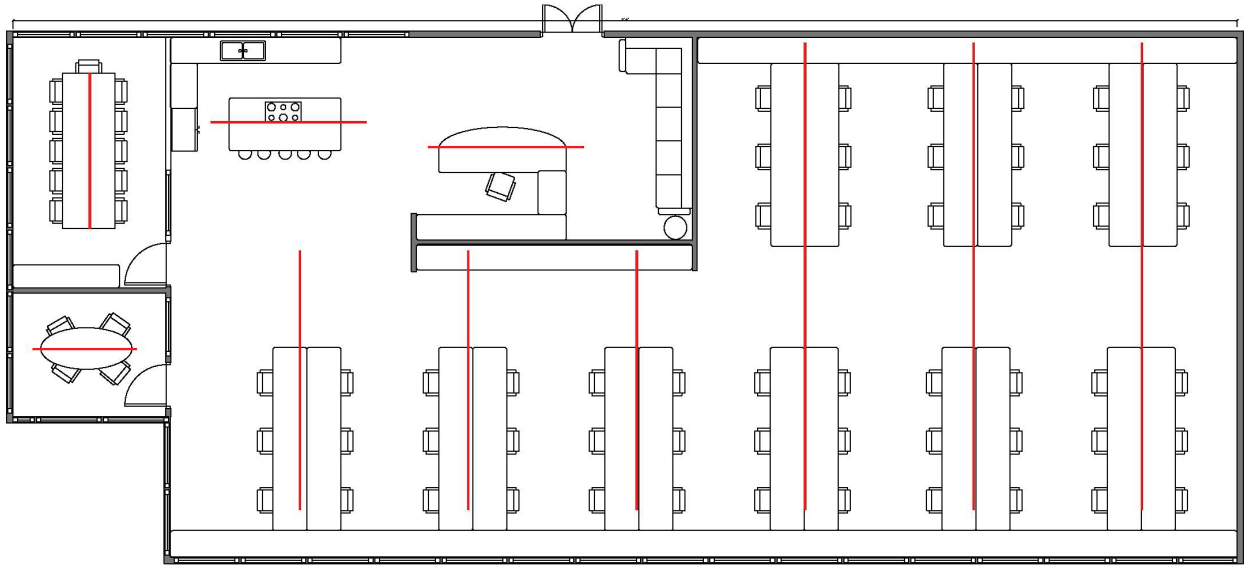
Full Spectrum

# HPC SOLO

## CURVE



### EXAMPLE LAYOUT (1/2) Linear

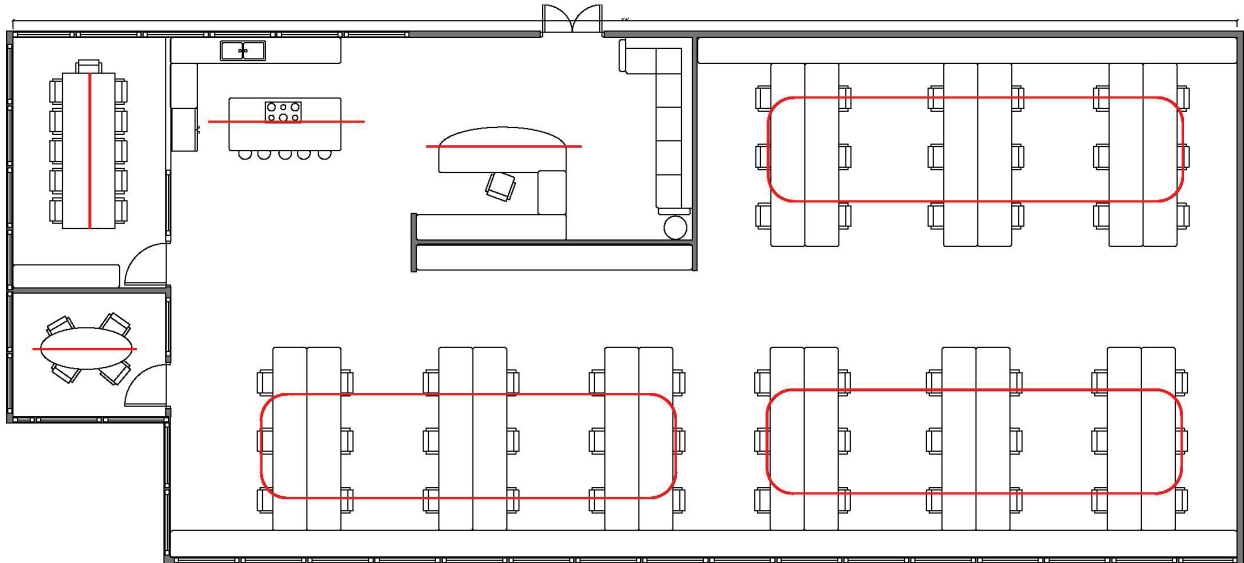


# HPC SOLO

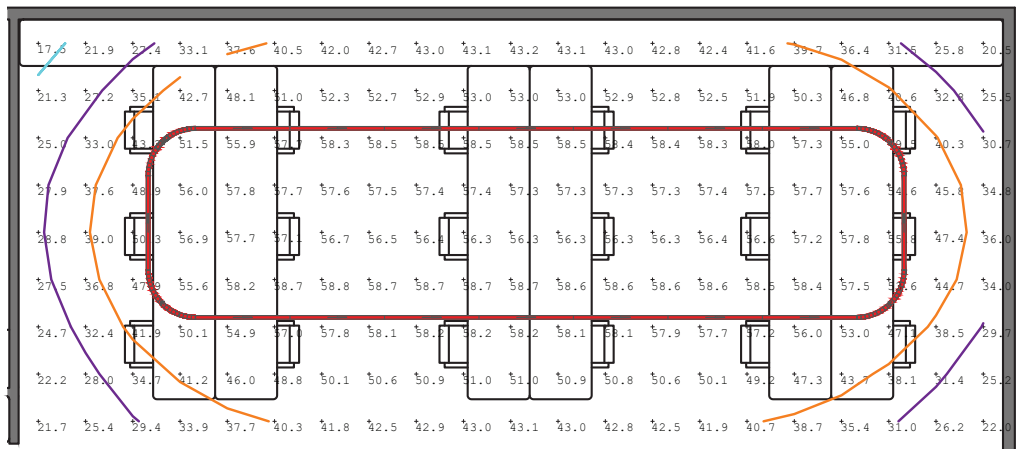
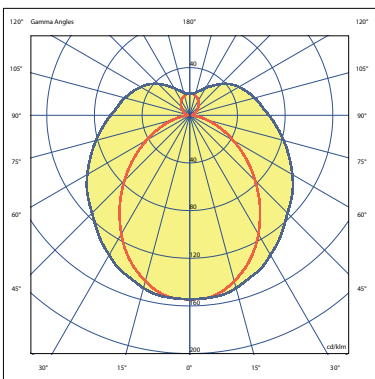
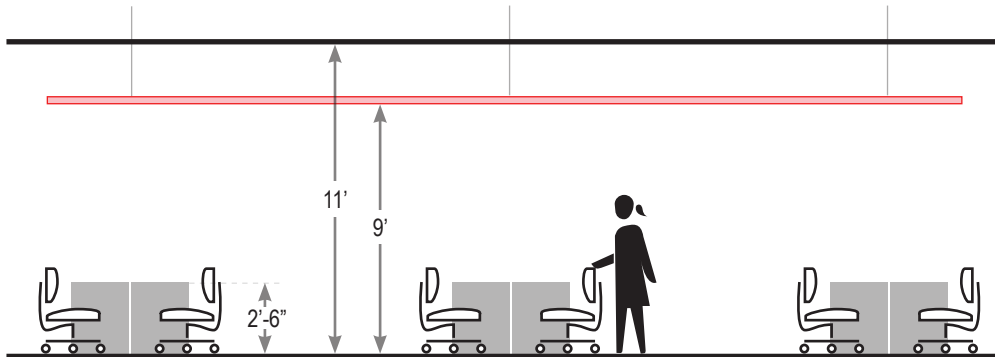
## CURVE



### EXAMPLE LAYOUT (2/2) Rectangular



- Mounting Height: **9'-0" AFF**
- Workplane Height: **2'-6" AFF**
- Suspension Length: **2'-0"**
- Fixture Specs: **2" Diameter  
600 lm/ft (6.3W/ft)  
3500K**
- Reflectances (%): **80/50/20  
Ceiling/Wall/Floor**



EXAMPLE LAYOUT Linear



EXAMPLE LAYOUT Rectangular



# HPC SOLO

CURVE



## APPLICATIONS Inspiration



# HPC SOLO

CURVE



## APPLICATIONS Inspiration



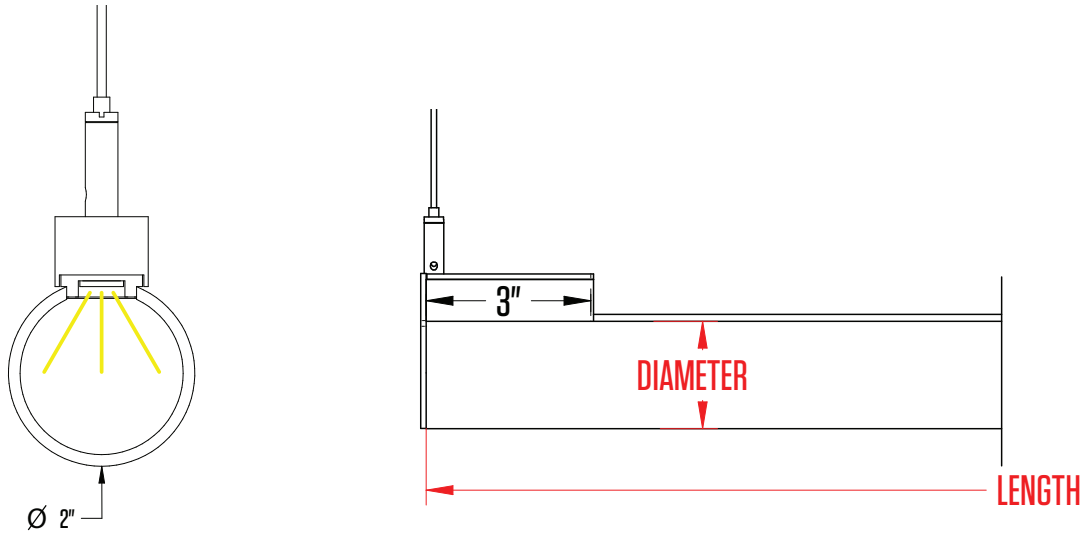


# HPC SOLO

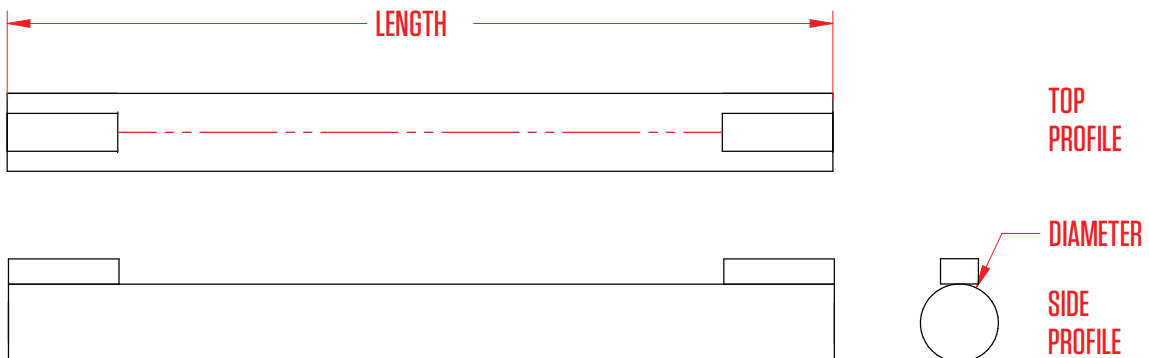
CURVE

## FIXTURE CONFIGURATIONS

### Cross Sections



### Straight Sections

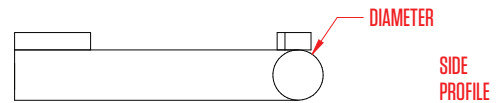
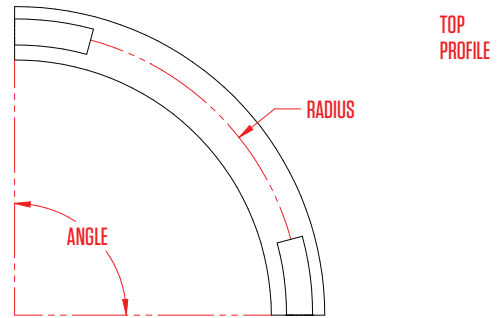
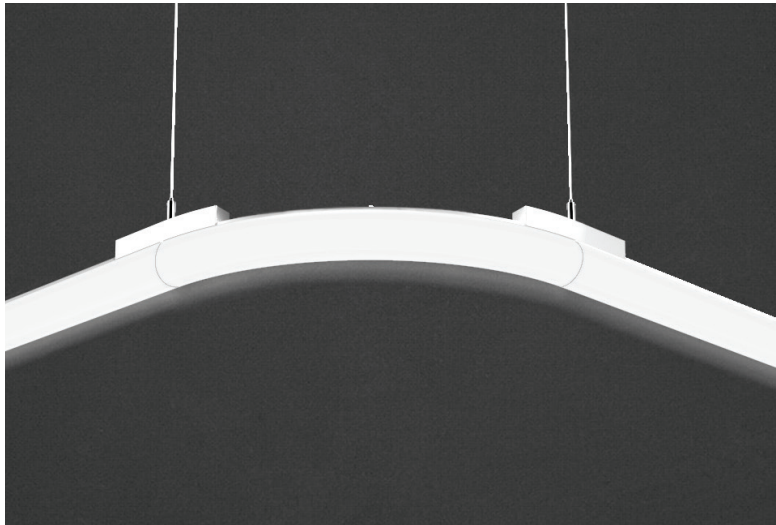


# HPC SOLO

CURVE

## AVAILABLE CONFIGURATIONS

### Curved Bends



Radius Options: 12", 18", 24", 30", 36", 42", 48"  
Angle Options: 45°, 90°, custom  
Diameter Options: 2"

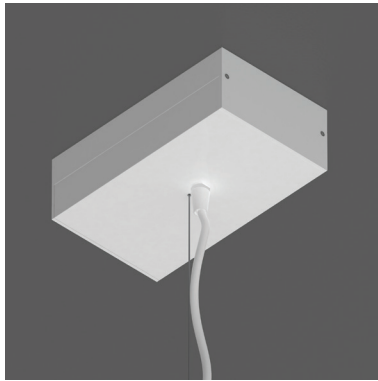
# HPC SOLO

CURVE



## SPECIFICATION DETAILS (cont.)

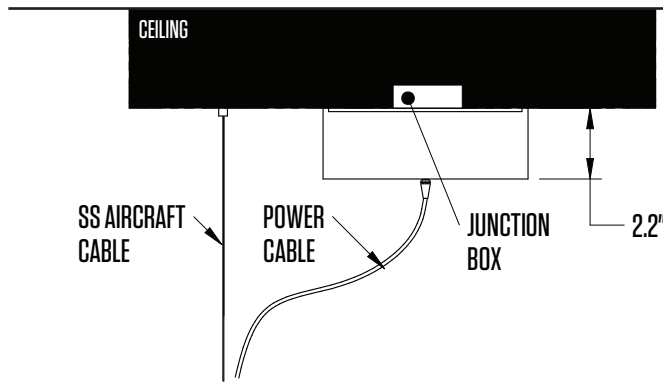
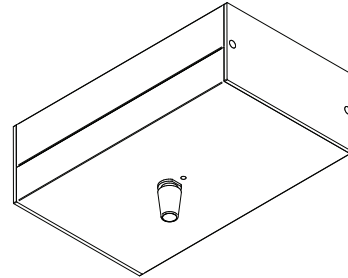
### Surface Canopy (SC)



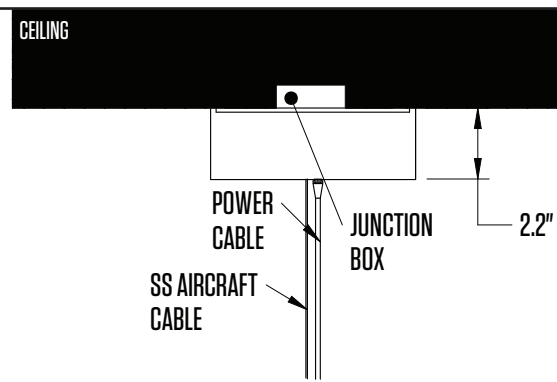
White Power Cord



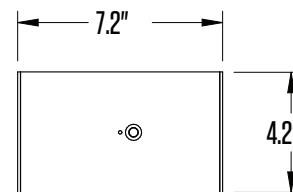
Black Power Cord



*Offset Surface Ceiling Location Mounting Side View*



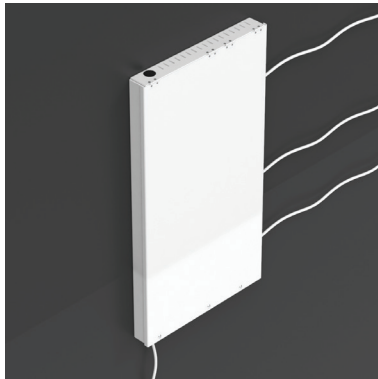
*Surface Ceiling Location Mounting Side View*



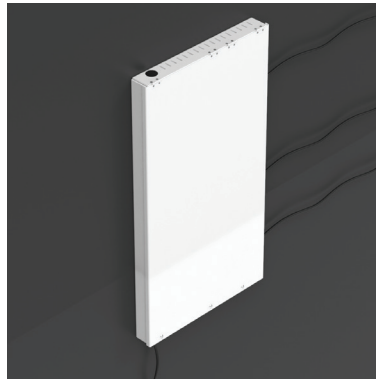
*Surface Ceiling Location Mounting Bottom View*

SPECIFICATION DETAILS (cont.)

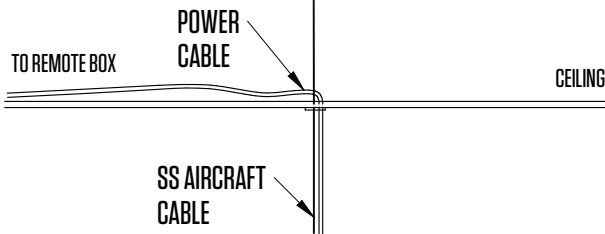
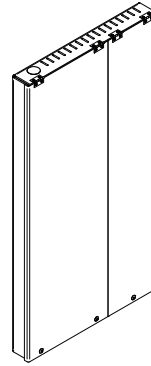
Remote Driver  
(RD)



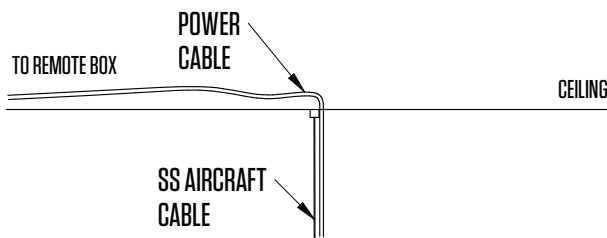
White Power Cord



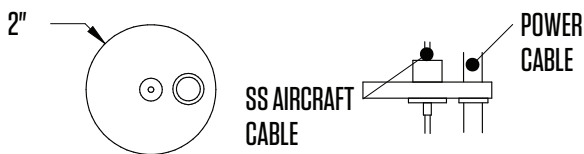
Black Power Cord



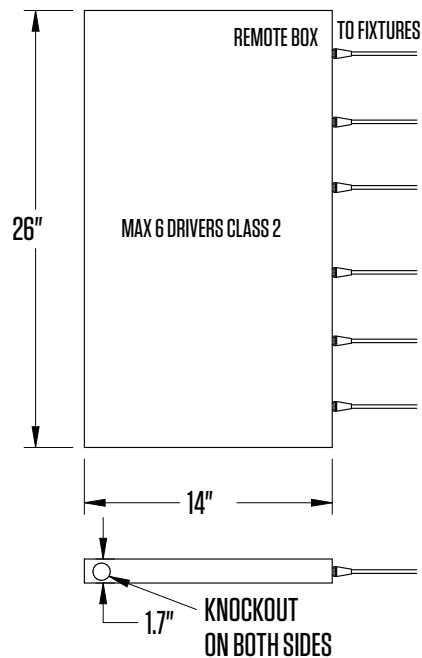
*Acoustic Ceiling Power Supply Box Mounting Side View*



*Solid Ceiling Power Supply Box Mounting Side View*



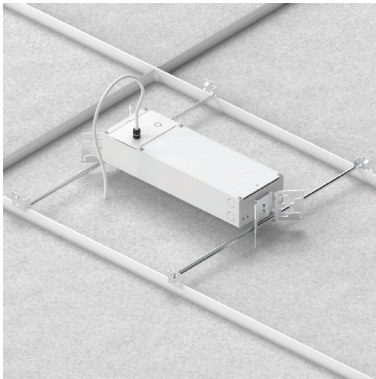
*Ceiling Finishing Plate*



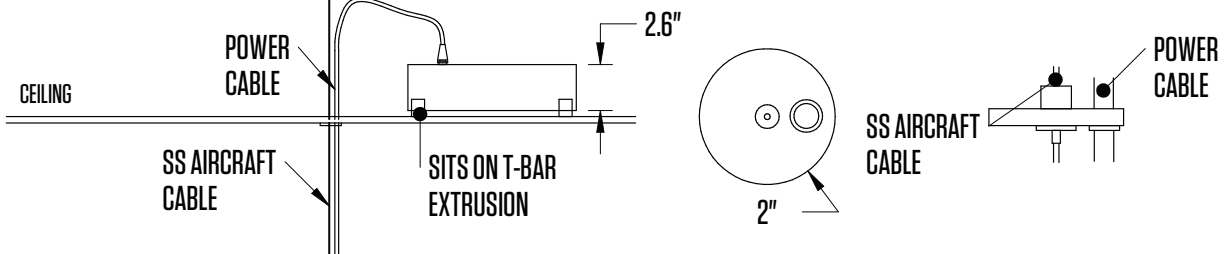
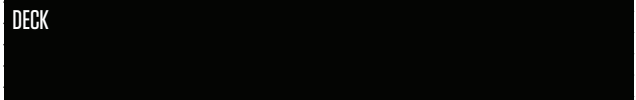
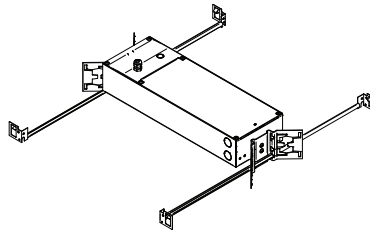
*Power Supply Box Dimensions*

SPECIFICATION DETAILS (cont.)

**ACT Remote  
Driver (AD)**

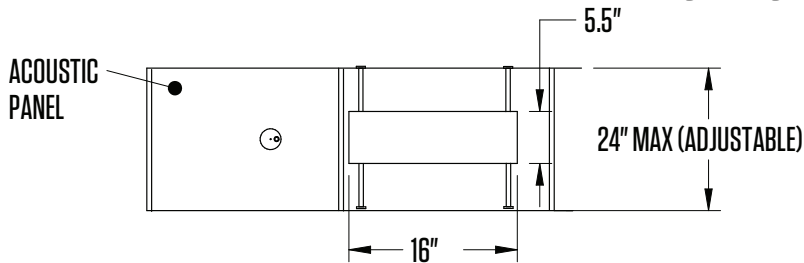


**Driver Housing**



*Above Ceiling Location Mounting Side View*

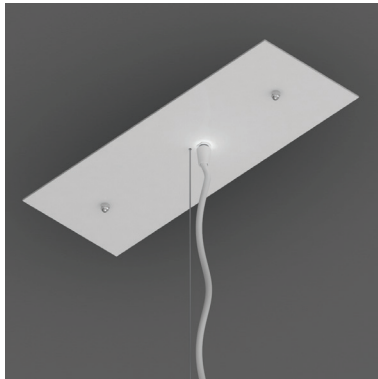
*Ceiling Finishing Plate*



*Above Ceiling Location Mounting Top View*

## SPECIFICATION DETAILS (cont.)

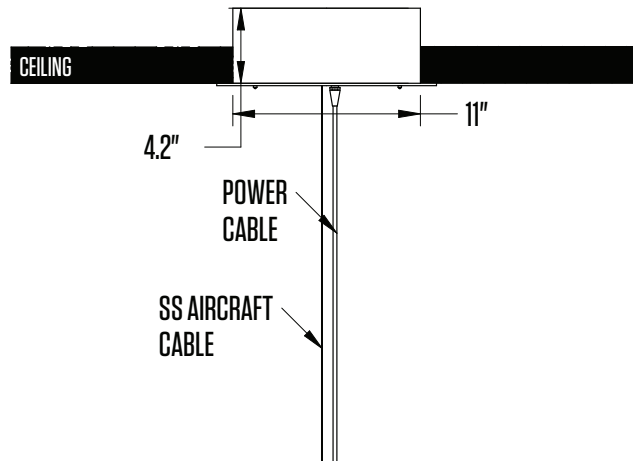
### Recessed Canopy (RC)



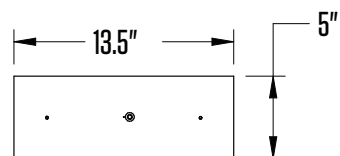
White Power Cord



Black Power Cord



*Flush Ceiling Location Mounting Side View*



*Flush Ceiling Location Mounting Bottom View*