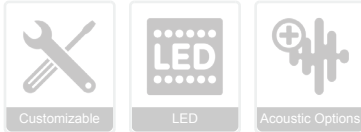
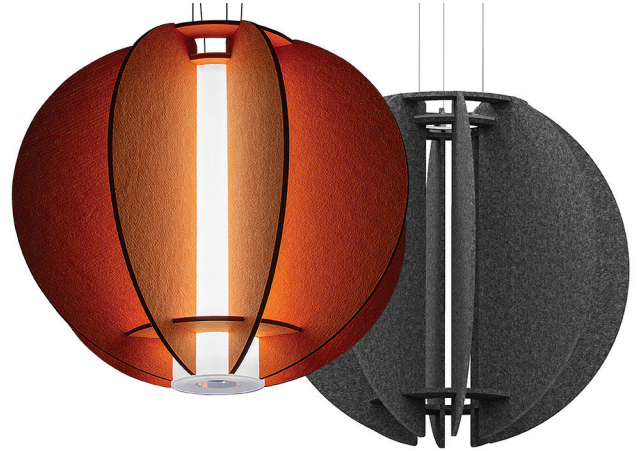




barbicanlighting

Carambola

Inspired by the organic shape of starfruit, presented in a modern geometric form, the Carambola is available in 6 sizes and 3 fin configurations, with or without lighting options. Acoustic Fixtures are a fun way to decrease ambient noise in your space. High design and function make these fixtures a beautiful and unique way to establish your own Quietude.



Please find an overall listing of all product options. Barbican specializes in producing products on a per request basis. Please feel free to use our online builder to determine conditional options, or confer with your lighting rep, or reach out to sales@barbican.ca for more information.

| Type | | # Fins | | Diameter | | Acoustic Material | | Mounting | |
|------|-----|--------|----|----------|-------------------------|------------------------|-------------|----------|---------------------------------|
| L | Lit | 4F | 4 | 13D | 13" (lit-HPC 4"D 12"H) | AR-CRT | Carrot | ACW | Aircraft Cable WHITE Power Cord |
| | U | Unlit | 8F | 8 | 28D | 28" (lit-HPC 6"D 24"H) | AR-CNF | | |
| | | 12F | 12 | 39D | 39" (lit-HPC 8"D 36"H) | AR-EBY | Ebony | ACB | Aircraft Cable BLACK Power Cord |
| | | | | 52D | 52" (lit-HPC 10"D 48"H) | AR-HTH | Heather | SM | Stem Mount |
| | | | | 64D | 64" (lit-HPC 10"D 60"H) | AR-LIN | Linen | | |
| | | | | 76D | 76" (lit-HPC 10"D 72"H) | AR-MAR | Marble | | |
| | | | | | | AR-MOS | Moss | | |
| | | | | | | AR-PRT | Peridot | | |
| | | | | | | AR-RBY | Ruby | | |
| | | | | | | AR-SFN | Saffron | | |
| | | | | | | AR-SND | Sand | | |
| | | | | | | AR-SGR | Sangria | | |
| | | | | | | AR-SEP | Sepia | | |
| | | | | | | AR-SLT | Slate | | |
| | | | | | | AR-UMR | Ultramarine | | |

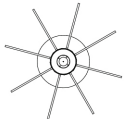
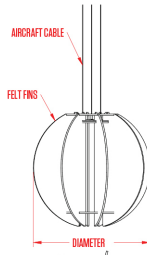
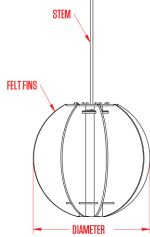
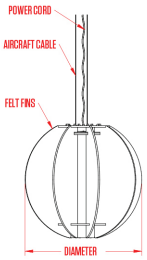
| Finish (Canopies, Stems) | | Source | | Voltage | | Temperature | |
|--------------------------|----------------------|-----------|--------------------|----------|---------------|-------------|-------------------------------|
| WHT | White | 800LM/LF | 800LM/LF (8W/LF) | 120/277V | 120/277 Volts | 2700K | 2700 °K |
| BLK | Black | 1200LM/LF | 1200LM/LF (12W/LF) | | | 3000K | 3000 °K |
| BA | Brushed Aluminum | | | | | 3500K | 3500 °K |
| RAL | RAL (North American) | | | | | 4000K | 4000 °K |
| | | | | | | CT | Colour Tuning 2700-6500 °K |

| Colour Rendering Index | | Dimming Drivers | |
|------------------------|--------|-----------------|-----------|
| 90CRI | 90 CRI | DB(0-10V) | DB(0-10V) |

Materials Choose from our large materials collection using our online product builder.

Acoustic Felt

Please visit our website to view our full material galleries



| | | |
|--|--|--|
| | <small>Barbican, 470 Central Avenue 3rd Floor, Toronto L4B 1V2 Tel: 288-8888 ext. 200, 416-363-5555, www.barbican.ca www.barbican.ca 1-800-663-5781 info@barbican.ca</small> | PRODUCT CODE: AR-100-F01 PRODUCT NAME: CARAMBOLA CONTACT: SALES@BARBICAN.CA |
| | | |
| | | |

| | | |
|--|--|--|
| | <small>Barbican, 470 Central Avenue 3rd Floor, Toronto L4B 1V2 Tel: 288-8888 ext. 200, 416-363-5555, www.barbican.ca www.barbican.ca 1-800-663-5781 info@barbican.ca</small> | PRODUCT CODE: AR-100-F01 PRODUCT NAME: CARAMBOLA CONTACT: SALES@BARBICAN.CA |
| | | |
| | | |



ACOUSTIC FELT Colour Samples



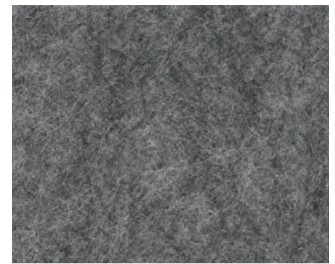
Carrot
AR-CRT



Cornflower
AR-CNF



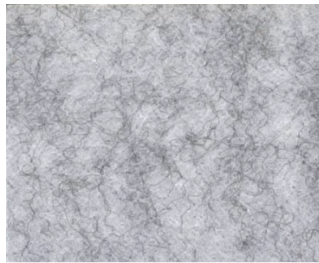
Ebony
AR-EBY



Heather
AR-HTH



Linen
AR-LIN



Marble
AR-MAR



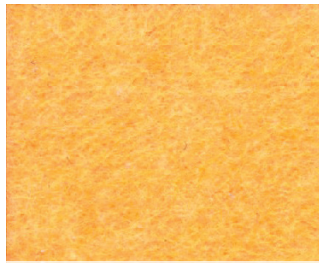
Moss
AR-MOS



Peridot
AR-PRT



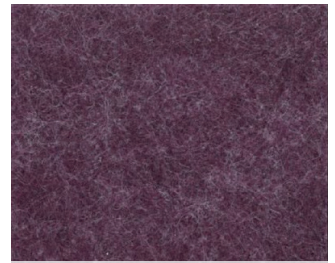
Ruby
AR-RBY



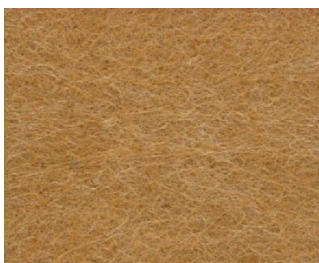
Saffron
AR-SFN



Sand
AR-SND



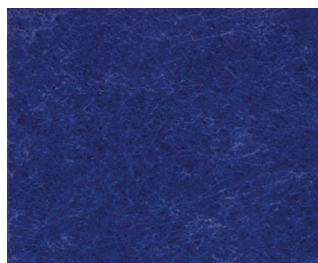
Sangria
AR-SGR



Sepia
AR-SEP



Slate
AR-SLT



Ultramarine
AR-UMR