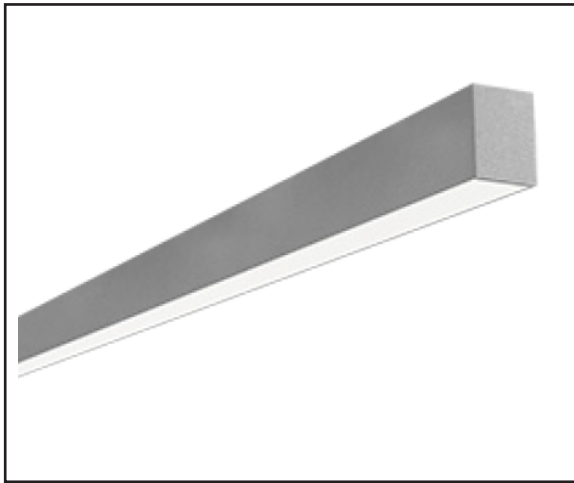


MEF24DA

2.75"x4.875" Designer LED Suspended Direct Aluminum



PRODUCT SPECIFICATIONS

DESCRIPTION

The MEF24DA Series is an architecturally designed Suspended Direct Aluminum LED Luminaire that is classically styled and fit for any interior. It is available for continuous run mounting.

APPLICATIONS

The MEF24DA Series of Suspended Direct Aluminum Luminaires were designed to be high quality, energy efficient LED fixtures for use in commercial applications, offices, hotel lobbies, museums, government facilities, schools, and public areas.

CONSTRUCTION

Our MEF24DA is constructed of a 2.75" wide aluminum body. The fixture is available in any run length within 1' increments. Heavy duty housing crimped along sides for extra rigidity and straight alignment.

OPTICAL SYSTEM

High output LED's available in 3000K, 3500K, 4000K, and 5000K. CRI >82. Linear ribbed acrylic lens. White polyester polymer finish with a high reflectivity.

ELECTRICAL SYSTEM

Electronic drivers are available for 120/277V applications. Long-life LED system rated for >50K life hours (L70 @ 25°C). Metal gear tray for internal LED driver. Complies with federal energy efficiency standards.

ACI BHB;

This fixture is designed to be suspended. Continuous run available.

@GHB; G

Independently tested to IESNA LM-79 and LM-80 specifications. UL and cUL Listed.

K 5 FF 5 BHM

5-Year Limited Warranty. Complete warranty and terms located at www.aelnow.com/warranty.

ORDERING INFORMATION

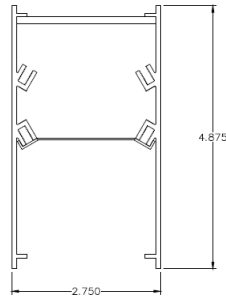
Example: MEF24DA35MSMW4

Options: 12EBL

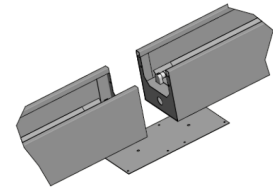
| SERIES | COLOR TEMP DOWN | | OUTPUT DOWN | | LENS | | VOLTAGE | | FINISH | |
|---------|-----------------|-------|-------------|---------------|------|-------|---------|----------------------|--------|---------|
| MEF24DA | 30 | 3000K | S | Standard | S | Satin | M | 120/277 (Multi-Volt) | W | White |
| | 35 | 3500K | HS | High Standard | | | | | SP | Special |
| | 40 | 4000K | M | Medium | | | | | | |
| | 50 | 5000K | HM | High Medium | | | | | | |

| ROW LENGTH | | OPTIONS | | HANGING OPTIONS | | WIRING HARNESS | |
|------------|---------|---------|------------------------------|-----------------|--|----------------|---------------|
| 2 | 2 Feet | 12EBL | 1200 Lumen Emergency Ballast | CP50 | Cord Pendant (No Power Feed) 50' | WH34 | 3-Wire 4 Feet |
| 3 | 3 Feet | FW | Flex Whip Cable 6' | CP100 | Cord Pendant (No Power Feed) 100' | WH44 | 4-Wire 4 Feet |
| 4 | 4 Feet | | | CPPF50 | Cord Pendant (Power Feed Capable) 50' | WH54 | 5-Wire 4 Feet |
| 5 | 5 Feet | | | CPPF100 | Cord Pendant (Power Feed Capable) 100' | WH38 | 3-Wire 8 Feet |
| 6 | 6 Feet | | | RPXX | Rigid Pendant (Power Feed Capable) - Specify Length (XX) | WH48 | 4-Wire 8 Feet |
| 7 | 7 Feet | | | CPY100 | Cord Pendant (No Power Feed) 100' Y-Hanger | WH58 | 5-Wire 8 Feet |
| 8 | 8 Feet | | | CPPFY100 | Cord Pendant (Power Feed Capable) 100' Y-Hanger | | |
| XX | XX Feet | | | | | | |

FIXTURE DIMENSIONS



For Continuous Run Mounts:

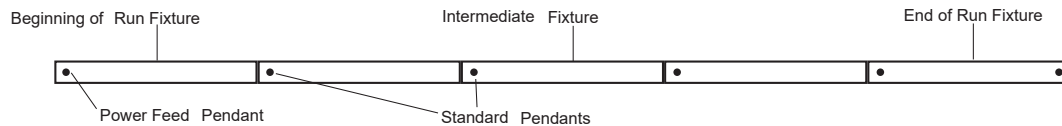


ROW CONFIGURATIONS

AEL would like to double check your Bill of Material upon placement of your order if the number of rows and their individual row lengths are provided on the purchase order as follows:

Row 1 - 8' Row 2 - 8' Row 3 - 20' Row 4 - 20'

*Please provide any additional pertinent information such as additional power drops required mid-row.



| Row Length | 2' | 4' | 6' | 8' | 10' | 12' | 14' | 16' | 18' | 20' | 22' | 24' | 26' | 28' | 30' | 32' | 34' | 36' | 38' | 40' | 42' | 44' | 46' | 48' | |
|-----------------------|----|----|----|----|-----|-----|-----|-----|-----|-----|-----|-----|-----|-----|-----|-----|-----|-----|-----|-----|-----|-----|-----|-----|---|
| 2' | 1 | | 1 | | 1 | | 1 | | 1 | | 1 | | 1 | | 1 | | 1 | | 1 | | 1 | | 1 | | 1 |
| 4' | | 1 | 1 | | 1 | 1 | | | 1 | 1 | | | | 1 | 1 | | | 1 | 1 | | | | 1 | 1 | |
| 8' | | | | 1 | 1 | 1 | 1 | 2 | 2 | 2 | 2 | 3 | 3 | 3 | 3 | 4 | 4 | 4 | 4 | 5 | 5 | 5 | 5 | 6 | |
| Total Pendants Needed | 2 | 2 | 3 | 2 | 3 | 3 | 4 | 3 | 4 | 4 | 5 | 4 | 5 | 5 | 6 | 5 | 6 | 6 | 7 | 6 | 7 | 7 | 8 | 7 | |

LED SYSTEM DATA

| Output | Delivered Lumens Per Foot | System Wattage Per Foot | CRI | LPW |
|---------------|---------------------------|-------------------------|-----|-----|
| Standard | 506 Lm/Ft | 3.3 | 82 | 148 |
| Medium | 709 Lm/Ft | 5.1 | 82 | 139 |
| High Standard | 965 Lm/Ft | 6.9 | 82 | 140 |
| High Medium | 1,468 Lm/Ft | 10.3 | 82 | 143 |

Additional Lumen options available add desired lumens to end of part #
e.g. MEF24DA40MSMW43500

ENERGY AND PERFORMANCE DATA

| | |
|--------------------------|--------------------------------------|
| Input Voltage | 120/277 VAC |
| Standard Dimming Control | 0-10V |
| CCT | 3000, 3500, 4000, 5000 Kelvin |
| CRI | 82 (minimum) |
| Life Time Rating | 100,000 hrs at L70 |
| Input Frequency | 50/60Hz |
| Power Factor | >0.9 |
| Operating Temp | Low Ambient -20°C/ High Ambient 50°C |

Quick reference Output Guide Standard

| Length | Lumens | Wattage |
|--------|--------|---------|
| 2 Foot | 1012 | 6.6 |
| 3 Foot | 1518 | 9.9 |
| 4 Foot | 2024 | 13.2 |
| 6 Foot | 3036 | 19.8 |
| 8 Foot | 4048 | 26.4 |

Quick reference Output Guide Medium

| Length | Lumens | Wattage |
|--------|--------|---------|
| 2 Foot | 1418 | 10.2 |
| 3 Foot | 2127 | 15.3 |
| 4 Foot | 2836 | 20.4 |
| 6 Foot | 4254 | 30.6 |
| 8 Foot | 5672 | 40.8 |

Quick reference Output Guide High Standard

| Length | Lumens | Wattage |
|--------|--------|---------|
| 2 Foot | 1930 | 13.8 |
| 3 Foot | 2895 | 20.7 |
| 4 Foot | 3860 | 27.6 |
| 6 Foot | 5790 | 41.4 |
| 8 Foot | 7720 | 55.2 |

Quick reference Output Guide High Medium

| Length | Lumens | Wattage |
|--------|--------|---------|
| 2 Foot | 2936 | 20.6 |
| 3 Foot | 4404 | 30.9 |
| 4 Foot | 5872 | 41.2 |
| 6 Foot | 8808 | 61.8 |
| 8 Foot | 11744 | 82.4 |