

LWV35

LED Wall / Vanity



STANDARD

OPTIONAL



PRODUCT SPECIFICATIONS

DESCRIPTION

The LWV35 Series is an LED Wall/Vanity fixture available in 1 or 2 lamp configurations. It is available with multiple lens and finish options.

APPLICATIONS

The LWV35 Series of LED wall/Vanity fixtures were designed to be high quality, energy efficient LED fixtures for use in wall or ceiling corridors, stairwells and bathrooms.

CONSTRUCTION

The fixture is constructed of a structurally embossed, heavy gauge, cold rolled steel.

OPTICAL SYSTEM

White pre-painted polyester polymer finish with a high reflectivity.

ELECTRICAL SYSTEM

Standard 120-277V, 0-10V dimming, 50-60 Hz operation. Sound rated A. Thermally protected. Automatic resetting Class P. High Power Factor. Non PCB.

MOUNTING

Units are designed for surface mounting on either a wall or ceiling.

LISTINGS

UL and cUL Listed. Damp location rated.

WARRANTY

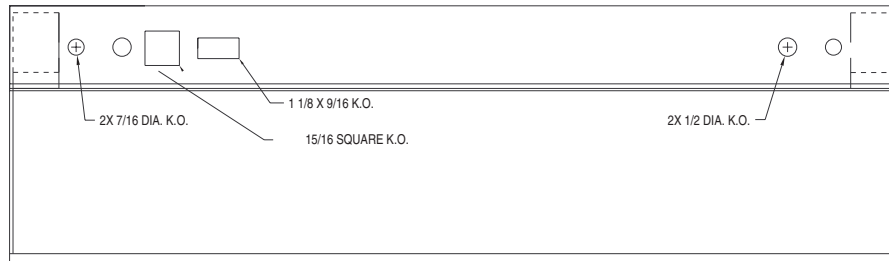
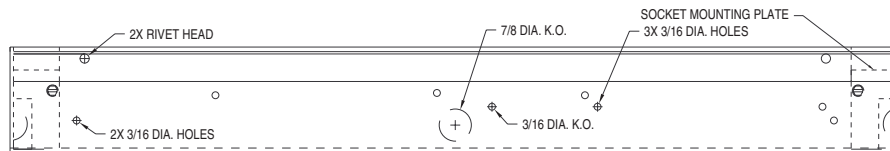
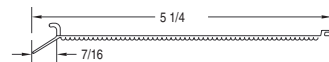
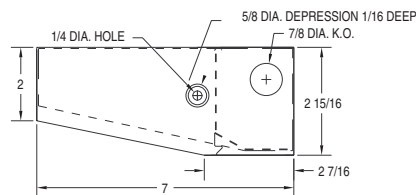
5-Year Limited Warranty. Complete warranty and terms located at www.aelnow.com/warranty.

ORDERING INFORMATION

Example: LWV3530SCPMW
 Emergency Option: 12EBL
 Pull Chain Option: PC
 Outlet Option: CO
 Tamper Option: TPS

SERIES	COLOR TEMP	OUTPUT	DIFFUSER	VOLTAGE	COLOR	LENGTH
LWV35	30	3000K	SL Standard Low	CP Clear Prismatic SW Smooth White	M Multi-Volt (120-277VAC)	2 2' (24 1/4")
	35	3500K	ML Medium Low			4 4' (48 1/4")
	40	4000K	HL High Low	W White C Chrome SP Custom		
	50	5000K	SM Standard Medium			
			MM Medium Medium			
			HM High Medium			
			SH Standard High			
			MH Medium High			
		HH High High				

EMERGENCY OPTIONS	PULL CHAIN	OUTLET OPTIONS	TAMPER-PROOF OPTIONS
12EBL 90-Minute, 1200 Lumen Emergency	PC Pull Chain PC3 3 Step Pull Chain	CO Convenience Outlet	TPS Tamper-Proof Screws TPSD Tamper-Proof Screwdriver

FIXTURE DIMENSIONS

TOP - WITHOUT LENS

FRONT

LENS

SNAP-IN LINEAR PRISMATIC ACRYLIC

Output	Delivered Lumens	System Wattage	L70 @20C (hrs)
SL	4650	33	>100K
ML	7974	57	>100K
HL	11150	80	>100K
SM	12040	86	>100K
MM	13016	93	>100K
HM	15728	112	>100K
SH	16500	118	>100K
MH	20000	143	>100K
HH	25000	179	>100K

Approximate Color Temperature Multiplier	
5000K	1.03
4000K	1
3500K	0.97
3000K	0.94
2700K	0.91

ENERGY AND PERFORMANCE DATA

Input Voltage	120/277VAC
System Input Power	33 - 179 Watts*
Delivered Lumen Output	4650 - 25000 Lumens
Standard Dimming Control	0-10V
CCT	3000, 3500, 4000, 5000 Kelvin
CRI	82 (minimum)
Life Time Rating	>100,000 hrs @ L70
Input Frequency	50/60 Hz
Power Factor	>0.9
Operating Temp	30° to 50° C

*Actual wattage may differ by ±5% while operating 120/277V ±10%