

## LMWHB

Mini Wash Down  
LED High Bay Luminaire



**IP67**  
CERTIFIED

**IP66**  
CERTIFIED

### PRODUCT SPECIFICATIONS

#### DESCRIPTION

The LMWHB Series is an IP Rated Mini Wash Down LED High Bay luminaire. It is compact for tight areas and boasts a gasketed enclosure that is completely dust and moisture resistant. The LMWHB utilizes state-of-the-art LED technology to deliver the highest possible efficiency in the lighting industry.

#### APPLICATIONS

The LMWHB Series of Wash Down LED High Bays were designed to be high quality, energy efficient fixtures for use in food processing facilities, kitchens, parking garages, canopy, stairwells, car washes, government facilities, schools, public areas and industrial facilities. Suitable for both indoor and outdoor applications.

#### CONSTRUCTION

The fixture is constructed of a single-piece UL 5VA fiberglass body and a high impact acrylic or polycarbonate diffuser securely positioned with a permanent, poured-in-place; polyurethane sealing gasket. The diffuser and upper components are locked in place and sealed tightly with captive retaining latches.

#### OPTICAL SYSTEM

White polyester polymer finish reflector with a minimum 93% reflectivity. Frosted and clear high impact acrylic or polycarbonate lenses are available. Clear acrylic transmission: 93%, frosted acrylic transmission 88%. Clear polycarbonate transmission 89%, frosted polycarbonate transmission 82%.

#### ELECTRICAL SYSTEM

Electronic drivers are available for 120/277V applications. Long-life LED system rated for >100K life hours (L70 @ 45°C). 2 Rows of LEDs standard. 3 row and 4 row options are available. Complies with federal energy efficiency standards. 0-10V dimming standard.

#### MOUNTING

The fixture can be suspended or surface mounted. 316 stainless steel mounting bracket included standard. V-Hook and flexible ceiling mount mounting accessories are available.

#### LISTINGS

UL and cUL Listed. CSA approved. NSF International Certified. IP66 and IP67 Certified for Wet Location applications. NEMA 4X. Manufactured in the USA, BAA compliant.

#### WARRANTY

5-Year Limited Warranty. Complete warranty and terms located at [www.aelnow.com/warranty](http://www.aelnow.com/warranty).

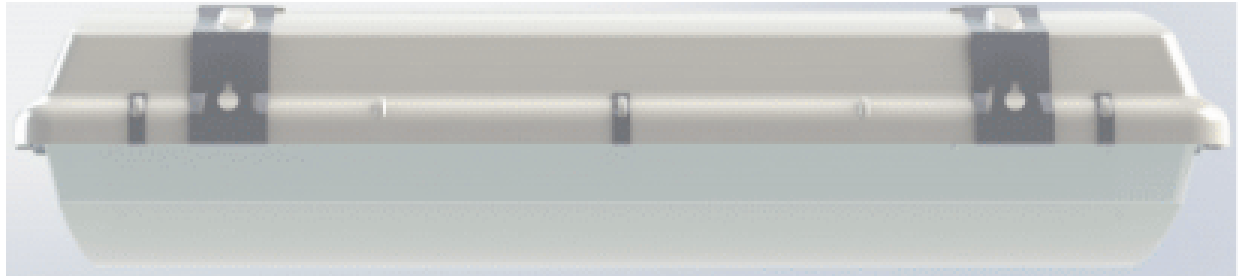


### ORDERING INFORMATION

Example: LMWHB-40-S-CA-M

Custom Lumen Output: LMWHB-40-S-CA-M-5000 for 5000 lumens

SERIES	CCT	OUTPUT	LENS	VOLTAGE	DRIVER OPTIONS	OPTIONS
LMWHB	30	3000K	S Standard	M 120/277V	Blank	12EBL
	35	3500K	M Medium		CD1	WS
	40	4000K	H High		CD5	VHOOK
	50	5000K			EDN	FCM
			CA Clear Acrylic		DALI	RMB
			FA Frosted Acrylic		LDE1	SCS
			CP Clear Polycarbonate			90
			FP Frosted Polycarbonate			3LED
						4LED

**LINE ART**

**Compact Size**

- **26.6" Long**
- **14.5" Wide**
- **5.8" Deep**

**LED SYSTEM DATA**
**ENERGY AND PERFORMANCE DATA**

Input Voltage	120/277VAC
System Input Power	51.6, 64.5, and 90.3 Watts*
Delivered Lumen Output per ft	8,000- 14,000 Lumens
Standard Dimming Control	0-10V Dimming
CCT	3000, 3500, 4000, 5000 Kelvin
CRI	82 (minimum)
Life Time Rating	100,000 hrs @ L70
Input Frequency	50/60 Hz
Power Factor	>0.9
Operating Temp	-30° to 50° C

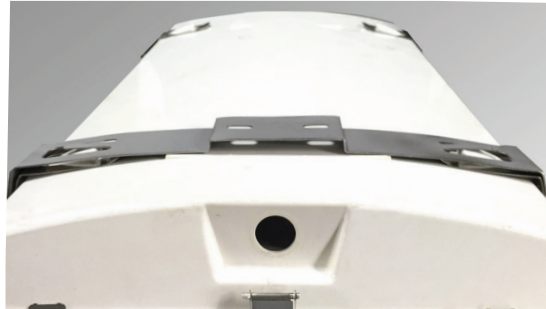
\*Actual wattage may differ by ±5% while operating 120/277V ±10%

**LED SYSTEM DATA**

Output	Delivered Lumens	System Wattage	L70 @ 45°C (hrs)	Amperage Draw	
				120V	277V
Standard	8000	51.6	>100K	.43A	.19A
Medium	10000	64.5	>100K	.54A	.23A
High	14000	90.3	>100K	.75A	.33A

**MOUNTING ACCESSORIES**

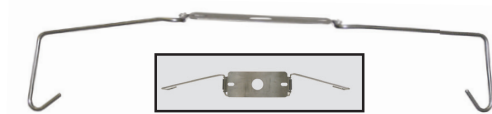
Surface Mount Bracket  
(included standard)



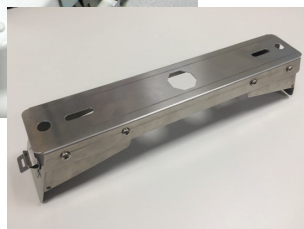
VOOK



FCM



RMB



SCS

