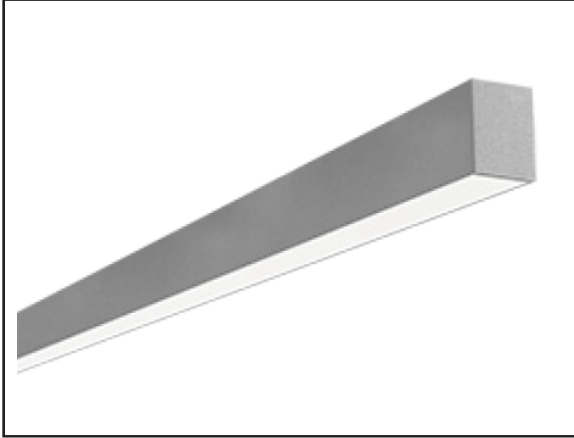


## LDL6WIS

6" x 6" Wall Mount Indirect Steel Linear Luminaire



STANDARD

OPTIONAL



### ORDERING INFORMATION

Example: LDLW6IS40MSMW4

Options: 12EBL

### PRODUCT SPECIFICATIONS

#### **DESCRIPTION:**

The LDL6WIS is an architecturally designed Wall Mount Indirect Steel LED Luminaire that is classically styled and fit for any interior. It is available for continuous run mounting.

#### **APPLICATIONS:**

The LDL6WIS of LED Luminaires are designed to be high quality, energy efficient fixtures for use in commercial applications, offices, hotel lobbies, museums, government facilities, schools, and public areas.

#### **CONSTRUCTION:**

The fixture is constructed of a 6" wide heavy gauge steel body. The LDL6WIS is available in any run length withing 1' increments. Heavy duty housing crimped along sides for extra rigidity and straight alignment.

#### **OPTICAL SYSTEM:**

High output LED's available in 3000K, 3500K, 4000K, and 5000K. CRI>82. Linear ribbed acrylic lens. White polyester polymer finish with a high reflectivity.

#### **ELECTRICAL SYSTEM:**

Electronic drivers are available for 120/277V applications. Long-life LED system rated for >50,000 life hours (L70@25°C). Metal gear tray for internal LED driver. Complies with Federal Energy Efficiency Standards.

#### **MOUNTING:**

This fixture is designed to be wall mounted. Continuous run available.

#### **LISTINGS:**

Independently tested to IESNA LM-79 and LM-80 specifications. UL and cUL Listed.

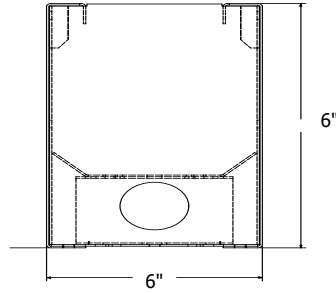
#### **WARRANTY:**

5-Year Limited Warranty. Complete warranty and terms located at <http://www.AELnow.com/resources>

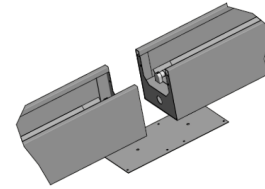
SERIES	COLOR TEMP		OUTPUT		LENS	
LDL6WIS	30	3000K	S	Standard	S	Satin
	35	3500K	HS	High Standard		
	40	4000K	M	Medium		
	50	5000K	HM	High Medium		

VOLTAGE		FINISH		ROW LENGTH		OPTIONS		WIRING HARNESS	
M	120/277 (Multi-Volt)	W	White	2	2 Feet	12EBL	1200 Lumen Emergency Ballast	WH34	3-Wire 4 Feet
			SP	Special	3		3 Feet	FW	Flex Whip Cable 6'
				4	4 Feet			WH54	5-Wire 4 Feet
				5	5 Feet			WH38	3-Wire 8 Feet
				6	6 Feet			WH48	4-Wire 8 Feet
				7	7 Feet			WH58	5-Wire 8 Feet
				8	8 Feet				
				XX	XX Feet				

**FIXTURE DIMENSIONS**



*For Continuous Run Mounts:*

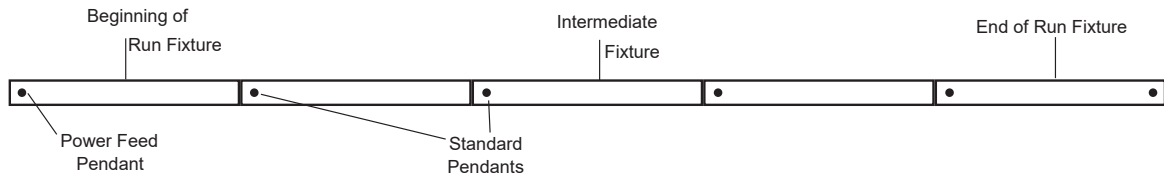


**ROW CONFIGURATIONS**

AEL would like to double check your Bill of Material upon placement of your order if the number of rows and their individual row lengths are provided on the purchase order as follows:

Row 1 - 8'                      Row 2 - 8'                      Row 3 - 24'                      Row 4 - 24'

Please provide any additional pertinent information such as additional power drops required mid-row.



Row Length	2'	4'	6'	8'	10'	12'	14'	16'	18'	20'	22'	24'	26'	28'	30'	32'	34'	36'	38'	40'	42'	44'	46'	48'	
2'	1		1		1		1		1		1		1		1		1		1		1		1		1
4'		1	1			1	1			1	1			1	1			1	1				1	1	
8'				1	1	1	1	2	2	2	2	3	3	3	3	4	4	4	4	4	5	5	5	5	6
Total Pendants Needed	2	2	3	2	3	3	4	3	4	4	5	4	5	5	6	5	6	6	7	6	7	7	8	7	

**LED SYSTEM DATA**

Output	Delivered Lumens Per Foot	System Wattage Per Foot	CRI	LPW
Standard	506 Lm/Ft	3.3	82	148
Medium	709 Lm/Ft	5.1	82	139
High Standard	965 Lm/Ft	6.9	82	140
High Medium	1,468 Lm/Ft	10.3	82	143

**ENERGY AND PERFORMANCE DATA**

Input Voltage	120/277 VAC
Standard Dimming Control	0-10V
CCT	3000, 3500, 4000, 5000 Kelvin
CRI	82 (minimum)
Life Time Rating	100,000 hrs at L70
Input Frequency	50/60Hz
Power Factor	>0.9
Operating Temp	Low Ambient -20°C/ High Ambient 50°C

Additional Lumen options available add desired lumens to end of part #  
e.g. LDL6WIS40MSMW43500

Length	Lumens	Wattage
2 Foot	1012	6.6
3 Foot	1518	9.9
4 Foot	2024	13.2
6 Foot	3036	19.8
8 Foot	4048	26.4

Length	Lumens	Wattage
2 Foot	1418	10.2
3 Foot	2127	15.3
4 Foot	2836	20.4
6 Foot	4254	30.6
8 Foot	5672	40.8

Length	Lumens	Wattage
2 Foot	1930	13.8
3 Foot	2895	20.7
4 Foot	3860	27.6
6 Foot	5790	41.4
8 Foot	7720	55.2

Length	Lumens	Wattage
2 Foot	2936	20.6
3 Foot	4404	30.9
4 Foot	5872	41.2
6 Foot	8808	61.8
8 Foot	11744	82.4