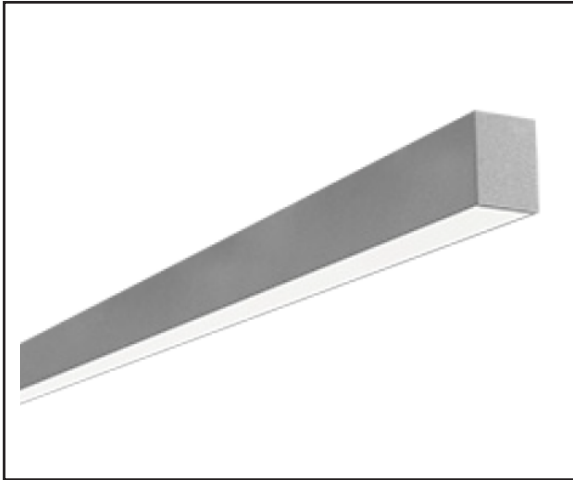




Catalog Number
Project
Type

LDL6DS

6" Designer LED Suspended Direct Steel Luminaire



STANDARD

OPTIONAL



ORDERING INFORMATION

Example: LDL6DSS35MSMW4

Options: 12EBL

PRODUCT SPECIFICATIONS

DESCRIPTION

The LDL6DS Series is an architecturally designed Suspended Direct Steel LED Luminaire that is classically styled and fit for any interior. It is available for continuous run mounting.

APPLICATIONS

The LDL6DS Series of Suspended Direct Steel luminaires are designed to be high quality, energy efficient LED fixtures for use in commercial applications, offices, hotel lobbies, museums, government facilities, schools, and public areas.

CONSTRUCTION

Our LDL6DS is constructed of a 6" wide heavy gauge steel body. The fixture is available in any run length within 1' increments. Heavy duty housing crimped along sides for extra rigidity and straight alignment. White polyester polymer finish with a high reflectivity.

OPTICAL SYSTEM

High output LED's available in 3000K, 3500K, 4000K, and 5000K. CRI >82. Satin lens provides for a beautiful architectural design while maintaining optimal light output.

ELECTRICAL SYSTEM

Electronic drivers are available for 120/277V applications. Long-life LED system rated for >100K life hours (L70 @ 25°C). Metal gear tray for internal LED driver. Complies with federal energy efficiency standards.

MOUNTING

This fixture is designed to be suspended. Continuous run available.

LISTINGS

Independently tested to IESNA LM-79 and LM-80 specifications. UL and cUL Listed.

WARRANTY

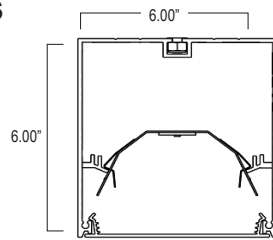
5-Year Limited Warranty. Complete warranty and terms located at www.aelnow.com/warranty.

SERIES	COLOR TEMP		OUTPUT		LENS		VOLTAGE		FINISH	
LDL6DS	30	3000K	S	Standard	S	Satin	M	120/277 (Multi-Volt)	W	White
	35	3500K	HS	High Standard						
	40	4000K	M	Medium						
	50	5000K	HM	High Medium						
									SP	Special

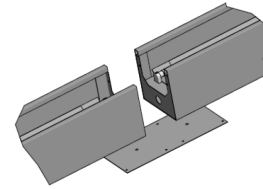
For optional lumen packages, please add the desired lumens to the end of the part number

ROW LENGTH		OPTIONS		HANGING OPTIONS			WIRING HARNESS	
2	2 Feet	12EBL	1200 Lumen Emergency Ballast	CP50	Cord Pendant (No Power Feed) 50'		WH34	3-Wire 4 Feet
3	3 Feet	FW	Flex Whip Cable 6'	CP100	Cord Pendant (No Power Feed) 100'		WH44	4-Wire 4 Feet
4	4 Feet			CPPF50	Cord Pendant (Power Feed Capable) 50'		WH54	5-Wire 4 Feet
5	5 Feet			CPPF100	Cord Pendant (Power Feed Capable) 100'		WH38	3-Wire 8 Feet
6	6 Feet			RPXX	Rigid Pendant (Power Feed Capable) - Specify Length (XX)		WH48	4-Wire 8 Feet
7	7 Feet			CPY100	Cord Pendant (No Power Feed) 100' Y-Hanger		WH58	5-Wire 8 Feet
8	8 Feet			CPPFY100	Cord Pendant (Power Feed Capable) 100' Y-Hanger			
XX	XX Feet							

FIXTURE DIMENSIONS



For Continuous Run Mounts:

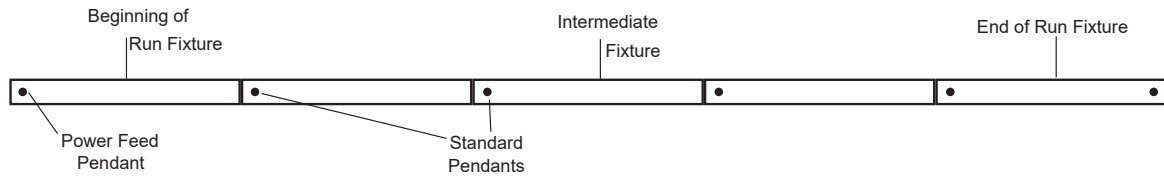


ROW CONFIGURATIONS

AEL would like to double check your Bill of Material upon placement of your order if the number of rows and their individual row lengths are provided on the purchase order as follows:

Row 1 - 8' Row 2 - 8' Row 3 - 24' Row 4 - 24'

Please provide any additional pertinent information such as additional power drops required mid-row.



Row Length	2'	4'	6'	8'	10'	12'	14'	16'	18'	20'	22'	24'	26'	28'	30'	32'	34'	36'	38'	40'	42'	44'	46'	48'
2'	1		1		1		1		1		1		1		1		1		1		1		1	
4'		1	1			1	1			1	1			1	1			1	1			1	1	
8'				1	1	1	1	2	2	2	2	3	3	3	3	4	4	4	4	5	5	5	5	6
Total Pendants Needed	2	2	3	2	3	3	4	3	4	4	5	4	5	5	6	5	6	6	7	6	7	7	8	7

LED SYSTEM DATA

Output	Delivered Lumens Per Foot	System Wattage Per Foot	CRI	LPW
Standard	506 Lm/Ft	3.3	82	148
Medium	709 Lm/Ft	5.1	82	139
High Standard	965 Lm/Ft	6.9	82	140
High Medium	1,468 Lm/Ft	10.3	82	143

ENERGY AND PERFORMANCE DATA

Input Voltage	120/277 VAC
CRI	82 (minimum)
Standard Dimming Control	0-10V
CCT	3000, 3500, 4000, 5000 Kelvin
Life Time Rating	100,000 hrs at L70
Input Frequency	50/60Hz
Power Factor	>0.9
Operating Temp	Low Ambient -20°C/ High Ambient 50°C

Additional Lumen options available add desired lumens to end of part #
e.g. LDL6DS40MSMW43500

Quick reference Output Guide Standard

Length	Lumens	Wattage
2 Foot	1012	6.6
3 Foot	1518	9.9
4 Foot	2024	13.2
6 Foot	3036	19.8
8 Foot	4048	26.4

Quick reference Output Guide Medium

Length	Lumens	Wattage
2 Foot	1418	10.2
3 Foot	2127	15.3
4 Foot	2836	20.4
6 Foot	4254	30.6
8 Foot	5672	40.8

Quick reference Output Guide High Standard

Length	Lumens	Wattage
2 Foot	1930	13.8
3 Foot	2895	20.7
4 Foot	3860	27.6
6 Foot	5790	41.4
8 Foot	7720	55.2

Quick reference Output Guide High Medium

Length	Lumens	Wattage
2 Foot	2936	20.6
3 Foot	4404	30.9
4 Foot	5872	41.2
6 Foot	8808	61.8
8 Foot	11744	82.4