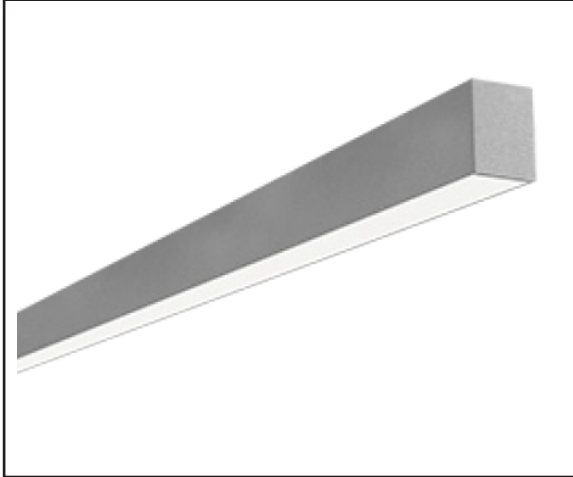


Catalog Number
Project
Type

LDL5DS

5" Designer LED Suspended Direct Steel Luminaire



STANDARD

OPTIONAL



ORDERING INFORMATION

Example: LDL5DSS35MSMW4

Options: 12EBL

PRODUCT SPECIFICATIONS

DESCRIPTION

The LDL5DS Series is an architecturally designed Suspended Direct Steel LED Luminaire that is classically styled and fit for any interior. It is available for continuous run mounting.

APPLICATIONS

The LDL5DS Series of Suspended Direct Steel luminaires are designed to be high quality, energy efficient LED fixtures for use in commercial applications, offices, hotel lobbies, museums, government facilities, schools, and public areas.

CONSTRUCTION

Our LDL5DS is constructed of a 5" wide heavy gauge steel body. The fixture is available in any run length within 1' increments. Heavy duty housing crimped along sides for extra rigidity and straight alignment. Fixture comes standard in white polyester polymer finish.

OPTICAL SYSTEM

High output LED's available in 3000K, 3500K, 4000K, and 5000K. CRI >82. Satin lens provides for a beautiful architectural design while maintaining optimal light output.

ELECTRICAL SYSTEM

Electronic drivers are available for 120/277V applications. Long-life LED system rated for >50K life hours (L70 @ 25°C). Metal gear tray for internal LED driver. Complies with federal energy efficiency standards.

MOUNTING

This fixture is designed to be suspended. Continuous run available.

LISTINGS

Independently tested to IESNA LM-79 and LM-80 specifications. UL and cUL Listed.

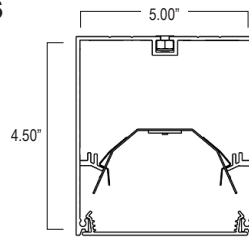
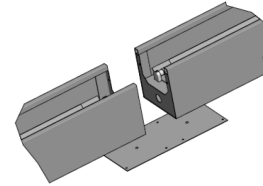
WARRANTY

5-Year Limited Warranty. Complete warranty and terms located at www.aelnow.com/warranty.

LDL5DS				
SERIES	COLOR TEMP	OUTPUT	LENS	VOLTAGE
LDL5DS	30 3000K 35 3500K 40 4000K 50 5000K	S Standard M Medium H High	A12 .100 #12 Acrylic Lens S Satin Lens	M 120/277 Multi-Volt

FINISH	ROW LENGTH (IN FEET)	OPTIONS	HANGING OPTIONS	WIRING HARNESS
W White SP Special	2 2 Feet 3 3 Feet 4 4 Feet 5 5 Feet 6 6 Feet 7 7 Feet 8 8 Feet XX Length in Ft	12EBL 1200 Lumen Emergency Ballast 45 45 Degree 90 90 Degree	CP50 Cord Pendant (No Power Feed) 50" CP100 Cord Pendant (No Power Feed) 100" CPPF50 Cord Pendant (Power Feed Capable) 50" CPPF100 Cord Pendant (Power Feed Capable) 100" RPXX Rigid Pendant (Power Feed Capable) - Specify Pendant Length (XX) *Additional Hanging Options Available Please see Page 2	WH34 3-Wire 4 Feet WH44 4-Wire 4 Feet WH54 5-Wire 4 Feet WH38 3-Wire 8 Feet WH48 4-Wire 8 Feet WH58 5-Wire 8 Feet

For optional lumen packages, please add the desired lumens to the end of the part number

FIXTURE DIMENSIONS

For Continuous Run Mounts:

ROW CONFIGURATIONS

AEL would like to double check your Bill of Material upon placement of your order if the number of rows and their individual row lengths are provided on the purchase order as follows:

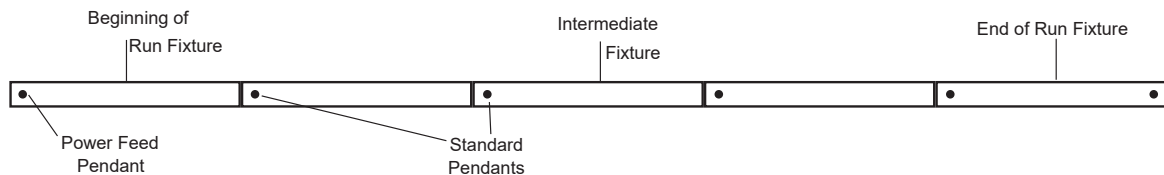
Row 1 - 8'

Row 2 - 8'

Row 3 - 24'

Row 4 - 24'

Please provide any additional pertinent information such as additional power drops required mid-row.



Fixture Length	Row Length	2'	4'	6'	8'	10'	12'	14'	16'	18'	20'	22'	24'	26'	28'	30'	32'	34'	36'	38'	40'	42'	44'	46'	48'
	2'	1		1		1		1		1		1		1		1		1		1		1		1	
4'		1	1			1	1			1	1			1	1			1	1			1	1		
8'					1	1	1	1	2	2	2	2	3	3	3	3	4	4	4	4	5	5	5	5	6
Total Pendants Needed		2	2	3	2	3	3	4	3	4	4	5	4	5	5	6	5	6	6	7	6	7	7	8	7

ENERGY AND PERFORMANCE DATA

Input Voltage	120/277VAC
System Input Power	32, 40, or 60 Watts*
Delivered Lumen Output	3,942 - 7,884 Lumens
Standard Dimming Control	0-10V
CCT	3000, 3500, 4000, 5000 Kelvin
CRI	82 (minimum)
Life Time Rating	50,000 hrs @ L70
Input Frequency	50/60 Hz
Power Factor	>0.9
Operating Temp	30° to 50° C

*Actual wattage may differ by ±5% while operating 120/277V ±10%

LED SYSTEM DATA

Output	Delivered Lumens	System Wattage	L70 @ 25°C (hrs)	Amperage Draw	
				120V	277V
Standard	3942	32	>50K	.27A	.12A
Medium	5300	40	>50K	.33A	.14A
High	7884	60	>50K	.50A	.22A

PENDANT ORDERING DETAIL

A standard mounting pendant is needed for each fixture, plus one pendant with power feed capability per continuous row or circuit. Contact your AEL representative for additional information.

Pendant	Length
RP Rigid Pendant (Power Feed Capable)	XX Specify Pendant Length (Replace "XX" with Row Length. Must Be Ordered in 1' Increments)
CP Cord Pendant (No Power Feed)	
CPPF Cord Pendant (Power Feed Capable)	
CPY Cord Pendant Y-Hanger (No Power Feed)	
CPPFY Cord Pendant Y-Hanger (Power Feed Capable)	

