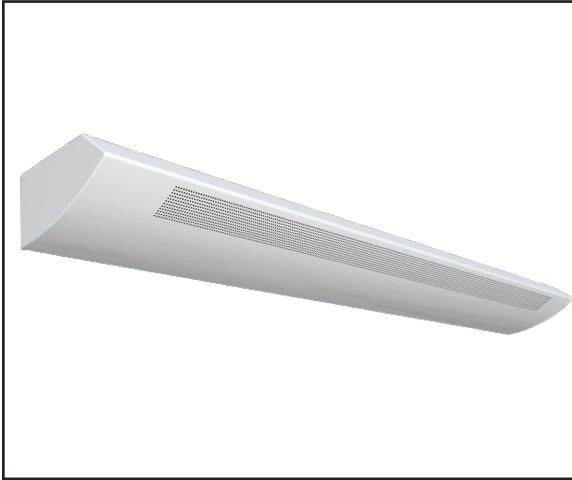


LAPW

Perforated LED Wall Mount Linear



STANDARD

OPTIONAL



PRODUCT SPECIFICATIONS

DESCRIPTION

The LAPW Series is a LED Wall Mount Linear fixture available available for stand-alone or continuous run applications.

APPLICATIONS

The LAPW Series were designed to be high quality, energy efficient LED fixtures for use in corridors, offices, government facilities, schools, and public areas.

CONSTRUCTION

The fixture is constructed of a heavy gauge cold rolled steel body. Units are shipped with die cast aluminum joiners installed for structural continuity and for attaching other units for continual runs or end caps. Architectural die cast chamfered aluminum ends for a complete designer look without exposed fasteners.

OPTICAL SYSTEM

White polyester polymer finish with a high reflectivity. Forward throw optics designed specifically for wall mount applications.

ELECTRICAL SYSTEM

0-10V Dimming included standard. Long-life LED system rated for >100,000 life hours (L70@25 °C).

MOUNTING

The units mount to a wall bracket that compensates for uneven surfaces and allows for recessed electrical boxes. The wall brackets are 4-8-3/4 long and two are needed with an eight foot housing.

LISTINGS

UL and cUL Listed. Damp location rated.

WARRANTY

5-Year Limited Warranty. Complete warranty and terms located at www.aelnow.com/warranty.

ORDERING INFORMATION

Example: LAPW35SMMW

LAPW	Output		Voltage	Color	Driver Options	Emergency Options	Harness Options	
Series	CCT							
LAPW	30	3000K	M Multi-Volt (120-277VAC)	W White SP Custom	(Blank)* CD1 0-10V Dimming Driver (included standard) CD5 0-10V 1% to Off Dimming Driver EDN 0-10V 5% to Off Dimming Driver FLDD Electronic Driver Non-Dimming LDE1 Fifth Light Dali, Dimming Lutron Hi-Lume 1% EcoSystem LED driver with Soft-on, Fade-to-Black dimming LDE5 Lutron LDE5 5-Series Ecosystem 5% Dimming	12EBL 1200 Lumen Emergency Ballast	WH34 Wiring Harness 3 Wire 4' WH44 Wiring Harness 4 Wire 4' WH54 Wiring Harness 5 Wire 4' WH38 Wiring Harness 3 Wire 8' WH48 Wiring Harness 4 Wire 8' WH58 Wiring Harness 5 Wire 8'	
	35	3500K						SL Standard Low ML Medium Low
	40	4000K						HL High Low
	50	5000K						SM Standard Medium MM Medium Medium

*0-10V 10% dimming driver included standard with SL-ML outputs. (4650 - 7974 lumens)

*0-10V 1% to off dimming driver included standard with HL- MM outputs. (11150 - 13016 lumens)

Output	Delivered Lumens	System Wattage	L70 @20C (hrs)
SL	4650	33	>100K
ML	7974	57	>100K
HL	11150	80	>100K
SM	12040	86	>100K
MM	13016	93	>100K

FIXTURE DIMENSIONS
