

## DESCRIPTION

The HCLL Series is a Half Cylinder Linear fixture available for stand-alone or continuous run applications. It is available for continuous run mounting. Driven by performance and a clean aesthetic, the HCLL series represents the ultimate in simplicity; a narrow, uniform line of light. Constructed with premium materials with industry leading technology, the HCLL Series is available in configurable runs. The HCLL Series integrates seamlessly with today's modern building management systems. With virtually unlimited applications, the HCLL Series allows architects and designers the freedom to experiment with their designs without exceeding ever decreasing energy budgets.

## PRODUCT SPECIFICATIONS

### APPLICATIONS

The HCLL Series were designed to be high quality, energy efficient LED fixtures for use in corridors, offices, government facilities, schools, and public areas.

### CONSTRUCTION

The fixture is constructed die-formed heavy-gauge pre-painted cold rolled steel. 5/64" diameter microperforations at staggered 7/64" intervals. Hinged baffle for quick, easy lamp access.

### OPTICAL SYSTEM

White polyester polymer finish with a high reflectivity. Microperforated baffle with white opal acrylic inlay combines soft downlight with even ceiling illumination.

### ELECTRICAL SYSTEM

Electronic drivers are available for 120/277V applications. Long-life LED system rated for >50K life hours (L70 @ 25Å°C). Metal gear tray for internal LED driver. Complies with federal energy efficiency standards. 0-10 dimming standard.

### MOUNTING

Designed to mount on exact 4 foot and 8 foot centers. Joiners will accept stems, single cable and power cords as supplied by others. Continuous run joiner (w/o metal end plates or foam gaskets), for use in continuous runs. One joiner used for every two 4' units to make an 8' tandem fixture.

### LISTINGS

UL and cUL Listed. Damp location rated.

### WARRANTY

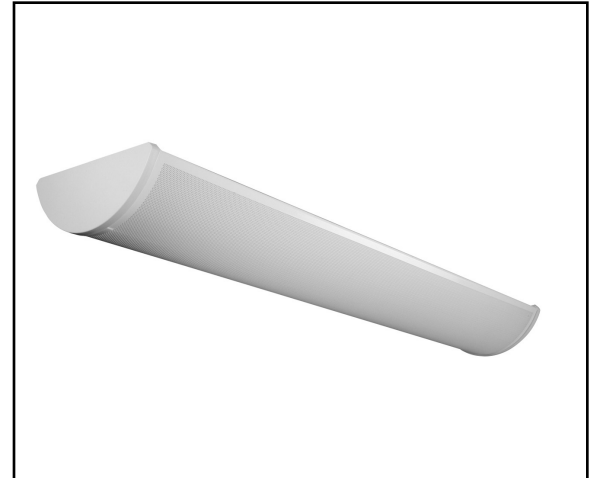
5-Year Limited Warranty. Complete warranty and terms located at [www.aelnow.com/warranty](http://www.aelnow.com/warranty).

### CONTROLS

The fixture is compatible with 0-10V dimming controls.

## HCLL

### HIGH PERFORMANCE HALF CYLINDER LINEAR LUMINAIRE

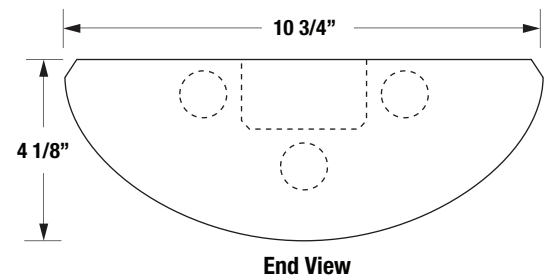


STANDARD

OPTIONAL



## FIXTURE DIMENSIONS



### LUMINAIRE SPECIFICATION

Example: HCLL-2-17-WT-10-35-C6SJ

SERIES		NUMBER LAMPS		LAMP TYPE		WIRE APPLICATION	
HCLL	SINGLE	2	2 LAMPS	17	17W T8 (2')	BLANK	Single End Wiring
HCLT	TANDEM	3	3 LAMPS	28T8	28W T8 (51.65")	DE	Double End Wiring
				28T5	28W T5 (51.65")		
				32	32W T8 (51.65")		
				54	54W T5HO (55.65")		

LED		WATTAGE OPTIONS		COLOR TEMP		OPTIONS	
LED	Wired for LED lamps (Furnished by others)	10	10 Watt 24" or 36"	35	3500K	12EBL	1200 Lumen Emergency
WT	With tubes	12	12 Watt 48"	40	4000K	SMH	Surface Mount
		15	15 Watt 36" or 48"	50	5000K	FW	FLEXIBLE ARMoured CABLE 6'
		18	18 Watt 48"			C6SJ	6' SJ FLEX WHIP 16/3
		20	20 Watt 48"			C10SJ	10' SJ FLEX WHIP 16/3
						CPPF100	AIRCRAFT HANGER 100"
						CPPF120	AIRCRAFT HANGER 120"
						CPPFXX	AIRCRAFT HANGER SPECIAL LENGTH
						RP1	Rigid Pendant 1"
						RP2	Rigid Pendant 2"
						RP3	Rigid Pendant 3"
						RP6	Rigid Pendant 6"
						RPXX	Rigid Pendant Costume Length
						CP100	AIRCRAFT HANGER 100"
						CP120	AIRCRAFT HANGER 120"
						CPXX	AIRCRAFT HANGER SPECIAL LENGTH

### ROW CONFIGURATIONS

AEL would like to double check your Bill of Material upon placement of your order if the number of rows and their individual row lengths are provided on the purchase order as follows:

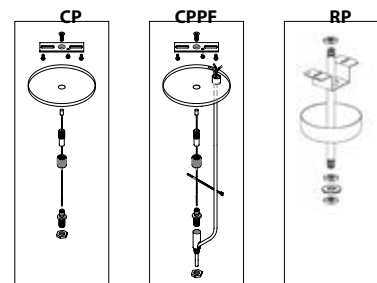
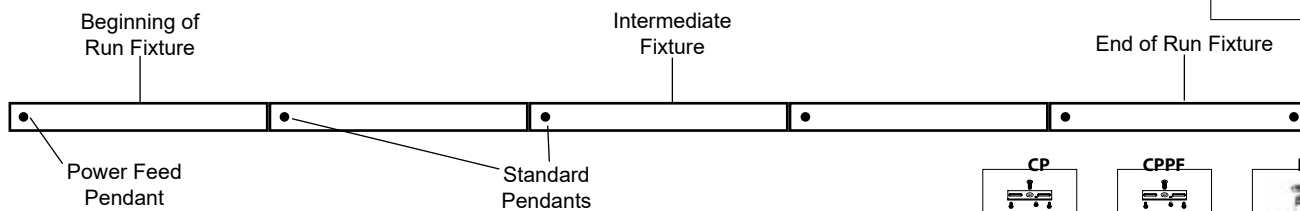
- Row 1 - 8'
- Row 2 - 8'
- Row 3 - 24'
- Row 4 - 24'

Please provide any additional pertinent information such as additional power drops required mid-row.

### PENDANT ORDERING DETAIL

A standard mounting pendant is needed for each fixture, plus one pendant with power feed capability per continuous row or circuit. Contact your AEL representative for additional information.

Pendant	Length
RP	Rigid Pendant (Power Feed Capable)
CP	Cord Pendant (No Power Feed)
CPPF	Cord Pendant (Power Feed Capable)
XX	Specify Pendant Length (Replace "00" with Row Length. Must Be Ordered in 1' Increments)



Row Length	4'	8'	12'	16'	20'	24'	28'	32'	36'	40'	44'	48'
Fixture Length 4'	1		1		1		1		1		1	
Fixture Length 8'		1	1	2	2	3	3	4	4	5	5	6
Total Pendants Needed	2	2	3	3	4	4	5	5	6	6	7	7