

ADVANTAGE ENVIRONMENTAL LIGHTING

ael now for exceptional quality products



Catalog #	
Project	
Date	
Type	

DESCRIPTION

The HCL Series is a Half Cylinder Linear Fluorescent fixture available for stand-alone or continuous run applications. It is available for continuous run mounting. Driven by performance and a clean aesthetic, the HCL series represents the ultimate in simplicity; a narrow, uniform line of light. Constructed with premium materials with industry leading technology, the HCL Series is available in configurable runs. The HCL Series integrates seamlessly with today's modern building management systems. With virtually unlimited applications, the HCL Series allows architects and designers the freedom to experiment with their designs without exceeding ever decreasing energy budgets.

PRODUCT SPECIFICATIONS

APPLICATIONS

The HCL Series were designed to be high quality, energy efficient fluorescent fixtures for use in corridors, offices, government facilities, schools, and public areas.

CONSTRUCTION

The fixture is constructed die-formed heavy-gauge pre-painted cold rolled steel. 5/64" diameter microperforations at staggered 7/64" intervals. Hinged baffle for quick, easy lamp access.

OPTICAL SYSTEM

White polyester polymer finish with a high reflectivity. Microperforated baffle with white opal acrylic inlay combines soft downlight with even ceiling illumination.

ELECTRICAL SYSTEM

Standard 120-277V electronic instant start ballasts for T8 lamping, ≤10% THD. Standard 120-277V electronic program start ballasts for T5 lamping, ≤10% THD. 50-60 Hz operation. Sound rated A. Thermally protected. Automatic resetting Class P. High Power Factor. Non PCB.

MOUNTING

Designed to mount on exact 4 foot and 8 foot centers. Joiners will accept stems, single cable and power cords as supplied by others.

LISTINGS

UL and cUL Listed. Damp location rated.

CONTROLS

The fixture is compatible with 0-10V dimming controls.

WARRANTY

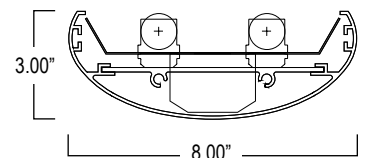
1-Year Limited Warranty. Complete warranty and terms located at www.aelnow.com/warranty.

HCL

HIGH PERFORMANCE HALF CYLINDER LINEAR FLOURESCENT LUMINAIRE



FIXTURE DIMENSIONS



AEL -- Advantage Environmental Lighting

Address: 917 West Mayfield, Suite 103
Arlington, TX 76015
Phone: 817-468-3591
Email: info@aelnow.com

© 2015 Advantage Environmental Lighting, Inc. All rights reserved.
For informational purposes only. Specifications are subject to change without notice. See www.aelnow.com for the most current fixture specifications available.
Website: www.aelnow.com

The AEL Now Promise to Our Customers:
Environmental Commitment
Exceptional Product Quality
Unsurpassed Customer Service

LUMINAIRE SPECIFICATION

Example: HCL254M
 Emergency Options: EM5
 Harness Options: FW

SERIES	LAMPS	WATTAGE	VOLTAGE
HCL = SINGLE	2	28T5 = 28W T5	M = MULTIVOLT (120-277 VAC)
HCLT= TANDEM	3	28T8 = 28W T8	
		32 = 32W T8 54 = 54W T5HO	

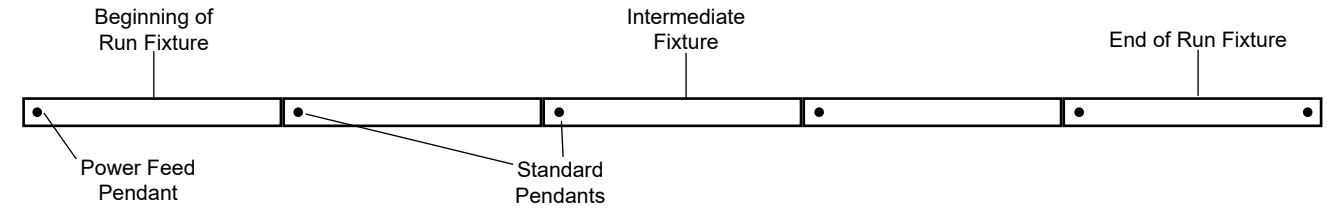
BALLAST OPTIONS	EMERGENCY OPTIONS	HARNESS OPTIONS	AIRCRAFT/RIGID PENDANTS	AIRCRAFT HANGAR NO WIRE WAY
BLANK = NORMAL instant start L = LOW instant start H = HIGH instant start EBPL = ELECTRONIC BALLAST PROGRAM LOW EBPN = ELECTRONIC BALLAST PROGRAM NORMAL EBPH = ELECTRONIC BALLAST PROGRAM HIGH *CD2LT8 = CONT DIMMING 2L T8 *CD2LT5 = CONT DIMMING 2L T5 **CD4LT8 = CONT DIMMING 4L T8 *SD2LT8 = STEP DIMMING 2L T8 *SD2LT5 = STEP DIMMING 2L T5 **SD4LT8 = STEP DIMMING 4L T8 * 2 LAMP WILL OPERATE 1 AND 2 LAMPS * 4 LAMP WILL OPERATE 3 AND 4 LAMPS Note : when ordering dimming option you must identify 120v or 277v.	BLANK = NONE EM5 EM7 EM14 EM14T5	FW = FLEXABLE ARMoured CABLE 6' 16/3 C6SJ = 6' SJ FLEX WHIP C10SJ = 10' SJ FLEX WHIP 16/3 WH34 = WIRING HARNESS 3 WIRE 4' WH44 = WIRING HARNESS 4 WIRE 4' WH54 = WIRING HARNESS 5 WIRE 4' WH38 = WIRING HARNESS 3 WIRE 8' WH48 = WIRING HARNESS 4 WIRE 8' WH58 = WIRING HARNESS 5 WIRE 8'	CPPF100 = AIRCRAFT HANGER 100" CPPF120 = AIRCRAFT HANGER 120" CPPFX = AIRCRAFT HANGER SPECIAL LENGTH RP1 = Rigid Pendant 1" RP2 = Rigid Pendant 2" RP3 = Rigid Pendant 3" RP6 = Rigid Pendant 6"	CP100 = AIRCRAFT HANGER 100" CP120 = AIRCRAFT HANGER 120" CPXX = AIRCRAFT HANGER SPECIAL LENGTH

ROW CONFIGURATIONS

AEL would like to double check your Bill of Material upon placement of your order if the number of rows and their individual row lengths are provided on the purchase order as follows:

- Row 1 - 8'
- Row 2 - 8'
- Row 3 - 24'
- Row 4 - 24'

Please provide any additional pertinent information such as additional power drops required mid-row.



Row Length	4'	8'	12'	16'	20'	24'	28'	32'	36'	40'	44'	48'	
Fixture Length	4'	1	1	1	1	1	1	1	1	1	1	1	
Fixture Length	8'		1	1	2	2	3	3	4	4	5	5	6
Total Pendants Needed		2	2	3	3	4	4	5	5	6	6	7	7

PENDANT ORDERING DETAIL

A standard mounting pendant is needed for each fixture, plus one pendant with power feed capability per continuous row or circuit. Contact your AEL representative for additional information.

Pendant	Length
RP Rigid Pendant (Power Feed Capable)	XX Specify Pendant Length (Replace "XX" with Row Length. Must Be Ordered in 1' Increments)
CP Cord Pendant (No Power Feed)	
CPPF Cord Pendant (Power Feed Capable)	

