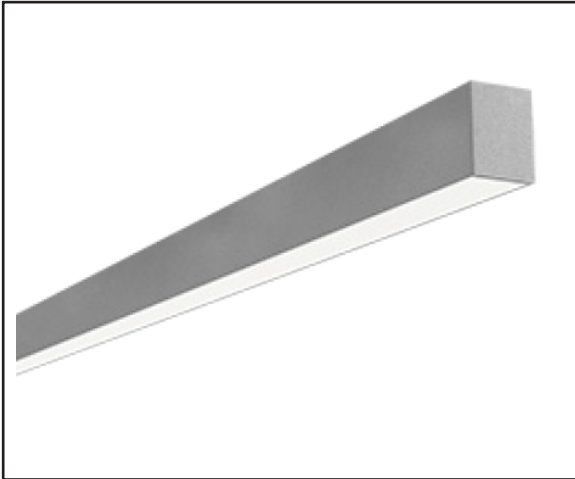




Catalog Number
Project
Type

DL5DS

5" Suspended Direct Steel Designer Fluorescent



PRODUCT SPECIFICATIONS

DESCRIPTION:

The DL5DS is an architecturally designed Suspended Direct Steel Fluorescent Luminaire that is classically styled and fit for any interior. It is available for continuous run mounting.

APPLICATIONS:

The DL5D' Fluorescent luminaires were designed to be high quality, energy efficient fluorescent fixtures for use in commercial applications, offices, hotel lobbies, museums, government facilities, schools, and public areas.

CONSTRUCTION:

The fixture is constructed of a 5" wide heavy gauge steel body. The DL5DS is available in any run length withing 1' increments. Heavy duty housing crimped along sides for extra rigidity and straight alignment.

OPTICAL SYSTEM:

This fixture is provided with a precision formed, high-efficiency reflector designed to direct the light downward and outward into usable horizontal illumination. The symmetrical reflector provides exceptional downward throw.

ELECTRICAL SYSTEM:

Standard 120-277V electronic instant start ballasts for T8 lamping, ≤10% THD. Standard 120-277V electronic program start ballasts for T5 lamping, ≤10% THD. 50-60 Hz operation. Sound rated A. Thermally protected. Automatic resetting Class P. High Power Factor. Non PCB.

MOUNTING:

This fixture is designed to be suspended. Continuous run available.

LISTINGS:

Independently tested to IESNA LM-79 and LM-80 specifications. UL and cUL Listed.

WARRANTY:

5-Year Limited Warranty. Complete warranty and terms located at <http://www.AELnow.com/warranty>

ORDERING INFORMATION

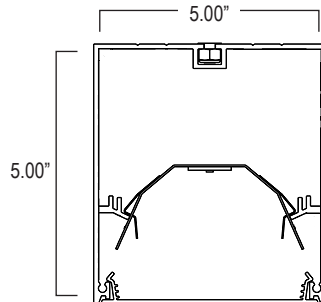
Example: DL5DS232SMW8
Options: EM14

DL5DS				
SERIES	# OF LAMPS	LAMP WATTAGE	LENS	VOLTAGE
DL5DS	1 1 Lamp 2 2 Lamp	14 14W T8 17 17W T8 28T8 28W T8 28T5 28W T5 32 32W T8 54 54W T5 High Output	A12 .100 #12 Acrylic S Satin	M 120/277 Multi-Volt

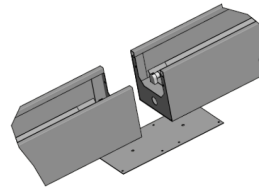
FINISH	ROW LENGTH (IN FEET)	BALLAST OPTIONS	HANGING OPTIONS	OPTIONS	WIRING HARNESS
W White SP Special	2 2 Feet 3 3 Feet 4 4 Feet 5 5 Feet 6 6 Feet 7 7 Feet 8 8 Feet XX Length in Ft	L LOW Instant Start H HIGH Instant Start EBPL Electronic Ballast Program Low EBPN Electronic Ballast Program Normal EBPH Electronic Ballast Program High *CD2LT8 Continuous Dimming 2L T8 *CD2LT5 Continuous Dimming 2L T5 *SD2LT8 Step Dimming 2L T8 *SD2LT5 Step Dimming 2L T5 *2 Lamp will operate 1 and 2 Lamps*	CP50 Cord Pendant (No Power Feed) 50' CP100 Cord Pendant (No Power Feed) 100' CPPF50 Cord Pendant (Power Feed Capable) 50' CPPF100 Cord Pendant (Power Feed Capable) 100' RPXX Rigid Pendant (Power Feed Capable) - Specify Pendant Length (XX) CPY50 Y-Hanger Cord Pendant (No Power Feed) 50' CPY100 Y-Hanger Cord Pendant (No Power Feed) 100' CPYXX Y-Hanger Cord Pendant (No Power Feed, XX =Length in Ft) CPPFY50 Y-Hanger Cord Pendant (Power Feed Capable) 50' CPPFY100 Y-Hanger Cord Pendant (Power Feed Capable) 100' CPPFYXX Y-Hanger Cord Pendant (Power Feed Capable, XX =Length in Ft)	FW Flex Whip Cable 45 45 Degree 90 90 Degree	WH34 3-Wire 4 Feet WH44 4-Wire 4 Feet WH54 5-Wire 4 Feet WH38 3-Wire 8 Feet WH48 4-Wire 8 Feet WH58 5-Wire 8 Feet

**PLEASE NOTE: Contact Factory for Special Applications, including Ceiling-to-Wall **

FIXTURE DIMENSIONS



For Continuous Run Mounts:

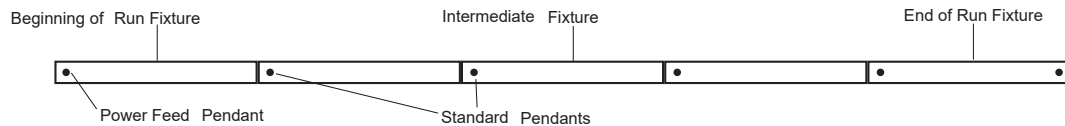


ROW CONFIGURATIONS

AEL would like to double check your Bill of Material upon placement of your order if the number of rows and their individual row lengths are provided on the purchase order as follows:

Row 1 - 8' Row 2 - 8' Row 3 - 20' Row 4 - 20'

*Please provide any additional pertinent information such as additional power drops required mid-row.



Row Length	2'	4'	6'	8'	10'	12'	14'	16'	18'	20'	22'	24'	26'	28'	30'	32'	34'	36'	38'	40'	42'	44'	46'	48'
2'	1		1		1		1		1		1		1		1		1		1		1		1	
4'		1	1		1	1			1	1			1	1			1	1				1	1	
8'				1	1	1	1	2	2	2	2	3	3	3	3	4	4	4	4	5	5	5	5	6
Total Pendants Needed	2	2	3	2	3	3	4	3	4	4	5	4	5	5	6	5	6	6	7	6	7	7	8	7

PENDANT ORDERING DETAIL

A standard mounting pendant is needed for each fixture, plus one pendant with power feed capability per continuous row or circuit. Contact your AEL representative for additional information.

Pendant	Length
RP Rigid Pendant (Power Feed Capable)	XX Specify Pendant Length (Replace "XX" with Row Length. Must Be Ordered in 1' Increments)
CP Cord Pendant (No Power Feed)	
CPPF Cord Pendant (Power Feed Capable)	
CPY Cord Pendant Y-Hanger (No Power Feed)	
CPPFY Cord Pendant Y-Hanger (Power Feed Capable)	

