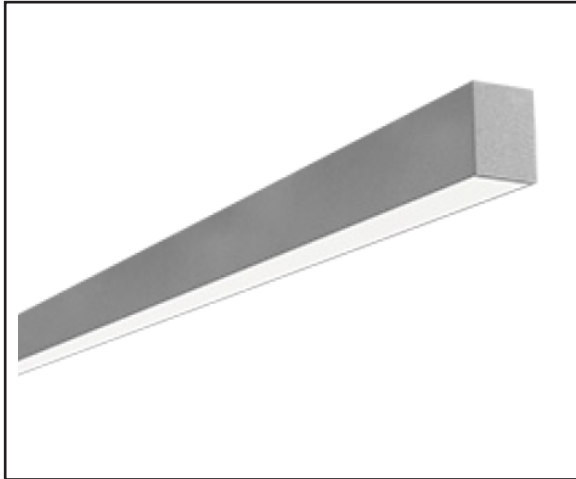




Catalog Number
Project
Type

DL4DIDS

4" Suspended Direct Indirect Steel Designer Fluorescent



PRODUCT SPECIFICATIONS

DESCRIPTION:

The DL4DIDS is an architecturally designed Suspended Mount Direct Indirect Steel Fluorescent Luminaire that is classically styled and fit for any interior. It is available for continuous run mounting.

APPLICATIONS:

The DL4DID' Fluorescent luminaires were designed to be high quality, energy efficient fluorescent fixtures for use in commercial applications, offices, hotel lobbies, museums, government facilities, schools, and public areas.

CONSTRUCTION:

The fixture is constructed of a 4" wide heavy gauge steel body. The DL4DIDS is available in any run length withing 1' increments. Heavy duty housing crimped along sides for extra rigidity and straight alignment.

OPTICAL SYSTEM:

This fixture is provided with a precision formed, high-efficiency reflector designed to direct the light downward and outward into usable horizontal illumination. The symmetrical reflector provides exceptional downward throw.

ELECTRICAL SYSTEM:

Standard 120-277V electronic instant start ballasts for T8 lamping, ≤10% THD. Standard 120-277V electronic program start ballasts for T5 lamping, ≤10% THD. 50-60 Hz operation. Sound rated A. Thermally protected. Automatic resetting Class P. High Power Factor. Non PCB.

MOUNTING:

This fixture is designed to be suspended. Continuous run available.

LISTINGS:

Independently tested to IESNA LM-79 and LM-80 specifications. UL and cUL Listed.

WARRANTY:

5-Year Limited Warranty. Complete warranty and terms located at <http://www.AELnow.com/warranty>

ORDERING INFORMATION

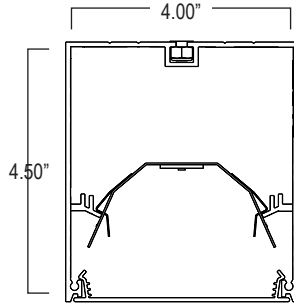
Example: DL4DIDSS232SMEBPNW208
Options: EM14CP100

SERIES	MOUNTING	# OF LAMPS	LAMP WATTAGE	LENS	VOLTAGE
DL4DIDS Single	S Suspended	1 1 Lamp	14 14W T8	A12 .100 #12 Acrylic	M 120/277 Multi-Volt
DL4DIDST Tandem		2 2 Lamp	17 17W T8 28T8 28W T8 28T5 28W T5 32 32W T8 54 54W T5 High Output	S Satin	

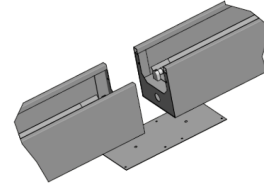
BALLAST OPTIONS	FINISH	PERCENTAGE OF UPLIGHT	ROW LENGTH (IN FEET)	EMERGENCY OPTIONS	HANGING OPTIONS	OPTIONS	WIRING HARNESS
L LOW Instant Start H HIGH Instant Start	W White SP Special	10 10% 20 20%	2 2 Feet 3 3 Feet 4 4 Feet 5 5 Feet 6 6 Feet 7 7 Feet 8 8 Feet XX Length in Ft	EM5 EM7 EM14 EM14T5	CP50 Cord Pendant (No Power Feed) 50' CP100 Cord Pendant (No Power Feed) 100' CPPF50 Cord Pendant (Power Feed Capable) 50' CPPF100 Cord Pendant (Power Feed Capable) 100' RPXX Rigid Pendant (Power Feed Capable) - Specify Pendant Length (XX)	FW Flex Whip Cable 45 45 Degree 90 90 Degree	WH34 3-Wire 4 Feet WH44 4-Wire 4 Feet WH54 5-Wire 4 Feet WH38 3-Wire 8 Feet WH48 4-Wire 8 Feet WH58 5-Wire 8 Feet
*CD2LT8 Continuous Dimming 2L T8 *CD2LT5 Continuous Dimming 2L T5 *SD2LT8 Step Dimming 2L T8 *SD2LT5 Step Dimming 2L T5							
2 Lamp will operate 1 and 2 Lamps							

PLEASE NOTE: Contact Factory for Special Applications, including Ceiling-to-Wall

FIXTURE DIMENSIONS



For Continuous Run Mounts:



Row Length	2'	4'	6'	8'	10'	12'	14'	16'	18'	20'	22'	24'	26'	28'	30'	32'	34'	36'	38'	40'	42'	44'	46'	48'	
2'	1		1		1		1		1		1		1		1		1		1		1		1		1
4'		1	1			1	1			1	1			1	1			1	1				1	1	
8'				1	1	1	1	2	2	2	2	3	3	3	3	4	4	4	4	5	5	5	5	6	
Total Pendants Needed	2	2	3	2	3	3	4	3	4	4	5	4	5	5	6	5	6	6	7	6	7	7	8	7	

PENDANT ORDERING DETAIL

A standard mounting pendant is needed for each fixture, plus one pendant with power feed capability per continuous row or circuit. Contact your AEL representative for additional information.

Pendant	Length
RP Rigid Pendant (Power Feed Capable)	XX Specify Pendant Length (Replace "XX" with Row Length. Must Be Ordered in 1' Increments)
CP Cord Pendant (No Power Feed)	
CPPF Cord Pendant (Power Feed Capable)	

