



BAA Recessed LED Prison Grade



STANDARD



OPTIONAL



Approximate Color Temperature Multiplier	
5000K	1.03
4000K	1
3500K	0.97
3000K	0.94
2700K	0.91

DESCRIPTION

The BAA is a specification grade maximum security recessed luminaire. Designed and engineered for maximum security prison applications, the BAA is available in 1x1, 1x2, 1x4, 2x2, and 2x4 sizes.

HOUSING

Die formed, seam welded, and ground smooth (specify material and gauge). Incorporates a removable reflector unitized with all electrical components for easy installation and maintenance. Die formed one-piece frame with tightly closed corners. (material and gauge to match housing).

DOORFRAME

Various doorframe materials available. Comes standard with a white TGIC polyester powder coat – 5-stage pre-treatment. Salt spray test: 1,000 hours; Reflectance: 92%. Doorframe secured to housing with stainless steel aircraft cables and tamper proof fasteners.

TAMPER-PROOF FASTENERS

Tamper resistant Torx head fasteners secure the doorframe to the housing. Allenhead screws with center pin reject option.

ELECTRICAL SYSTEM

Electronic driver 0-10V, 1% dimming standard. Additional driver options available. Long-life LED system rated for >100K hours (L70 @ 45°C). Complies with federal energy efficiency standards.

OPTICAL SYSTEM

Inner lens for LED diffusion, and outer lens for impact resistance. Lenses ordered per specification (see options) and secured by retainers with weld studs for maximum strength.

LISTINGS

IP65 with Wet Location Option. NSF = NSF2 listed (Non-Food, Splash Zone). UL listed for damp location. Anti-ligature design.

MOUNTING

Recessed grid and recessed flanged applications. Easy installation with adjustable 90° swing arm system standard. Universal mounting allows for both recessed flanged and recessed grid mounting.

LED

80 CRI or 90 CRI LEDs available in 2700K, 3000K, 3500K, 4000K and 5000K. Life is >100,000 hours at 70% lumen maintenance.

WARRANTY

5 - Year Limited Warranty. Complete warranty and terms located at: www.aelnow.com/warranty

Output	Delivered Lumens	System Wattage	L70 @45°C (hrs)
L	2536	18	>100K
SL	4650	33	>100K
ML	7974	57	>100K
HL	11150	80	>100K
SM	12040	86	>100K
MM	13016	93	>100K
HM	15728	112	>100K
SH	16500	118	>100K
MH	20000	143	>100K
HH	25000	179	>100K

Delivered Lumens shown were tested with 4000K LEDs and ASR (asymmetric/symmetric grid) lens.

NOTES:

BAA11 (1x1) only available up to SL - Standard Low

BAA12 (1x2) only available up to HL - High Low

BAA14 (1x4) only available up to HM - High Medium

BAA22 (2x2) only available up to HM - High Medium

ORDERING INFORMATION

Example: BAA2440MMB14B14250PPA125M

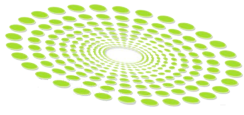
Series		CCT		Illumination Level*		Housing	
BAA11	1x1	27	2700K	L	Low	B12	Cold Roll 12 Gauge Steel
BAA12	1x2	30	3000K	SL	Standard Low	B14	Cold Roll 14 Gauge Steel
BAA14	1x4	35	3500K	ML	Medium Low	B16	Cold Roll 16 Gauge Steel
BAA22	2x2	40	4000K	HL	High Low	B18	Cold Roll 18 Gauge Steel
BAA24	2x4	50	5000K	SM	Standard Medium	B20	Cold Roll 20 Gauge Steel
				MM	Medium Medium	SH14	Stainless Steel 14 Gauge
				HM	High Medium	SH16	Stainless Steel 16 Gauge
				SH	Standard High	SH18	Stainless Steel 18 Gauge
				MH	Medium High		
				HH	High High		

***NOTES:**

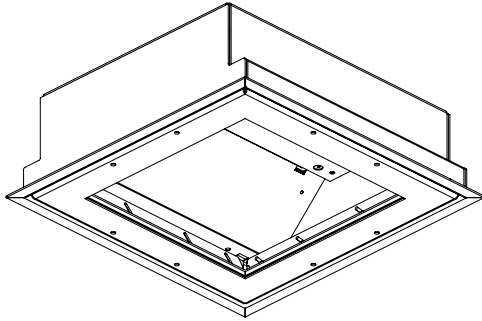
BAA11 (1x1) only available up to SL - Standard Low
 BAA12 (1x2) only available up to HL - High Low
 BAA14 (1x4) only available up to HM - High Medium
 BAA22 (2x2) only available up to HM - High Medium

Door Type		Outer Lens		Inner Lens	
B12	Cold Roll 12 Gauge Steel	125P	.125 Clear Polycarbonate	N	No Lens
B14	Cold Roll 14 Gauge Steel	156P	.156 Clear Polycarbonate	PA125	.125 Prismatic Acrylic
B16	Cold Roll 16 Gauge Steel	187P	.187 Clear Polycarbonate	PA156	.156 Prismatic Acrylic
B18	Cold Roll 18 Gauge Steel	250P	.250 Clear Polycarbonate	PP125	.125 Prismatic Polycarbonate
SH14	Stainless Steel 14 Gauge	375P	.375 Clear Polycarbonate	PP187	.187 Prismatic Polycarbonate
SH16	Stainless Steel 16 Gauge	CTG187	.187 Clear Tempered Glass	CTG/PA	Clear Tempered Glass with Prismatic Acrylic Overlay
SH18	Stainless Steel 18 Gauge	CTG250	.250 Clear Tempered Glass	FA	Frosted Acrylic
		CTG375	.375 Clear Tempered Glass	WTP	White Translucent Polycarbonate
				125P	.125 Clear Polycarbonate
				156P	.156 Clear Polycarbonate
				187P	.187 Clear Polycarbonate
				SY	Symmetric Diffused DR Acrylic

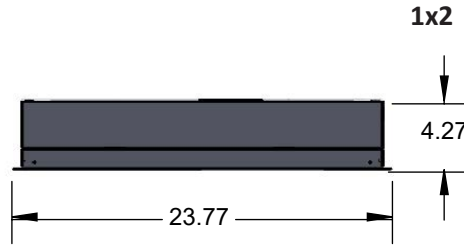
Voltage		Driver		Options	
M	120/277V	BLANK	0-10V 1% Dimming Driver <i>(included standard)</i>	12EBL	1200 Lumen Emergency Ballast
		CD5	0-10V 5% to Off Dimming Driver	AH	Allenhead Screws with center pin reject
		EDN	Electronic Driver Non-Dimming	LN	LED Night Light (Consult factory for available CCT)
		FLDD	Fifth Light Dali, Dimming	FZ	Fuse Holder
		LDE1	Lutron Hi-lume 1% EcoSystem LED driver with Soft-on, Fade-to-Black dimming technology	WL	Wet Location
		LDE5	Lutron LDE5 5-Series Ecosystem 5% Dimming	UV	.005 UV Absorbing Overlay
				90	90 CRI
				AM	Antimicrobial White Paint
				VDO	Lutron Vive Integral Fixture Control (RF with Daylight and Occupancy Sensing) Lutron
				FCJS0	Vive Attached Fixture Control (RF Only for 0-10V Drivers)



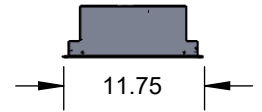
DIMENSIONS



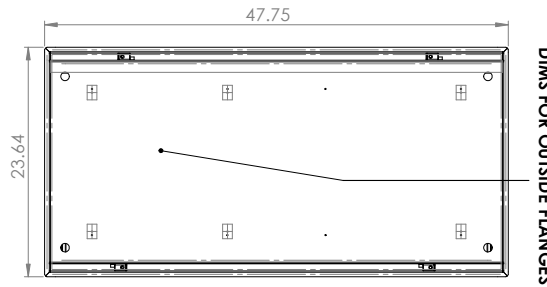
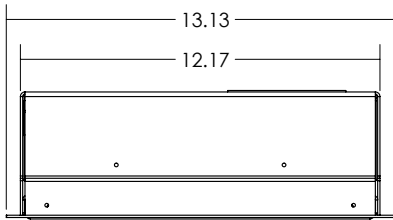
1x1



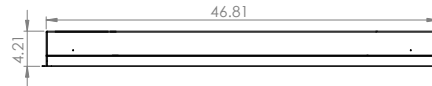
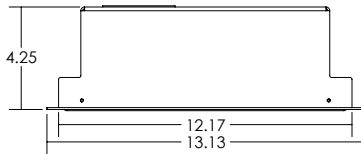
1x2



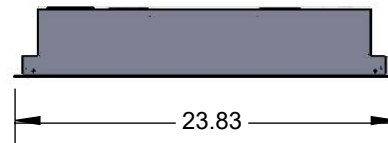
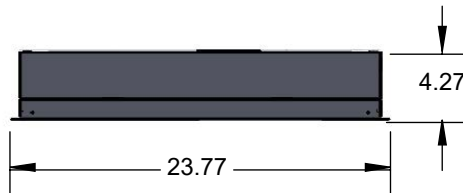
2x4



DIMS FOR OUTSIDE FLANGES



2x2



1x4

