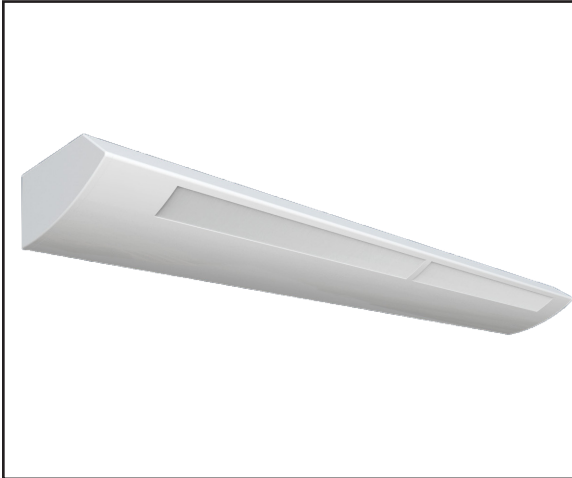




Catalog Number
Project
Type

ASW

Slotted Fluorescent Wall Mount Linear



PRODUCT SPECIFICATIONS

DESCRIPTION

The ASW Series is a Fluorescent Wall Mount Linear fixture available available for stand-alone or continuous run applications.

APPLICATIONS

The ASW Series were designed to be high quality, energy efficient fluorescent fixtures for use in corridors, offices, government facilities, schools, and public areas.

CONSTRUCTION

The fixture is constructed of a heavy gauge cold rolled steel body. Units are shipped with die cast aluminum joiners installed for structural continuity and for attaching other units for continual runs or end caps. Architectural die cast chamfered aluminum ends for a complete designer look without exposed fasteners.

OPTICAL SYSTEM

White polyester polymer finish with a high reflectivity. Forward throw optics designed specifically for wall mount applications.

ELECTRICAL SYSTEM

Standard 120-277V electronic instant start ballasts for T8 lamping, ≤10% THD. Standard 120-277V electronic program start ballasts for T5 lamping, ≤10% THD. 50-60 Hz operation. Sound rated A. Thermally protected. Automatic resetting Class P. High Power Factor. Non PCB.

MOUNTING

The units mount to a wall bracket that compensates for uneven surfaces and allows for recessed electrical boxes. The wall brackets are 48-3/4 long and two are needed with an eight foot housing.

LISTINGS

UL and cUL Listed. Damp location rated.

WARRANTY

1-Year Limited Warranty. Complete warranty and terms located at www.aelnow.com/ warranty.

ORDERING INFORMATION

Example: ASW232M

ASW				
Series	Number of Lamps ¹	Length (IN)	Voltage	Options
ASW Single	2 2 Lamps	28T8 28W T8 (48.00")	M Multi-Volt (120-277VAC)	H High Ballast Factor
ASWT Tandem		28T5 28W T5 (46.00")		L Low Ballast Factor
		32 32W T8 (48.00")		EBP Program Start Electronic Ballast (T8)
		54 54W T5HO (46.00")		EM5 90 Min, 500 Lumen Emergency Ballast (T8)
				EM7 90 Min, 700 Lumen Emergency Ballast (T8)
				EM14 90 Min, 1400 Lumen Emergency Ballast (T8)
				EM14T5 90 Min, 1400 Lumen Emergency Ballast (T5)
				FB¹ Internal Fast-Blow Fuse
				SB¹ Internal Slow-blow Fuse
				CD Continuous Dimming (T8)
				SD Step Dimming (T8)
				CD5 Continuous Dimming (T5)
				SD5 Step Dimming (T5)
				WH34 Wiring Harness; 3-Wire, 4-Ft
				WH44 Wiring Harness; 4-Wire, 4-Ft
				WH54 Wiring Harness; 5-Wire, 4-Ft
				WH38 Wiring Harness; 3-Wire, 8-Ft
				WH48 Wiring Harness; 4-Wire, 8-Ft
				WH58 Wiring Harness; 5-Wire, 8-Ft

NOTES: **1** If a tandem unit is ordered, the number of lamps is per each cross section (ASWT232M will accommodate 4 lamps, two per cross section). **2** Must specify 120V or 277V.



ASW
Slotted Fluorescent Wall Mount Linear

FIXTURE DIMENSIONS

