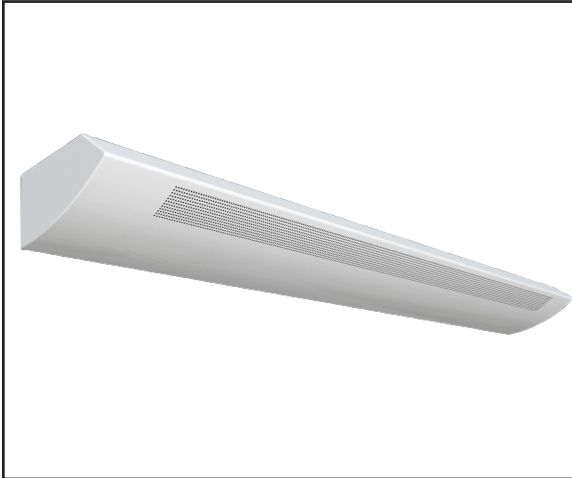




Catalog Number
Project
Type

APW

Perforated Fluorescent Wall Mount Linear



PRODUCT SPECIFICATIONS

DESCRIPTION

The APW Series is a Fluorescent Wall Mount Linear fixture available available for stand-alone or continuous run applications.

APPLICATIONS

The APW Series were designed to be high quality, energy efficient fluorescent fixtures for use in corridors, offices, government facilities, schools, and public areas.

CONSTRUCTION

The fixture is constructed of a heavy gauge cold rolled steel body. Units are shipped with die cast aluminum joiners installed for structural continuity and for attaching other units for continual runs or end caps. Architectural die cast chamfered aluminum ends for a complete designer look without exposed fasteners.

OPTICAL SYSTEM

White polyester polymer finish with a high reflectivity. Forward throw optics designed specifically for wall mount applications.

ELECTRICAL SYSTEM

Standard 120-277V electronic instant start ballasts for T8 lamping, ≤10% THD. Standard 120-277V electronic program start ballasts for T5 lamping, ≤10% THD. 50-60 Hz operation. Sound rated A. Thermally protected. Automatic resetting Class P. High Power Factor. Non PCB.

MOUNTING

The units mount to a wall bracket that compensates for uneven surfaces and allows for recessed electrical boxes. The wall brackets are 48-3/4 long and two are needed with an eight foot housing.

LISTINGS

UL and cUL Listed. Damp location rated.

WARRANTY

1-Year Limited Warranty. Complete warranty and terms located at www.aelnow.com/ warranty.

ORDERING INFORMATION

Example: APW232M

APW		Lamps per section	Wattage	Voltage	Color	Fixture Placement	Ballast Options	Emergency Options	Harness Options
APW Single	2	28T5 28W T5	M Multi-Volt (120-277VAC)	W White B Black T Titanium SP Custom	BE I S	(blank) Normal Instant Start H High Ballast Factor L Low Ballast Factor EBPL Electronic Ballast Program Low EBPN Electronic Ballast Program Normal EBPH Electronic Ballast Program High *CD2LT8 Continuous Dimming 2L T8 *CD2LT5 Continuous Dimming 2L T5 *SD2LT8 Step Dimming 2L T8 *SD2LT5 Step Dimming 2L T5	(blank) = none EM5 EM7 EM14 EM14T5	WH34 Wiring Harness 3 Wire 4' WH44 Wiring Harness 4 Wire 4' WH54 Wiring Harness 5 Wire 4' WH38 Wiring Harness 3 Wire 8' WH48 Wiring Harness 4 Wire 8' WH58 Wiring Harness 5 Wire 8'	
APWT Tandem		28T8 28W T8 32 32W T8 54 54W T5							

* 2 Lamp will operate 1 and 2 lamps
NOTES: 1 Must specify 120V or 277V.



APW

Perforated Fluorescent Wall Mount Linear

FIXTURE DIMENSIONS

