

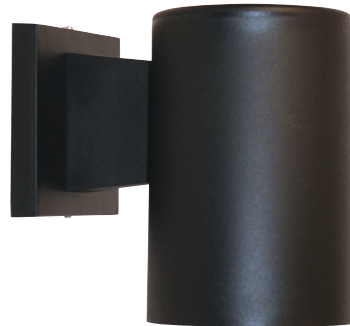
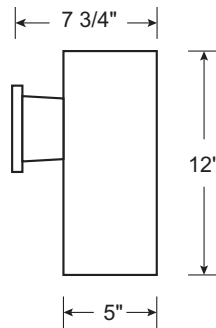
- Available in Incandescent & LED
- Turtle Safe & Dark Sky Friendly
- Fade & Rust Resistant Composite Construction
- UL Listed for Wet Locations

TURTLE & DARK SKY FRIENDLY



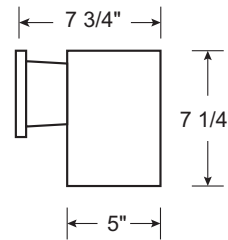
AE09

HCMT:
4 7/8"



AE10

HCMT:
2 3/8"



RoHS
compliant



EXAMPLE # AE09-I75-BK-LWE

SERIES #	LIGHT SOURCE	BODY	OPTIONS
AE09	INCANDESCENT, MEDIUM BASE, 120V	BK-Black	LED LAMP, 120V, 3 YEAR WARRANTY, DIMMABLE, ENERGY STAR
AE10	I75-1 X 75W Max PAR 30	WH-White	LWE-A19/E26, 80CRI, 3000K LCE-A19/E26, 80CRI, 4000K AMBER LED CORN COB, 100-277V, 5 YEAR WARRANTY, FWC APPROVED LA-E26, 1600K, 590nm

*FLORIDA WILDLIFE APPROVED WHEN ORDERED WITH AMBER LAMP OPTION.

Advantage Environmental Lighting

Address: 301 E Risinger Rd. Bldg 109
Fort Worth, TX 76140
Phone: 817-468-3591
Email: info@aelnow.com

Specifications are subject to change without notice.

Catalog #	
Project	
Date	
Type	