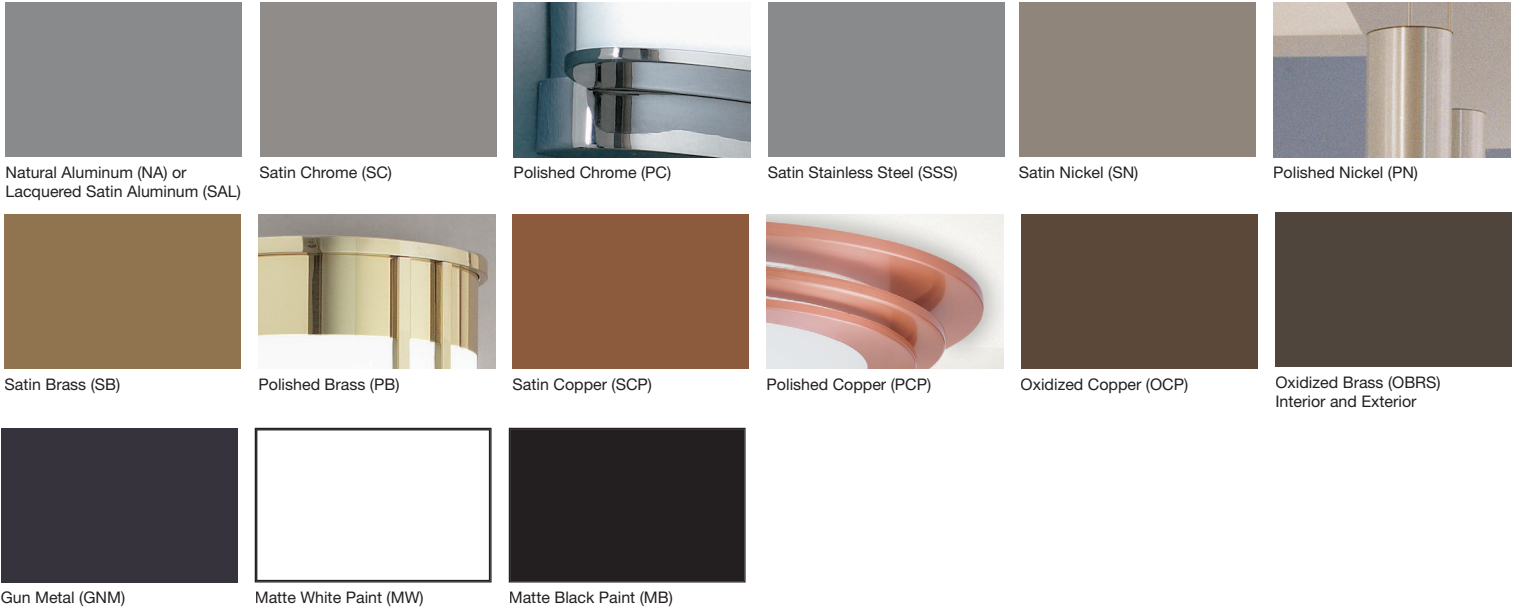
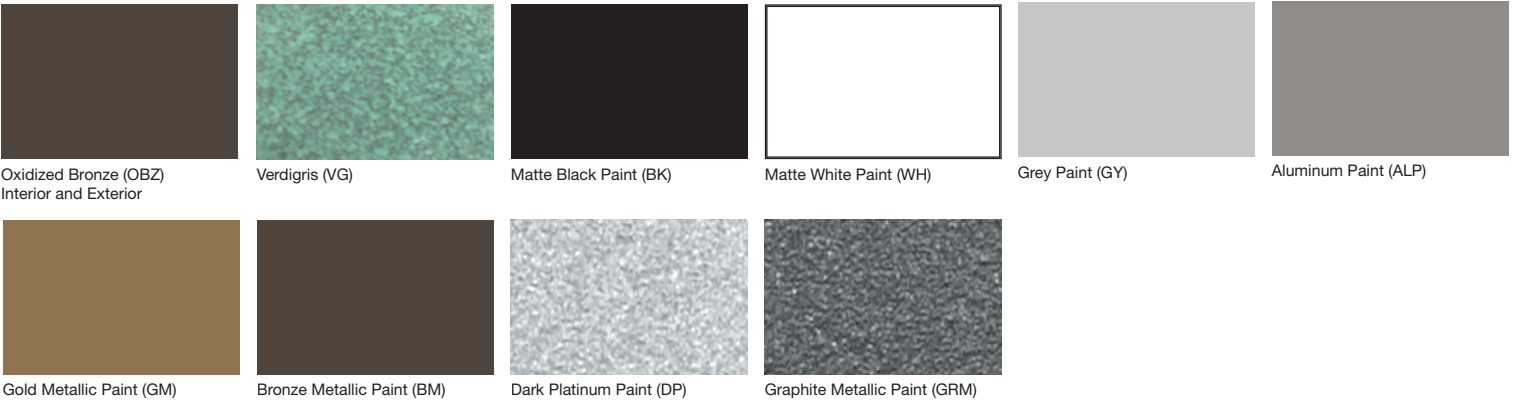


METAL FINISH GUIDE STANDARD: INTERIOR*

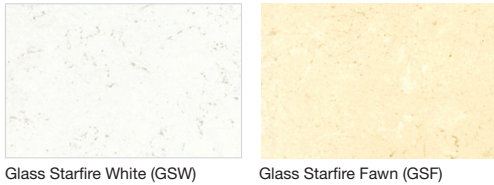


METAL FINISH GUIDE STANDARD: EXTERIOR*



* Standard Metal Finishes shown are graphic representations of the actual finish colors. Variations may occur between the actual color and the images shown on this page. Please contact your Cooper Lighting representative for a color sample chip.

HAND APPLIED COLORS**



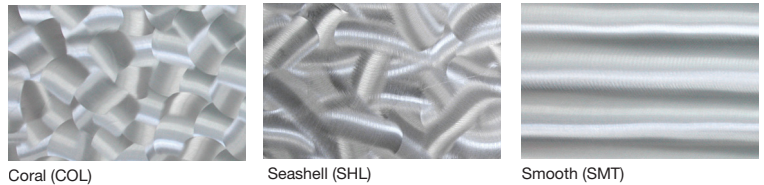
HAND PAINTED LEAF COLORS**



HAND PAINTED FAUX COLORS**

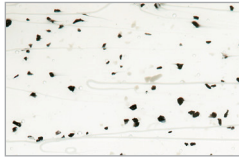


DECORATIVE METAL PATTERNS

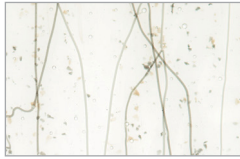


Specifications and dimensions subject to change without notice. Consult your Cooper Lighting Representative or visit www.cooperlighting.com for available options, accessories and ordering information.

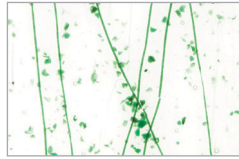
RECESSED PENDANT (RP) ART AND FRIT GLASS**



497-RP Gray and Black Frit with White Streamers (GBMG)



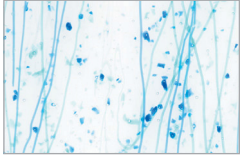
497-RP Gray and Bronze Frit with Gray and Vanilla Streamers (GYMG)



497-RP Dark Green and Jade Green Frit with Dark Green Streamers (CBMG)



497-RP Red Frit and Streamers (RDMG)



497-RP Royal Blue and Turquoise Frit and Streamers (BTMG)



498-RP Textured Warm White Glass (WG)

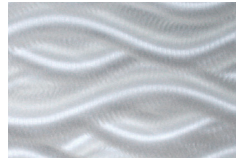


498-RP Textured Carmel Swirl Glass (CG)

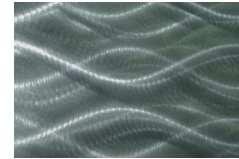
** Farallon glass. RP glass and mesh are expertly handcrafted. No two luminaires are identical and the colors will vary from lot to lot. Colors will differ between the monitor settings and variations may occur between the actual color and the images shown on this page. Please contact your Cooper Lighting representative for a color sample chip.

DECORATIVE METAL COLORS

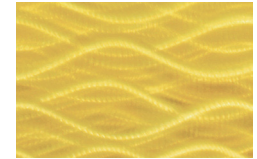
Shown in Waves Pattern



Clear (CLR)



Black Pearl (BPL)



Brass (BRS)



Cabernet (CBT)



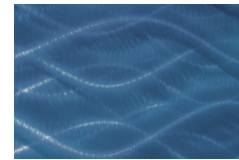
Champagne (CMP)



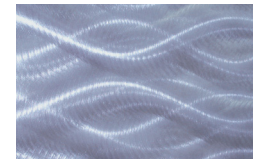
Chocolate (CLE)



Copper (CPR)



Indigo (IDO)



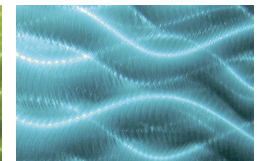
Pewter (PWR)



Royal Blue (RBE)



Sage (SGE)



Sapphire (SPE)



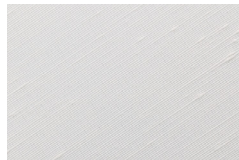
Slate Green (SGN)

FABRIC FINISH GUIDE STANDARD

101, 102, 103 and 104 Series



Shantung White (SWH)



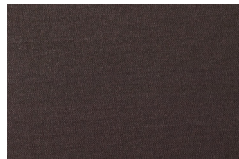
Shantung Eggshell (SEG)



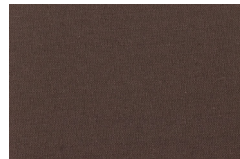
Shantung Beige (SBG)



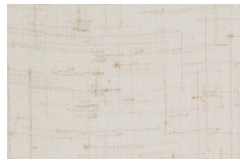
Apex (APX)



Chintz Onyx (CXH)



Chintz Chocolate (CCT)



Glasgow Flax (GFX)



Earth Dust (EDT)*



Silver Moon (SMO)*



White Mist (WMT)*

* 101-P-SIS Only

FABRIC FINISH GUIDE

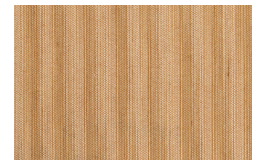
105 Series



Grass Cloth (GSH)



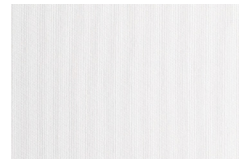
Paper Leaf (PPF)



Nutmeg Shimmer (NGS)



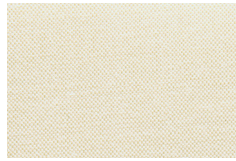
Bronze Shimmer (BZS)



Linen Alabaster (LAT)



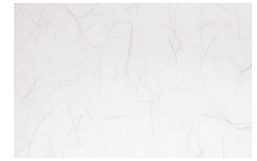
Linen Biscuit (LBS)



Silk Ivory (SIY)



Silk White (SIW)



White Krinkle (WHK)



Linen Chopsticks (LCK)

Specifications and dimensions subject to change without notice. Consult your Cooper Lighting Representative or visit www.cooperlighting.com for available options, accessories and ordering information.