

# SPJ-FB-LS-2

## SPECIFICATION FEATURES

**Electrical:** Available in 12V  
**Labels:** UL Wet Listed

**Quick Connect • 90 CRI • IP67 Rated**



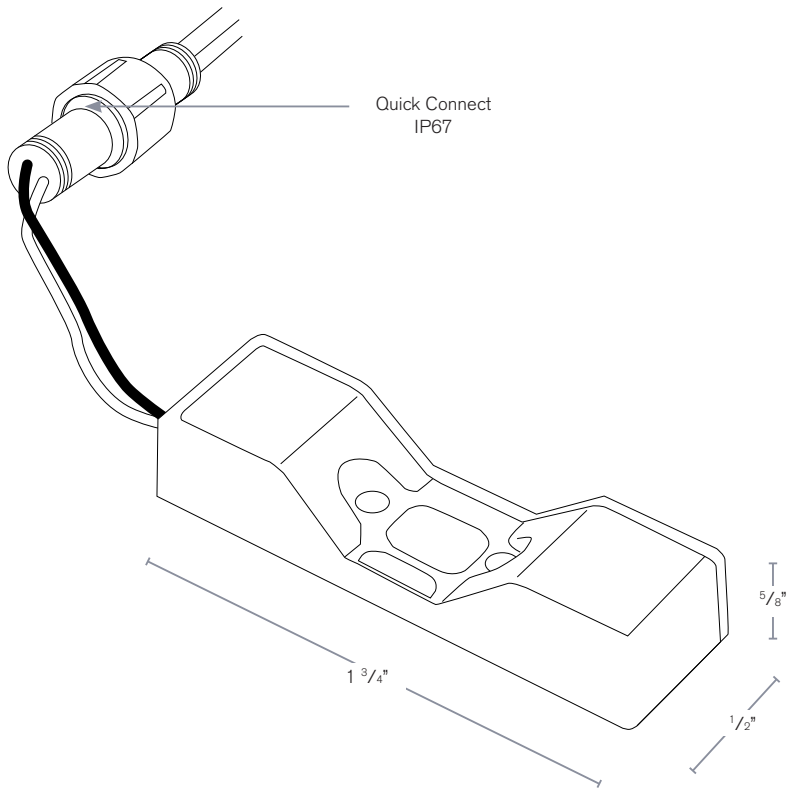
Model: **SPJ-FB-LS-2-150**  
Model: **SPJ-FB-LS-2-200**

### Forever Bright Engine

#### DESCRIPTION

**Model#:** SPJ-FB-LS-2-150  
SPJ-FB-LS-2-200  
**Electrical:** 12V  
**Color Temp:** 2700K  
**Mounting:** Quick Connect

MODEL #	WATTAGE	LUMENS
SPJ-FB-LS-2-150	2	150
SPJ-FB-LS-2-200	2	200



SPJ Approval	Customer Approval

#### ORDERING INFORMATION

Model#	Wattage	Lumens	Electrical	Color Temp.
<input type="text"/>	<b>2W</b>	<input type="text"/>	<b>12V</b>	<input type="text"/>
SPJ-FB-LS-2-150 SPJ-FB-LS-2-200		150 200		2700K 4000K 5000K