

PROTEK COLLECTION

SPECIFICATIONS

- 120-277V INPUT VOLTAGE, 50/60Hz
- CONSTANT CURRENT AT 700 MILLIAMPS
- DRIVER UL CLASS 2, POWER FACTOR > .90
- OPERATING TEMPERATURE -18°C (0°F) TO 40°C (104°F) (25°C NOMINAL)
- ESTIMATED 50,000 HRS L₇₀*
- THERMALLY PROTECTED LED ARRAY
- POLYCARBONATE BASE AND DIFFUSER
- MOLDED OF DURABLE NON-CORROSIVE UV RESISTANT PLASTICS
- WALL OR CEILING MOUNT
- UL/CUL LISTED FOR WET LOCATION
- STANDARD PACK QTY: 6



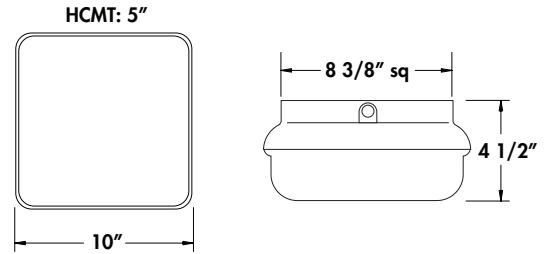
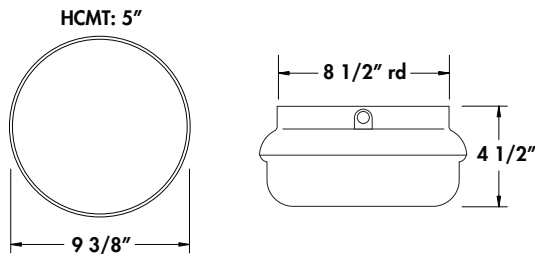
ASSEMBLED IN USA



SPJ391



SPJ395



EXAMPLE # **SPJ391-L1800C-BWP**

STYLE #	SOURCE/WATTAGE	COLOR TEMP	BODY	DIFFUSER	OPTION
SPJ391 = 10" RD. SPJ395 = 10" SQ.	L1800C = 8 CREE LED ARRAY (18W) 22W POWER INPUT 1824 LUMENS 82 LUMENS PER WATT**	4000K CRI = 74 (TYP)	B = BLACK W = WHITE	W = WHITE	P = PHOTOCELL Photocells are only available for 120V applications

L1800C LED REPLACEMENT PARTS
L18C-DC-700-08-R = 8 CREE LED ARRAY
IG1800-DMV-1 = LED DRIVER

* DATA PER LM80/TM21 @ 1000MA AVAILABLE UPON REQUEST
 ** ESTIMATED FOR LED SOURCE

For more information regarding SPJ Lighting's LED Fixtures and Custom Packaging please contact our sales department at **800-469-3637** or visit www.spjlighting.com.com



Specifications, design & components subject to change without notice. Printed in U.S.A. © 2012 SPJ Lighting Inc.

1203.1