



Nothing But LED's New T8 Tube offers significant energy efficiency and lifetime improvements over fluorescent lamps. Our T8 Tube is made of full Aluminum housing with PC Cover lens which makes the most durable 8FT tube of its kind. Our lamps are installed by bypassing existing fluorescent ballasts and hard-wiring tombstone lamp-holders directly to incoming AC power leads. Dual-ended bypass lamps eliminate the need to replace shunted tombstone lamp-holders in existing fluorescent luminaires.

Product Features

- Up to 130 Lumens per Watt
- Double End Power
- Available in Clear, Striped & Frosted Lens
- Environmentally friendly without mercury
- Type B with FA8 Base, Double Ended Power & requires ballast bypass.
- Input Voltage 100-277Vac 50-60Hz
- Operating temperature: -20°C to 50°C
- Aluminum Housing with PC Cover
- Environmentally friendly without mercury
- ETL & DLC Listed
- 5 Year warranty

LED T8 GLASS TUBE NOTHING BUT LEDS

SKU #	Model #	Watt	Lumens	CCT	Lens	Dimming	Power	Base	Length	Certifications
1560251	ZS-T8-60P8FT-FA8-FT(5000K)	60W	7800Lm	5000K	Frosted	Triac Dimmable	Double Ended	FA8	8ft	ETL & DLC
1560247	ZS-T8-60P8FT-FA8-SN(6500K)	60W	7800Lm	6500K	Striped	N/A	Double Ended	FA8	8ft	ETL
1560250	ZS-T8-60P8FT-FA8-CN(6500K)	60W	7800Lm	6500K	Clear	N/A	Double Ended	FA8	8ft	ETL

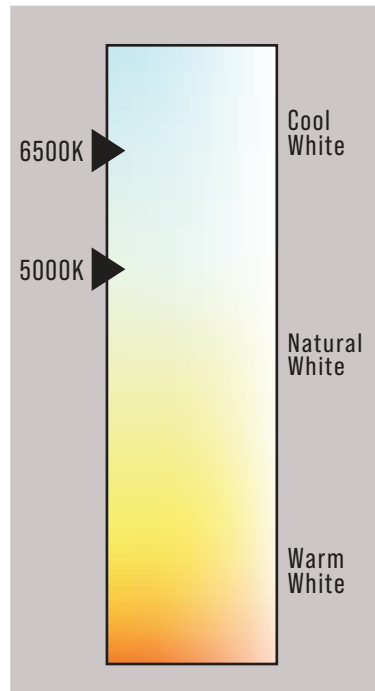
SKU: 1560251 Specifications

Parameter	Description	Value
General Performance	Wattage	60W
	Lumen	7800Lm
	Lumen Efficacy	Up to 130LM/W
	Color Temperature	5000K
	CRI (Ra)	>80
	Beam Angle	180° Degree
	Diffuser Type	Frosted
Electrical	Input Voltage	100-277Vac
	Frequency	50/60Hz
	Dimming	Triac Dimmable
	Power Factor	>0.9
Physical	Operating Temperature	-55°C - 50°C
	Operating Humidity	N/A
	Storage Temperature	N/A
	Storage Humidity	N/A
	LED Brand	San'an
	LED Type	SMC2835
Qualification	Housing Material	Aluminum + PC
	Housing Color	White
	IP Rating	IP22
	Warranty	5 Year

SKU: 1560247 & 1560250 Specifications

Parameter	Description	Value
General Performance	Wattage	60W
	Lumen	7800Lm
	Lumen Efficacy	Up to 130LM/W
	Color Temperature	6500K
	CRI (Ra)	>80
	Beam Angle	180° Degree
	Diffuser Type	Striped / Clear
Electrical	Input Voltage	100-277Vac
	Frequency	50/60Hz
	Dimming	N/A
	Power Factor	>0.9
Physical	Operating Temperature	-55°C - 50°C
	Operating Humidity	N/A
	Storage Temperature	N/A
	Storage Humidity	N/A
	LED Brand	San'an
	LED Type	SMC2835
	Housing Material	Aluminum + PC
Qualification	Housing Color	White
	IP Rating	IP22
	Warranty	5 Year

Correlated Color Temperature (CCT)



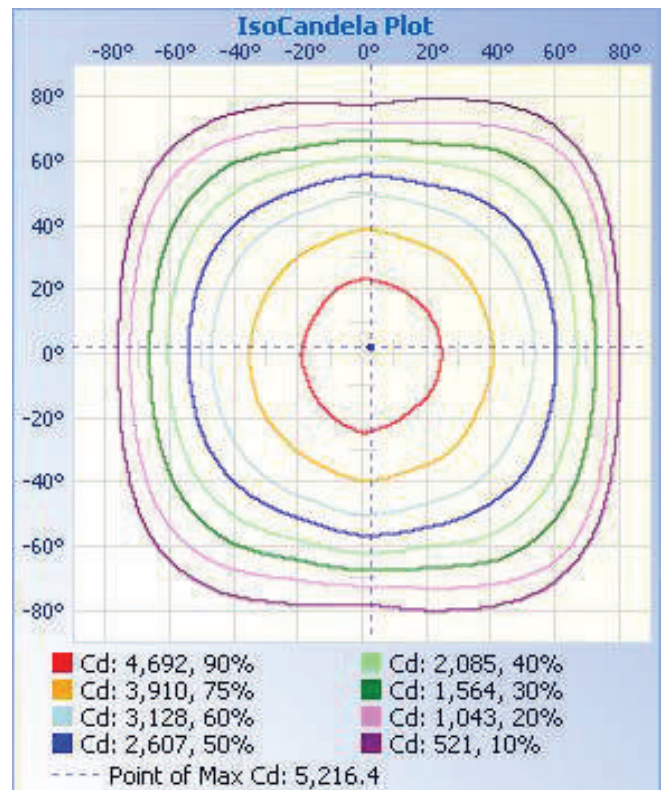
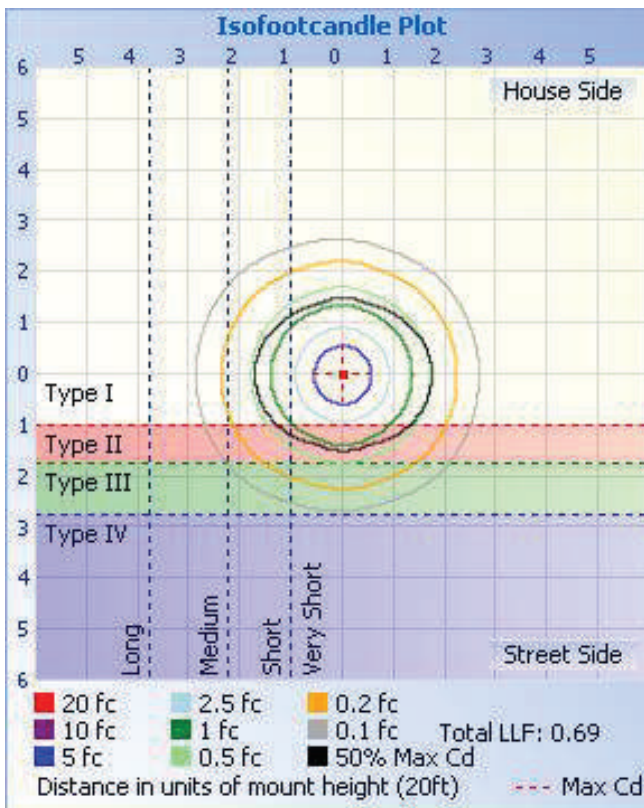
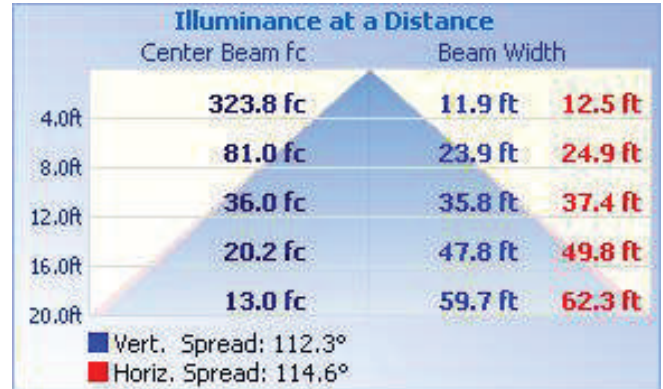
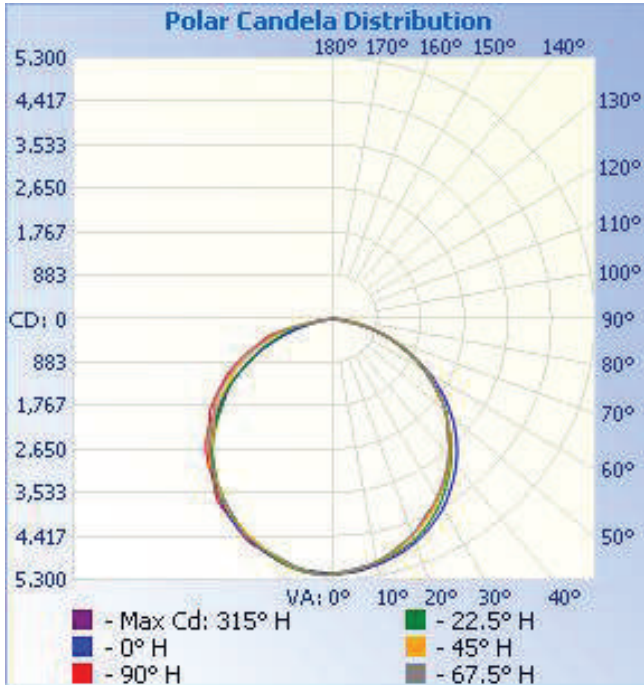
Dimension



Accessories



Photometric Data



Installation

Please take the time to read this quick installation guide. The guide contains important information and notes regarding installation and operation.

INSTRUCTIONS FOR SELF-BALLAST LED TUBES

STEP 1. SWITCH OFF POWER. TURN OFF POWER TO THE FIXTURE. DISCONNECT THE APPROPRIATE CIRCUIT BREAKER PRIOR TO OPENING THE FIXTURE FOR ANY REASON. IF FIXTURE HAS BATTERY BACKUP, ENSURE POWER IS OFF. VERIFY VOLTAGE ON THE FIXTURE IS BETWEEN 100-277V.

DO NOT INSTALL LED TUBE LIGHT IF VOLTAGE IS NOT BETWEEN 100-277V!!

STEP 2. REMOVE FLUORESCENT TUBE. REMOVE THE OLD FLUORESCENT TUBES AND RECYCLE. REFER TO THE EPA.GOV WEBSITE FOR FLUORESCENT TUBE RECYCLING INSTRUCTIONS. IDENTIFY THE BALLAST LOCATION AND REMOVE ANY COVERS TO EXPOSE BALLAST AND WIRES. IF A LUMINARIE DISCONNECT IS AVAILABLE, DISCONNECT IT NOW.

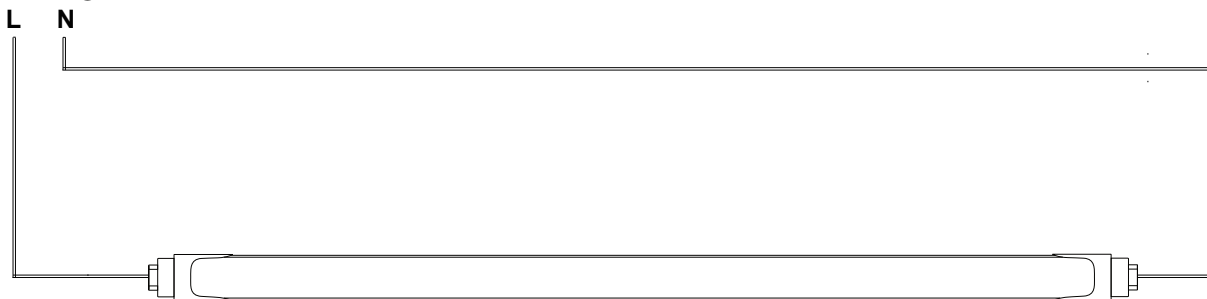
STEP 3. BYPASS THE BALLAST ACCORDING THE ELECTRICAL WIRING DIAGRAM ON THE TUBE LIGHT. IDENTIFY THE HOT AND NEUTRAL WIRES RUNNING FROM THE BREAKER BOX TO THE BALLAST AND CONFIRM THE POWER IS OFF USING A VOLTMETER OR TESTER.

(REFER TO THE ELECTRICAL TESTER'S INSTRUCTIONS FOR PROPER USE). LABEL OR TAKE NOTE OF THESE WIRES, THEY WILL BE USED LATER IN THE INSTALL.

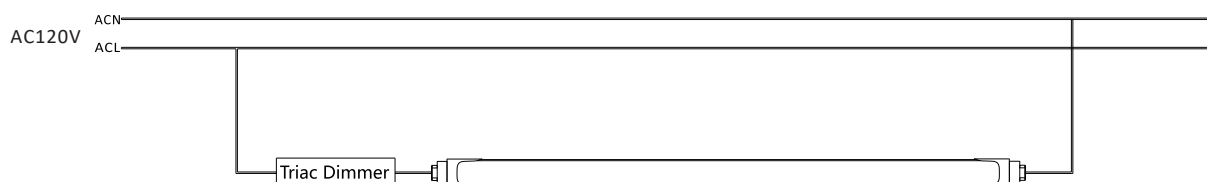
STEP 5. REINSTALL THE BALLAST COVER TO HIDE ALL WIRES. AFFIX THE FIXTURE MODIFICATION LABEL TO THE BALLAST COVER OR ANY OTHER LOCATION VISIBLE WHEN DIFFUSION COVER IS REMOVED. INSTALL THE NEW LED T8 TUBES.

STEP 6. ONCE YOU HAVE CONFIRMED ALL STEPS HAVE BEEN FOLLOWED AND THE FIXTURE HAS BEEN BYPASSED ACCORDING TO THE DIAGRAM BELOW, SWITCH ON THE POWER.

Installation Diagram



Wiring Diagram when Dimming needed (AC 120V ONLY)



For base FA8, G13, R17D

Installation

WARNINGS

This product is double ended bypass Type B LED tube, working without ballast.

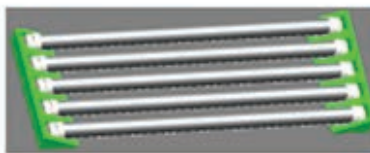
Risk of fire or electric shock. LED Retrofit Kit installation requires knowledge of luminaries' electrical systems. If not qualified, do not attempt installation. Contact a qualified electrician.

Risk of fire or electric shock. Install this kit only in the luminaries that have the construction features and dimensions shown in the photographs and/or drawings and where the input rating of the retrofit kit does not exceed the input rating of the luminaries. Not for use with dimmers.

Not suitable for outdoor use.

Packaging

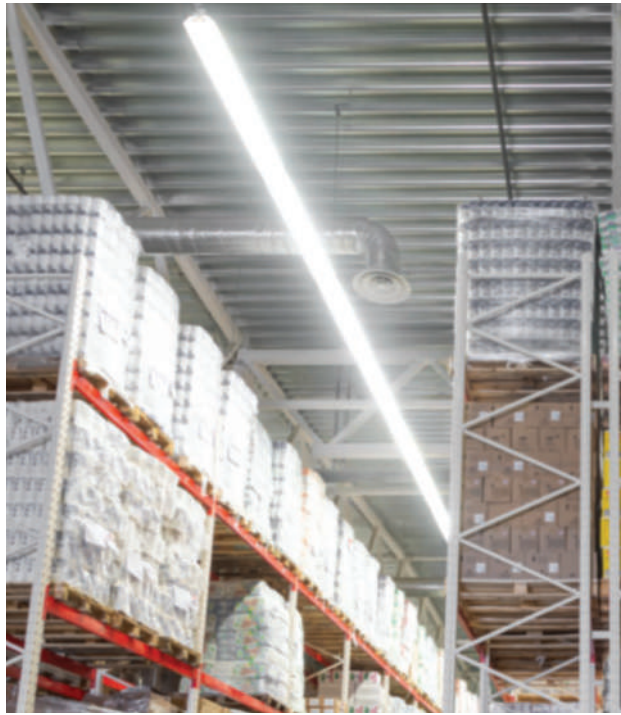
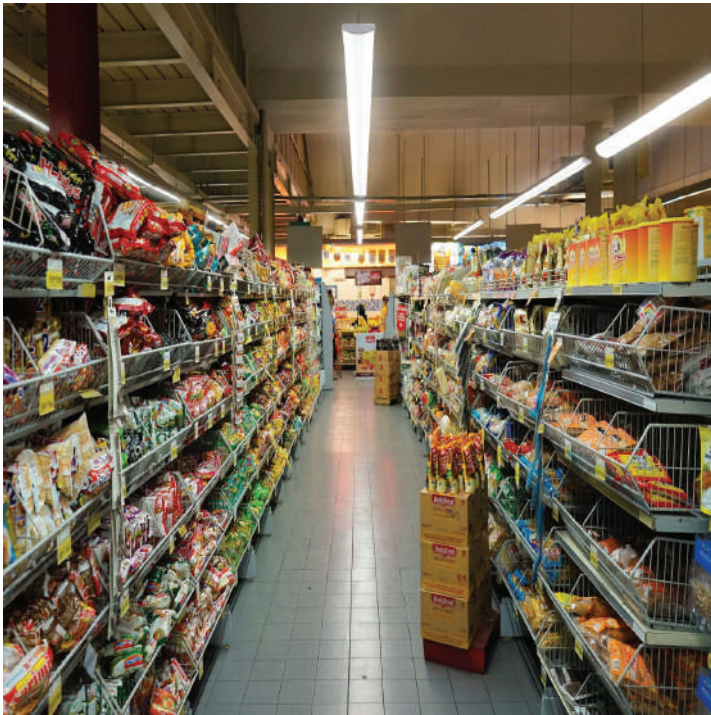
Tube Size	PCS/CTN	Dimensions/Each Tube	Dimensions/One CTN	Weight/One CTN
8Ft	20	93.90 x 1.19 x 1.30	95.6 x 8.66 x 8.27	30.53 lbs



LED T8 GLASS TUBE



Application Picture



Warranty

5 Year Warranty

LED T8 GLASS TUBE