



LED EIN-WL16FR-2030e



Oval Indoor LED Wall Light W/Brushed Nickel Trims & Frosted Plastic Lens

Product Description

With brushed nickel twin bands and a cylindrical shape, this Euri Lighting LED wall light provides a contemporary and low-profile look within any home or office. Using only 12 Watts to output quality brightness every time, this clean and crisp indoor wall light guarantees long-lasting energy efficiency. Suitable for a number of spaces, this LED wall light is available in neutral Soft White (3000K) to create a pleasing and relaxing atmosphere.



Estimated Energy Cost: \$1.50 per year



***Note:** Design, features and specifications subject to change without notice. Some features may not be available on all models. For more information please visit: www.eurilighting.com or call 1-888-743-5766

Specifications

Input Power	Input Voltage	Lumen Output	Beam Angle	Center Beam	CCT
12.5 W	120V/60Hz	1000 lm	125°	N/A	3000 K
CRI	Luminous Efficacy	Power Factor	Input Current	Base/Cap	Lamp Lifespan
80	80 lm/W	0.7	0.1 A	Direct Wiring	50,000 Hrs.

Product Features



Non-Dimmable



Instant-On/Off

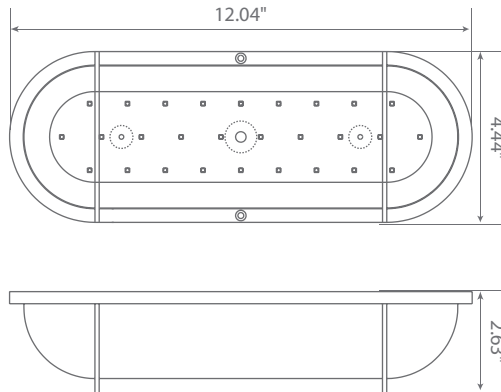


Mercury Free

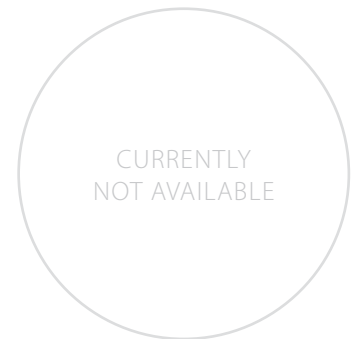


Wet Rated

Product Dimensions



Product Photometric Data



Euri Lighting | A Division of **IRTRONIX** Inc.

20900 Normandie Avenue Bldg. B Torrance, CA 90502 | Tel: 888.743.5766 | Fax: 310.787.1166 | www.eurilighting.com
 ©2018 Euri Lighting. All Rights Reserved