

Our new 2023 LED Grid panels offer uniform illumination and excellent energy savings when you replace traditional T5, T8, or T12 fluorescent troffers. Our LED Grid Panel with diffusing lens for direct lighting is also CCT adjustable & offers multiple Wattage options. A clever choice for illuminating spaces with a lighting fixture that blends with the architectural design of your ceiling, simultaneously creating an elegantly stunning light effect. Perfect for corporate offices, medical/ health, educational facilities and more.

Product Features

- Up to 120 Lumens per watt
- Wattage Adjustable 40W/50W/60W
- CCT Adjustable 3K/3500K/4K/5K/6500K
- Input Voltage 100-277Vac voltage (50-60Hz)
- 0-10V Dimmable
- Ultra light weight, one person install
- Housing material: 6063-T5
- Installs into conventional grid ceiling
- ETL & DLC Listed
- 5 Year warranty

LED GRID PANEL



SKU #	Model #	Wattage Adjustable	Lumens	CCT Adjustable	Size	Dimming	Input Voltage	Certifications
1560790	BLT-FL2*2-K40-3065	20W/30W/40W	Max 4800Lm	3K/3500K/4K/5K/6500K	2x2FT	0-10V	100-277Vac	ETL & DLC
1560656	BLT-FL2*4-K60-3065	40W/50W/60W	Max 7200Lm	3K/3500K/4K/5K/6500K	2x4FT	0-10V	100-277Vac	ETL & DLC

SKU# 1560790

Specifications

Parameter	Description	Value
General Performance	Model #	BLT-FL2*2-K40-3065
	Wattage Adjustable	20W / 30W / 40W
	Lumen	Max 4800Lm
	Lumen Efficacy	Up to 120LM/W
	Color Temperature	3000K / 3500K / 4000K / 5000K / 6500K
	CRI (Ra)	>80
	Beam Angle	120° Degree
	Diffuser Type	PC Cover
Electrical	Input Voltage	100-277Vac
	Frequency	50/60Hz
	Dimming	0-10V
	THD	<10%
	Power Factor	>0.9
	Flicker Percent	N/A
Physical	Operating Temperature	25°C to 2°C
	Operating Humidity	65% RH
	Storage Temperature	-20°C to 45°C
	Storage Humidity	N/A
	LED Brand	N/A
	LED Type	2835
	LED QTY	N/A
Housing Material	PC+Aluminum	
Qualification	Housing Color	White
	IP Rating	IP20
	Warranty	5 Years

SKU# 1560656

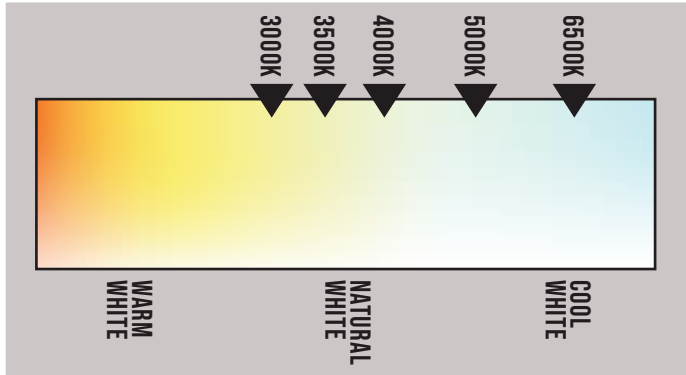
Specifications

Parameter	Description	Value
General Performance	Model #	BLT-FL2*4-K60-3065
	Wattage Adjustable	40W / 50W / 60W
	Lumen	Max 7200Lm
	Lumen Efficacy	Up to 120LM/W
	Color Temperature	3000K / 3500K / 4000K / 5000K / 6500K
	CRI (Ra)	>80
	Beam Angle	120° Degree
	Diffuser Type	PC Cover
Electrical	Input Voltage	100-277Vac
	Frequency	50/60Hz
	Dimming	0-10V
	THD	<10%
	Power Factor	>0.9
	Flicker Percent	N/A
Physical	Operating Temperature	25°C to 2°C
	Operating Humidity	65% RH
	Storage Temperature	-20°C To 45°C
	Storage Humidity	N/A
	LED Brand	N/A
	LED Type	2835
	LED QTY	N/A
	Housing Material	PC+Aluminum
Qualification	Housing Color	White
	IP Rating	IP20
	Warranty	5 Years

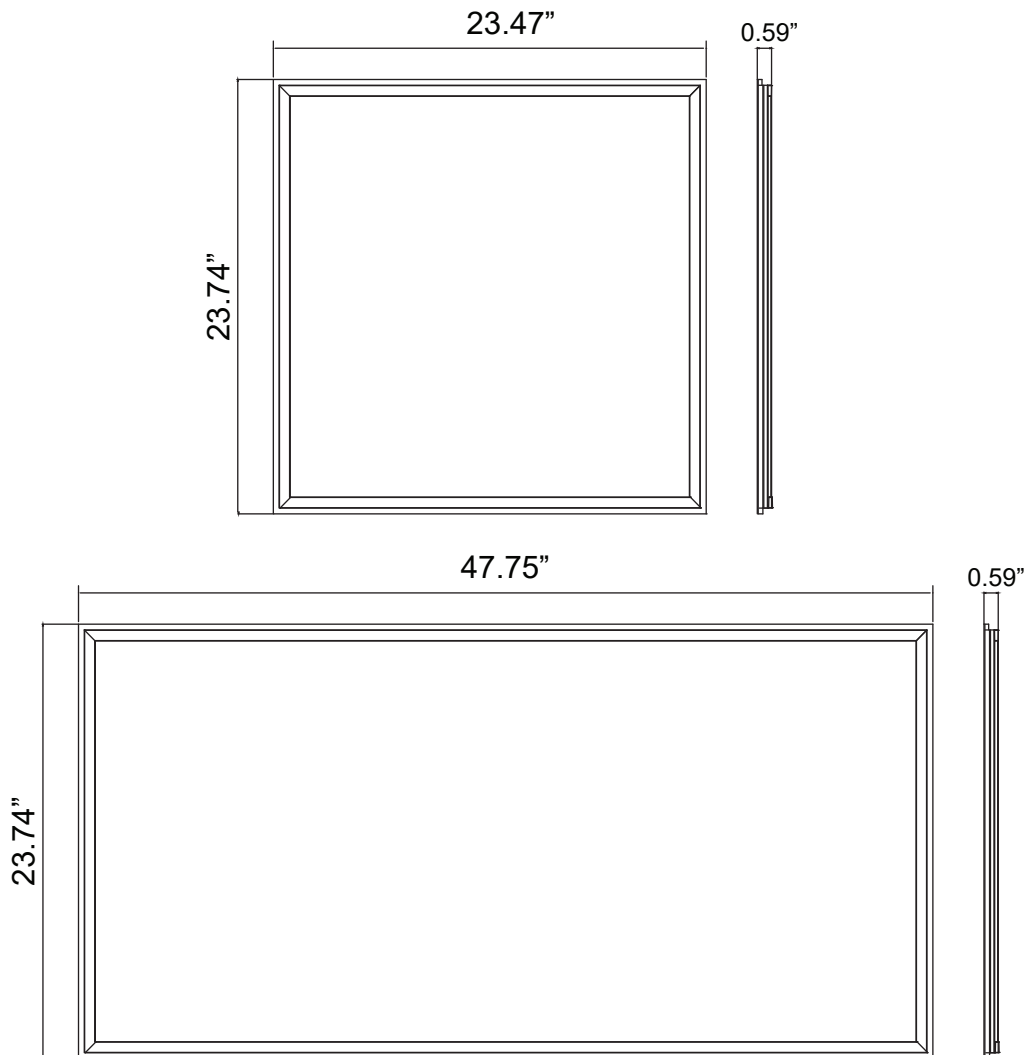
LED GRID PANEL



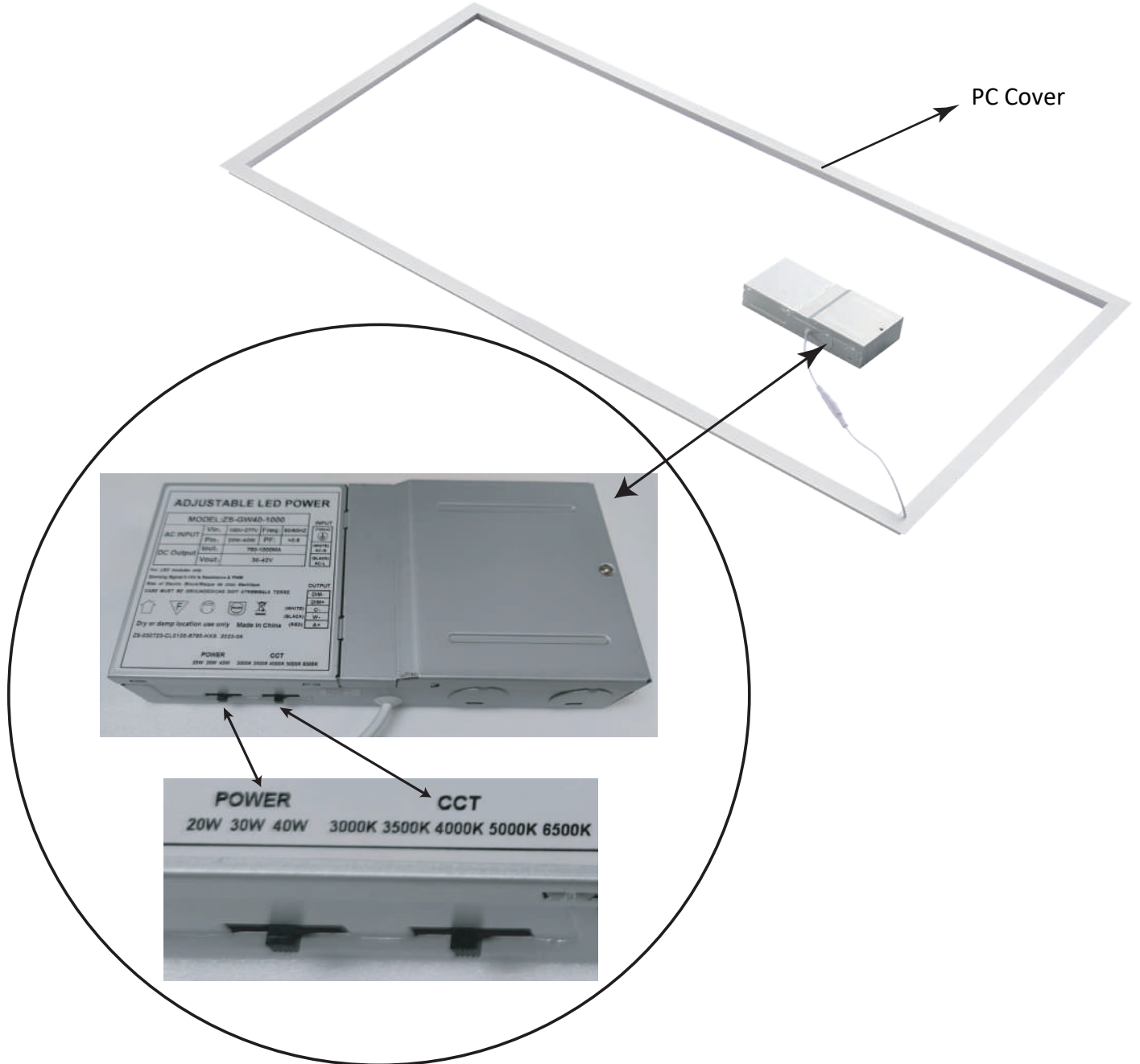
Correlated Color Temperature (CCT)



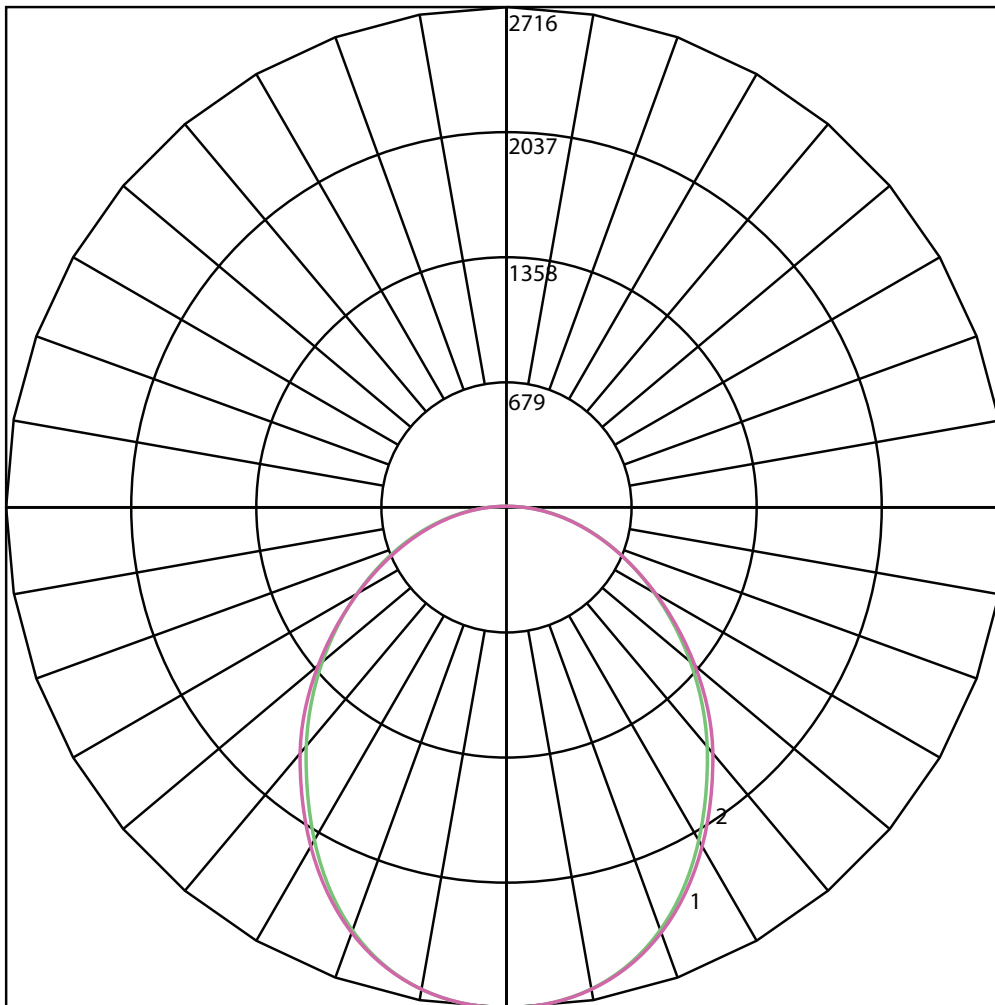
Dimensions



Product Structure



Polar Curve of 3000K

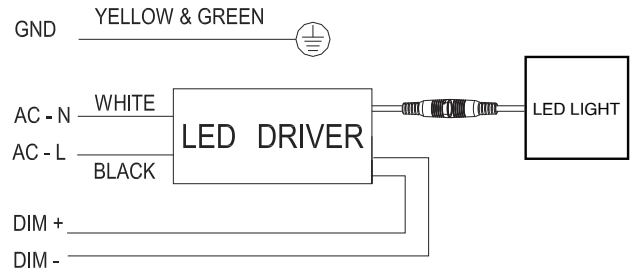
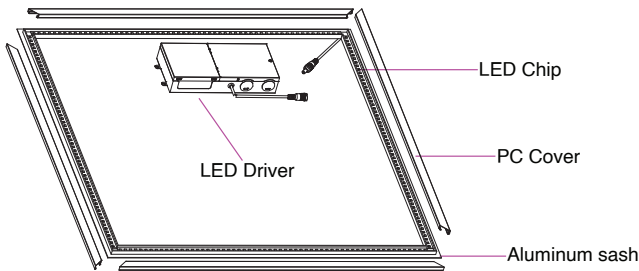


Maximum Candela = 2715.561 Located At Horizontal Angle = 0, Vertical Angle = 0

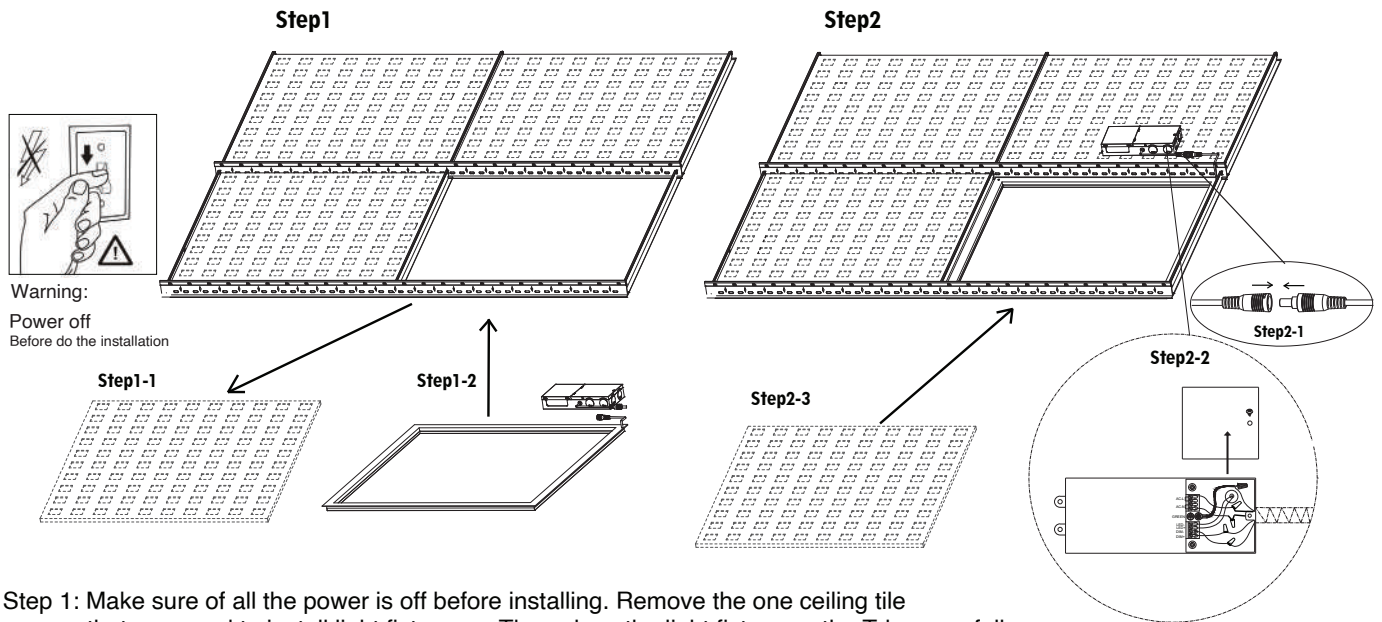
#1 - Vertical Plane Through Horizontal Angles (0 - 180)

#2 - Vertical Plane Through Horizontal Angles (90 - 270)

Installation



INSTALLATION INSTRUCTION



Step 1: Make sure of all the power is off before installing. Remove the one ceiling tile that you need to install light fixture on. Then place the light fixture on the T-bar carefully and make sure it is correctly in place and secure.

Step 2: Place the driver on top of the next ceiling tile. Connect the cable between the driver and the lighting fixture.

Step 3: Open the driver's junction box and connect the AC wire to the driver correctly (L=black & N=white)

Warning:

Ensure the power supply has been cut off before connecting the wire, and all wiring and installation of this product are required to be operated by professionals.

LED GRID PANEL



Packaging

SKU	Carton (Inch)	Size	Qty / Carton	Net Weight	Gross Weight
1560656	49.21 x 5.51 x 25.19	2 x 4	4 PCS	11 LBS	15.5 LBS
1560790	25.20 x 5.51 x 25.20	2 x 2	4 PCS	8.8 LBS	10.2 LBS

Warranty

5 Year Warranty

Application Images



Application Images

