

LED LINKABLE FIXTURES



Nothing But LED's Linkable T8 LED Integrated Lamps perform efficiently in conditions where low voltage, halogen, or fluorescent luminaires have traditionally been used. Our LED tubes incorporate integral drivers, are self-supporting and can be surface mounted. Individual units can be plugged together for continuous lengths up to 200W. Our Linkable Tubes connect directly to line voltage and can be used in any interior space.

Product Features

- Efficacy up to 140 Lumens per watt
- Input Voltage 100-277Vac 50-60Hz
- Dimming Traic Dimmable
- Operates directly from line voltage
- Usable as a stand alone fixture
- Linkable up to 200W at AC120V
- Aluminum and PC housing
- ETL Listed
- 5 Year warranty

LED LINKABLE FIXTURES



| SKU # | Model # | Watt | Lumens | CCT | Size | Lens | Dimming | Input Voltage | Certifications |
|---------|------------------------------|------|--------|-------|------|---------|----------------|---------------|----------------|
| 1560744 | BLT-T8-30P4FT-INT26500K-S | 30W | 4200Lm | 6500K | 4FT | Striped | Triac Dimmable | 100-277Vac | ETL |
| 1560777 | BTL-T8-30P4FT-INT2(6500K)-CT | 30W | 4200Lm | 6500K | 4FT | Clear | Triac Dimmable | 100-277Vac | ETL |
| 1560778 | BTL-T8-60P8FT-INT2(6500K)-CT | 60W | 8400Lm | 6500K | 8FT | Clear | Triac Dimmable | 100-277Vac | ETL |
| 1560811 | BTL-T8-60P8FT-INT2(6500K)-S | 60W | 8400Lm | 6500K | 8FT | Striped | Triac Dimmable | 100-277Vac | ETL |

SKU: 1560744/1560777 Specifications

| Parameter | Description | Value |
|---------------------|-----------------------|---------------------|
| General Performance | Wattage | 30W |
| | Lumen | 4200Lm |
| | Lumen Efficacy | Up to 140LM/W |
| | Color Temperature | 6500K |
| | CRI (Ra) | >80 |
| | Dimming | Triac Dimmable |
| | Beam Angle | 100° Degree |
| | Diffuser Type | Striped / Clear |
| Electrical | Input Voltage | 100-277Vac |
| | Frequency | 50/60Hz |
| | Power Factor | >0.95 |
| Physical | Operating Temperature | -30°C to 65°C |
| | Operating Humidity | N/A |
| | Storage Temperature | N/A |
| | LED Type | SMC2835 |
| | Housing Material | Aluminum + PC Cover |
| Qualification | Housing Color | White |
| | IP Rating | IP22 |
| | Warranty | 5 Year |

LED LINKABLE FIXTURES

SKU: 1560778/1560811

Specifications

| Parameter | Description | Value |
|---------------------|-----------------------|---------------------|
| General Performance | Wattage | 60W |
| | Lumen | 8400Lm |
| | Lumen Efficacy | Up to 140LM/W |
| | Color Temperature | 6500K |
| | CRI (Ra) | >80 |
| | Dimming | Triac Dimmable |
| | Beam Angle | 100° Degree |
| | Diffuser Type | Striped / Clear |
| Electrical | Input Voltage | 100-277Vac |
| | Frequency | 50/60Hz |
| | Power Factor | >0.95 |
| Physical | Operating Temperature | -30°C to 65°C |
| | Operating Humidity | N/A |
| | Storage Temperature | N/A |
| | LED Type | SMC2835 |
| | Housing Material | Aluminum + PC Cover |
| Qualification | Housing Color | White |
| | IP Rating | IP22 |
| | Warranty | 5 Year |

LED LINKABLE FIXTURES

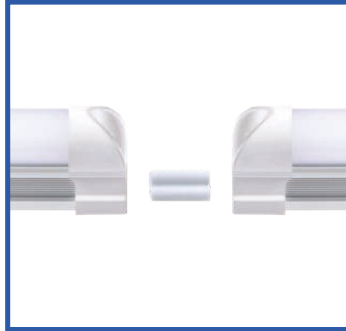


Accessories

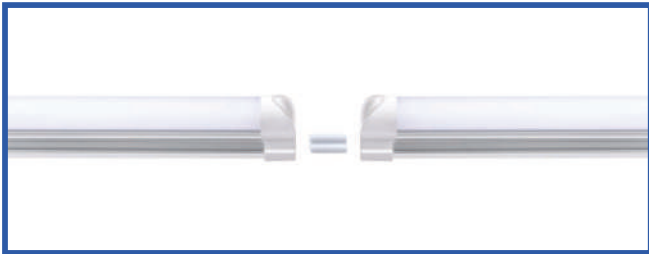
Linkable Options



Mounting Clips



Linkable Options



Linkable Options Mounting Clips

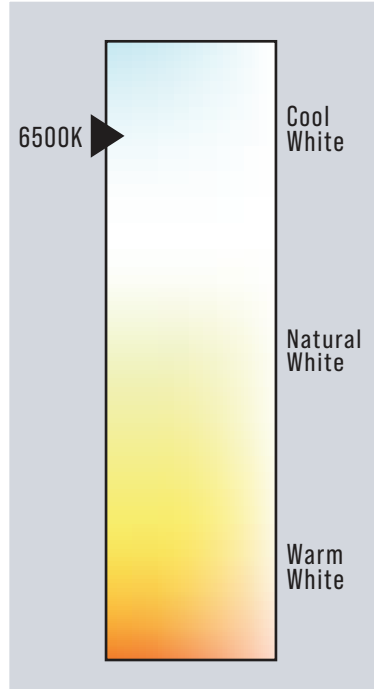


Installation, Hanging

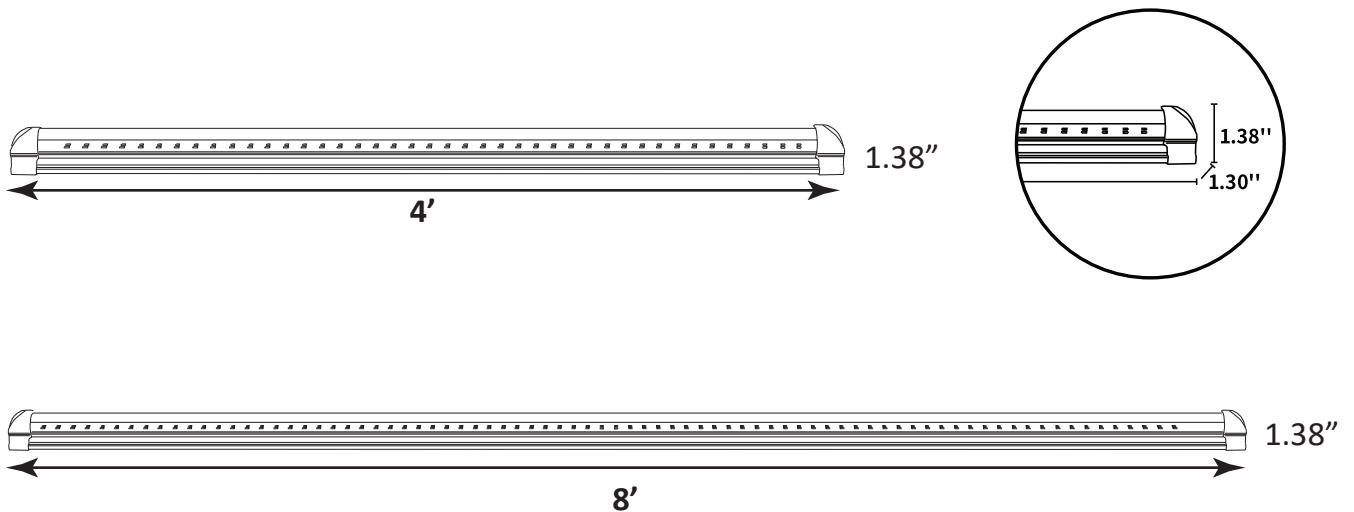


LED LINKABLE FIXTURES

Correlated Color Temperature (CCT)



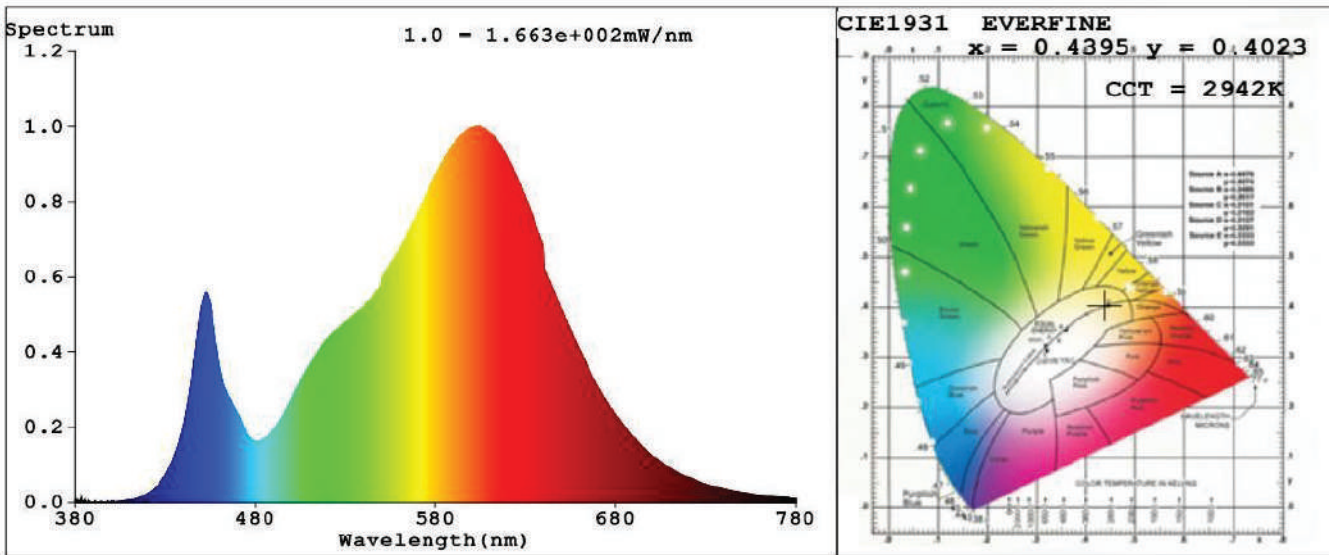
Dimension



LED LINKABLE FIXTURES



Distribution Diagram



Chromaticity Measurement - Sphere - Spectroradiometer

Method (Self-absorption)

| Parameter | Result |
|-----------------------------|---------------------|
| Test Voltage (V) | 120 |
| Frequency (Hz) | 60 |
| CCT (K) | 2942 |
| Duv | -0.0011 |
| Chromaticity (x, y) | x=0.4395 y=0.4023 |
| Chromaticity (u', v') | u'=0.2530 v'=0.5211 |
| Color Rendering Index (CRI) | 80 |
| R9 | 0 |

| Special Color Rendering Indices | | | |
|---------------------------------|----|-----|----|
| R1 | 78 | R9 | 0 |
| R2 | 90 | R10 | 77 |
| R3 | 96 | R11 | 75 |
| R4 | 77 | R12 | 68 |
| R5 | 78 | R13 | 81 |
| R6 | 87 | R14 | 98 |
| R7 | 80 | R15 | 70 |
| R8 | 54 | -- | -- |

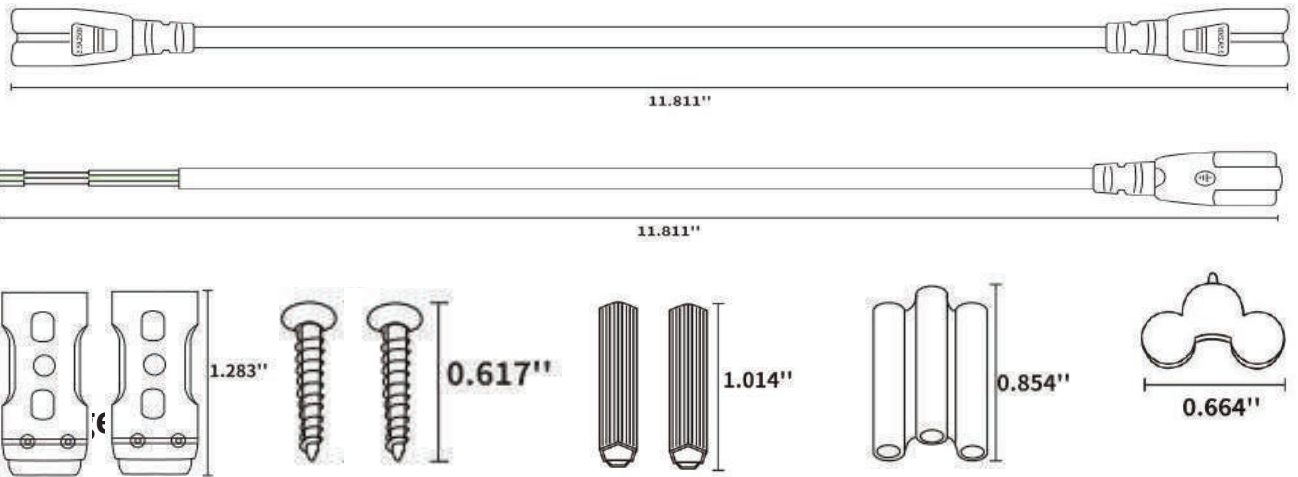
Photometric Measurement - Sphere - Spectroradiometer Method

| Parameter | Results | | DLC V4.4 Pass Criteria | |
|--------------------------|---------|--------|------------------------|-------------|
| Test Voltage (V) | 120 | 277 | -- | |
| Frequency (Hz) | 60 | 60 | | |
| Total Luminous (lm) | 8265 | 8323 | >=375 lm/ft (-10%) | |
| Luminous Efficacy (lm/W) | 135.43 | 137.82 | Standard: >= | Premium: >= |
| | | | 105(-3%) | 130(-3%) |

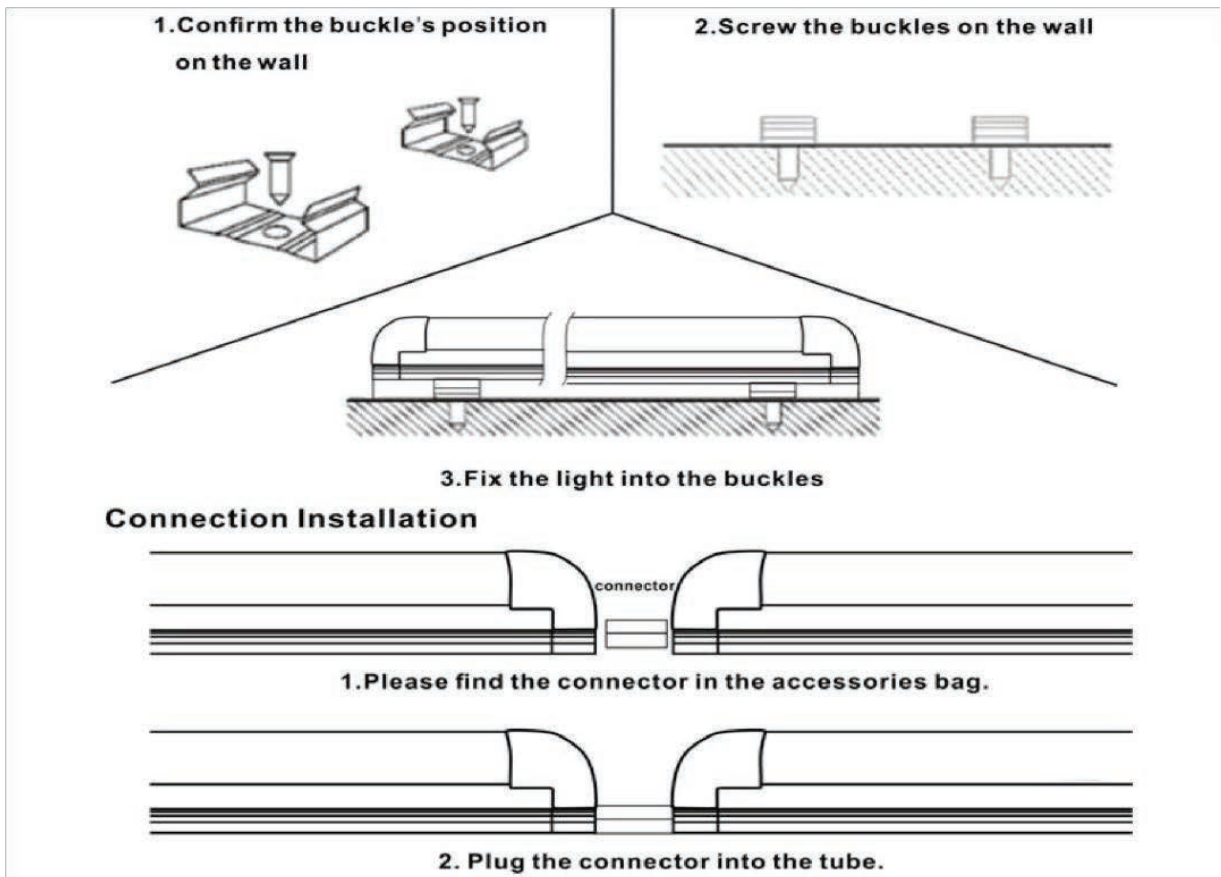
LED LINKABLE FIXTURES

Installation

1. Standard accessories are given below:



2. Installation instruction:



LED LINKABLE FIXTURES



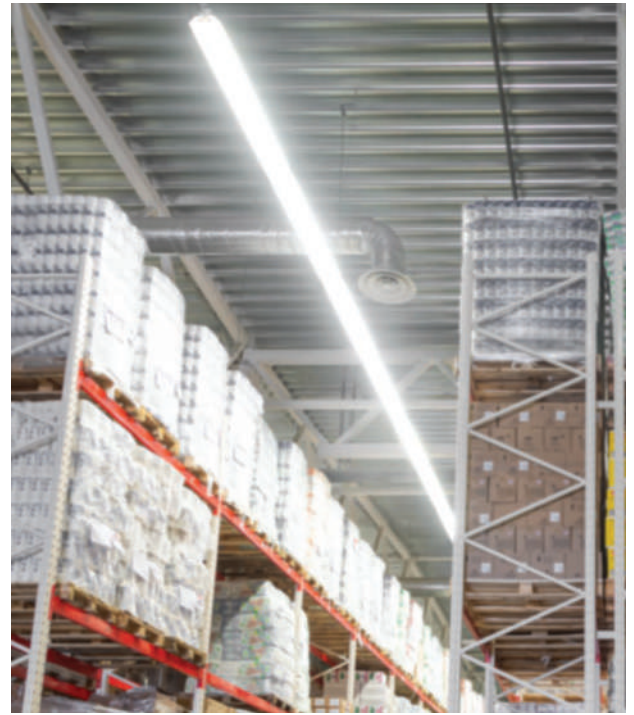
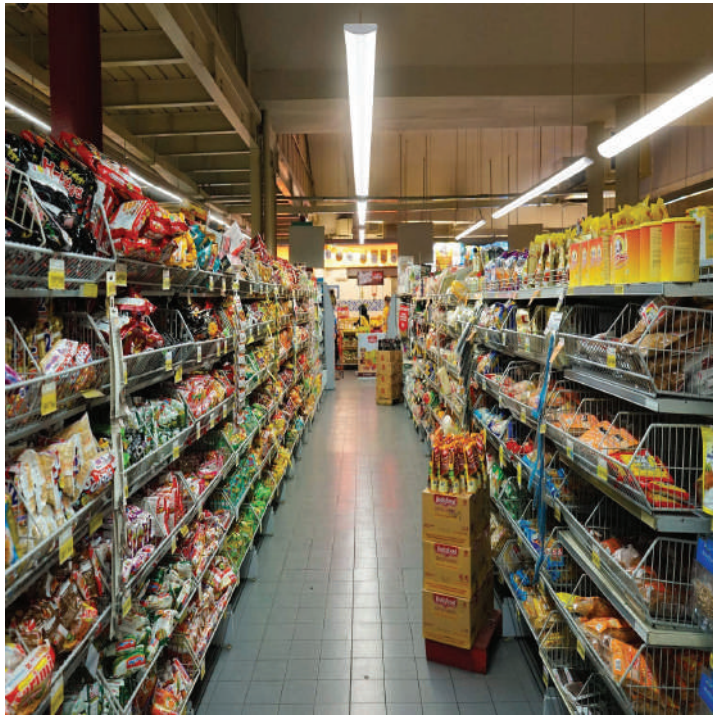
Packaging

| Tube Length | Box Size (Inches) | Box Qty | Box Weight |
|-------------|-------------------|---------|------------|
| 4' | 49.21 x 5 x 5 | 4 Pcs | 7 LBS |
| 4' | 49.21 x 9 x 8 | 20 Pcs | 18 LBS |
| 8' | 95.28 x 5 x 5 | 4 Pcs | 11 LBS |
| 8' | 95.28 x 5 x 8 | 20 Pcs | 34 LBS |



LED LINKABLE FIXTURES

Application Picture



Warranty

5 Year Warranty