




CARBON FILTER

User & Installation Guide



Welcome & Thank you

Here at Herbal House, we are driven to offer our customers high quality equipment that we stand behind. We are devoted to our service and products, don't hesitate to get in touch with any questions.

 matt@herbals.co.nz

 Herbals.co.nz


 70 wharf road, Auckland, NZ



TABLE OF CONTENT

Features	4
What's in the box	5
Setup & Installation	6
Overhead installation.....	8
Reversed flow Setup.....	10
Extra odour filtration.....	11
Service and maintenance.....	12
Imperial product range	13

FEATURES

CORROSION RESISTANT

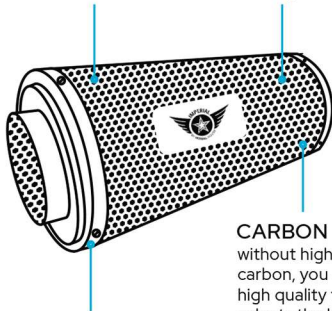
Special coatings are applied to all materials to ensure high humidity and corrosion resistance.

PERFORATED TO PERFECTION

The mesh hole sizing is carefully selected to reduce air flow resistance and improve filtration.

PRE-FILTERS

Two, washable prefilters are included for your filter. These catch dust and other particles adding a layer of protection to your filter.

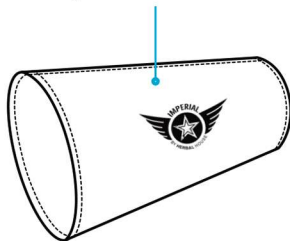


REVERSABLE FLANGE

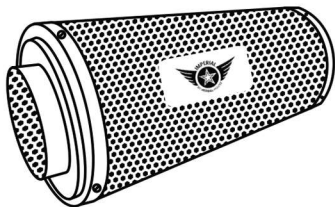
Imperial filter flange and end cap can be removed and swapped around to prolong the lifespan and saturation of the carbon in the filter by means of even airflow

CARBON GRADE

without high quality carbon, you don't have a high quality filter. Imperial selects the highest rated carbon on the market for its filters in all sizes.



WHAT'S IN THE BOX



IMPERIAL CARBON
FILTER

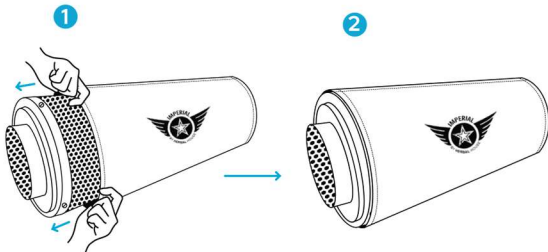


WASHABLE PREFILTER
(X2)

SETUP & INSTALLATION

STEP 1.

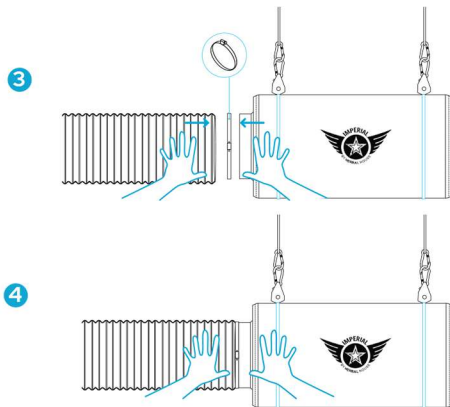
Pick a prefilter you wish to fit. Pull the prefilter over the carbon filter, ensuring the sleeve is covering the body of the filter.



STEP 2.

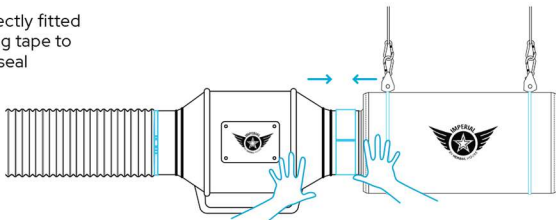
connect your ducting to the filter flange and secure with a hose clamp or suitable tape.

ducting can be a tight fit to the filter flange.



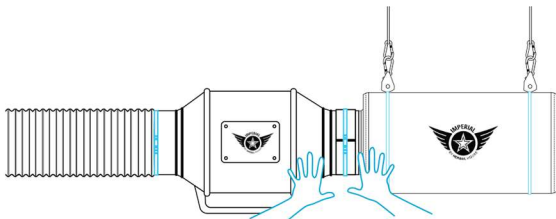
STEP 2. ALTERNATIVE.

The carbon filter can be directly fitted to your fan equipment. Using tape to secure the connection and seal between the two.



STEP 3.

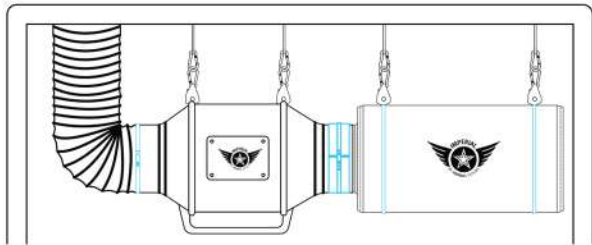
Test the seal between the connected fan/filter/ducting is tight and not allowing air to bypass the filter



OVERHEAD INSTALLATION

STEP 4.

Suspending equipment from the ceiling is a great way to extract more heat from the grow space in the warmer months. Also, saving on valuable floor space.



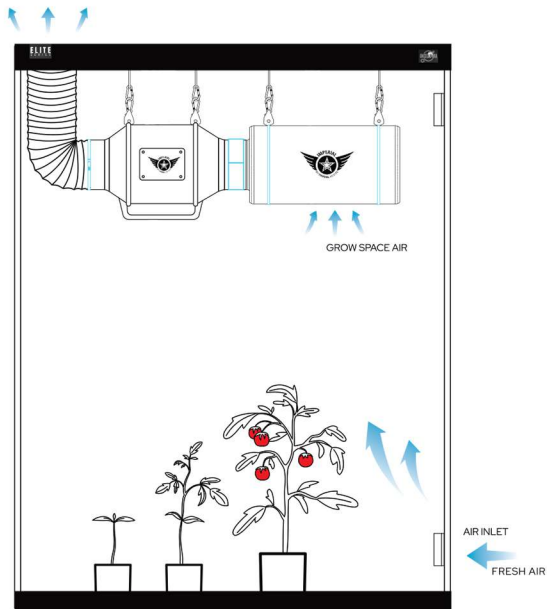
Adjustable ratchet hangers are useful for suspended installation. Remember, the fan can be installed outside of the tent if need be.

EQUIPMENT IN OPERATION.

In this installation, running the ventilation will draw air through the filter and expel filtered air outside of the grow space.

This is known as a 'negative pressure' install. What this means is you can open up an inlet to allow fresh air to naturally pull into the grow space without requiring intake fans.

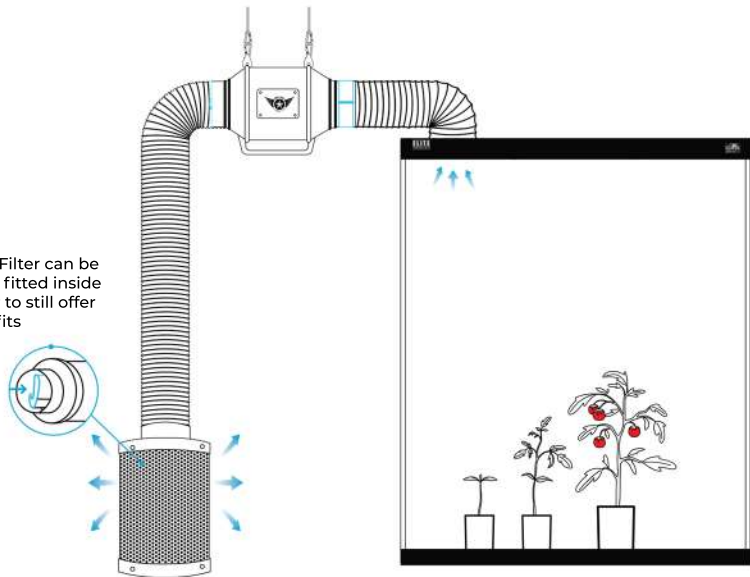
We suggest the inlet be on the opposite side of the grow space to the extraction/filter. This helps ensure more consistent fresh air changes.



REVERSED FLOW SETUP

When working with a limited capacity grow space and fitting the filter inside is not an option, a reversed flow installation is the solution. 'Pushing' Air through the filter is still an effective way to scrub unwanted odour. Meaning you can have a grow space with as minimal equipment inside as possible.

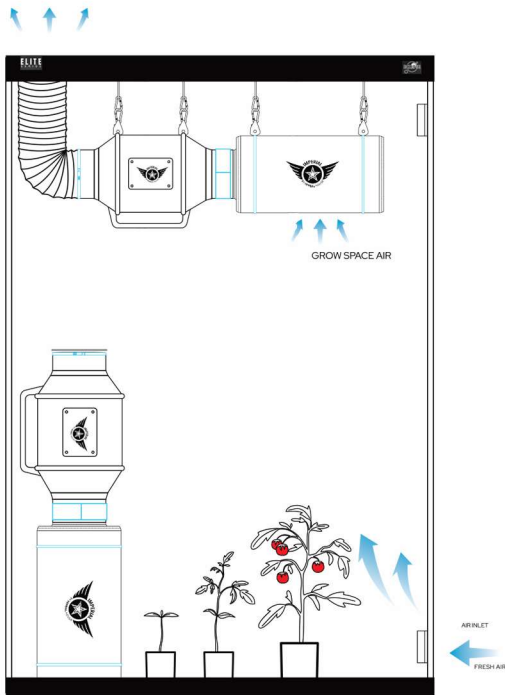
This setup will still create a negative pressure within the grow space.



The Pre-Filter can be carefully fitted inside the filter to still offer its benefits

EXTRA ODOUR FILTRATION

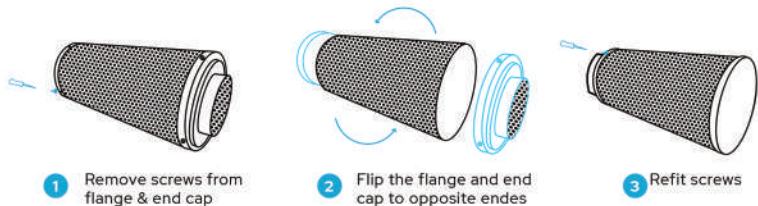
Adding an additional fan and filter setup within the grow space can be used to further scrub unwanted odour. More commonly found on oversized grow spaces where additional filtering is there to ensure complete odour control



SERVICE AND MAINTENANCE

REVERSING THE AIR FLOW THROUGH THE FILTER

The Flange and End Cap of your Imperial Filter can be removed and flipped. This will help extended the life of your filter. Helping to ensure the carbon within the filter is getting saturation.



PRE-FILTER CLEANING

Periodically washing the PreFilter will extend your Carbon Filters expected life. This can be washed when visibly dirty.



Gentle machine wash or hand wash is most suitable

IMPERIAL PRODUCT RANGE

INLINE MIXED-FLOW FANS

Mixed Flow Fans are the staple of ventilation. From Grow Tents to Domestic or Commercial heat transfer systems, these are the daily work horse with affordability and reliability in mind.

Two-speed selectable switch and service friendly housing.
Available in 100mm, 150mm, 200mm.



CENTRIFUGAL FANS

Commercial grade and focus, where power and pressure drop resistance are a must. The blade and motor design works well under load, meaning multi-layer filters are not going to restrict fan performance.

Compatible with the Imperial Fan Speed controller.
Available in 100mm, 150mm, 200mm



CARBON FILTERS

Imperial ventilation offers a range of different sizes to suit a range of different situations, from indoor growing to any volatile-organic-compound filtration. All filters include pre-filter sleeves and swappable flange caps to extend your imperial filters longevity.

Compatible with all manner of fans.

