

Clamp Mounts

JKPANELMOUNTTJ02 / 03



- Solid Fixation
- Good-looking Application
- Easy integration
- High quality stainless steel



With this clamp mount solution, it is easy to integrate your capacitive device into any machine or server door. It will make sure there is a solid fixation and good-looking application for any place. It makes the device IP65 proof, due to the perfect fit.

It works on nearly all the capacitive devices from faytech (see table in specification sheet).

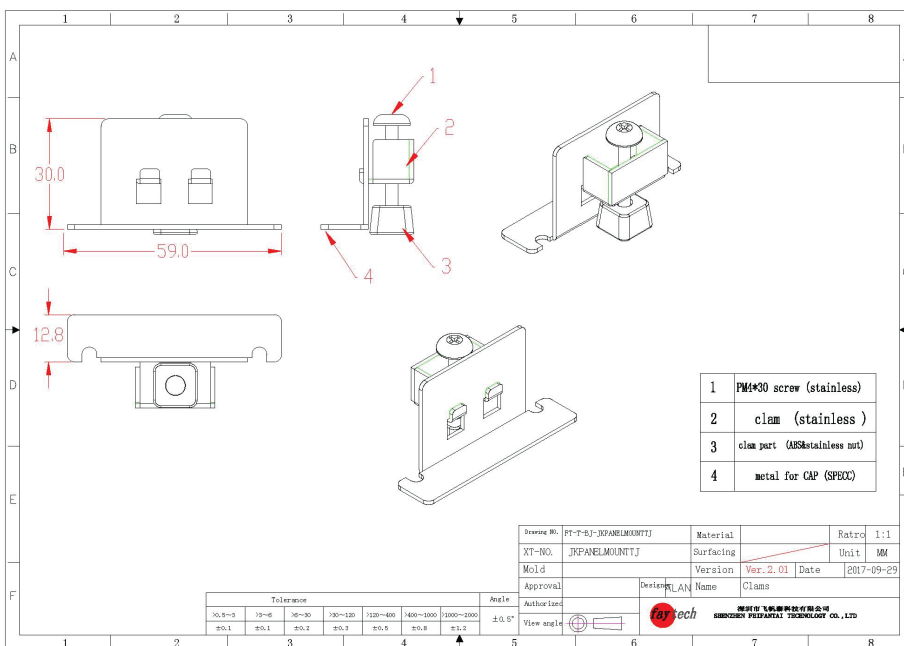
Product name		Clamp Mounts	
Model No.		JKPANELMOUNTTJ02 / 03	
Global Article Code	European Article Code	Model No.	Version
3030500341	1010500552	JKPANELMOUNTTJ02	Excluding metal bracket (only for open frame monitors)
3030502505	1010501980	JKPANELMOUNTTJ03	Including metal bracket (for Touch PCs & monitors)

Range of Application	
Cap 'Intel based' Touch PC	10.1" - 27" *
Cap 'ARM based' Touch PC	10.1" - 27" *
Cap Touch Monitor	10.1" - 27" *
Cap Open Frame Touch Monitor	7 - 55"

* Please check individual products for usability

Operation / Mechanical	
Length of base (mm)	59.00
Width of base (mm)	12.80
Total height (mm)	30.00
Material	PM4*30 screw (stainless)
	Clamp (stainless)
	Clamp part (ABS & stainless nut)
	Metal for CAP (SPECC) ¹⁾

1) Only for JKPANELMOUNTTJ03



Do not use screws longer than 3mm to mount the retaining brackets, because it could damage the device!



Mounting Instructions

Step 1:

Screw the M4 x 30mm pan-head screw into the thread of the retaining clamp.



Step 2:

Now screw the plastic damper to the M4 screw.

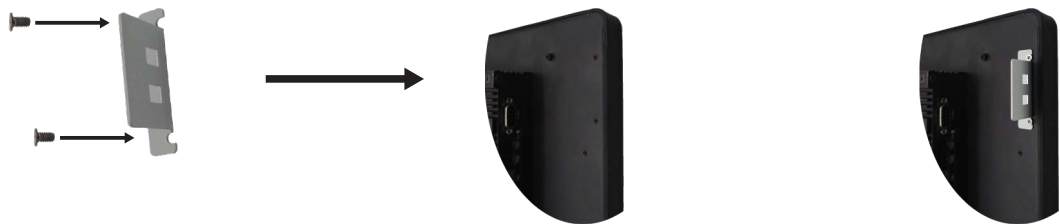


Step 3: (optional) ¹⁾

Mount the retaining bracket with the 2x 3mm M3 screws provided.

Info: Only for standard products without openings.

1) Only for JK PANELMOUNTTJ03



Step 4:

Now insert the device into the cut-out provided for this purpose. Cut-out sizes are listed in the individual datasheets.



Step 5:

Now fasten all holding clamps by screwing on the M4 x 30mm screw.

