

11.6" Touchscreen **USB/HDMI** Monitor
VESA 75 built-in Folio Cover Stand Type



11.6" Touchscreen Display Main Unit (Front View)



Features

- 10-point Capacitive **Multi-touch**
(Non-touchscreen version is also available)
- **Bezel-less** edge to edge tempered glass finish
- **Full HD** 1920*1080 or **HD** 1366*768 available

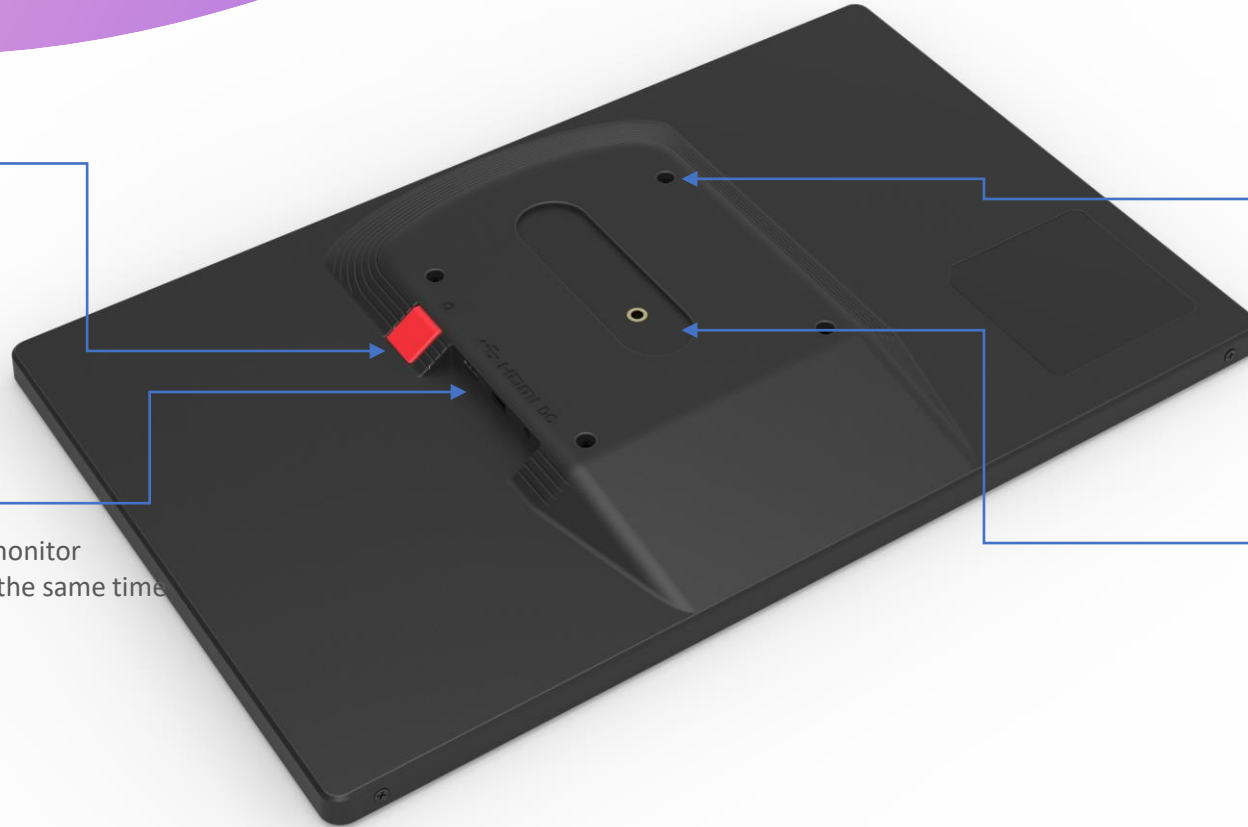
Interfaces & Installation Supports (Rear View)

Power On/Off

Plug and Play device
Power On/Off for monitor power reset

USB type C, or HDMI

CAN only be a USB monitor or a HDMI monitor
CANNOT use USB Graphic and HDMI at the same time



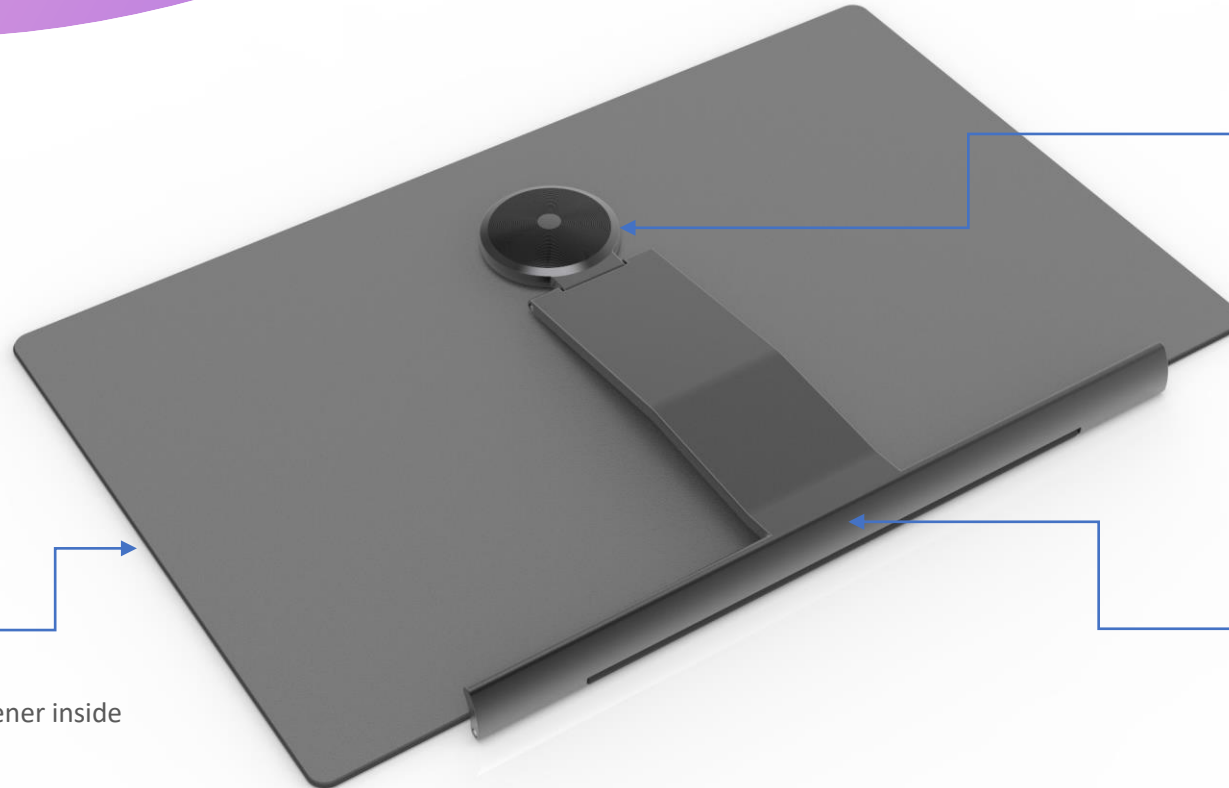
VESA 75x75 Built-in

for Industrial System Mount/Wall-mount

Magnetic Rail

Steel plate built-in
for Magnetic Mounting

Innovative Folio Cover Stand (for Screen Protection & Portable Display Mounting)



Screen Protection Cover

- Synthetic Leather outer liner
- 0.5T Steel Plate and Hard Board Stiffener inside
- Velvet inner liner

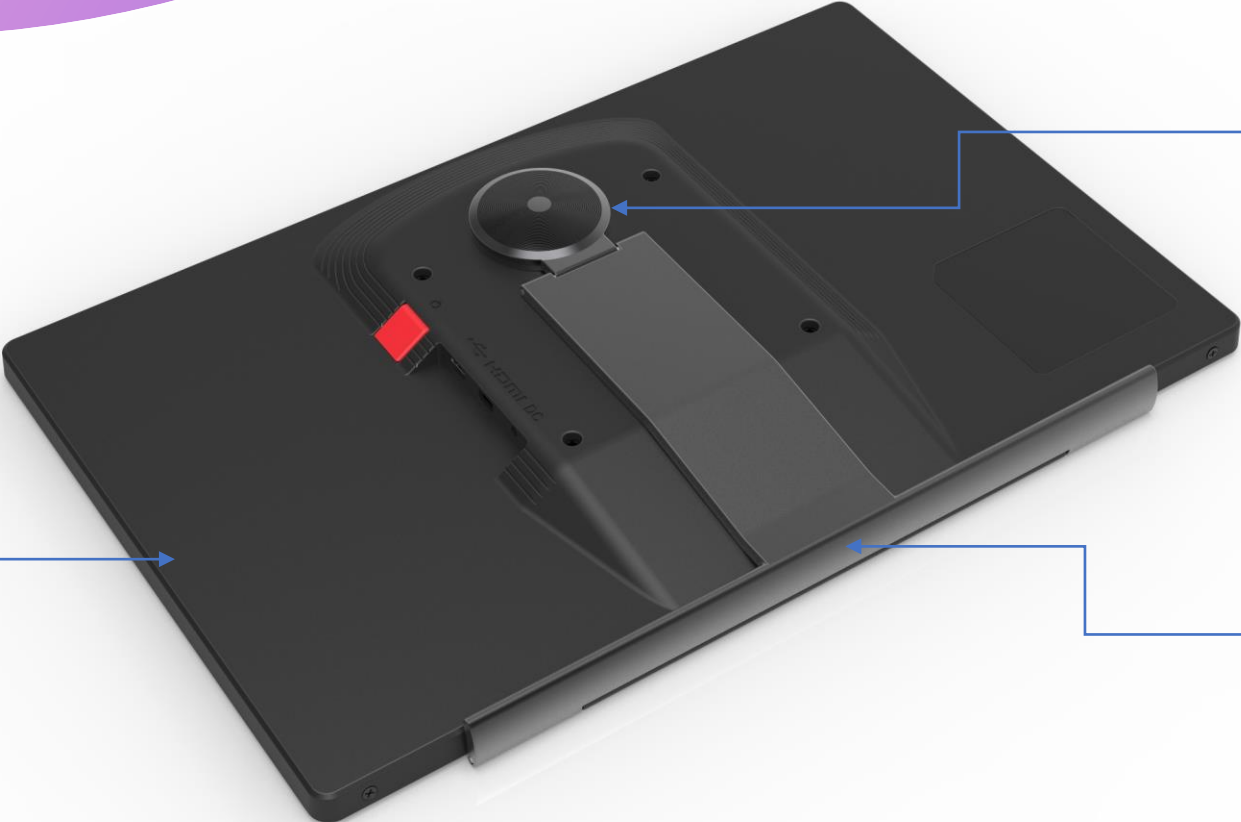
Magnetic Mount Button

20mm*4mm(t) Neodymium Disc Inserted

Monitor Stand

- Pivot Mount Stand
- Screen Protection Cover Hinge

USB/HDMI Monitor On the Go (with Folio Cover Stand)



Magnetic Mount Button
20mm*4mm(t) Neodymium Disc Inserted

Monitor

Folio Cover Stand
Screen Protection Cover Hinge
& Magnetic Pivot Mount Stand

USB/HDMI Monitor On the Go (with Folio Cover Stand)



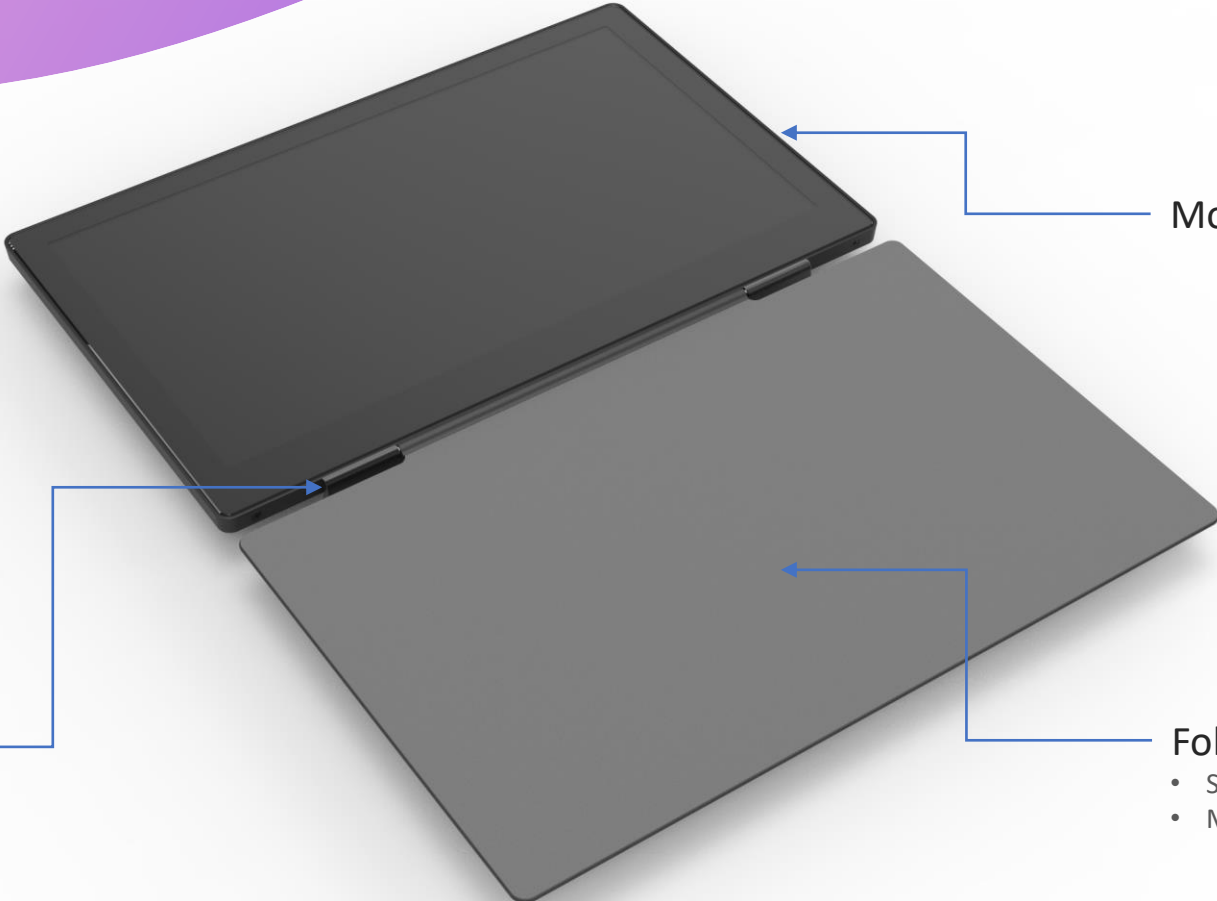
Monitor

Folio Cover (Bottom)

- Screen Protection Cover Outer Liner
- Non-slip Synthetic Leather

Folio Cover Stand

USB/HDMI Monitor On the Go (Folio Cover Open)



Monitor

Folio Cover Stand

Folio Cover Top

- Screen Protection Cover Inner Liner (Velvet)
- Magnetic Free stop (Steel Plate built-in)

USB/HDMI Monitor On the Go (Folio Cover Stand Horizontal Mount)



* Cable Connectors are behind the screen

Detachable Magnetic Mount
20mm*4mm(t) Neodymium Disc Inserted

Non-slip Cover Base

USB/HDMI Monitor On the Go (Folio Cover Stand Horizontal Mount)



Magnetic Free Stop Angle

- Neodymium inserted Monitor Frame
- Adjustable free stop display angle

USB/HDMI Monitor On the Go (Folio Cover Stand Vertical Mount)



Display Pivot Mount

- Horizontal / Vertical Pivot (*Manual Display SW Control)
- Adjustable free stop display angle

USB/HDMI Monitor On the Go (Folio Cover Stand Vertical Mount)



Magnetic Rail Sliding

Align display mount from edge to center (of the Folio Cover Base)

USB/HDMI Monitor On the Go (Horizontal & Vertical Mount View)



USB/HDMI Monitor On the Go (Windows on screen)



Thank you !

