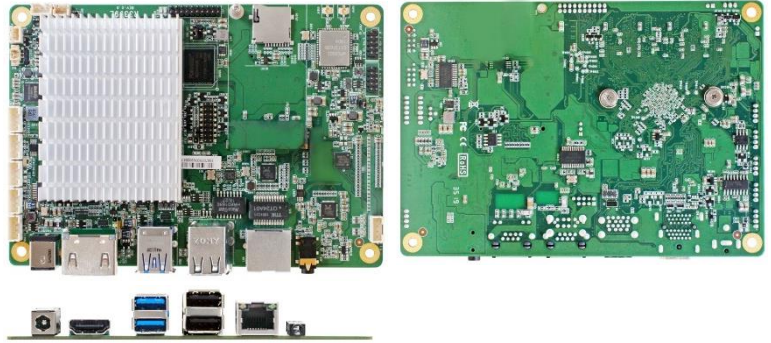


# JR3399XL-2C

Rockchip® ARM Cortex A72+A53 RK3399, 1\* RJ45

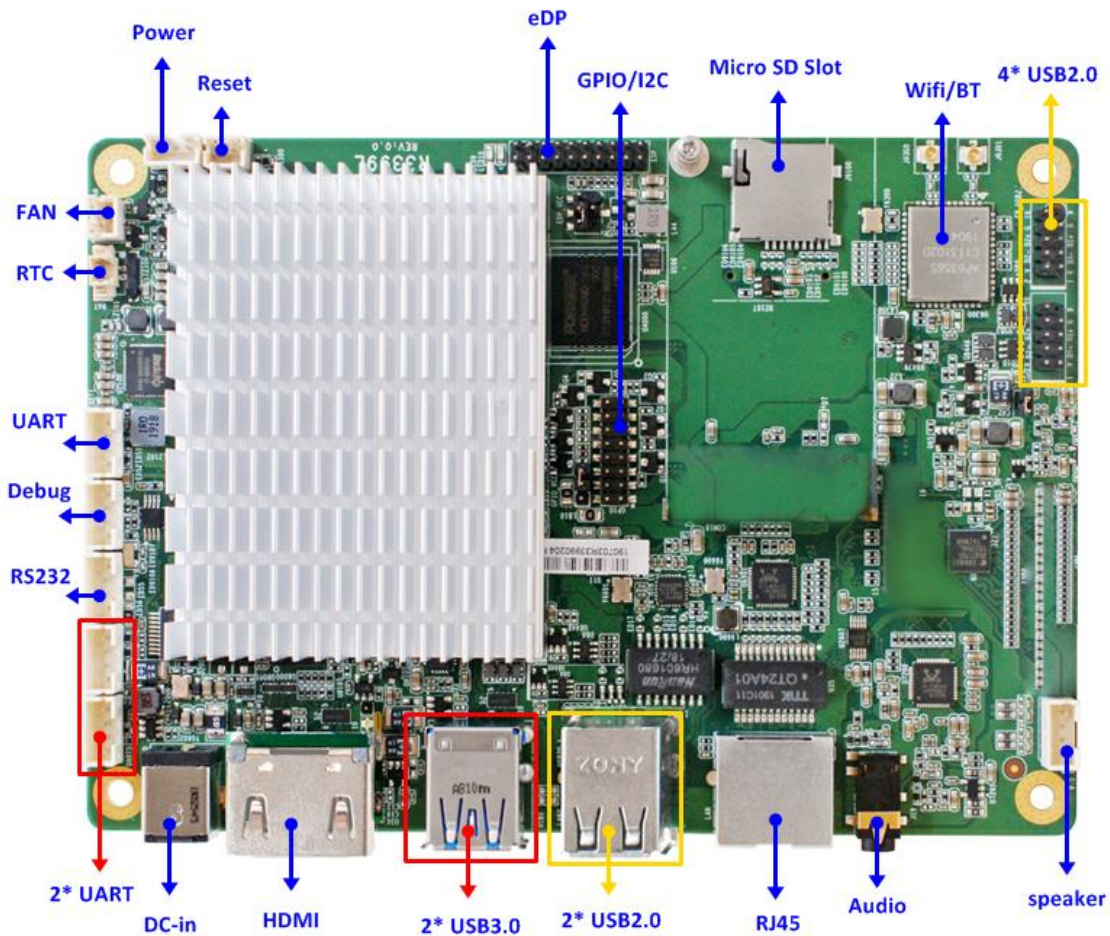
1. Rockchip® ARM Cortex A72 (Dual Core) + Cortex A53 (Quad Core) RK3399 6 core 2.0GHz
2. On board 1333/2GB DDR3L DRAM
3. On board 16G Flash ROM (Max. 64GB)
4. Support WIFI and Blue Tooth
5. 1\* Realtek GbE, 3\* UART, 1\* RS232, 2\* USB3.0, 6\* USB2.0, 1\* OTG (Co-lay USB3.0)
6. 1\* HDMI2.0, 1\* eDP
7. Support 4K H.264/H.265 video decoding, up to 60fp 10bits coding
8. Support 1080P H.264 format video encoding
9. 1\* Micro SD Max 256GB
10. Support Android 7.1, Debian9.0



## Application

Digital Signage/ Automation Equipment

## I/O Diagram



## Specifications

<b>Model</b> JR3399XL-2C	<b>Form Factor</b> 102 * 146mm
<b>Processor System</b> <ul style="list-style-type: none"><li>• Rockchip® ARM Cortex A72 (Dual Core) +Cortex A53 (Quad Core)</li><li>• 2.0GHz</li><li>• Rockchip® RK808-D PMU</li></ul>	<b>Expansion Slot</b> <ul style="list-style-type: none"><li>• 1* Micro SD</li><li>• 1* SIM Card Socket</li></ul>
<b>Memory</b> Onboard DDR3L 1333MHz 2GB	<b>Graphics</b> <ul style="list-style-type: none"><li>• Mali T860MP4 GPU, OpenGL ES1.1/2.0/3.0, OpenCL1.2, DirectX11.1</li><li>• 1* HDMI (Max Resolution: 3840x2160@60Hz)</li><li>• 1* eDP (Max Resolution: 4096x2304@60Hz)</li><li>• Support Dual Displays</li></ul>
<b>Ethernet</b> 1* Realtek RTL8211E GbE 1* AMPAK AP6356S 802.11 a/b/g/n/ac 2.4/5G WIFI and BT-V4.1	<b>Audio</b> 2 channel HD audio: ALC5640
<b>Storage</b> 16GB Flash ROM (Max 64GB)	<b>Rear I/O</b> <ul style="list-style-type: none"><li>• 1* DC Jack (12V)</li><li>• 2* USB3.0 (Co-lay OTG)</li><li>• 2* USB2.0</li><li>• 1* HDMI2.0</li><li>• 1* AUDIO(Line-out +MIC)</li><li>• 1* RJ45</li></ul>
<b>Internal Connector</b> <ul style="list-style-type: none"><li>• 4* USB2.0</li><li>• 3* UART, 1* RS232, 1* Debug</li><li>• 1* eDP</li><li>• 1* Speaker (3W AMP)</li><li>• 1* GPIO (8 bit)</li><li>• 1* I2C</li><li>• 1* Power BT (Header)</li><li>• 1* Reset BT (Header)</li><li>• 1* CPU FAN (Header)</li></ul>	<b>Watchdog Timer</b> <ul style="list-style-type: none"><li>• From Super I/O to drag RESETCON#</li><li>• 256 segments (0~255 sec)</li></ul>
<b>Power</b> 12V DC-in (PWR Con) - AT : Directly PWR on as Power input ready - ATX: Press Button to PWR on after Power input ready	<b>Compliance</b> CE, FCC, LVD, RoHS, REACH
<b>Temperature</b> <ul style="list-style-type: none"><li>• Operating: -10°C ~ 60°C</li><li>• Storage: -20°C ~ 70°C</li></ul>	<b>Warranty</b> 2 Years Limited Warranty

\* Specifications subject to change without notice, not responsible for typographical errors. Does not include HDD or OS.

## Accessories

Parts Number	Description	Parts Number	Description
-----	JR3399XL-2C M/B		