



NUC Fanless Embedded System



Specification:

■ Dimension (W*D*H)	■ 116 * 110 * 65 mm
■ Construction	■ Top cover & I/O plate –aluminum; Base- metal
■ Colors	■ Black / JBC323U591(W)-3160-B
■ MB model	■ JNU591-3160
■ CPU	■ INTEL® BRASWELL N3160 SoC Processor 1.6Ghz
■ BIOS	■ AMI UEFI 64Mb
■ Memory	■ 1 * DDR3L SO-DIMM slot (Max to 8GB)
■ Front I/O Port	■ 2 * USB 3.0 (type A) ■ 1 * COM
■ Rear I/O Port	■ 2 * USB 3.0 (type A) ■ 2 * HDMI (1.4b) ■ 1 * DP (1.1a) ■ 2 * RJ45 Giga LAN ■ Wi-Fi (option) ■ 1 * Line out/Mic Combo ■ 1 * DC-in jack
■ Expansion Slot	■ 1 * half size Mini PCI-E slot ■ 1 * full size Mini PCI-E slot for Mini PCI-E /m-SATA Device ■ 1 * SIM card holder
■ Storage	■ 1 * 2.5 SATA HDD
■ Power Source	■ Adapter : AC_90~240V / DC_12V / 60W
■ Certification	■ EMC : CE , FCC ■ Safety : RoHS , ErP
■ Environment	■ Operating Temperature : 0°C~40°C
■ Mounting Bracket	■ Wall/VESA/DIN Rail combo mounting Kit

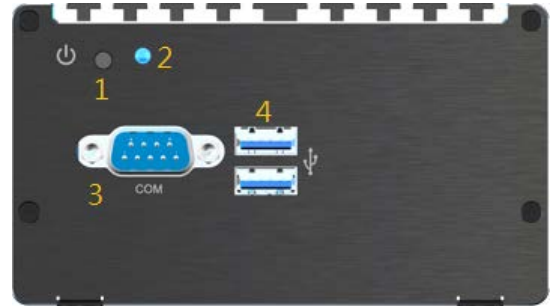
■ Packing

- Net Weight : 1.2KG
- Gross Weight : 1.6KG
- Color Box Dimension : 158(W) x 167(D) x 123.6(H) mm

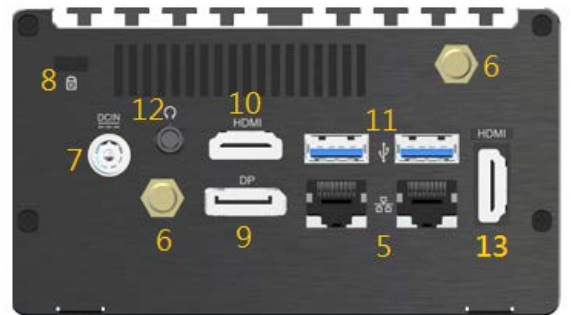
External I/O :

No	Specification
1	Power Switch
2	Power LED (blue Light)
3	COM Port
4	2 * USB 3.0 (type A)
5	Gigabit LAN Ports * 2
6	Wi-Fi Port (option)
7	DC-12V input Port
8	Anti-theft fixing holes
9	Display Port
10 & 13	HDMI Port
11	USB 3.0(type A) Ports *2
12	Audio Port

Front



Rear



Packing List :

Parts Number	Description	Set
-----	JBC323U591(W)-3160-B	1
G03-JC313QIG01-F	313 Series Quick Installation Guide	1
G02-DVD20-A12-WF	INTEL BRASWELL DVD Driver	1
HLMAP-FSP040-F	Adapter 12V/40W/3.3A FSP040-RHAN2	1
-----	Power cord	1
HCS310MWM01B-1F	Wall/VESA/DIN Rail combo mounting Kit	1
LCSCBJC3XX-F	Screw Pack	1
G01-SATA-22P-F	SATA CABLE 22P/CON=90°, L=12cm	1
HCS3XXDINRAILPS-F	Din Rail Clip	1



QIG



Adapter



WALL Mount + VESA



Din Rail Clip



DVD Driver



SATA + POWER CABLE